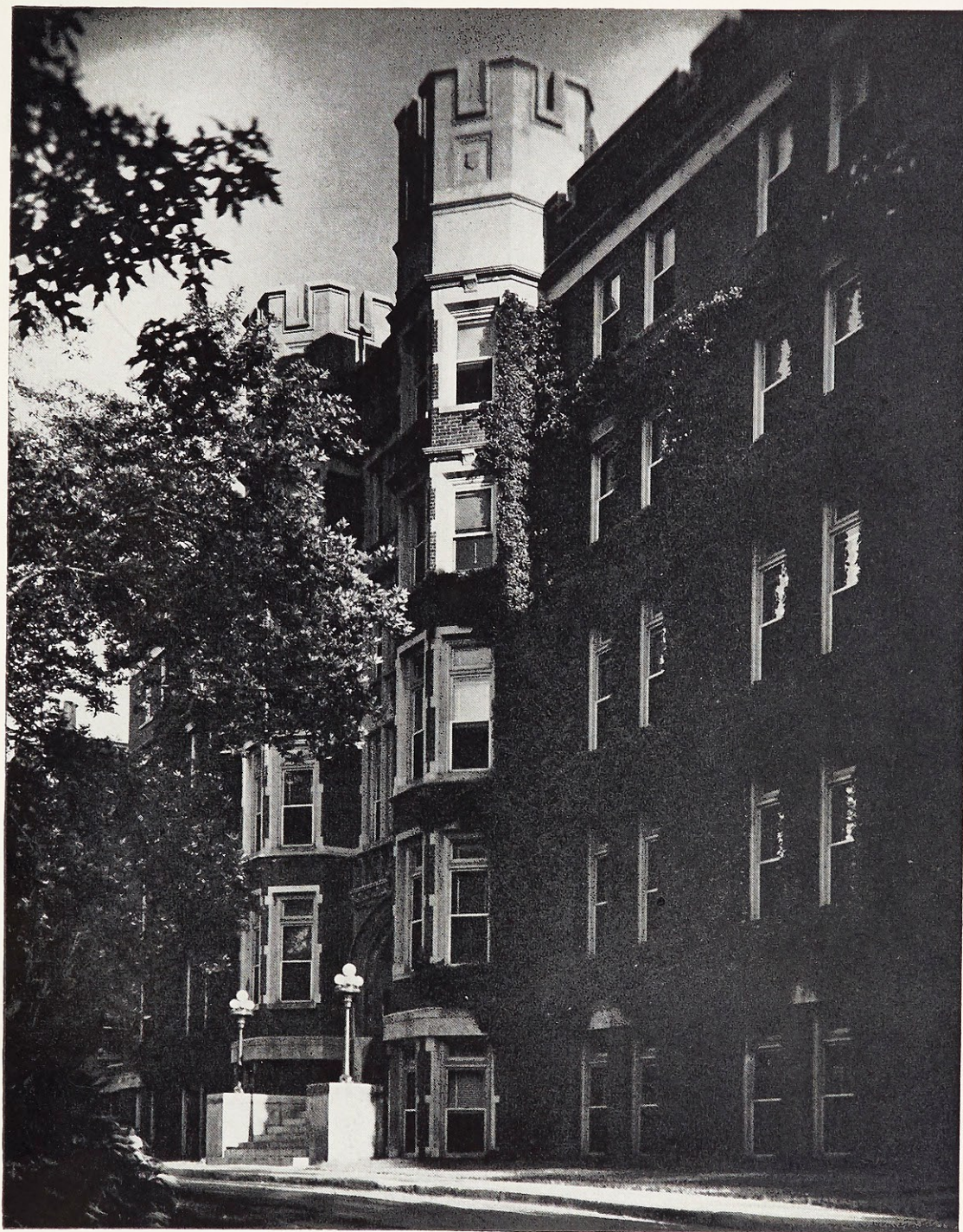




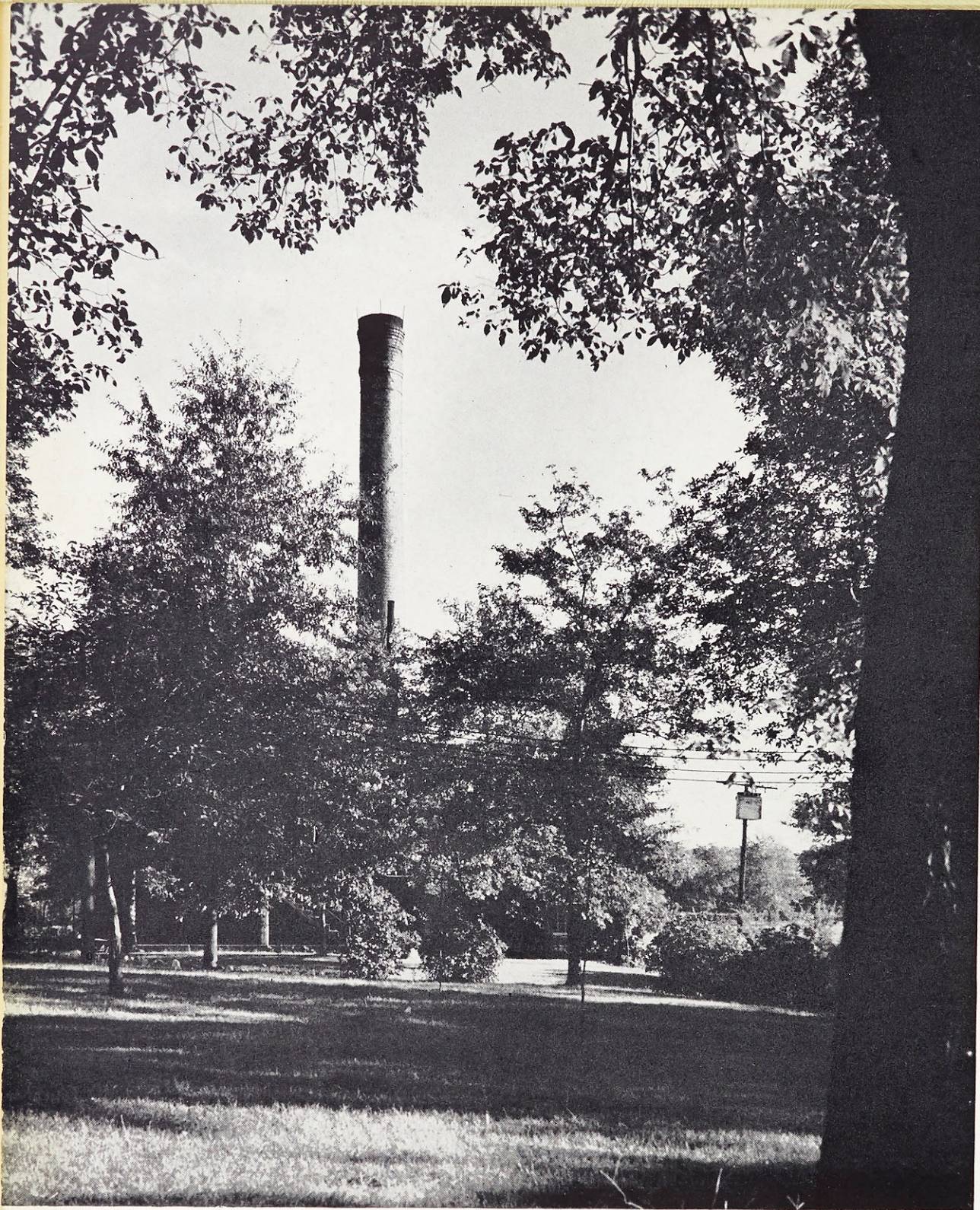
The
Lauretanum

Nineteen-hundred-forty-nine A.D.



The Lauretanum

1949



“Hence the true Christian, product of Christian education, is the supernatural man who thinks, judges and acts constantly and consistently in accordance with right reason illumined by the supernatural light of the example and teaching of Christ; in other words, to use the current term, the true and finished man of character.”

Pius XI

Dedication

The Ideal Webster Girl, product of a Christian education; possessor of truth; spiritually, physically and socially whole; perfect imitation of the Blessed Mother.

To the Ideal Webster Girl, our goal, and to the Blessed Mother, our model, this book is respectfully dedicated by the *Lauretanum* staff of 1949.





Foreword

It is necessary that education today produce men and women possessing that integrity of character marking them as products of a Christian education. In the words of Pope Pius XI:

Christian education takes in the whole aggregate of human life, physical and spiritual, intellectual and moral, individual, domestic and social, not with a view of reducing it in any way, but in order to elevate, regulate and perfect it, in accordance with the example and teaching of Christ.

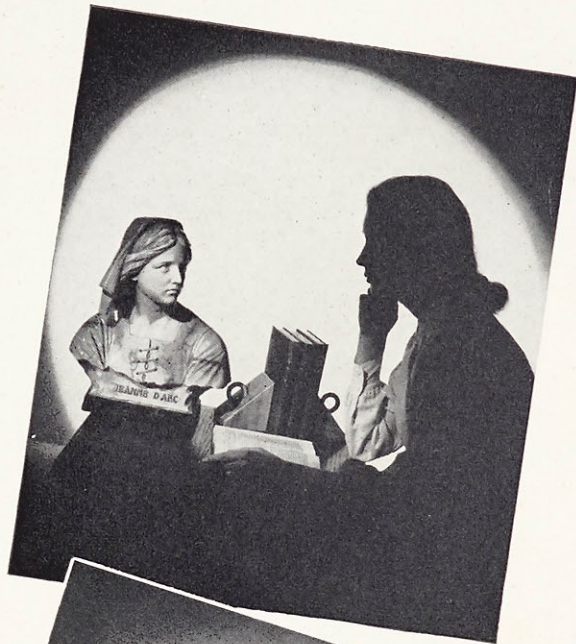
This is the integrity which Webster is striving to give us. It is only by taking advantage of our opportunities here that we may hope to achieve it. We have tried to show how complete participation in all opportunities offered us here will lead us toward our goal—*Integrity*.

Contents

Classes

Activities

Social



Faculty

George Francis Donovan, A.M., Ph.D.
President (On Leave of Absence)

Sister Mariella, S.L., A.M.
Acting President

Sister M. Rose Maureen, S.L., A.M.
Dean of Studies

Sister M. Francis Jane, S.L., A.M.
Dean of Women

Sister Alexander Marie, S.L., A.M.
Registrar

Reverend John W. Baker

Reverend Edwin J. Burmester

Reverend Francis M. Doyle

Reverend George J. Gottwald

Reverend Peter G. Sattler, C.Ss.R.

Reverend Sylvester A. Schiene

Reverend Robert J. Schwegel

Reverend Elmer Toups, C.Ss.R.

Sister Mary Carmela, S.L., B.S.

Sister Mary Louise, S.L., A.M., Ph.D.

Sister Helen Therese, S.L., A.M.

Sister Mary Paula, S.L., B.M.

Sister Mary Harriet, S.L., M.S.

Sister Mary Felicia, S.L., A.M., Ph.D.

Sister Mary Edmond, S.L., A.M., Ph.D.

Sister Helen Clare, S.L., M.S.

Sister Mary Germaine, S.L., M.S.

Sister Mary Adeline, S.L., M.M.

Sister Mary Frederic, S.L., A.M.

Sister Mary Roberta, S.L., A.M., Ph.D.

Sister Mary Alphonsine, S.L., B.M.

Sister Mary Joecile, S.L., M.M.

Sister Mary Bede, S.L., M.M.

Sister Catherine Patrice, S.L., M.M.

Sister Mary Gregory, S.L., A.M.

Sister Edwin Mary, S.L., A.M.

Sister Francis de Sales, S.L., A.M., Ph.D.

Sister Mary Dolorine, S.L., A.M., Ph.D.

Sister Francis Louise, S.L., B.S.

Sister M. Helen Jean, S.L., A.B.

Sister Mary Aubert, S.L., A.M.

Sister Mary Clotaire, S.L., B.S. of L.S.

Sister Rose Vincent, S.L., B.S. in M., C.Ch.C.

Hermina Aguero, B.S., Dr. in Ed.

Dorothy I. Andrews, A.M.

Catherine Barnicle, A.B.

Esther McDonald Brown, A.M.

Canascia Burke, A.M.

Monique Corriveau, A.B.

Doris Diephouse, A.B.

Eloise Barclay Du Bois, A.M.

Elizabeth Louise Etnire, A.M., Litt.D.

Frederick Gormley, M.S.

Jeannette Julia Gund, B.S.

Alice Harper, A.B.

Ann Mary Heiss, M.S.

Loretta Jeanne Higgins, A.B.

Muriel Irene Hoogstraet, A.B.

Lisbeth Ebers Hoops

Mabel M. Howell, B. of Ed.

Anne H. Jennings, A.M.

Nora Jorgensen, A.M.

Harry Richard McClain, LL.B.

Frances McCurdy, B.S.

Carl J. Madlinger

Thomas J. Magner, A.M.

Michael F. Manley, LL.B., A.M.

Nelka C. Mooney

Helen M. Pech, Ph.B., B.M.

Anna McClain Sankey, A.B.

George Schaefer, B.L.M., C.Ch.C.

Margaret L. Speer, M.F.A.

Mary Kay Stamper, A.M.

Consuelo Uribe Wise, A.B.



It is necessary that all the teaching and the whole organization of the school, and its teachers, syllabus and text-books in every branch, be regulated by the Christian spirit, under the direction and maternal supervision of the Church; so that Religion may be in very truth the foundation and crown of the youth's entire training; and this in every grade of school, not only the elementary, but the intermediate and the higher institutions of learning as well."

Pius XI

Classes

This is the workshop of our education. The raw materials, foreign and domestic, being molded gradually, slowly, carefully, into their final shapes. Freshmen, eager for knowledge, attempting to grasp anything and everything. Sophomores, learning the art of choosing, of distinguishing between good and better. Juniors, increasing in wisdom, ready to be cast in the final mold. Seniors, the finished products, carrying the principles of their Christian education to the world.

Here are the intellectual and the moral—important ingredients in the production of the Ideal Webster Girl.





Seniors

Rose Marie Saner

Jacksonville, Illinois

A.B. in Speech

- | | |
|----------------------------------|-----------------------------------|
| Sodality 1, 2, 3, 4 | <i>Who's Who</i> 3 |
| Board 4 | International Relations Club |
| Student Government Board 2, 3, 4 | 2, 3, 4 |
| Class President 2, 3 | Loretto Players 1, 2, 3 |
| President 4 | Rules and Regulations Committee 2 |
| Athletic Association 1, 2, 3, 4 | French Club 1, 2 |
| <i>Loretine</i> Staff 3 | Speech Award 1, 3 |
| <i>Web</i> Staff 1, 2, 3 | Spanish Award 1 |
| Nominating Committee 1 | Class Treasurer 1 |

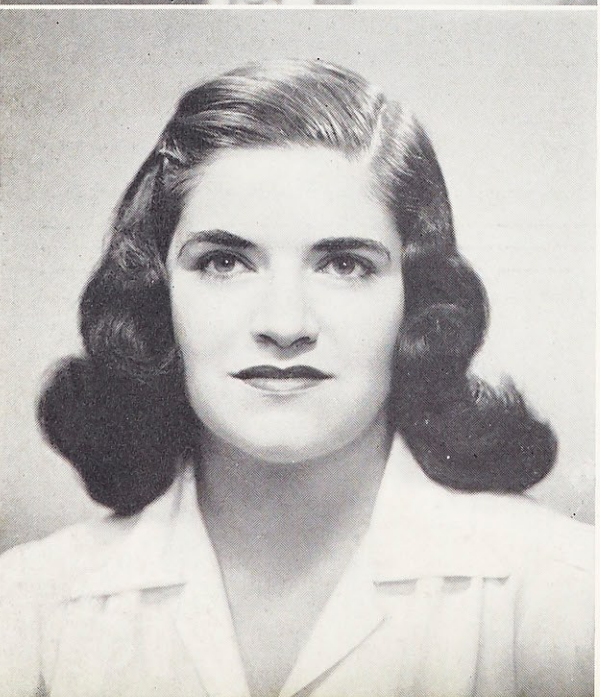


Rosemary Schmuck

St. Louis, Missouri

A.B. in Speech

- | | |
|---------------------------------|-------------------------------|
| Sodality 1, 2, 3, 4 | Co-Chairman, Sophomore |
| Vice-Prefect 3 | Faculty Party 2 |
| Prefect 4 | Musicales Properties Chairman |
| Student Government Board 4 | 3 |
| Athletic Association 1, 2, 3, 4 | Choral Club 3, 4 |
| Dramatics Club 1, 2 | |



Mary Joan Mazzoni

Louisville, Kentucky

A.B. in Sociology

- | | |
|---------------------------------|--------------------------------|
| Sodality 1, 2, 3, 4 | <i>Who's Who</i> 4 |
| Board 2, 3, 4 | Sociology Club 1 |
| Student Government Board 4 | Spanish Club 1, 2 |
| Hall President 4 | Dramatics Club 1, 2 |
| Athletic Association 1, 2, 3, 4 | Musicales Committee Chairman 3 |
| <i>Lauretanum</i> Editor 3 | Freshman Advisory Committee 2 |
| <i>Loretine</i> Staff 4 | |
| May Queen 3 | |
| Athletic Banquet Chairman 3 | |

Joan, R. M., Rosemary



Seniors

Mary Frances King

St. Louis, Missouri

A.B. in Spanish

Sodality 1, 2, 3, 4
 Athletic Association 1, 2, 3, 4
 Loretine Staff 3, 4
 Web Editor 4
 Classical Club 1, 2
 Language Club 4
 Chairman, Spanish Division
 Eta Sigma Phi 4

National Secretary
 Chairman, Student Committee
 on Assemblies 3
 Resolutions Committee, Fac-
 ulty-Student Institute 4
 Faculty-Student Joint Institu-
 tional Committee 4



Josephine Ceresia

St. Louis, Missouri

A.B. in Sociology

Sodality 1, 2, 3, 4
 Athletic Association 1, 2, 3, 4
 Spanish Club 1, 2
 Sociology Club 1

Musicale 4
 Co-Chairman, Ping-Pong
 Tournament 3



Jacqueline Brookshire

St. Louis, Missouri

A.B. in Sociology

Sodality 1, 2, 3, 4
 Athletic Association 1, 2, 3, 4
 Spanish Club 1, 2
 Sociology Club 4

Musicale 4
 Christmas Banquet Serving
 Committee Chairman 3



Mary Fran, Jackie, Jo





Seniors

Catherine Eleanor Jostedt

St. Louis, Missouri

A.B. in Sociology

- | | |
|---------------------------------|---------------------------|
| Sodality 1, 2, 3, 4 | <i>Lauretanum</i> Staff 3 |
| Treasurer 3 | <i>Loretine</i> Staff 3 |
| Student Government Board 4 | Ivy Room Committee 3 |
| Athletic Association 1, 2, 3, 4 | Musicale 1, 2, 3, 4 |
| Treasurer 3 | Publicity Chairman 4 |
| President 4 | Classical Club 2 |
| <i>Web</i> Staff 1, 2, 3 | Christmas Pageant 3 |

Patricia Ann Waller

Mattoon, Illinois

A.B. in Sociology

- | | |
|---------------------------------|----------------------------------|
| Sodality 1, 2, 3, 4 | International Relations Club 4 |
| Mission Club Treasurer 2 | Musicale Song Director 4 |
| Nominating Committee 3 | Illinois Section Club |
| Athletic Association 1, 2, 3, 4 | President 3 |
| Chairman, Ivy Room Committee 4 | Class Volleyball Team 1, 2, 3, 4 |
| Choral Club 1, 2 | Class Basketball Team 1, 2, 3, 4 |
| Loretto Players 2, 3, 4 | |
| C. S. M. C. Study Club 4 | |



Margaret Ann Porbeck

Little Rock, Arkansas

A.B. in Sociology

- | | |
|---------------------------------|----------------------------------|
| Sodality 1, 2, 3, 4 | C. S. M. C. Study Club 4 |
| Athletic Association 1, 2, 3, 4 | Musicale 2, 3, 4 |
| Treasurer 2 | Southern Section Club |
| Varsity 1, 2, 3, 4 | Vice-President 4 |
| Captain 4 | Class Volleyball Team 1, 2, 3, 4 |
| Spanish Club 1 | Class Basketball Team 1, 2, 3, 4 |
| International Relations Club 4 | |
| Editor of <i>Etcetera</i> 4 | |



Pat, Pete, Bonny



Seniors

Margaret Ann Fillo

Webster Groves, Missouri

A.B. in French

Sodality 1, 2, 3, 4	French Club 1, 2, 3, 4
Athletic Association 1, 2, 3, 4	French Scholarship 2
Senior Class Vice-President 4	Classical Club 3
Varsity Basketball 1, 2	Musical 2, 3

Ann Michenfelder

St. Louis, Missouri

A.B. in Speech

Sodality 1, 2, 3, 4	Loretto Players 1, 2, 4
Student Government Board 4	Vice-President 4
Senior Class President	Shakespearean Production 1, 2, 3, 4
Athletic Association 1, 2, 3, 4	Musical 1, 2, 3
Nominating Committee 3	Stage Manager 3
May Day Committee 1, 2, 3	

Elizabeth Louise Taylor

Chicago, Illinois

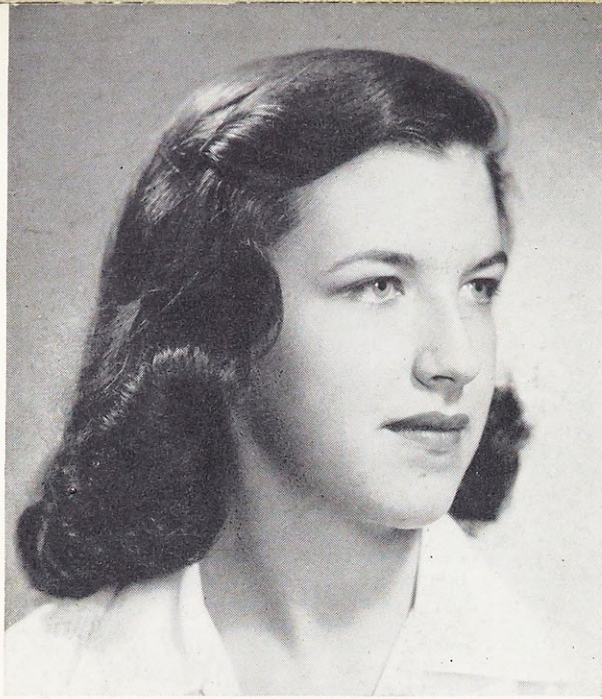
A.B. in Dramatics and Art

Sodality 1, 2, 3, 4	Shakespearean Productions 1, 2, 3, 4
Sodality Board 3	Musical
Student Government Board 3	Assistant Chairman 3
Athletic Association 1, 2, 3, 4	Scenery Chairman 4
Cheerleader 2, 3, 4	Poetry Club 3, 4
Web Staff 1, 2, 3, 4	Vice-President 4
Loretto Staff 2, 3	Christmas Pageant Director 4
Who's Who 3	French Club 1, 2
Loretto Players 1, 2, 3, 4	Rules and Regulations Committee 3
President 4	
Class Secretary 1, 2	



Betty Lou, Ann, Marg





Seniors

Rosemary Patricia Andrew

St. Louis, Missouri

A.B. in Spanish

- | | |
|---------------------------------|-----------------------------|
| Sodality 1, 2, 3, 4 | Musicale 1, 2, 3, 4 |
| Athletic Association 1, 2, 3, 4 | Ivy Room Committee 4 |
| Spanish Club 1, 2, 3 | Student Directory 3 |
| President 3 | Class Basketball Team 1, 2, |
| French Club 1, 2, 3 | 3, 4 |
| Secretary-Treasurer 3 | Class Volleyball Team 1, 2, |
| Language Club 4 | 3, 4 |



Mary Elizabeth Thornhill

St. Louis, Missouri

B.S. in Dietetics

- | | |
|---------------------------|------------------------|
| Sodality 1, 2, 3, 4 | Dietetics Club 2, 3, 4 |
| Web Staff 4 | President 4 |
| Freshman Advisory Board 4 | Musicale 2, 3, 4 |



Joan Krebs

St. Louis, Missouri

A.B. in French

- | | |
|------------------------------|-----------------------------|
| Sodality 1, 2, 3, 4 | Classical Club 1, 2, 3 |
| Athletic Association 1, 2, 3 | Secretary of St. Louis Uni- |
| Loretine Artist 1 | versity's Classical Club 4 |
| Web Artist 4 | Language Club 4 |
| Eta Sigma Phi 1, 2, 3, 4 | President |
| French Scholarship 1 | French Club 1, 2, 3 |

Pat, Joan, Thorn



Seniors

Margaret Unser

Morrisonville, Illinois

A.B. in Speech

- | | |
|---------------------------------|-----------------------------------|
| Sodality 1, 2, 3, 4 | Shakespearean Productions 1, 2, 3 |
| Fall Festival Booth Chairman 4 | Musicals 2, 3, 4 |
| Athletic Association 1, 2, 3, 4 | Varsity 3 |
| Nominating Committee 1 | Class Volleyball Team 1, 2, 3, 4 |
| Class Treasurer 4 | Class Basketball Team, 1, 2, 3, 4 |
| Dramatics Club 1, 2, 3, 4 | |
| French Club 1 | |
| Language Club 4 | |

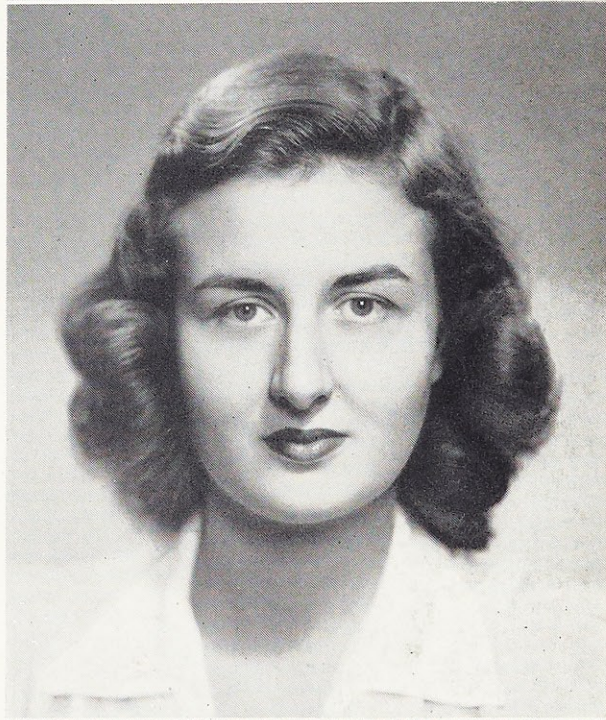


Josephine Marian Serafini

Highwood, Illinois

A.B. in English

- | | |
|---|--------------------------------|
| Sodality 1, 2, 3, 4 | Shakespearean Productions 2, 3 |
| Sodality Union Representative 4 | Poetry Club 1, 2, 3, 4 |
| Student Government Nominating Committee 3 | Vice-President 3 |
| Athletic Association 1, 2, 3, 4 | President 4 |
| Loretine Staff 4 | Spanish Club 1 |
| Lauretanum Staff 3 | Spanish Award 1 |
| Choral Club | Class Volleyball Captain 3 |

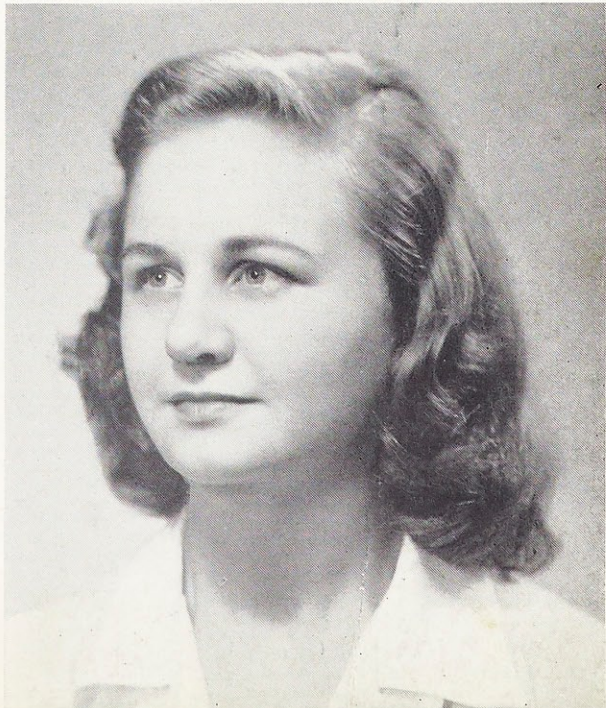


Elvera Parr

Wentzville, Missouri

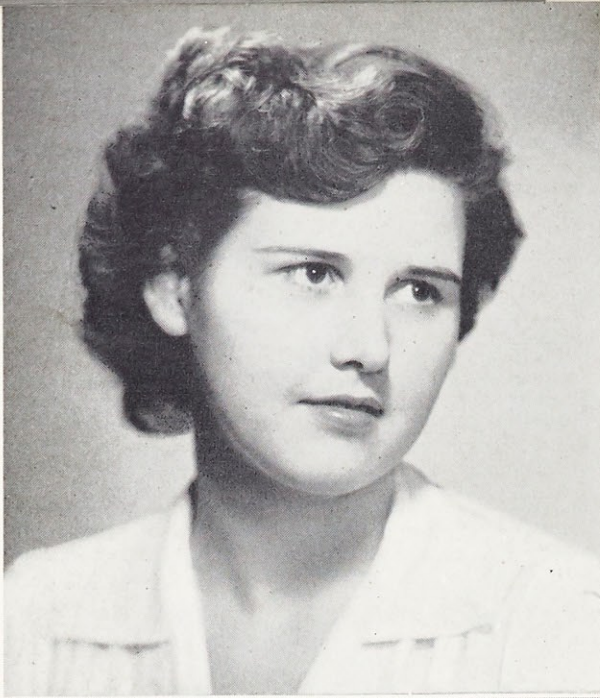
A.B. in English

- | | |
|---------------------------------|---------------|
| Sodality 1, 2, 3, 4 | French Club 3 |
| Athletic Association 1, 2, 3, 4 | |



Elvera, Marty, Jo





Seniors

Shirley Meyer

St. Louis, Missouri

A.B. in Art

Sodality 1, 2, 3, 4
 Athletic Association 1, 2, 3, 4
 Loretine Staff 4
 Chairman of May Day 3

Classical Club 1
 Loretto Players 4
 Class Volleyball Team 1



Rosemarie Hughes

St. Louis, Missouri

A.B. in English

Sodality 1, 2, 3, 4
 Athletic Association 1, 2, 3, 4
 Language Club 4
 Loretto Players 4

Spanish Club 1, 2, 3
 Classical Club 2
 Musicale 3



Doris Freeman

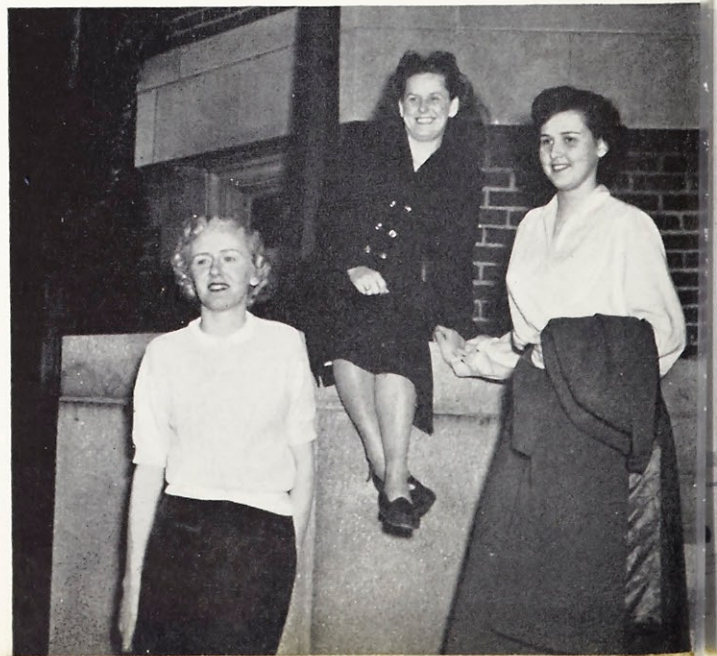
St. Louis, Missouri

A.B. in English

Athletic Association 1, 2, 3, 4

Bowling Club 2, 3

Rosemarie, Doris, Shirley



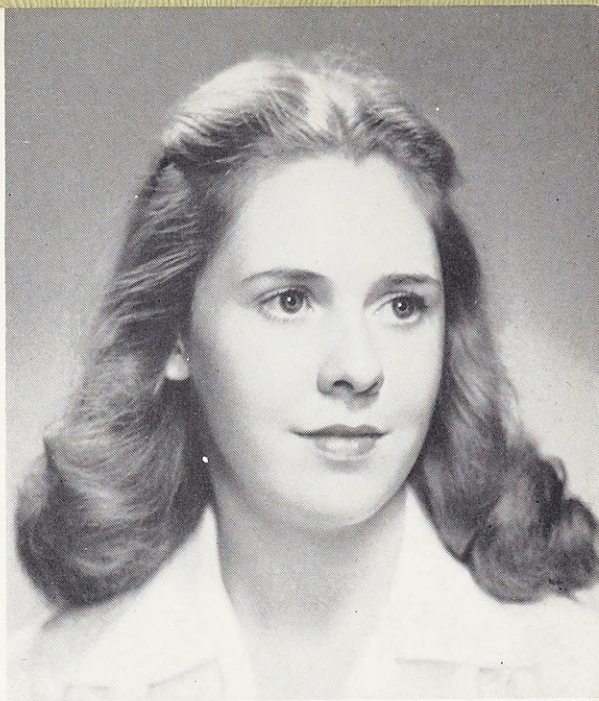
Seniors

Mary Catherine Mahon

St. Louis, Missouri

B.S. in Dietetics

- | | |
|---------------------------------|---------------------------|
| Sodality 1, 2, 3, 4 | Dietetics Club 1, 2, 3, 4 |
| Mission Committee 1, 2 | French Club 1, 2 |
| Apostolic Committee 3 | Spanish Club 1 |
| Athletic Association 1, 2, 3, 4 | Musicale 3, 4 |



Lucille Honderup

St. Louis, Missouri

B.S. in Dietetics

- | | |
|---------------------------------|---------------------------|
| Sodality 1, 2, 3, 4 | Dietetics Club 1, 2, 3, 4 |
| Mission Committee 1, 2 | Choral Club 1, 2, 3 |
| Apostolic Committee 3 | Musicale 1, 3, 4 |
| Athletic Association 1, 2, 3, 4 | |



Eileen Dunn

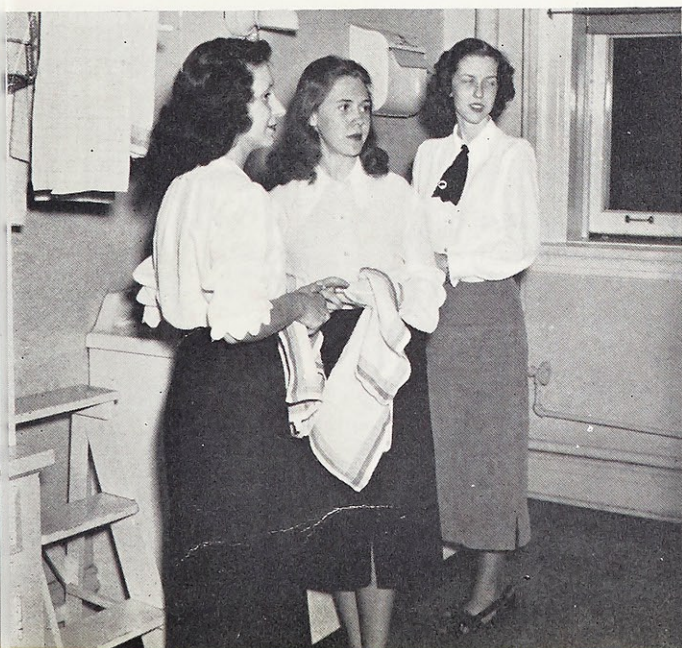
St. Louis, Missouri

B.S. in Dietetics

- | | |
|---------------------------------|---------------------------|
| Sodality 1, 2, 3, 4 | Dietetics Club 1, 2, 3, 4 |
| Mission Committee 1, 2 | Program Chairman 4 |
| Apostolic Committee 3 | Choral Club 1, 2, 3 |
| Athletic Association 1, 2, 3, 4 | Musicale 1, 3, 4 |



Lucille, Mary Catherine, Eileen





Seniors

Katherine Whyte Daly

Clayton, Missouri

B.S. in Dietetics

- | | |
|---------------------------------|--------------------------------|
| Sodality 1, 2, 3, 4 | Junior Class Secretary |
| Chairman, Apostolic Committee 3 | Freshman Class Vice-President |
| Student Government Board, 4 | Chairman of Spring Dance 3 |
| Secretary | Chairman of Educational Tour 3 |
| Athletic Association 1, 2, 3, 4 | Dietetics Club 1, 2, 3, 4 |
| Varsity Basketball 1, 2 | |

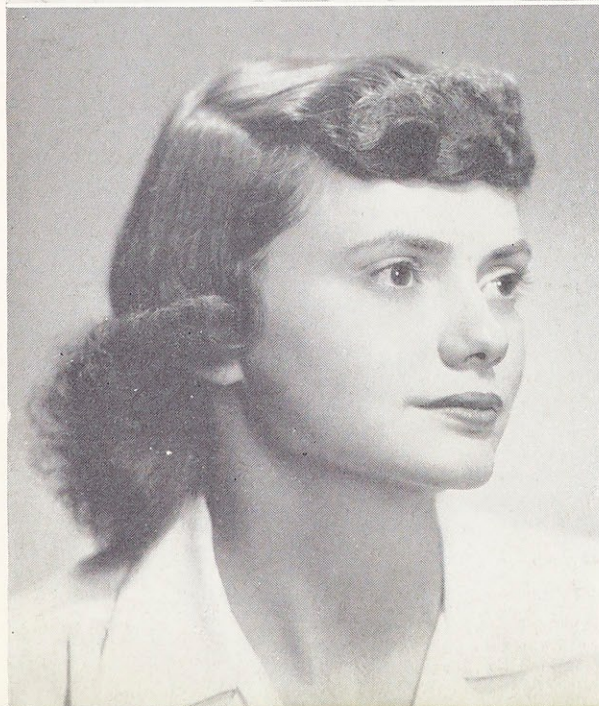


Verna Votruba

St. Louis, Missouri

A.B. in Sociology

- | | |
|---------------------------------|-------------------------------|
| Sodality 1, 2, 3, 4 | Co-Chairman of Senior Dance 3 |
| Athletic Association 1, 2, 3, 4 | Spring Formal Committee 3 |
| Musicale 3 | Sociology Club 1 |
| Tennis Champion 3 | |



Carole Rogles

St. Louis, Missouri

A.B. in Sociology

- | | |
|---------------------------------|----------------------------|
| Sodality 1, 2, 3, 4 | Chairman of Senior Dance 3 |
| Eucharistic Committee 4 | Loretine Staff 4 |
| Athletic Association 1, 2, 3, 4 | Musicale 1, 2, 3 |
| Junior Prom Maid 3 | University News Reporter 4 |
| Courtesy Committee 3, 4 | |

Verna, Carole, Kate



Seniors

Anita Kopf

St. Louis, Missouri

A.B. in Commercial Art

- | | |
|---------------------------------|------------------------------|
| Sodality 1, 2, 3, 4 | Musicale 1, 2, 3, 4 |
| Athletic Association 1, 2, 3, 4 | Spanish Club 2 |
| Class Secretary 4 | Choral Club 1 |
| Loretine Staff 4 | Class Volleyball Team 1, 2, |
| McCaughen and Burr Art | 3, 4 |
| Award 3 | South Side Section Club 1, 2 |
| Loretto Players 4 | |



Mary Ann Kroner

Maplewood, Missouri

B.S. in Dietetics

- | | |
|---------------------------------|-------------------------------|
| Sodality 1, 2, 3, 4 | Classical Club 3 |
| Athletic Association 1, 2, 3, 4 | Loretto Players 1, 2, 3, 4 |
| Spanish Club 2 | Class Volleyball Team 1, 2, 3 |
| Dietetics Club 2, 3, 4 | |



Helen Marie Jablonski

St. Louis, Missouri

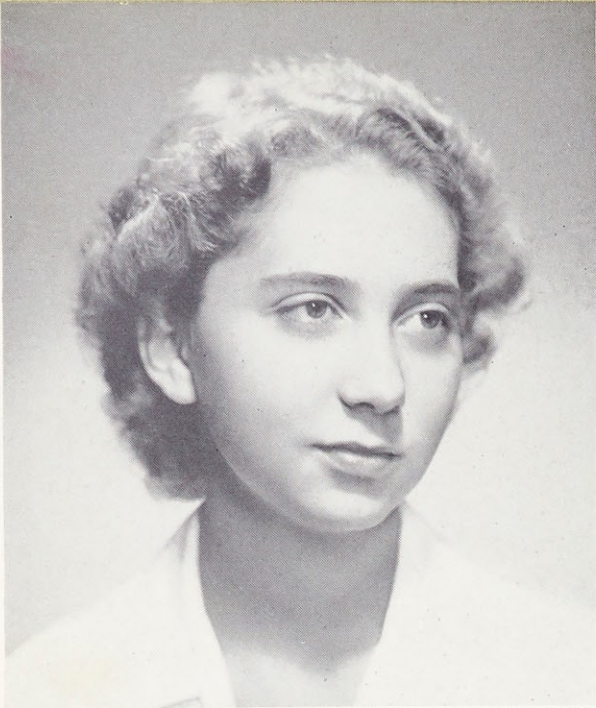
B.S. in Mathematics

- | | |
|---------------------------------|------------------------------|
| Sodality 1, 2, 3, 4 | Classical Club 3 |
| Athletic Association 1, 2, 3, 4 | Loretto Players 4 |
| Spanish Club 1, 2 | North Side Section Club 1, 2 |
| Mathematics Club 2, 3 | |



Helen, Mary Ann, Anita





Seniors

Doris Mae Schnur

St. Louis, Missouri

B.S. in Music

- | | |
|---------------------------------|---|
| Sodality 1, 2, 3, 4 | Music Guild 4 |
| Sodality Board 3, 4 | Ping Pong Championship 4 |
| College Sodality Union 4 | Poetry Club 4 |
| Athletic Association 1, 2, 3, 4 | C.S.M.C. Study Club 4 |
| Loretine Staff 4 | Soloist with St. Louis Women's Symphony 1, 2, 3 |
| Choral Club 3, 4 | |

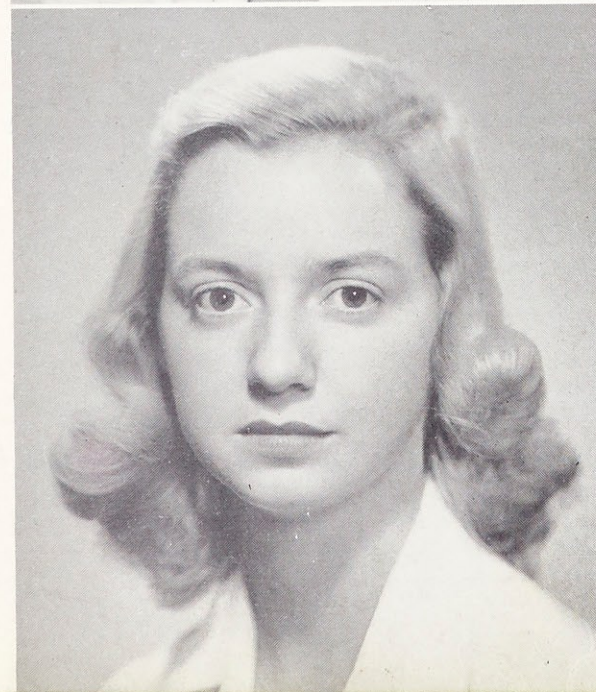


Virginia Lee Mitchell

St. Louis, Missouri

A.B. in English

- | | |
|---------------------------------|----------------------------|
| Sodality 1, 2, 3, 4 | May Maid 3 |
| Athletic Association 1, 2, 3, 4 | Musical 2, 3, 4 |
| Loretine Staff, 4 | Class Volleyball Team 2, 3 |



Phyllis Reilly

Kirkwood, Missouri

A.B. in Sociology

- | | |
|--|----------------------------------|
| Sodality 1, 2, 3, 4 | Section Club 2, 3, 4 |
| Athletic Association 1, 2, 3, 4 | Class Volleyball Team 1, 2, 3, 4 |
| Sociology Club, St. Louis University 4 | Captain 2 |
| Nominating Committee 4 | Class Basketball Team 1, 2, 3, 4 |
| Musical 2, 3, 4 | |
| Fall Formal Bid Committee 4 | |

Ginny, Doris, Phyllis



Seniors

Margaret Joann Carroll

St. Louis, Missouri

A.B. in Sociology

- | | |
|-----------------------------------|--|
| Sodality 1, 2, 3, 4 | Spanish Club 1, 2 |
| Athletic Association 1, 2, 3, 4 | Sociology Club, St. Louis University 4 |
| Chairman of Fall Formal 4 | Musical 1, 2, 3, 4 |
| Rules and Regulations Committee 3 | Class Volleyball Team 1, 2, 3, 4 |
| Varsity 4 | Class Basketball Team 1, 2, 3, 4 |
| Loretto Players 4 | |
| Dramatics Club 1 | |

Mary Jane Payne

Jennings, Missouri

A.B. in English

- | | |
|---------------------------------|------------------------------------|
| Sodality 1, 2, 3, 4 | North-Side Section Club 1, 2, 3, 4 |
| Fall Festival Booth Chairman 3 | President 3, 4 |
| Student Government Board 1 | Class Volleyball Team 1, 2, 3, 4 |
| Athletic Association 1, 2, 3, 4 | Class Basketball Team 1, 2, 3, 4 |
| Cheerleader 1, 2, 3, 4 | Musical 1, 2, 3, 4 |
| Loretto Staff 3, 4 | Publicity Chairman 4 |
| Editor 4 | |
| Lauretanum Staff 3 | |
| Web Staff 1, 2, 3, 4 | |

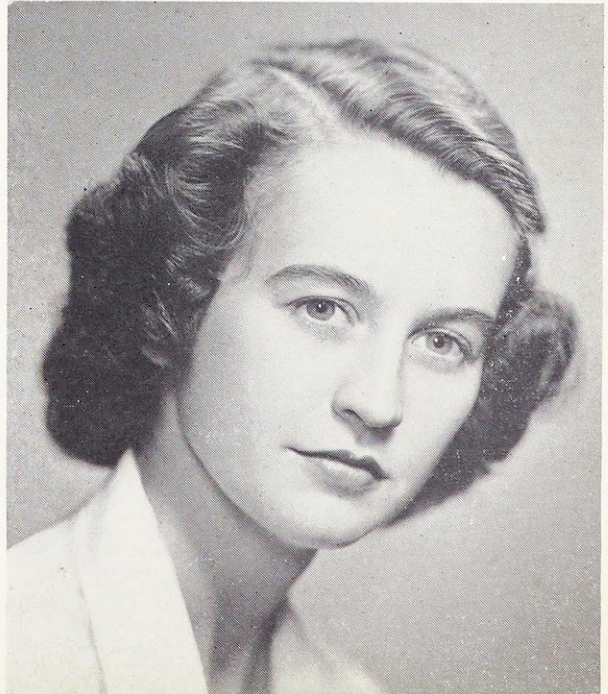
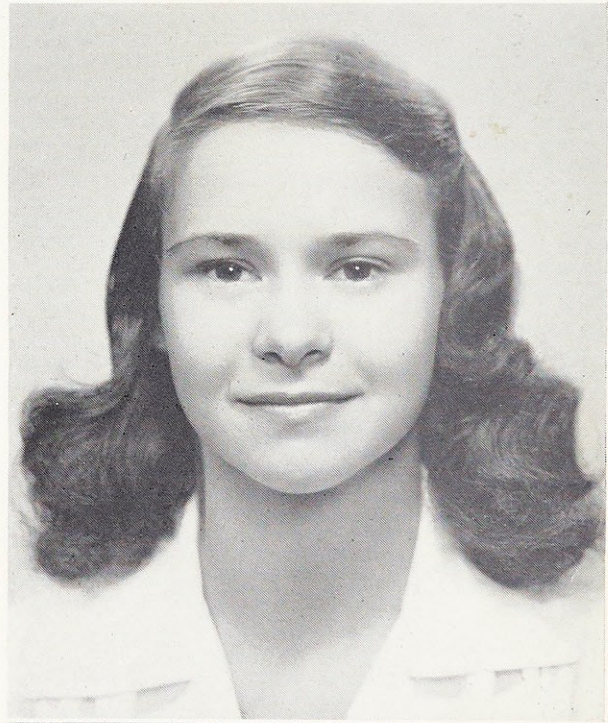
Margaret Mary Mason

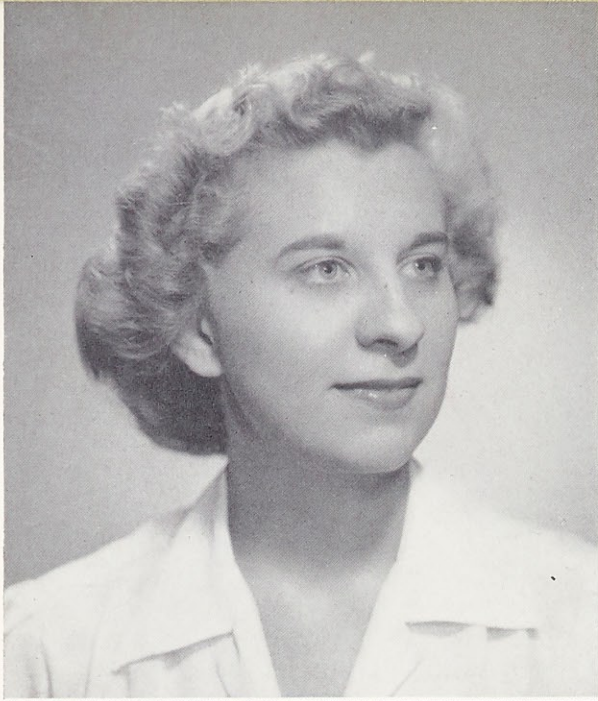
Kirkwood, Missouri

A.B. in Sociology

- | | |
|--|----------------------------------|
| Sodality 1, 2, 3, 4 | Athletic Association 1, 2, 3, 4 |
| Sodality Board 3 | Choral Club 1 |
| Mission President 3 | Lauretanum Staff 3 |
| Student Government Board 2 | Class Volleyball Team 1, 2, 3, 4 |
| National Student Association Delegate 3, 4 | |

Peggy, Marg, Jane





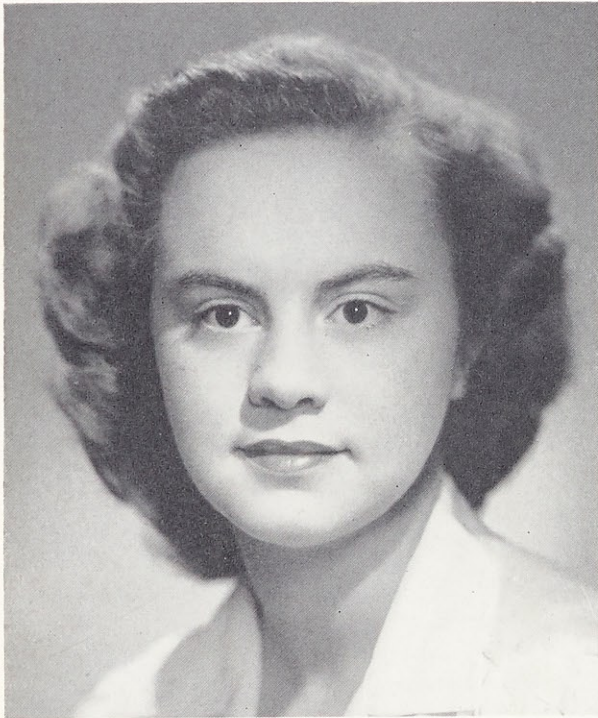
Seniors

Adeline M. M. Reinheimer

Cedar Hill, Missouri

A.B. in English

- | | |
|---------------------------------|-------------------------------|
| Sodality 1, 2, 3, 4 | South Side Section Club 1, 2, |
| Athletic Association 1, 2, 3, 4 | 3, 4 |
| Web Staff 1 | Mass Week Chairman 2 |
| Classical Club 2 | May Day 1 |
| Spanish Club 1 | Spring Dance Committee 4 |
| Choral Club 1 | Musicales Usher 1, 2 |



Mary Louise Schatzman

St. Louis, Missouri

A.B. in English

- | | |
|---------------------------------|-------------------------|
| Sodality 1, 2, 3, 4 | Loretto Players 1, 4 |
| Athletic Association 1, 2, 3, 4 | Musicales 3, 4 |
| West Side Section Club 1 | Class Volleyball Team 1 |

Madeline T. A. Reinheimer

Cedar Hill, Missouri

A.B. in English

- | | |
|---------------------------------|-------------------------------|
| Sodality 1, 2, 3, 4 | South Side Section Club 1, 2, |
| Athletic Association 1, 2, 3, 4 | 3, 4 |
| Web Staff 1 | Mass Week Chairman 2 |
| Classical Club 2 | May Day 1 |
| Spanish Club 1 | Spring Dance Committee 4 |
| Choral Club 1 | Musicales Usher 1, 2 |

Adeline, Madeline, Mary Lou



Seniors

D. Joan Schmiedeskamp

Kirkwood, Missouri

A.B. in Sociology

- | | |
|---------------------------------|----------------------------------|
| Sodality 1, 2, 3, 4 | Section Club 1, 2, 3 |
| Athletic Association 1, 2, 3, 4 | Class Volleyball Team 1, 2, 3, 4 |
| Bid Committee for Fall Formal 3 | Class Basketball Team 1, 2, 3, 4 |
| Musical Nominating Committee 2 | Sociology Club 3 |
| Musical 1, 2, 3, 4 | |



Audrey Anne Almstedt

St. Louis, Missouri

A.B. in Sociology

- | | |
|---------------------------------|-------------------------|
| Sodality 1, 2, 3, 4 | Spanish Club 1, 2 |
| Athletic Association 1, 2, 3, 4 | Red Room Committee 2 |
| Sociology Club 3 | Section Club 1, 2, 3, 4 |
| Dietetics Club 2 | |



Mary Elizabeth Shaw

St. Louis, Missouri

A.B. in Sociology

- | | |
|---------------------------------|----------------------------------|
| Sodality 1, 2, 3, 4 | Musical 1, 2, 3, 4 |
| Athletic Association 1, 2, 3, 4 | Class Volleyball Team 1, 2, 3, 4 |
| Sociology Club 3 | Class Basketball Team 1, 2, 3, 4 |
| Bid Committee for Fall Formal 3 | |
| Section Club 1, 2, 3 | |



Audrey, Joan, Betty





Seniors

Lucille Marie McAvoy

Joplin, Missouri

A.B. in English

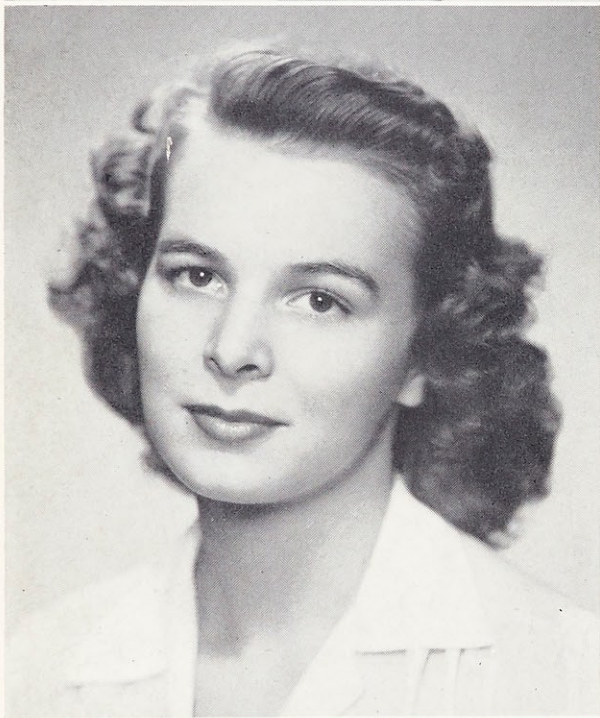
- | | |
|------------------------------|-----------------------------|
| Joplin Junior College 1 | Spanish Club 2 |
| Sodality 2, 3, 4 | Dietetics Club 2 |
| Athletic Association 2, 3, 4 | Choral Club 3 |
| <i>Web</i> Staff 3 | Musicale 2, 3, 4 |
| May Maid 2 | Co-Chairman, Costume |
| House Committee 4 | Committee 4 |
| Loretto Players 4 | Resolutions Committee |
| Chairman, C.S.M.C. Study | Student-Faculty Institute 4 |
| Club 4 | |

Nancy Braeckel

Joplin, Missouri

A.B. in English

- | | |
|------------------------------|------------------|
| Joplin Junior College 1, 2 | Poetry Club 3, 4 |
| Sodality 3, 4 | Archivist 4 |
| Athletic Association 3, 4 | French Club 3 |
| Athletic Association Board 4 | Choral Club 3 |
| May Maid 3 | |



Virginia Ann Stack

Kansas City, Missouri

A.B. in English

- | | |
|---------------------------------|------------------------------|
| Sodality Board 2, 3, 4 | International Relations Club |
| Student Government Board 3 | 2, 3, 4 |
| Athletic Association 1, 2, 3, 4 | Loretto Players 1, 2, 3, 4 |
| House Committee 1 | Chairman of Costumes, Musi- |
| <i>Lauretanum</i> Staff 3 | cale 3 |
| Loretine Staff 4 | Co-Chairman of Ads and Pa- |
| <i>Who's Who</i> 4 | trons, Musicale 4 |

Luke, Ginny, Nancy



Seniors

Rosa Gonzales

Lares, Puerto Rico

B.S. in Biology

Sodality 1, 2, 3, 4

Spanish Club 1, 2, 3, 4

Athletic Association 1, 2, 3, 4



Etelvina Gonzales

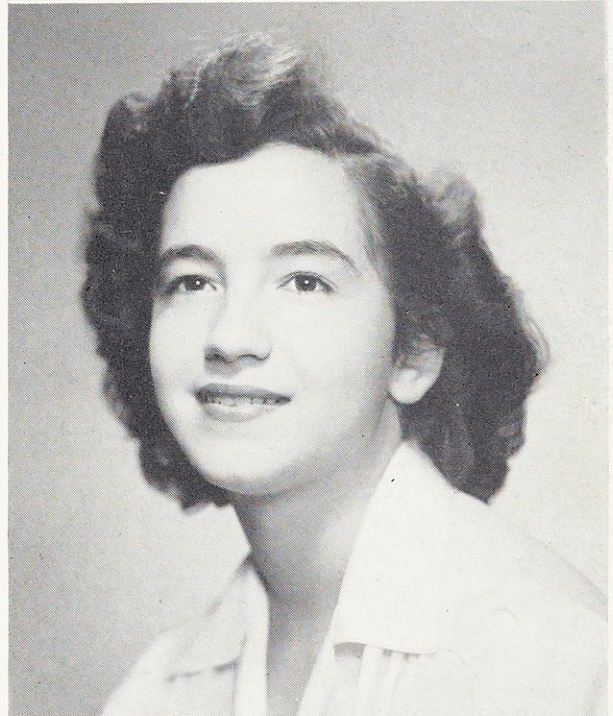
Lares, Puerto Rico

B.S. in Chemistry

Sodality 1, 2, 3, 4

Spanish Club 1, 2, 3, 4

Athletic Association 1, 2, 3, 4



Gloria Vieten

St. Louis, Missouri

B.S. in Dietetics

Athletic Association 1, 2, 3, 4

Language Club 4

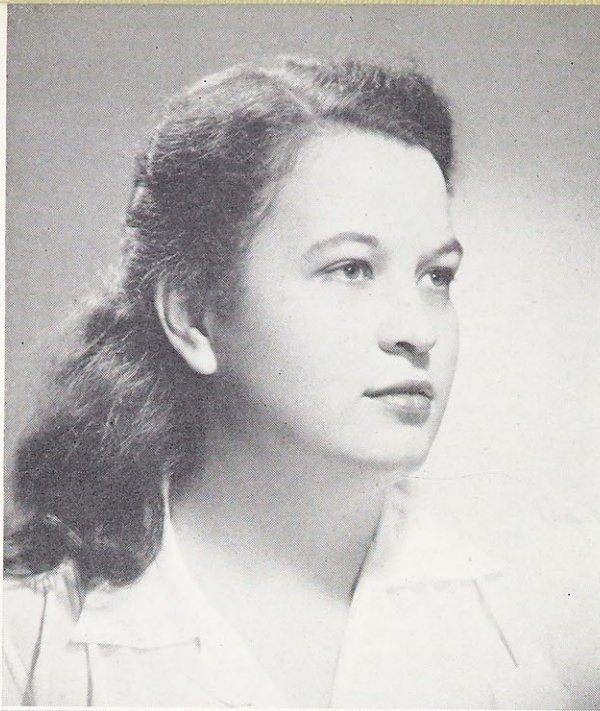
Dietetics Club 2, 3, 4

Spanish Club 1, 2



Gloria, Rosa, Etelvina





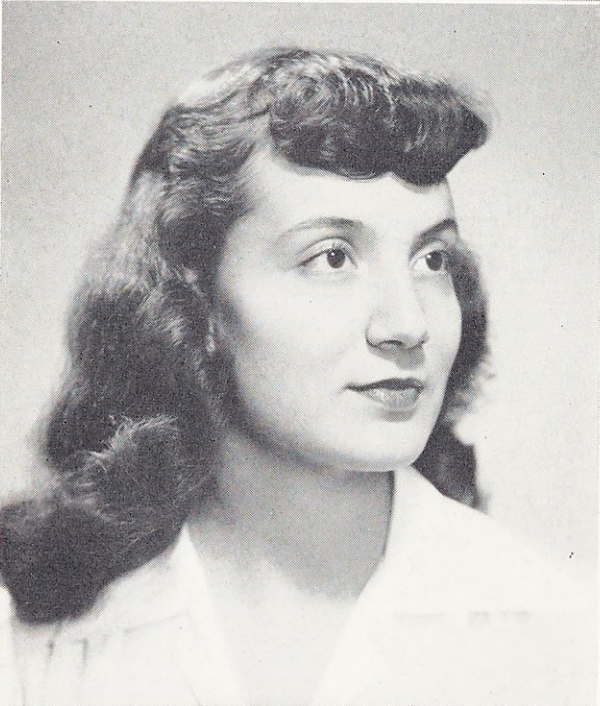
Seniors

Mary Margaret Hoffman

Paducah, Kentucky

A.B. in English

- | | |
|-----------------------------------|---|
| Sodality 1, 2, 3, 4 | Treasurer 4 |
| Nominating Committee 2 | Recital with St. Louis Women's Symphony 2 |
| Student Government Treasurer 3 | Kentucky Section Club President 4 |
| Athletic Association 1, 2, 3, 4 | Budget Committee 3, 4 |
| Lauretanum Staff 3 | Chairman 3 |
| Who's Who 3 | Publicity Committee, Fall Festival 3 |
| Loretine Staff 4 | Etcetera Staff 4 |
| Musical Chairman 4 | |
| International Relations Club 3, 4 | |



Selma Moossy

Shreveport, Louisiana

B.S. in Music

- | | |
|-----------------------------------|---|
| Sodality 1, 2, 3, 4 | Choral Club 1, 3, 4 |
| Athletic Association 1, 2, 3, 4 | Orchestra 2 |
| International Relations Club 3, 4 | Recital with St. Louis Women's Symphony 2 |
| Vice-President 3, 4 | |

Constance Richter

St. Louis, Missouri

B.S. in Music

- | | |
|---------------------------------|---------------------------|
| Sodality 1, 2, 3, 4 | Loretto Players 4 |
| Athletic Association 1, 2, 3, 4 | Musical 1, 2, 3, 4 |
| Choral Club 1, 2, 3, 4 | Music Guild 4 |
| Poetry Club 4 | South Side Section Club 1 |

Selma, Hoffy, Connie



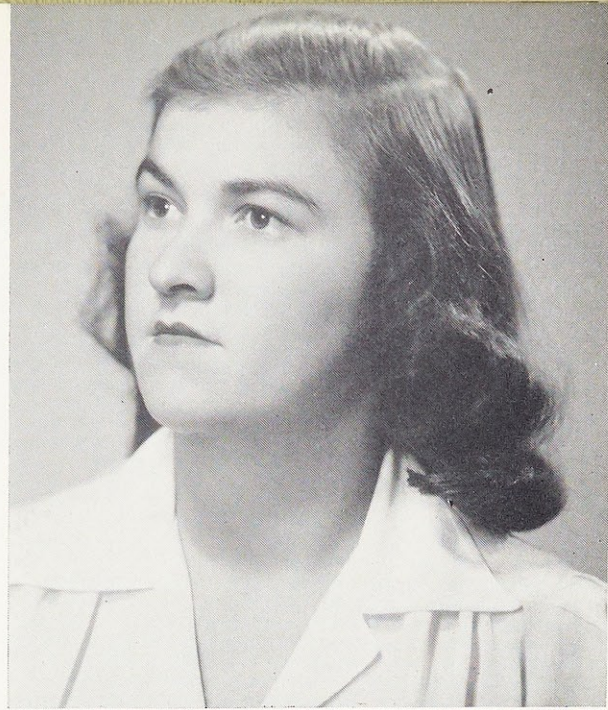
Seniors

Jacqueline Ann Laux

St. Louis, Missouri

B.S. in Dietetics

- | | |
|---------------------------------|-------------------------------|
| Sodality 1, 2, 3, 4 | Musical 1, 2, 3, 4 |
| Athletic Association 1, 2, 3, 4 | Section Club 1, 2, 3, 4 |
| Dietetics Club 1, 2, 3, 4 | Class Volleyball Team 1, 2, 3 |
| Secretary 4 | Sociology Club 2 |

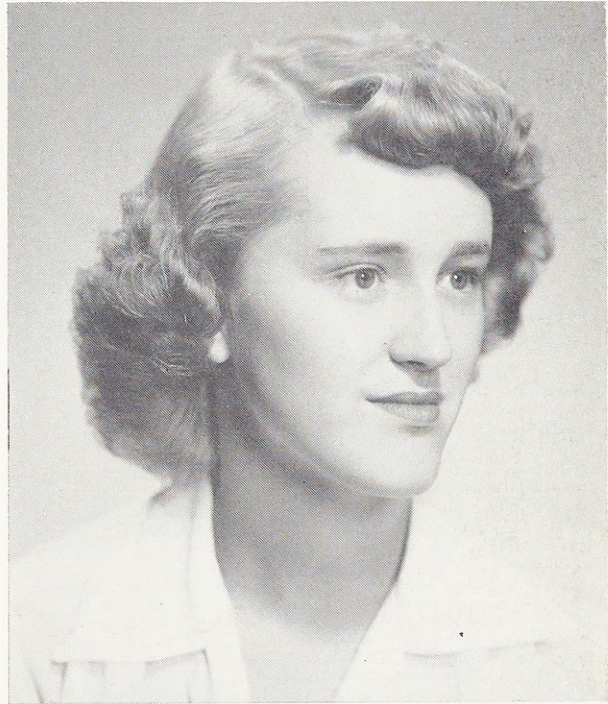


Elizabeth Burke Emmick

Lewisport, Kentucky

B.S. in Chemistry

- | | |
|--|-----------------------|
| Mount St. Joseph Junior Col-
lege 1 | Mathematics Club 2, 3 |
| Sodality 2, 3, 4 | Secretary 3 |



Charlotte Baumgarten

Owensboro, Kentucky

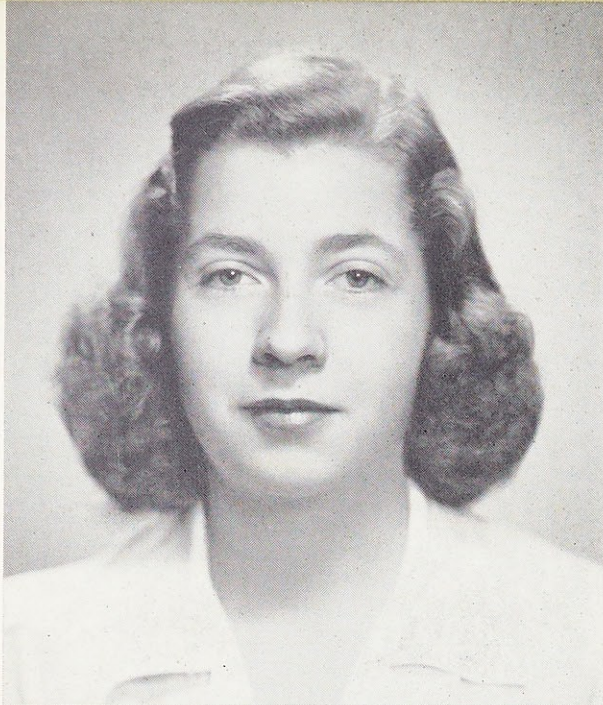
A.B. in English

- | | |
|--|--------------------|
| Mount St. Joseph Junior Col-
lege 1 | Loretto Players 3 |
| Web Staff 3, 4 | Treasurer |
| Loretto Staff 4 | Who's Who 4 |
| Poetry Club 3, 4 | Musical Chairman 3 |



Sally, Betty Chotz





Seniors

Mary Clare Toole

Butte, Montana

A.B. in English

- | | |
|---------------------------------|-------------------|
| Sodality 1, 2, 3, 4 | Loretto Players 1 |
| Student Government Board 4 | French Club 1, 2 |
| Athletic Association 1, 2, 3, 4 | Classical Club 2 |
| Loretto Staff 4 | |

Mary Agnes Coyle

Butte, Montana

A.B. in Sociology

- | | |
|---------------------------------|----------------------------|
| Sodality 1, 2, 3, 4 | Classical Club 2 |
| Athletic Association 1, 2, 3, 4 | Mathematics Club 2, 3, 4 |
| Web Staff 4 | Budget Committee 3 |
| Class Treasurer 3 | Western Section Club 1, 2, |
| International Relations Club | 3, 4 |
| 4 | Vice-President 3 |
| French Club 1, 2 | |



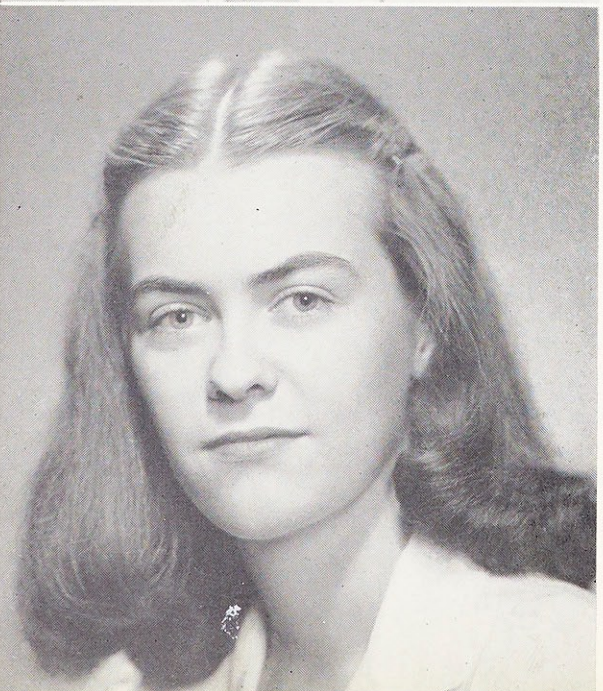
Ann Carlisle Rozier

Farmington, Missouri

A.B. in Sociology

- | | |
|---------------------------------|-------------------------------|
| Sodality 1, 2, 3, 4 | Initiation Investigation Com- |
| Athletic Association 1, 2, 3, 4 | mittee 1 |
| International Relations Club | Spanish Club 1, 2 |
| 2, 3, 4 | Classical Club 1 |
| Secretary 3 | Musical 1, 2, 3, 4 |
| Chairman of Project 3 | Class Volleyball Team 1, 2, |
| President 4 | 3, 4 |
| Nominating Committee 2 | Class Basketball Team 1, 2, |
| Social Affairs Committee 4 | 3, 4 |
| May Day Committee 3 | |

Anne, Smoky, Mary Agnes



Seniors

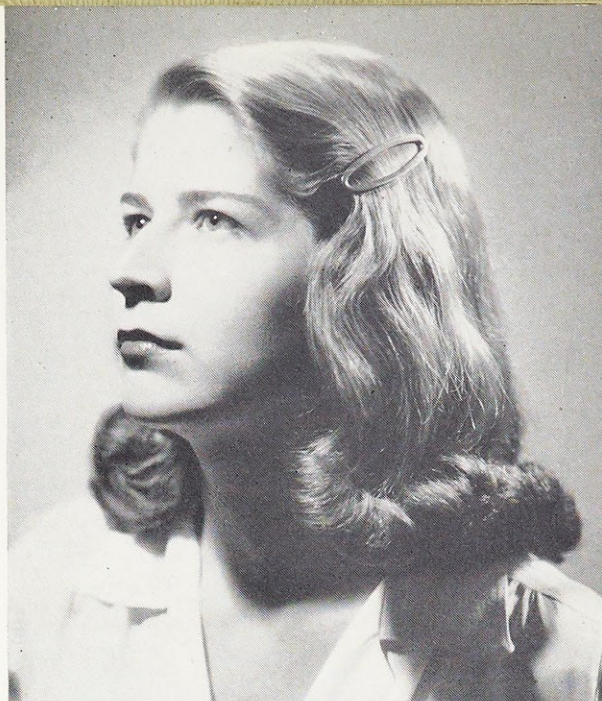
Mary Medley

Owensboro, Kentucky

B.S. in Biology

Nazareth College 1
Sodality 2, 3, 4
Athletic Association 2, 3, 4
Social Affairs Committee 4

Representative to House Com-
mittee 3
Secretary of Kentucky Sec-
tion Club 4



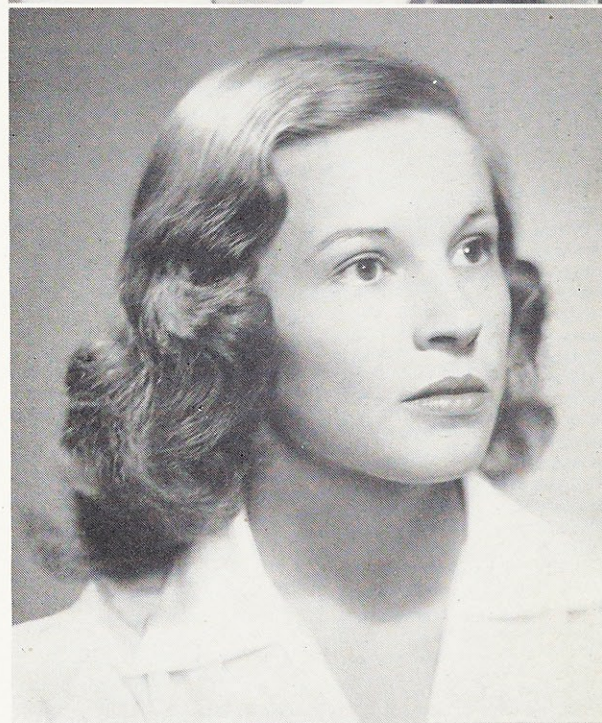
Joanne Poat

Paducah, Kentucky

B.S. in Biology

Nazareth College 1
Sodality 2, 3, 4
Athletic Association 2, 3, 4
Vice-President Southern Sec-
tion Club 3

Vice-President, Kentucky Sec-
tion Club 4
Musicale 3, 4
Program Co-Chairman for
Musicale 4



Sister Dolores Ann Rapp, Ad. P.P.S.

Pauline Cheng

Joanne, Mary





Class

Patricia Cronin, treasurer; Mary Sam Norris, secretary; Marianne Julius, vice-president; Mary Ann Dunsford, president



of

Loretto Reynolds, Bertha Henry, Mary Tom Woollard, Elizabeth Grace, Marilyn Smith



1950

Dorothy Welsh, Margaret Wolfe, Kathlyn Moore, Dorothy Thomas, Sally Weinecke, Ann O'Bryan

Class

Margaret Meyrose, Lois Stuever,
June Murphy, Mary Lee Holland,
Veronica Murphy



of

Rosaline Shen, Maria Gonzalez, Jeanette Jackson, Pilar Fernandez, Juliana Tong, Irene Thomas



1950

Anna Kraft, Joanne Burke, Joanne Field, Jo Ann Ritter, Ann Keefer





Georgianne McVay, Joan Dufner,
Carol Dunphy, Mildred Riffel, Patricia Whittington



Violet Ball, Delores Green, Dorothy Mullally, Joyce Voss, Mary Hellwig



Adele Heumann, Anna Mae Kellogg,
Angela Donati, Mary Ann Lakin,
Mary Ellen Kelley

Class

of

1950

Class

Ethel Zilliken, Armalie Mott, Friederika Dolezal, Rosemary Collins, Anita Giannatelli



of

Patricia Paul, Mary Virginia Cooper, Jeanne Reno, Jacqueline Hellman, Marie Carroll



1950

Mary Jane Higgins, Mary Patricia Kehoe, Rita Mae Sloan, Marian Kienzler, Maureen Starbuck



Class of 1951

Alma Monnig, vice-president; Jean Mattingly, secretary; Joan Peters, treasurer; Helen Pearson, president

Margaret Ahearn, Anna Hohn, Ruth Schumacher, Shirley Elsey, Elizabeth Compton



Sybelline Doyle, Helen Manion, Joan Kavanaugh, Dorothy Sue McKay, Miriam Knight, Mary Schaeffer

Madeline Evans, Shirley Bader, Elizabeth Louise Hudson, Joan Boone, Alice Mary Casey

Class of 1951

Marilyn Ruebling, Doris Nicholson, Diane Peters,
Martha Vogelgesang, Jeanette Fresenburg

Lisabeth Mathis, Frances Melsheimer, Marian Hel-
gason, Louise Gioia, Patricia Gits



Mary Therese Lavery, Mary Jane Wieck, Mary Alice
Franzman, Anna Mae Donnelly, Frances Catanzaro

Thelma Massery, Mary Ann Watson, Marian Maz-
zoni, Josephine Willard, Kathleen O'Malley

Class of 1951

Jeanne Jostrand, Patricia Roche, Jane Wheeler,
Nina Jones, Patricia Edelmann



Clarinne Benanti, Harriet Porter, Dolores Yates,
Mary Frances Stevinson, Mary Ellen Kilker



Patricia Scally, Mary Joan Van Brunt, Catherine
Higgins, Dorris Fleck, Joan Ewinger



Mary Louise McFadden, Mrs. Barnicle, Caroline
Hunt, Lucy Lee, Olga Bachicha, Ana Ramirez

Class of 1951

Susan Buckler, Rose Ann Sloan, Julia Malapit,
Teresa McGinn, Joan Romey

Roselyn Walker, Grace Mazzoni, Mary Schlotter-
beck, Dolores Gualdoni, Jeannine Cahill, Jacqueline
Crawford



Barbara Haxton, Marilyn Ewing, Doris Zoellner

M. Antonieta Uranga, Carol Fowler, Jeanette
Jablonski, Winifred Foy, Suzanne Schwartzel

Class of 1952

Mary Ann Tank, Mary Ellen Downey, Barbara Koch, Mary Louise Rausch, Rita Voigt, Patricia Higgins, Shirley Bertels, Mary Olszewski, Juanita Brungardt

Jeanine Fox, Patricia Walsh, Joan Schuler, Carol Pfeffer, Geraldine Washington, Mary Louise Ganley



Joyce Baber, Elizabeth Ainsworth, Priscilla McCann, Rose Marie Kribs, Shirley Vanek, Helen Graser, Virginia Kurtzborn, Sara Sarullo, Mary Saracini

Martha Sloan, Dorothy Willard, Rita Guthrie, Joan Welsh, Ann Blandford, Martha Belcher, Odalie Wittges, Rosemary Fuesting, Marguerite West

Class of 1952

Rita Rinker, Elaine Temme, Jean Kelley, Eileen Winther, Mary Lee Holzem, Jeanne Devereux, Elizabeth Benning, Catherine Baine

Leslynn Benson, Mary Margaret Bannister, Catherine Steger, Marrison Reed, Dolores Kuhlman, Mary Jane Ritayik, Shirley McCartney, Carol Gebhart



Elena Terrazas, Doris Simmons, Virginia Raab, Patricia Meyer

Betty Burggraf, Joan Harrington, Marian Sly, Mary Jean Wood, Elizabeth Wagner, Elizabeth Girvin, Beverly Fiorella, Elizabeth Jean Jones

Class of 1952

Mary Josephine Klein, Mary Ann Grashoff, Charlotte Schmitt, Doris Gruner, Ellen Kent McNamara, Freda Coon, Barbara Meier, Patricia Powers, Mary Bunbury

Shirley Zickel, Joan Bulte, Martha Abbott, Patricia Kinsella, Mary Abbott, Virginia Feeney, Mary Komer, Dorothy Fisher, Margaret Kolasch, Helen Snook

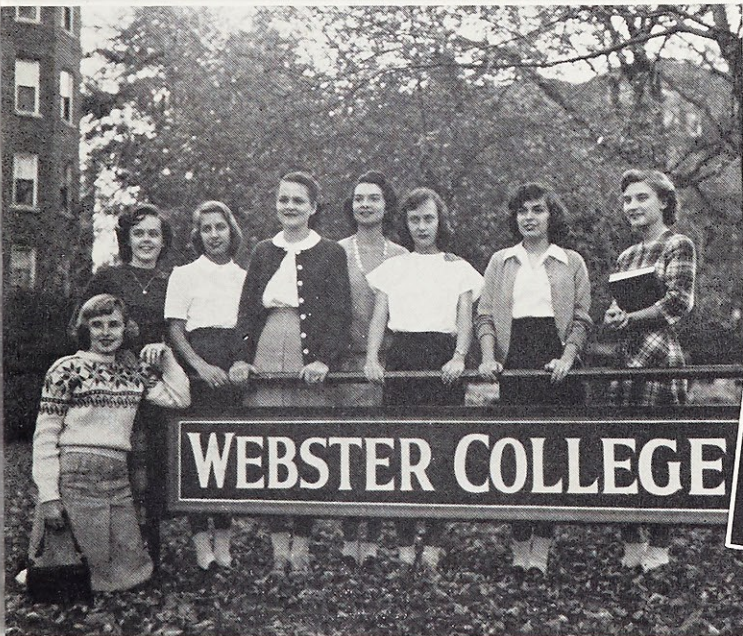


Marjorie Fehling, Elizabeth Ratterman, Joan Federer, Helen Reis, Lolita Winter, Jo Ann LeCompte, Patricia Clark

Joan Hoogstraet, Elizabeth Banks, Alice Ehernberger, Anne Shaub, Eileen Franke, Elizabeth Compton, Patsy Lee Kelley

Class of 1952

Patricia Flood, Carmalita Stanka, Gretchen Oberste,
Miriam Reedy, Mary Lue Cross, Barbara Meyer,
Patricia Davis, Irene Wiggins, Joan Garvey



Paula Garvin, Joan Dickhaus, Mary Josephine Hillner,
Kathleen Murphy, Barbara Faure, Joan Dubuque,
Mary Elizabeth Tinker, Rita Krebs



Dolores Kahalley, Jean Reilly, Lois AuBuchon,
Margaret Schoenfeld, Janet Garbacz, Jacqueline Mousel,
Jeanne Shatsby, Patricia McQuie

Activities

This is the leadership laboratory of our education. From classes and from the hallowed corridors of the Ad building we proceed to Loretto Hall and to meetings; to the auditorium and student convocations; to the gym and to basketball; but wherever we go, we know that God goes with us. Our co-curricular activities accentuate both the physical and the spiritual. It is our duty to limit our activities to those which successfully supplement our daily lives and which we are able to pursue faithfully.

Here we can find the physical and the spiritual, two more factors contributing to the formation of our integrated Ideal Webster Girl.



Our Lady's



Prefect Rosemary Schmuck

Under the protection of Our Lady, Webster Sodalists aspired to the realization of their ideal in the imitation of their Patroness. October, the month of the Holy Rosary, was dedicated to spiritual development through increased attendance at daily Mass. January retreats brought Fathers Louis Hanlon, S.J., and Charles Clark, S.J., and three days permeated with the full realization of the nearness of God. The C.S.M.C. Study Club discussed the false philosophies of Descartes, Comte, Bacon and others. Sodality May Day came and Our Queen was crowded with a garland of flowers, continuing her reign as the perfect model of the Ideal Webster Girl.



Dorothy Mullally, Susan Buckler, Elizabeth Louise Taylor, Frances Catanzaro, Virginia Stack, Rosemary Schmuck, Joyce Voss, Jeanne Reno, Josephine Serafini, Joan Mazzoni, Rose Marie Saner, Doris Schnur, Rita Mae Sloan

Sodality

OFFICERS

- Prefect*.....Rosemary Schmuck
- Vice-Prefect*.....Joyce Voss
- Secretary*.....Susan Buckler
- Treasurer*.....Rita Mae Sloan
- Senior Representative*.....Doris Schnur
- Junior Representative*.....Jeanne Reno
- Sophomore Representative*
Frances Catanzaro
- Freshman Representative*
Mary Margaret Bannister
- Sodality Union Representative*
Josephine Serafini
- Student Government Representative*
Rose Marie Saner
- Hall Representative*.....Joan Mazzoni

COMMITTEE CHAIRMEN

- Mission President*.....Dorothy Mullally
- Eucharistic*.....Virginia Stack
- Our Lady's*.....Elizabeth Louise Taylor

First Friday Mass and Adoration continued along with Holy Hour. Memorares were said daily to Our Lady of Fatima, invoking her aid for the success of the Musicale. Reception of new Sodalists was held in the spring. The new statue of the Sacred Heart watched over the work and activities of all Websterites.



Sodality May Day: Mary Ann Dring and Rosemary Schmuck



Joyce Voss, vice-prefect; Rita Mae Sloan, treasurer; Susan Buckler, secretary; Rosemary Schmuck, prefect



Ann Michenfelder, Mary Ann Dunsford, Rosemary Schmuck, Veronica Murphy, Helen Pearson, Mary Ellen Kilker, Katherine Daly, Rose Marie Saner, Jo Ann Ritter, Joan Mazzoni, Catherine Jostedt, Carol Dunphy, Mary Clare Toole, Jean Kelley, Odalie Wittges

Student Government



Katherine Daly, secretary; Rose Marie Saner, president; Veronica Murphy, vice-president; Jo Ann Ritter, treasurer

- President*.....Rose Marie Saner
- Vice-President*.....Veronica Murphy
- Secretary*.....Katherine Daly
- Treasurer*.....Jo Ann Ritter
- Senior Class President*....Ann Michenfelder
- Faculty Representative*....Mary Clare Toole
- Junior Class President*
Mary Ann Dunsford
- Faculty Representative*.....Carol Dunphy
- Sophomore Class President*
Helen Pearson
- Sophomore Class Representative*
Mary Ellen Kilker
- Freshman Class President*....Odalie Wittges
- Freshman Class Representative*
Jean Kelley
- Sodality Prefect*.....Rosemary Schmuck
- Hall President*.....Joan Mazzoni
- Athletic Association President*
Catherine Jostedt

The distinctive project of the Student Government Association this year was the Student-Faculty Institute held before classes resumed in September. This Institute, through panel discussions concerning the objectives of Webster and the means which should be used to attain them, served to bring to each girl's mind the importance of her place in the Association as a step toward assuming her place in society after leaving Webster.



Rose Marie Saner, president

Association



The Student Government Association in one of its weekly meetings



Athletic Association Board
The Varsity

Athletics contributed to the integration of the Ideal Webster Girl. February was devoted to the development of the physical. School spirit was reflected at Varsity games and at class basketball and volleyball tilts. The sophomores were victorious in the volleyball tournament and a senior, Doris Schnur, won the ping-pong championship.

The point system was revised and Websterites joined bowling, swimming, riding and ice-skating

groups to work for their letters. Miss Gund and Bonny cooperated in adding interest to Athletic Association meetings. Cheerleaders Betty Lou, Jane, Jackie, Jean, Miriam and Peggy led Webster delegations in spurring on the Varsity. Webster's basketball team donned new uniforms. The Athletic Association provided for the development of the physical aspect of the Ideal Webster Girl.

athletic Association

- President.....Catherine Jostedt
- Vice-President.....Kathlyn Moore
- Secretary.....Joan Boone
- Treasurer.....Anna Kraft
- Senior Representative.....Nancy Braeckel
- Junior Representative.....Dorothy Welsh
- Sophomore Representative
Josephine Willard
- Freshman Representative....Elizabeth Banks



Catherine Jostedt, president



Nerinx-Webster Gymnasium

Choral Club



Orchestra

Miss Pech, Joyce Voss, Winifred Foy,
Selma Moossy, Ann Kellogg, Beverly
Fiorella, Joanne Field, Joan Hoogstraet,
Mary Lee Holzem

The orchestra, reorganized after a lapse of one semester, continued under the direction of Miss Helen Pech. Because of the late start, the appearances of the orchestra have not been too numerous this year although it was heard at President's assemblies. This group, however, will be a nucleus around which the orchestra for next year will be formed.

Miss Kay Stamper, Director of the Webster College Choral Club, came to Webster only this year. The Choral Club, composed of about seventy-five members, sang at the Christmas Pageant, over the radio and at assembly. At Christmas they participated in the program of the Caroling Association of St. Louis. They have also taken part in programs held at other schools during the year.

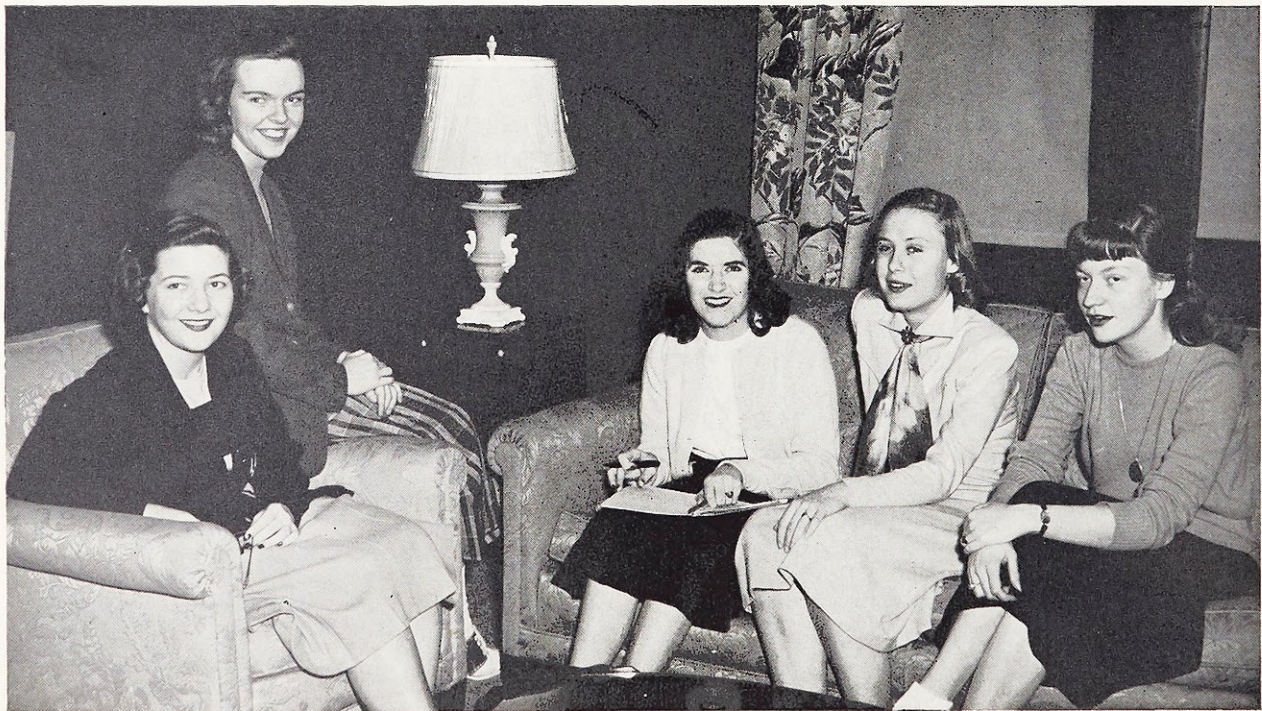


Joan Mazzoni, Hall President

House Administration

Fine Arts and Spiritual Committees assisted Joan and her House Committee. In October the nuns inspected the parlor and Reading Room at the fall housewarming. The boarders exchanged gifts at the Christmas party, held in the Ivy Room.

Hall President.....Joan Mazzoni
Senior Representative.....Lucille McAvoy
Junior Representative.....Ann O'Bryan
Sophomore Representative
Kathleen O'Malley
Freshman Representative....Lois AuBuchon

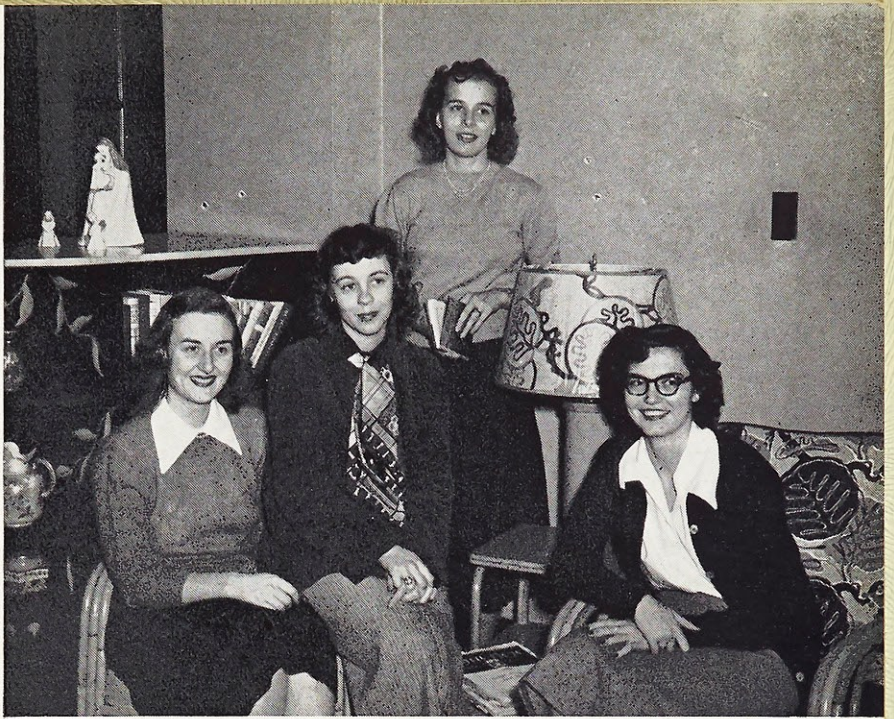


Lois AuBuchon, Kathleen O'Malley, Joan Mazzoni, Lucille McAvoy, Ann O'Bryan

Poetry Club

The Poetry Club, one of the oldest organizations at Webster, contributes to the encouragement of creative writing by requiring creative efforts both for entrance and for continued membership. Many potential poets were "discovered" among the Freshmen this year.

Josephine Serafini, president; Elizabeth Louise Taylor, vice-president; Nancy Braeckel, archivist; Bertha Henry, secretary-treasurer.



Language Club

Classical, French, and Spanish groups united to discuss the epics—*Iliad*, *Odyssey*, *Chanson de Roland*, *El Cid*. Christmas Gospels were read in Greek, Latin, French, and Spanish.

Mary Ann Lakin, secretary-treasurer; Joan Krebs, president; Anna Kraft, vice-president.

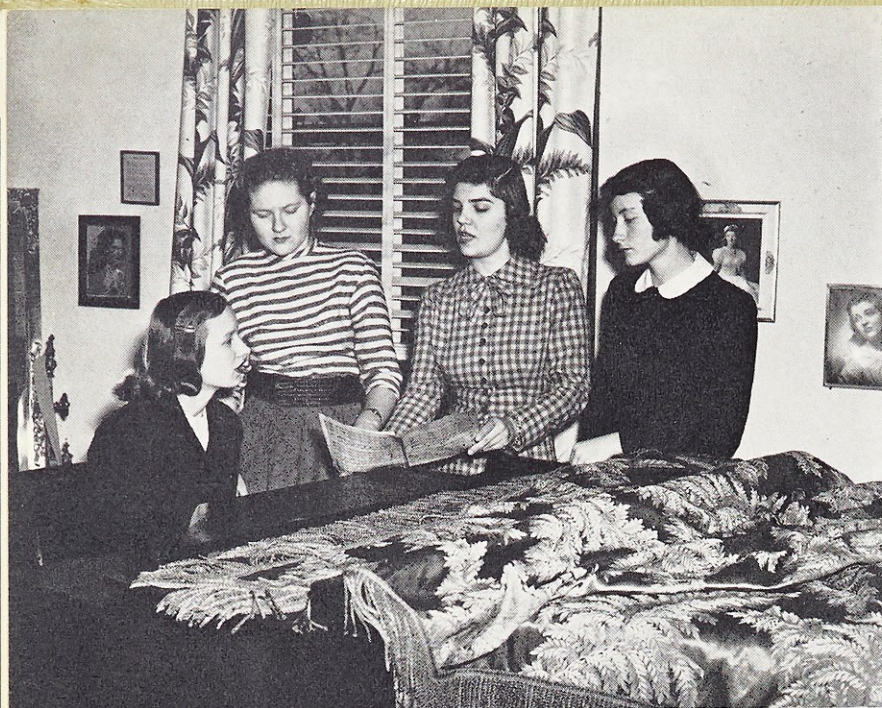


International Relations Club

I.R.C. members began their study of government types under a new moderator, Sister M. Frederic. The third annual inter-collegiate panel, held here in the fall, discussed "World Governments." Club members attended a foreign policy panel at Lindenwood College.

Anne C. Rozier, president; Mary Lee Holland, secretary; Selma Moosy, vice-president; Mary Margaret Hoffman, treasurer.





Music Guild

A new organization was born at Webster when the music students and students interested in music formed the Music Guild. Meetings provide opportunities for informal recitals and discussions of musicians and their works. Subjects of discussion and recitals range from Bach to Gershwin.

Jeanette Jablonski, president; Elizabeth Compton, publicity manager; Ruth Schumacher, secretary-treasurer; Elizabeth Grant, vice-president.



Dietetics Club

Under the invigorating sponsorship of Miss Heiss, the Dietetics Club reorganized its constitution and had the first formal initiation of members. The Club served tea for Loretto Day and took part in other activities in which their services were very helpful.

Mary Elizabeth Thornhill, president; Eileen Dunn, program chairman; Joan Dufner, vice-president; Jacqueline Laux, secretary; Susan McKay, treasurer.



Loretto Players

The Importance of Being Earnest began the 1948-49 season of the Loretto Players. The directing class produced a series of one-act plays. Webster's traditional all-school Christmas Pageant was revived. Loretto Players traced the history of the Webster College theatre. *Romeo and Juliet* added the final highlight to an eventful season.

Jean Mattingly, secretary; Sybelline Doyle, treasurer; Elizabeth Louise Taylor, president; Ann Michenfelder, vice-president.

Who's Who

Students and faculty chose these nine girls to represent Webster in *Who's Who among Students in American Colleges and Universities*. Their achievements represent projects in which all Websterites have cooperated—Sodality, Student Government, National Federation of Catholic College Students, National Student Association, publications, and other co-curricular activities. Their outstanding character, leadership in co-curricular activities, and scholarship are manifestations of their striving toward the goal of Ideal Webster Girl.

1948

Mary Margaret Hoffman Rose Marie Saner

Elizabeth Louise Taylor

1949

Charlotte Baumgarten Joan Mazzoni

Angela Donati Veronica Murphy

Margaret Mason Virginia Stack



Mary Margaret Hoffman, Joan Mazzoni, Margaret Mason, Elizabeth Louise Taylor, Virginia Stack, Charlotte Baumgarten, Veronica Murphy, Angela Donati, Rose Marie Saner



"Lucky in Love"



"The Donkey Serenade"



"The Fireman's Bride"



"I Wonder Who's Kissing Her Now"

Make

Mine

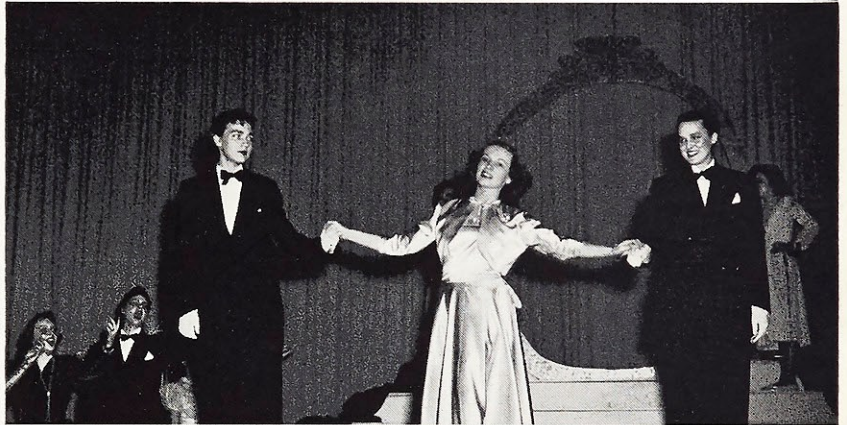
Muny"

"Wintergreen for President"



"Make

"Of Thee I Sing"



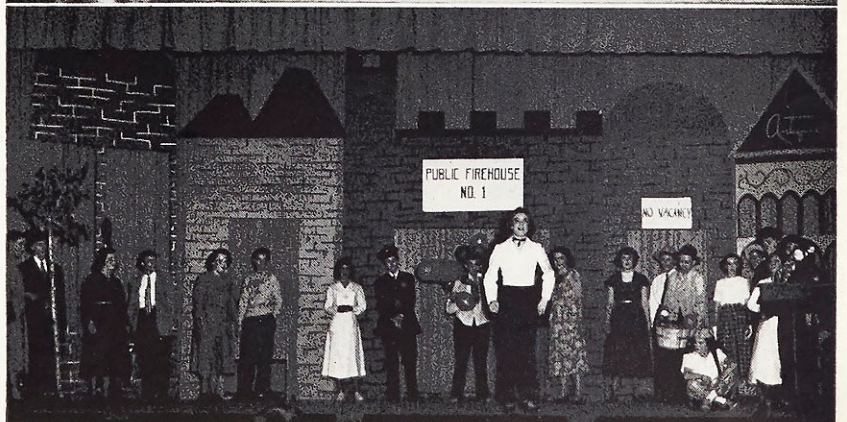
Mine

"Begin the Beguine"



Muny"

"Thou Swell"



Social

Here is the compensation corner of our education: the natural complement of relaxation for mind-challenging classes. Activities classed under the "substitution reaction" division of psychology. They range from organized affairs like dancing at the Starlight Roof to spontaneous "coke" parties and heated debates. These are the leisure moments spent at Webster and at home—spent by youth in search of an education.

Here is the individual, domestic and social development of the character of the Ideal Webster Girl. When all ingredients are there in the right proportions, when the character is integrated spiritually, physically and socially, then you have found what all Webster is looking for—the Ideal Webster Girl.





The Fall Formal

Formal Dances



The Mid-Winter Promenade

The social season at Webster was initiated with the Fall Formal held at the Starlight Roof of Hotel Chase. Music provided by Herb Mahler and his Orchestra proved perfect for dancing. The seniors were honored guests at the Mid-Winter Dinner Dance: Missouri Athletic Club was the scene; February eleventh the date. White leather programs, imprinted in gold, with the names of the seniors under the Webster crest, were given as tokens of remembrance.

Educational Tour

The Webster delegation left from Union Station on March 26. Easter morning Mass in Georgia was followed by sight-seeing in Jacksonville and Miami. The Deauville-McFadden lived up to advance notices and even provided sunbathing and swimming facilities. A boat trip to Havana, a visit to rural Cuba and then back again to the mainland. The long trip home to Webster. We may never return, but we will always remember everything we did and learned on our educational tour of Florida and Cuba.

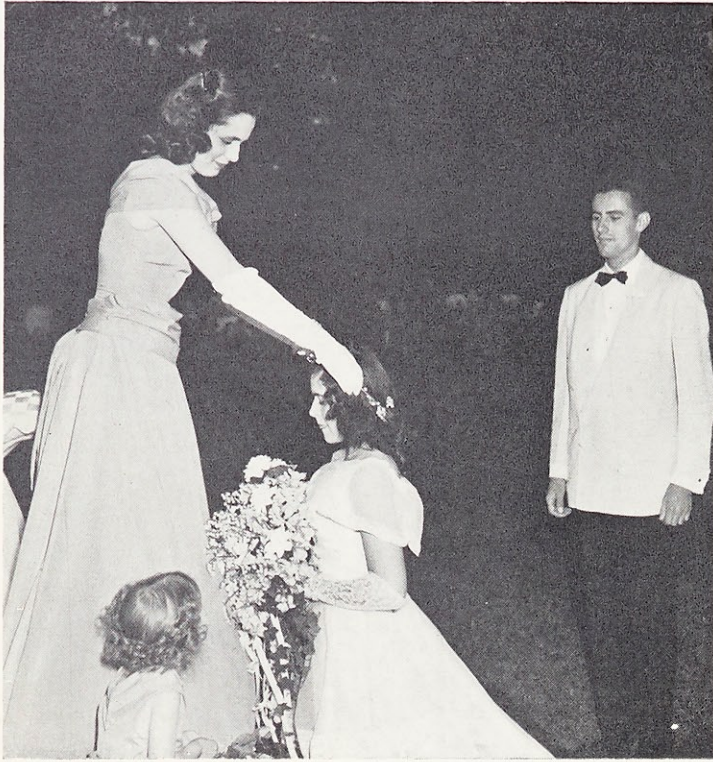


Leaving from Union Station



The Webster delegation

May Day



Joan is crowned by Retiring Queen Jeanne Sheridan

"The Nutcracker Suite" formed the background for the Fairyland theme of May Day. Raindrops, Sugar Plum fairies, Elves joined the Fairy Princess to entertain Queen Joan and her Court. As busy as the Webster girls are, they have time to pause on a lovely spring evening, to recall similar spring evenings of many previous years and to honor formally the traditional Queen of Love and Beauty. The gracious old tree on the back campus once more made a perfect backdrop for the colorfully gowned maids of the Court and their escorts. The formal dance at Norwood completed the evening in a fitting manner.

The May Court



Joyce Voss, Sophomore Representative; Nancy Braeckel, Junior; Madeline McMahan, Senior; Virginia Rosenthal, Senior; Jeanne Sheridan, Retiring Queen; Joan Mazzoni, Queen; Lorene Peck, Senior; Virginia Mitchell, Junior; Kathlyn Moore, Sophomore; Mary Joan Van Brunt, Freshman; Dorris Fleck, Freshman.

Resolutions of the Faculty-Student Institute of 1948

We, the students of Webster College, as members of the Mystical Body of Christ, do hereby resolve, through self-activity, to take advantage of the spiritual, intellectual, social, and physical opportunities offered us, in order the better to know, love, and serve God, and thereby achieve our goal, the Ideal Webster Girl.

We, the Resolutions Committee of the Faculty-Student Institute, would ask the student organizations of Webster College to be mindful of the resolution just presented in all projects and activities undertaken throughout the year.

We further recommend that the month of October be devoted to our Spiritual development by increased attendance at week-day Mass; that November be devoted to our Intellectual development by emphasis on improving study habits; that December be devoted to our Social development by carrying out the real idea of Christmas manifested by love of neighbor; that February be devoted to our Physical development manifested by adequate sleep and out-door exercise; that March be devoted to our Moral development as expressed in self-denial; and that April be devoted to our Domestic development by each taking a personal interest in the care of our surroundings.

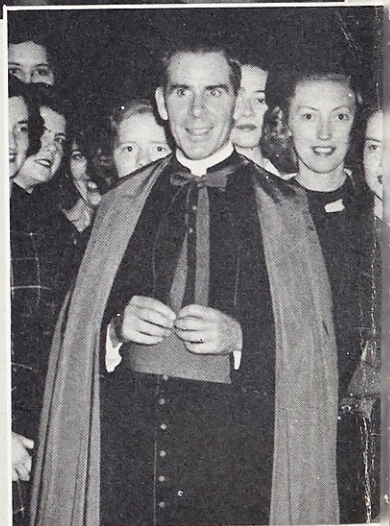
Respectfully submitted to the Student Government Association
of Webster College this 28th day of September, 1948, by:

Sister Helen Clare, S.L.
Sister Mary Louise, S.L.
Carol Dunphy
Mary Clare Toole
Mary Frances King
Lucille McAvoy
Mary S. Norris
Joyce Voss
Shirley Bader
Alice Mary Casey

Resolutions Committee of the Faculty-Student Institute
of Webster College of September, 1948.

October

Devoted to Our Spiritual Development



Bon Voyage!

Anna and Cousin

Dumb Bunnies

Pilgrim Virgin

Haut Cinders!

Anticipatory Happy Hallowe'en

Monsignor Sheen

November

Devoted to Our Intellectual Development



Panda Pull

Mob Scene

Where's the Postman?

Father Lord's Circle

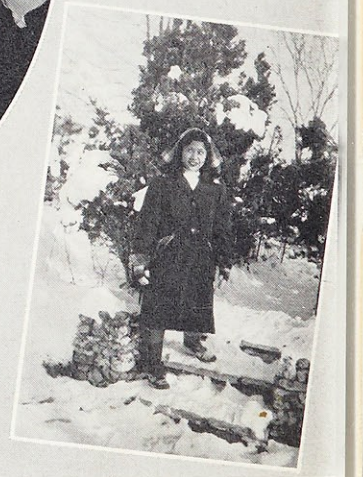
Shipmates

Orientation

Susie and St. Joan

December

Devoted to Our Social Development



Saludos Amigos

Stag Party

Not a Creature Was Stirring

All Time Favorites

Girls on Leave

Shmoo and Two

Out of Her Element

February

Devoted to Our Physical Development



Gawrsh!

Shooting Match

Long Tars

Perpendicular

How do you do?

Go on home, Baby

Cheer Corps

Double Bubble

Going home

Stag Line

Dryad

Cheezit, the cops! Posing

Audition

March

Devoted to Our Moral Development



Car Party

Moose Call

Who Dat?

Flower Pot

Home of the Irish

Chapel Brigade

The Open Door Policy

Our Duncie

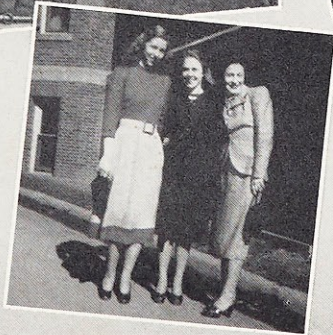
There are Smiles—

Family Affair

Step Down

April

Devoted to Our Domestic Development



Return Postage Guaranteed

Sunshine

The Smart Set

The Twain Have Met

Avez-vous jaim?

The Little One

Washed Out

Department Dietetics

Formal Photographs and Division Pages
Edwyn Studios

Informal Photographs
Sister M. Germaine, S.L.
Glenn Ogle

Engraving
Central Engraving Company

Covers
The Beckett Company

Printing and Binding
Eden Publishing House

Designed by
Harry J. Swain, Jr.