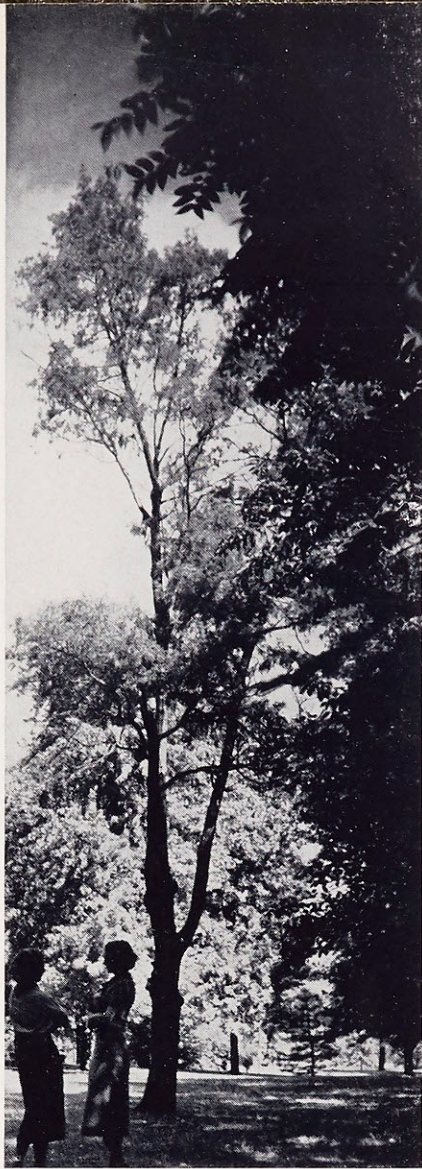


L
B



LAVRETANVM

SISTER FRANCES MARIE



ANOTHER YEAR



at

Webster College

OUR ACTIVITIES

Chroni-cled by

MARY FRANCES KNOEDELSEDER
Editor-in-Chief

PAT COSTELLO
Assistant Editor

MARY JANE HOULIHAN
Business Manager

MARY MARGARET KOENITZ
Advertising Manager

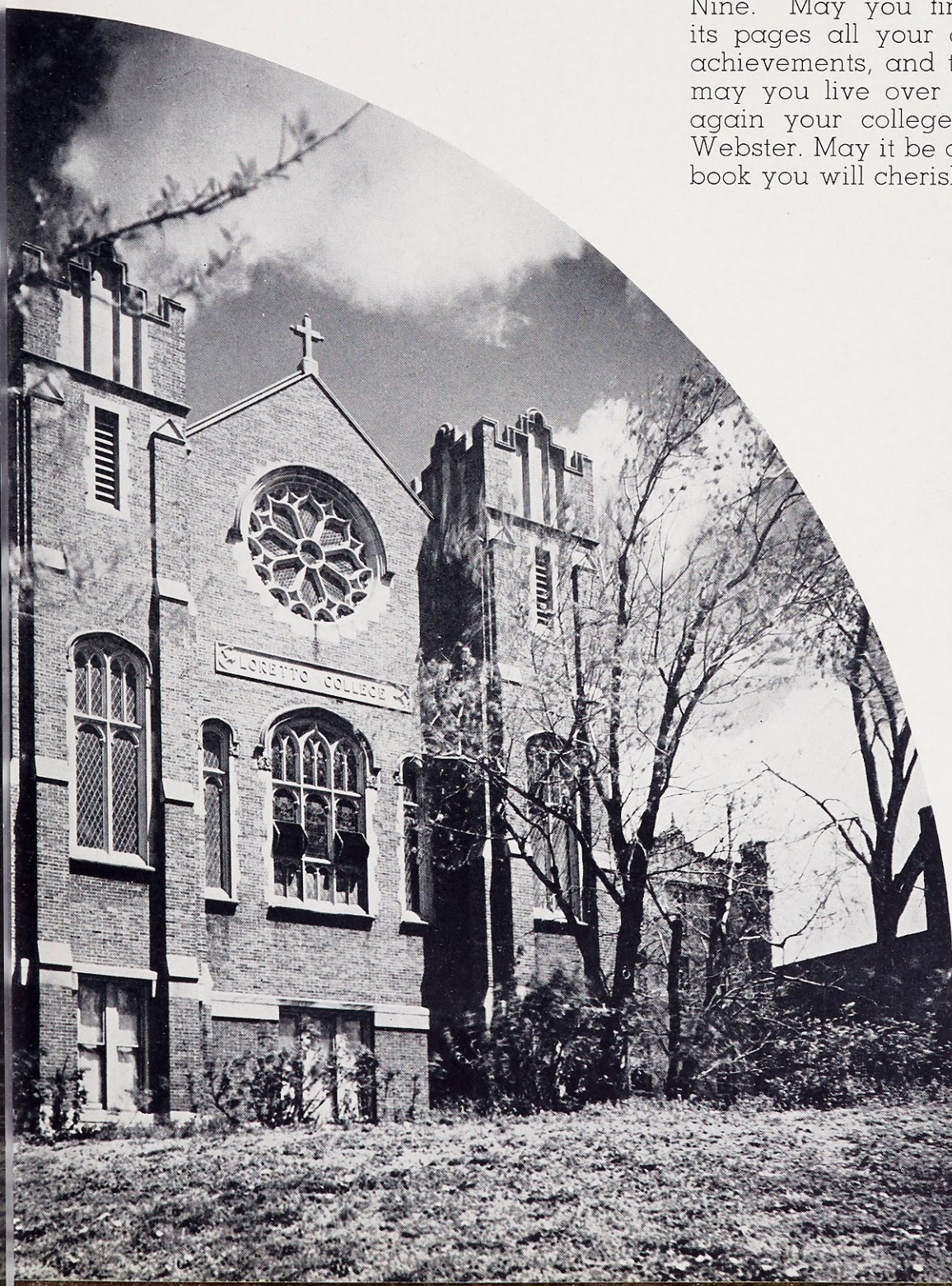
ELIZABETH POLLMANN
Circulation Manager

MARJORIE BELT
Art Editor



To the STUDENT
BODY

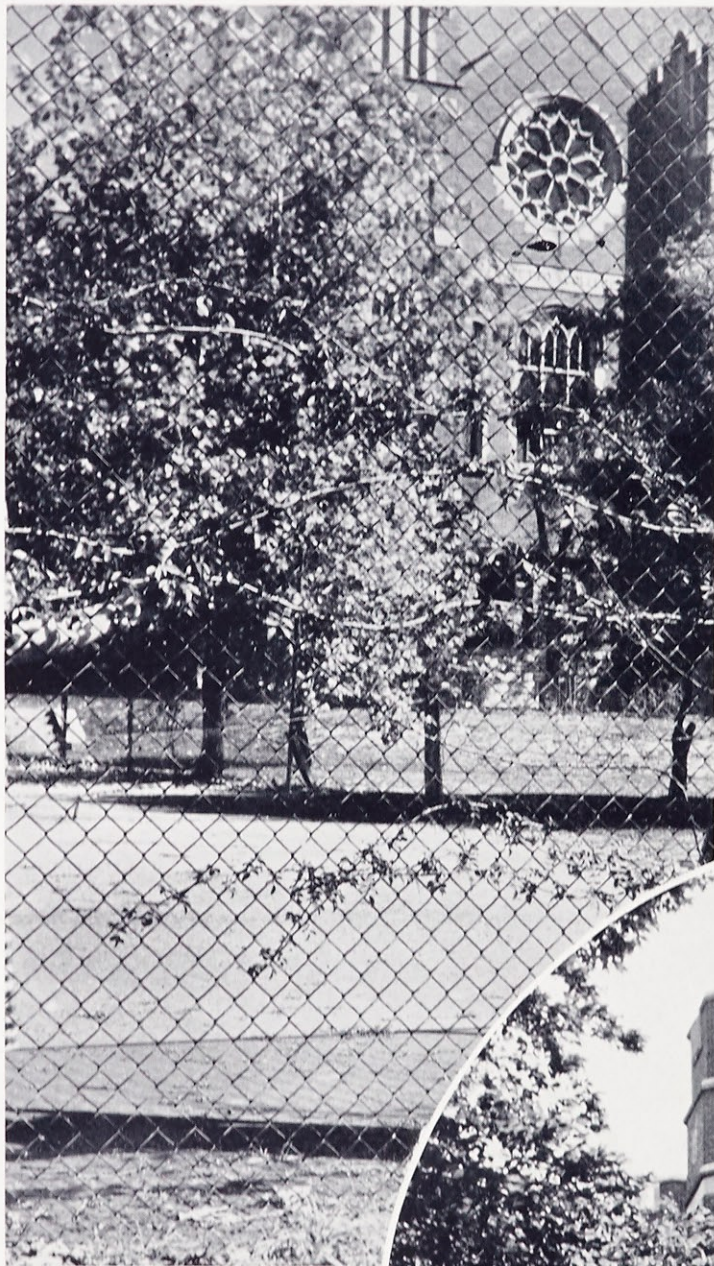
We present the Laetanus for Nineteen Hundred Thirty-Nine. May you find within its pages all your aims and achievements, and through it may you live over and over again your college days at Webster. May it be a memory book you will cherish always.





ONE DEAR to

Our Hearts



Sister Frances Marie, to whom we dedicate this Nineteen Hundred Thirty-nine Lauretanum.

Sister Frances Marie, as Dean of Women, has been a counsellor, friend and guide to Webster students who have come under her influence. She has been untiring in her efforts to promote our interests and happiness. In loving gratitude then, we offer her this token of our loyalty and friendship.



OUR BOOK

Divided into Four Parts

PART ONE

Hours of Study

PART TWO

The Social Picture

PART THREE

Organized Interests

PART FOUR

Fair Play and Teamwork



The L A U R E T A N U M *for*



Along the driveway,
when classes are over.



N I N E T E E N *Hundred* T H I R T Y - N I N E

OFFICERS OF
Administration

GEORGE FRANCIS DONOVAN, A. M., Ph. D.
President

MOTHER M. RICARDA BLINCOE, A. B.
Regent

SISTER LILLIAN CLARE REED, A. B.
Dean

SISTER FRANCES MARIE WALSH, A. M.
Dean of Women

SISTER M. BORROMEO HYNES, A. M.
Registrar

SISTER TERESA AGNES TIERNEY
Treasurer

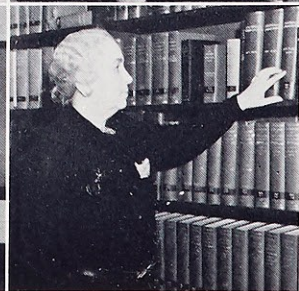
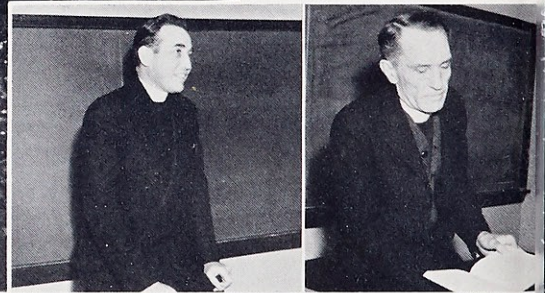


Webster's President

DR. GEORGE FRANCIS DONOVAN



The L A U R E T A N U M *for*



N I N E T E E N *Hundred* T H I R T Y - N I N E

Faculty

TOP ROW

Rev. Charles F. Convery

Rev. Louis F. Doyle

Rev. George C. Tolman

Rev. Martin J. O'Malley

Rev. Russell J. Kirschenheuter

Rev. John J. Battle

CENTER ROW

Charlotte M. Morehead

Rev. Leo P. Foley

C. C. Clayton

Mrs. Victor T. Allen

Patrick W. Gainer

Kathryn E. Larsen

Louis E. James

BOTTOM ROW

Christian Bonnet

Mrs. Anna McClain Sankey

Mary Alma Fregeau

Helen Reny Reichelt

Mary E. Killian

Nelson J. Wade

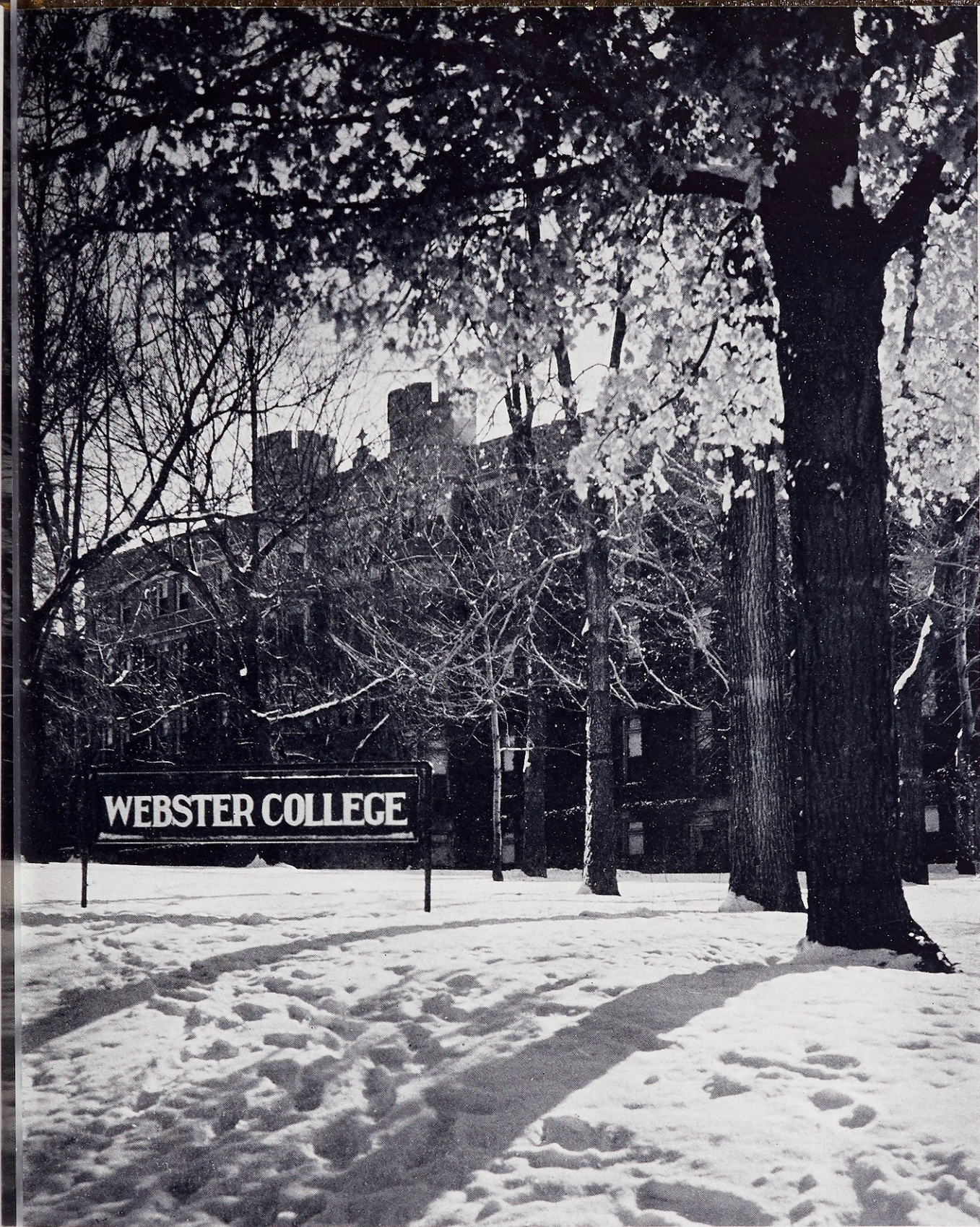
Agnes Vollmuth



The L A U R E T A N U M for

Faculty

- REV. JOHN J. BATTLE, C.M., A.M.
Professor of Religion
- REV. CHARLES F. CONVERY, C.M., S.T.D.
Professor of Philosophy
- REV. LOUIS F. DOYLE, S.J., A.M., Ph.D.
Associate Professor of English and Acting Director of the Department
- REV. LEO P. FOLEY, C.M., S.T.D.
Professor of Philosophy and Director of the Department
- REV. RUSSELL J. KIRSCHENHEUTER, C.M., A.M.
Professor of Scripture
- REV. MARTIN J. O'MALLEY, C.M., S.T.D.
Professor of History
- REV. GEORGE C. TOLMAN, C.M., A.M.
Professor of Religion
- MRS. VICTOR T. ALLEN, A.M.
Instructor in English
- CHRISTIAN BONNET, LL.M.
Instructor in French
- C. C. CLAYTON, B.J.
Instructor in Journalism
- GEORGE F. DONOVAN, A.M., Ph.D.
Professor of History and Director of the Department
- MARY ALMA FREGEAU, A.M.
Instructor in English
- PATRICK WARD GAINER, A.M., Ph.D.
Assistant Professor of English
- LOUIS E. JAMES, A.M.
Assistant Professor of Physics
- MARY E. KILLIAN, A.M.
Instructor in Dietetics
- FREDERICK W. LAIRD, M.S., Ph.D.
Instructor in Physics and Acting Director of the Department
- KATHRYN E. LARSEN, A.B.
Instructor in Physical Education
- CHARLOTTE M. MOREHEAD, A.M.
Instructor in Speech and Education
- HELEN RENY REICHEL, A.B.
Instructor in German; Librarian
- MRS. ANNA McCLAIN SANKEY, A.B.
Instructor in Dramatic Art
- NELSON JOHN WADE, M.S., Ph.D.
Instructor in Biology and Acting Director of the Department
- AGNES VOLLMUTH, R.N.
Director of Student Health Service



Winter at Webster

N I N E T E E N *Hundred* T H I R T Y - N I N E

The L A U R E T A N U M *for*

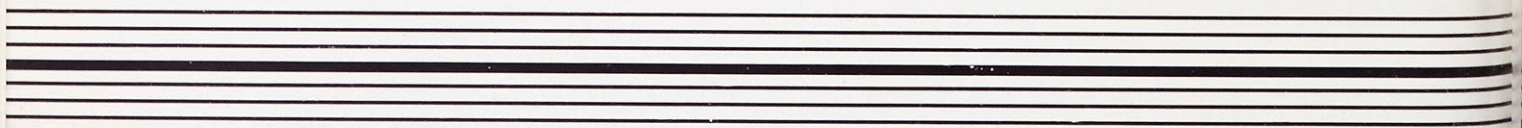
Faculty

- SISTER MARY LEON ALBIN, A.M.
Instructor in Education and Community Supervisor of Elementary Schools
- SISTER MARY PAULA CARETTO, B.M.
Instructor in Voice
- SISTER MARY BORGIA CLARKE, A.M., Cand. Ph.D.
Professor of Mathematics and Director of the Department
- SISTER MARY HARRIET CONDON, A.M.
Instructor in Biology
- SISTER MARY EDMOND FERN, A.M., Ph.D.
Professor of Classical Languages and Director of the Department
- SISTER GERMAINE FOGARTY, B.S.
Instructor in Mathematics and Physics
- SISTER ISABELLE MARIE FOLEY, A.M.
Instructor in Latin
- SISTER MARY ADALINE GEMOETS, Mus.M.
Professor of Theory of Music and Director of the Conservatory
- SISTER MARY ROBERTA HARDESTY, A.M.
Professor of French
- SISTER MARY ALPHONSINE HENSEN, B.M.
Instructor in Organ
- SISTER MARY JOECILE HUNLETH, B.M.
Assistant in Conservatory, Violin
- SISTER M. BORROMEO HYNES, A.M.
Instructor in Education
- SISTER MARY DOLORINE MORRISSON, A.M., Ph.D.
Professor of Speech and Director of the Department
- SISTER MARY ETHELBERT OWENS, A.M.
Instructor in Spanish and Director of the Department of Modern Languages
- SISTER ANN ROSE REID, A.B.
Instructor in English
- SISTER MARY ALONZA SMITH, M.S., Ph.D.
Instructor in Chemistry
- SISTER MARY AUBERT TENNELLY, A.M.
Instructor in History
- SISTER FRANCES MARIE WALSH, A.M.
Professor of Education
- SISTER ROSE VINCENT WANDER, B.S. in Mus.
Instructor in Music and Community Supervisor of Music, Elementary Schools



The Entrance to
the Administration Building
at Twilight

N I N E T E E N *Hundred* T H I R T Y - N I N E



The L A U R E T A N U M *for*



Rosemary Anne Boehm

St. Louis, Missouri

Bachelor of Arts

ROSEMARY BOEHM was May Queen in 1938. In 1937 she was a member of the Loretine staff, and for four years has been an active member of the Loretto Players. She took part in the Vodvil in 1936, '37, and '39, and since 1936 has been a member of the Sodality and of the C. S. M. C. She is graduated with a Bachelor of Arts degree in Speech and English.



N I N E T E E N *Hundred* T H I R T Y - N I N E

Agnes Borgel

St. Louis, Missouri

Bachelor of Science



AGNES BORGEL receives the degree of Bachelor of Science in Mathematics and Education. In 1939 she was Business Manager of the *Lorette*, and for two years, 1938 and '39, was Class Vice-President. She was a member of the Sodality, of the C. S. M. C., and of the Athletic Association for four years, as well as a member of the Spanish Club in 1936 and '37, of the Press Club in 1937, and of the Mathematics-Physics Club in 1937, '38, and '39, serving as Secretary-Treasurer of the latter organization in 1938. In 1936 and '37 she took part in the Vodvil.



The L A U R E T A N U M *for*



Helen Louise Buckley

Macon, Missouri
Bachelor of Philosophy

HELEN BUCKLEY receives the degree of Bachelor of Philosophy in English and Speech. She was a member of the Student Government Board in 1938 and '39, and served as Vice-President of the Association in her junior year. She was Hall President in 1939. In 1938 she was Secretary of the Athletic Association, having been a member since 1936. She participated in the Vodvil for four years, and in 1939 was appointed its Business Manager. She was a member of the Sodality and of the C. S. M. C. from 1936 to 1939, of the Loretto Players for the past two years, of Le Cercle Francais in 1936 and '37, and of the Press Club in 1936. In 1936 she played on the Class Baseball team, and in 1936, '37, and '38 on the Class Basketball and Volleyball teams. She was Personnel Chairman in 1938. This year she appeared in the Who's Who of American Colleges and Universities.



N I N E T E E N *Hundred* T H I R T Y - N I N E

Mary Jane Byrne

St. Louis, Missouri

Bachelor of Arts



MARY JANE BYRNE, who receives the degree of Bachelor of Arts in French and English, was a member of the Sodality, of the C. S. M. C., and of the Athletic Association for four years. She became a member of the Classical Club in 1937, and was a member of the Choral Club and of Le Cercle Francais in 1937, '38, and '39. In 1939 she served on the Mission Board. She played on the Class Basketball and Volleyball teams in 1936, '37, and '38.



The L A U R E T A N U M *for*



Martha Cantalin

St. Louis, Missouri

Bachelor of Science

MARTHA CANTALIN, Vice-President of the Co-operative Association in 1938, was elected President in 1939. She was Secretary of the Chemistry-Biology Club in 1938 and President in 1939, having been a member of this organization the two previous years. She was a member of the Sodality, of the C. S. M. C., and of the Athletic Association for four years, and of Le Cercle Francais in 1936 and '37. The degree of Bachelor of Science in Chemistry and Dietetics is conferred upon her.



Mary Virginia Casey

Breese, Illinois
Bachelor of Philosophy



MARY VIRGINIA CASEY is graduated with a Bachelor of Philosophy degree in English and History. She was a member of the Web staff in 1939, served as Art Editor of the *Loretine* in 1939, and as Vodvil Artist for four years, taking part in the Vodvil in 1939. From 1936 to 1939 she was a member of the Sodality, of the C. S. M. C., and of the Athletic Association, and played on the Class Basketball, Baseball, and Volleyball teams, serving as Captain of the latter team in 1937 and '38. For four years she was a member of the Track team and in 1938 was on the Varsity Baseball team. She was a member of the Chemistry-Biology Club in 1936, of *Le Cercle Francais* from 1936 to 1938, of the Short Story Club in 1938, and Secretary of the Poetry Club in 1938. In 1939 she was Vice-President of both the International Relations and the Photography Clubs, of which organizations she had also been a member in 1938. She served on the Publicity Committee for four years and on the Hall Committee in 1939.



The L A U R E T A N U M *for*



Jean Crowley
St. Louis, Missouri
Bachelor of Science

JEAN CROWLEY, after two years at Webster, spent her junior year at the University of California, and then returned here to be graduated with the degree of Bachelor of Science in Chemistry and Biology. In 1936, '37, and '39 she was a member of the Sodality, of the C. S. M. C., of Le Cercle Francais, and of the Chemistry-Biology Club. She was on the Library Staff in 1937.



Marcella Dailey

Eureka, Missouri
Bachelor of Philosophy



MARCELLA DAILEY, who receives the degree of Bachelor of Philosophy in English and Spanish, has for four years been a member of the Sodality, of the C. S. M. C., and of the Athletic Association. In 1938 she was a May Day Maid. She took part in the Vodvil in 1938 and '39, was a member of the Chemistry-Biology Club in 1936, and of the Spanish Club in 1936, '37, and '38. Since her freshman year she has been on the Varsity Baseball team; in 1936 and '37 she was on the Track and the Class Volleyball teams, and in 1936, '37, and '38, on the Class Basketball team. This year she has been a member of the Hall Committee.



The L A U R E T A N U M *for*



Helen Day

Hamburg, Illinois
Bachelor of Philosophy

HELEN DAY, a member of the Web staff and of the Hall Committee in 1939, has been a member of the Sodality, of the C. S. M. C., and of the Athletic Association since 1936. In 1936 and '37 she was a member of Le Cercle Francais and of the Choral Club, in 1937 of the Press Club, in 1938 of the Poetry Club, and in 1939 of the Photography Club. She took part in the Vodvil in 1937 and '39. The degree of Bachelor of Philosophy in English and History is conferred upon her.



Mary Elizabeth Flynn

St. Louis, Missouri

Bachelor of Arts



MARY ELIZABETH FLYNN, who receives a Bachelor of Arts degree in English and French, was a member of both the Web and Loretine staffs in 1939. She has participated in the Sodality, the C. S. M. C., and the Athletic Association, and has also been a member of Le Cercle Francais since her freshman year, serving as Secretary of the latter organization in 1937. In 1937 she took part in the Vodvil.



The L A U R E T A N U M *for*



Jean Gillespie
Kirkwood, Missouri
Bachelor of Arts

JEAN GILLESPIE was President of her class for two consecutive years, 1938 and '39. A member of the Student Government Board for the past two years, she was elected Secretary of the Association in 1939. Since 1936 she has been a member of the Sodality and of the C. S. M. C., and in 1939 was on the Students' Spiritual Council. She was a member of Le Cercle Francais in 1937, of the Short Story Club in 1938, and also in 1938 of the Web staff. In 1937, '38, and '39 she took part in the Vodvil. She was on the Class Volleyball team in 1938, the Class Baseball team in 1937 and '38, and for four years was a member of the Athletic Association. In 1939 she was a May Day Maid. She is graduated with the degree of Bachelor of Arts in English and History.



Dorothy Henderson

Webster Groves, Missouri
Bachelor of Philosophy



DOROTHY HENDERSON, Treasurer of her class, Circulation Manager of the *Lauretanum*, and a staff member of the *Web* in 1938, was Business Manager of the paper in 1939. Since 1936 she has been a member of the Sodality, of the C. S. M. C., of the Athletic Association, and of *Le Cercle Francais*, and in 1936 and '37 was a member of the Choral Club. An active member of the *Loretto Players* for the past three years, she served as Vice-President of that organization in 1938 and as President in 1939. She took part in the *Vodvil* for four years and was on its production staff in 1939. This year she was a *May Day Maid*. She receives the degree of Bachelor of Philosophy in Speech and French.



The L A U R E T A N U M *for*



Florence Loretto Herre

St. Louis, Missouri
Bachelor of Science

FLORENCE HERRE is graduated with the degree of Bachelor of Science in Chemistry and Mathematics. She was a member of the Sodality and of the C. S. M. C. for four years. She served on the Mission Board in 1937 and '38, and on the Students' Spiritual Council in 1939. She was President of the Mathematics-Physics Club and Secretary-Treasurer of the Chemistry-Biology Club in 1939, having been a member of both of these clubs since 1936. Assistant Manager of the Co-operative Association in 1937, she served as Vice-President in 1938, and Manager in 1939. She became a member of Le Cercle Francais in 1937, of the Photography Club in 1939, and took part in the Vodvil in 1939. She has been a member of the Athletic Association since 1936.



N I N E T E E N *Hundred* T H I R T Y - N I N E

Isabel Hoban

East St. Louis, Illinois
Bachelor of Philosophy



ISABEL HOBAN, a staff member of the Web in 1938 and '39, and of the Lorette for the past year, was also a member of the International Relations Club in 1937 and '38, serving as Treasurer of the organization in 1939. She has been a member of the Sodality, of the C. S. M. C., of the Athletic Association, and of the Spanish Club for four years, and is graduated with a Bachelor of Philosophy degree in History and English.



The L A U R E T A N U M *for*



Genevieve Hogan

St. Louis, Missouri
Bachelor of Philosophy

GENEVIEVE HOGAN, a member of the Lorette staff in 1939, was a member of the Sodality and of Le Cercle Francais from 1936 to 1939, of the Choral Club in 1936 and '37, and of the Poetry Club in 1937 and '38. The degree of Bachelor of Philosophy in French and English is conferred upon her.



Regina Marie Madden

St. Louis, Missouri

Bachelor of Arts



REGINA MADDEN, who receives the degree of Bachelor of Arts in History and Education, was a member of both the Classical and Spanish Clubs in 1936 and '37, and of the Choral and International Relations Clubs in 1937. She has belonged to the Sodality and to the C. S. M. C. since 1936, and was a member of the Class Volleyball team in 1936, '37, and '38, and of the Class Baseball team in 1937 and '38. She was Sodality May Day Maid in 1938. She also took part in the Vodvil in 1938, and was Treasurer of her class in 1939.



The L A U R E T A N U M *for*



Florence Martinek

St. Louis, Missouri

Bachelor of Science

FLORENCE MARTINEK, an active member of the Sodality for four years, was Secretary of the organization in 1938 and Prefect in 1939. She served on the Students' Spiritual Council for the past three years, on the Student Government Board for the past two years, and was Treasurer of the Student Government Association in 1938. She was a member of the C. S. M. C., of the Chemistry-Biology Club, of the Athletic Association, and of the Orchestra from 1936 to 1939, of Le Cercle Francais in 1936 and '37, and took part in the Vodvil in 1938. In 1939 she appeared in the Who's Who of American Colleges and Universities. She receives the degree of Bachelor of Science in Chemistry and Dietetics.



N I N E T E E N *Hundred* T H I R T Y - N I N E

Jane McFarland

St. Louis, Missouri

Bachelor of Science



JANE McFARLAND, who receives a Bachelor of Science degree in Chemistry and Dietetics, was a member of the Sodality, of the C. S. M. C., and of the Chemistry-Biology Club for four years, and of Le Cercle Francais from 1936 to 1938, serving as Treasurer in 1938. She was on both the Class Baseball and Volleyball teams in 1937, was Patron Manager of the Lauretanum in 1938, and Secretary of her class in 1939.



The L A U R E T A N U M *for*



Dorothy McGillen

Chicago, Illinois

Bachelor of Philosophy

DOROTHY MCGILLEN, a member of the Athletic Association for four years, was Vice-President of the organization in 1938 and President in 1939. A member of the Varsity Basketball team in 1937 and '39, and of the Volleyball team in 1938, she also played on the Class Basketball, Volleyball and Baseball teams since 1936. She belonged to the Sodality from 1936 to 1939, to the International Relations Club in 1938, was Treasurer of the Spanish Club in 1937, and took part in the Vodvil for the past three years. She is graduated with the degree of Bachelor of Philosophy in History and Physical Education.



Eleanor Merkel

St. Louis, Missouri

Bachelor of Arts



ELEANOR MERKEL was Editor of the *Loretine* in 1939 and Associate Editor of the *Web* in 1938. A member of the Sodality and of the C. S. M. C. since 1936, she served on the Students' Spiritual Council in 1938 and '39, and was President of the C. S. M. C. this past year. In 1937 she was a Student Government Board Representative. A member of the Athletic Association for four years, of the Choral Club and of *Le Cercle Francais* for the past three years, she also belonged to the Classical Club in 1937, to the Photography Club in 1939, and to the Co-operative Association in 1938 and '39. She took part in the *Vodvil* in 1937 and '39, and this year was a *May Day Maid*. She is graduated with the degree of Bachelor of Arts in English and French.



The L A U R E T A N U M *for*



Victoria Mortland

Kirkwood, Missouri

Bachelor of Philosophy

VICTORIA MORTLAND, Editor of the *Lauretanum* in 1938, was Director of the *Vodvil* in 1939, having served as Assistant Director in 1938, and having taken part in the *Vodvil* productions since 1936. She was a *Web* columnist in 1939, and, in addition, was a member of the *Spanish Club* in 1936, of the *Poetry Club* in 1937 and '38, and of the *Athletic Association* from 1936 to 1939. In 1938 she was a *May Day Maid*, and in 1937 was *Personnel Director*. She has been an active member of the *Loretto Players* for four years, and this year appeared in the *Who's Who of American Colleges and Universities*. She receives the degree of *Bachelor of Philosophy* in *Speech and English*.



Kathleen O'Rourke

Webster Groves, Missouri
Bachelor of Philosophy



KATHLEEN O'ROURKE, who receives the degree of Bachelor of Philosophy in French and English, has been a member of the Sodality, of the C. S. M. C., of the Athletic Association, and of Le Cercle Francais for four years, and in 1938 and '39 was Vice-President of the latter organization. She was a May Day Maid in 1937, a staff member of the Loretine in 1939, and has taken part in the Vodvil for the last three years. She was Captain of the Class Basketball team in 1936, and played on this team and the Class Volleyball team in 1937 and '38, and on the Class Baseball team in 1938.



The L A U R E T A N U M *for*



Deanne Pauley
St. Louis, Missouri
Bachelor of Arts

DEANNE PAULEY, President of the Student Government Association in 1939, was Faculty Representative to the Student Government Board in 1938, and also in 1938 was Associate Editor of the *Lauretanum*. In 1939 she was Dance Director of the *Vodvil*, having been Assistant Director in 1937 and '38, and has taken part in the productions for four years. She was a May Day Maid and Assistant Personnel Director in 1937, a Web columnist in 1939, and a member of the Class Baseball team in 1938. In addition, she has been a member of *Le Cercle Francais* and of the Athletic Association since 1936, and an active member of the *Loretto Players* for the past two years. This year she appeared in the *Who's Who of American Colleges and Universities*, and is graduated with a Bachelor of Arts degree in French and Speech.



Doris Catherine Rogles

St. Louis, Missouri

Bachelor of Arts



DORIS ROGLES, who was Vice-Prefect of the Sodality in 1939, has been a member of the Sodality and of the C. S. M. C. for four years, and served on the Mission Board in 1936. Business Manager of the *Lauretanum* in 1938, she was also a member of the Mathematics-Physics Club for the past three years, serving as Vice-President in 1939. She belonged to *Le Cercle Francais* and to the Press Club in 1936, and was Secretary of the latter organization in 1937. A member of the Athletic Association from 1936 to 1939, she played on the Class Baseball team in 1936, on the Class Volleyball team in 1936 and '37, took part in the *Vodvil* in 1937 and '39, and was Vice-President of her class in 1937. She receives the degree of Bachelor of Arts in Mathematics and Education.



The L A U R E T A N U M *for*

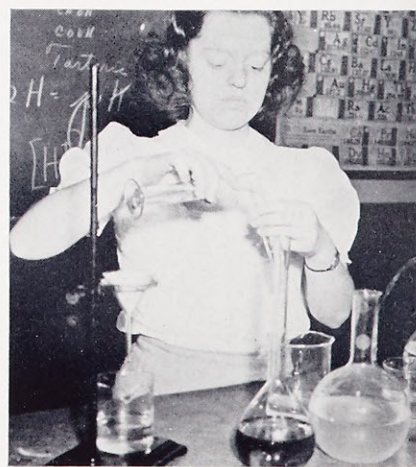


Bernice Schleicher

St. Louis, Missouri

Bachelor of Science

BERNICE SCHLEICHER, who is graduated with the degree of Bachelor of Science in Chemistry and Biology, was in 1939 a member of both the Students' Spiritual Council and the Student Government Board, and, in addition, was Circulating Manager of the Loretine, and one of the Board of Directors of the Co-operative Association. Class Secretary in 1938, a member of the C. S. M. C. in 1937 and '38, she has also been a member of the Sodality, Le Cercle Francais, the Orchestra, and the Chemistry-Biology Club for the past four years, and served as President of the latter club in 1938.



Evelyn Thornton

Clayton, Missouri

Bachelor of Arts



EVELYN THORNTON, Editor of the Web in 1939, was Assistant Editor in 1938, and a columnist in 1937. An active member of Le Cercle Francais for four years, she served as President in 1939, Secretary in 1938, and Treasurer in 1937. In addition, she was a member of the Athletic Association from 1936 to 1939, of the Classical Club in 1937 and '38, of the International Relations Club in 1938, of the Choral Club in 1936, and was Secretary of the Short Story Club in 1938. She played on the Class Baseball team from 1936 to 1938, took part in the Vodvil in 1936 and '38, and was on the Campus Guide Committee in 1939. She is graduated with the degree of Bachelor of Arts in English and French.



The L A U R E T A N U M for

NATALIE ALLISON
Treasurer
University City, Missouri

FLORENCE BAXTER
St. Louis, Missouri

MARJORIE BELT
Flora, Illinois

BETTY BONEAU
St. Louis, Missouri

ROSE BRADY
University City, Missouri

CECILIA CONREY
Monett, Missouri

LORETTA CORBETT
St. Louis, Missouri

PATRICIA COSTELLO
St. Louis, Missouri

MILDRED DANIELS
Santa Fe, New Mexico

VIRGINIA ANN DRISCOLL
El Paso, Texas

MARY GALBRAITH
Anniston, Alabama

DOROTHY GHIO
St. Louis, Missouri

MARY ELIZ. HOFFMEISTER
St. Louis, Missouri

MARY JANE HOULIHAN
Clayton, Missouri

MARY LOUISE HYDE
Secretary
St. Louis, Missouri

ROBERTA IRWIN
Summitville, Ohio

MARY COURTNEY JONES
Clanton, Alabama

MARY LORETTO KEGRIS
Warren, Arizona

ANNA BETH KELLY
Chicago, Illinois

MARY F. KNOEDELSEDER
St. Louis, Missouri

MARY MARGARET KOENITZ
St. Louis, Missouri

VIRGINIA LEICHT
St. Louis, Missouri

GERALDINE MACAULEY
St. Louis, Missouri

DOROTHY MCKINLAY
Webster Groves, Missouri

BEATRICE PEREZ
Kirkwood, Missouri

MARY RITA PERKINSON
St. Louis, Missouri



A. Ritch, M. Peters, M. L. Hyde, N. Allison
F. L. Rothermich, M. J. Houlihan, B. Perez, L. Rummel
M. Galbraith, M. L. Kegriss, V. A. Driscoll, D. Ghio
C. Conrey, D. McKinlay, R. Brady, L. Corbett

MILDRED PETERS
Vice-President
Florissant, Missouri
ELIZABETH POLLMANN
St. Louis, Missouri
ANN RITCH
President
St. Louis, Missouri

JOSEPHINE RAFTERY
St. Louis, Missouri

MARY MARTHA RITTER
Louisville, Kentucky

FRANCES LOUISE ROTHERMICH
Ferguson, Missouri

N I N E T E E N *Hundred* T H I R T Y - N I N E

Juniors

B. Boneau, M. E. Hoffmeister, R. Irwin, V. Leicht, M. Daniels
 M. Ware, A. B. Kelly, F. Baxter, J. Rattery, M. Schlingmann
 M. F. Knoedelseder, P. Costello, M. M. Ritter, M. M. Koenitz, M. R. Perkinson
 G. Maccauley, E. Pollmann, M. Belt, M. C. Jones



LUCILLE RUMMEL
 Kirkwood, Missouri

MELANIE SCHLINGMANN
 St. Louis, Missouri

MARION WARE
 St. Louis, Missouri

The LAURETANUM for



J. Raymond, J. Hyde, V. Riehemann, E. Reid
 C. Allhoff, G. Meder, P. Quick, D. Ottens
 B. Hellinghausen, M. J. McAuliffe, A. M. Devine, E. Yock

CECILIA ALLHOFF
 St. Louis, Missouri

BETSY CASEY
 University City, Missouri

DOROTHY DEPOSKI
 St. Louis, Missouri

ANNA MARIE DEVINE
 Sterling, Illinois

THELMA DUDENHOEFFER
 St. Louis, Missouri

ROSE MARIE FRICK
 Kansas City, Missouri

ELIZABETH FURI
 St. Louis, Missouri

EUGENIA HARTER
 St. Louis, Missouri

BETTY HELLINGHAUSEN
 Breckenridge, Texas

RITA MARIE HENTZEN
 Kansas City, Kansas

ANN HOF
 St. Louis, Missouri

BETTY HUFFMAN
 Caruthersville, Missouri

JANE HYDE
 Vice-President
 St. Louis, Missouri

CLARE JACOBMEYER
 Shrewsbury, Missouri

HELENE KNAPP
 St. Louis, Missouri

FRANCINE LARSON
 Evansville, Indiana

MARY JANE McAULIFFE
 St. Louis, Missouri

N I N E T E E N *Hundred* T H I R T Y - N I N E

Sophomores

M. L. Travers, R. M. Frick, R. M. Hentzen, H. Knapp, A. Hof
C. Jacobsmeyer, R. Suliburk, D. Deposki, A. Schwarze, B. Huffman
T. Dudenhoeffer, R. Rummelhart, E. Furi, B. Casey, F. Larson



GLORIA MEDER
Kirkwood, Missouri

DOROTHY OTTENS
St. Louis, Missouri

MARGARET QUICK
St. Louis, Missouri

JEAN RAYMOND
President
Kansas City, Missouri

EILEEN REID
Treasurer
St. Louis, Missouri

VIRGINIA RIEHEMANN
Secretary
St. Louis, Missouri

RUTH RUMMELHART
Colorado Springs, Colorado

ANTOINETTE SCHWARZE
St. Louis, Missouri

ANTOINETTE SEVIER
Miami, Florida

ROSEMARY SULIBURK
St. Louis, Missouri

MARY LU TRAVERS
University City, Missouri

ELIZABETH YOCK
Pekin, Illinois

The LAURETANUM for

EILEEN BACKER
St. Louis, Missouri

MARY ELIZABETH BAKER
St. Louis, Missouri

CECELIA BEINE
St. Louis, Missouri

MARY ELEANORE BRADY
University City, Missouri

CHARLOTTE BRAUN
Cape Girardeau, Missouri

ROSALIE BRENNAN
Webster Groves, Missouri

DOROTHY BULFIN
St. Louis, Missouri

BETTY BURKE
St. Louis, Missouri

MARY FRANCES BURKE
Pocahontas, Arkansas

CATHERINE CARROLL, Pres.
Webster Groves, Missouri

VIRGINIA CHAPMAN
St. Louis, Missouri

SALLY EDELEN
Bardstown, Kentucky

GEORGIA MAE ELL
St. Charles, Missouri

MARIE FINKE
St. Louis, Missouri

MARY LOUISE FITZGIBBON
University City, Missouri

RITA GAUVIN, Secretary
St. Louis, Missouri

MARY ANN GEWINNER
St. Louis, Missouri

MARY MARGARET GIBBONS
St. Louis, Missouri

ETHELDREDE GIRSE
St. Louis, Missouri

BARBARA GLEASON
Rolla, Missouri

JULIA ANN GOSEN
Webster Groves, Missouri

JULIANNE GRAFEMAN
St. Louis, Missouri

MARIAN GRANT
St. Louis, Missouri

MARY JANE GREENSLADE
Highland Park, Illinois

YVONNE HAYES
Boonville, Missouri

MARY B. HELD
St. Louis, Missouri

BETTY JOHNSON
New Haven, Kentucky

JUNE KAVANAUGH
Webster Groves, Missouri



C. Carroll, J. Morris, R. Gauvin, M. J. Nolan, M. Kientzy, J. Kavanaugh
H. Phelan, M. C. Phelan, R. F. Wynn, M. Finke, A. O'Donnell, V. Tessmer
S. Welch, C. O'Regan, M. Ward, M. J. Greenslade, E. Backer, M. A. Gewinner
S. Edelen, M. Grant, M. A. Kilkenny, D. Bulfin, C. Beine, A. A. Nusz
B. Johnson, C. Hogan, H. Ritter, M. M. Gibbons, L. Knese, M. B. Held

MARIE KIENTZY
Elsberry, Missouri

MARY ADELINE KILKENNY
Santa Fe, New Mexico

LORRAINE KNESE
St. Louis, Missouri

LORRAINE MAHER
Normandy, Missouri

ALICE MATTHEWS
St. Louis, Missouri

MARY LOUISE McFADDEN
Mt. Carmel, Pennsylvania

JANE MORRIS, Vice-Pres.
Webster Groves, Missouri

JANE NACHTMANN
Webster Groves, Missouri

MARIE ELINOR NEVILLE
Maplewood, Missouri

MARY JANE NOLAN, Treas.
Denver, Colorado

ALICE ANN NUSZ
Cecilia, Kentucky

KATHRYN NUTTLI
St. Louis, Missouri

ANN O'DONNELL
Webster Groves, Missouri

CATHERINE O'REGAN
St. Louis, Missouri

HELEN PHELAN
Pacific, Missouri

MARY CATHERINE PHELAN
St. Louis, Missouri

DOLORES RAKERS
St. Louis, Missouri

HELEN RITTER
Louisville, Kentucky

MILDRED ROST
Jefferson City, Missouri

MARIAN SCHMIDBAUER
St. Louis, Missouri

N I N E T E E N *Hundred* T H I R T Y - N I N E

Freshmen

M. Rost, J. Welch, M. E. Sullivan, M. Neville, B. Burke, L. Maher
 M. E. Brady, V. Chapman, D. M. Timmerberg, M. F. Burke, M. Schmidbauer, D. Rakers
 E. Girse, J. A. Gosen, M. L. McFadden, K. Nuttli, R. Brennan, M. E. Baker
 Y. Hayes, L. Walsh, M. Vierheller, M. L. Fitzgibbon, G. M. Ell, C. Braun
 A. Mathews, H. Thurmond, B. Gleason, J. Nachtmann, A. Thomas



MARY ELLEN SULLIVAN
 Grand Tower, Illinois
 VICTORIA TESSMER
 St. Louis, Missouri
 ALICE THOMAS
 St. Louis, Missouri

HELEN THURMOND
 Clayton, Missouri
 DORIS TIMMERBERG
 St. Louis, Missouri
 MARIAN VIERHELLER
 St. Louis, Missouri

LORRAINE WALSH
 St. Louis, Missouri
 MARGARET WARD
 St. Louis, Missouri
 JOAN WELCH
 Indianapolis, Indiana

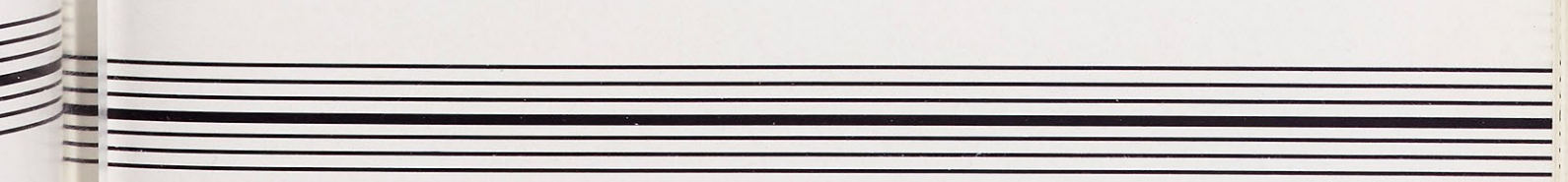
SYLVA JANE WELCH
 St. Louis, Missouri
 RUTH FRANCES WYNN
 Maplewood, Missouri
 CECELIA HOGAN, Special
 St. Louis, Missouri



PART TWO— THE SOCIAL PICTURE

For all the seriousness of classroom and study, Webster's campus is still our biggest playground. Across our social picture flows a stream of parties, banquets, teas, May Days, and countless informal and costume affairs given by the classes, the Big and Little Sisters, and the various organizations. Webster, realizing that social life is as much a part of education as the hours spent in the classroom, offers her girls through these activities endless opportunities for developing wider interests and experiences.

From September until June we plan these affairs and eagerly await their arrival, each one so entirely different, each one so characteristic of Webster—her spirit and her girls.



Loretto Players



Top row—Mr. Harry R. McClain, Director; M. M. Koenitz, M. J. Houlihan, M. L. Travers,
F. L. Rothermich, V. Mortland, J. Rafferty, B. Perez, M. Belt
Second row—R. Boehm, H. Buckley, R. Suliburk, D. Pauley
Third row—D. Henderson



Officers confer on future dramatic presentations

OFFICERS

Dorothy Henderson - - President
Marjorie Belt - - - Vice-President
Mary Jane Houlihan - Secy.-Treas.

The end of the school year, 1938-39, and the Loretto Players have rounded out their twenty-first year of dramatic work. During this period the Players, under the direction of Mrs. Anna McClain Sankey, have produced in the Little Theatre an innumerable variety of plays. Greek tragedies, Shakespearean comedies and tragedies, modern and classical pieces, one-act plays—all these have been given at one time or another. Webster has become famous for its dramatic department, and it is interesting to note that the management and actual production of the plays rests entirely

Loretto Players

in the hands of the Loretto Players themselves.

The first presentation of the Senior Dramatic Group this year was a revival of *Cradle Song*, by Jose Martinez Sierra. The *Cradle Song* was brought back by popular demand, and it repeated the success of its former presentations. Next followed a program of one-act plays by the Junior Group, made up of first year Dramatic students. And then came the biggest production of all, the Shakespearean play. This year, it was that great tragedy which appeared for the third time in the history of the Loretto Players, *Romeo and Juliet*.

It was while *Romeo and Juliet* was in rehearsal that an idea was conceived to celebrate annually, if possible, the birthday of that immortal poet of the English tongue, William Shakespeare. On April the twenty-third, therefore, a celebration was held in Tower Grove Park before the statue of the Elizabethan Playwright under the auspices of the Loretto Players. The purpose was to pay homage to the "poet-player" on his birthday. Representatives from various St. Louis Theater groups interested in Shakespeare were present for a celebration which it is hoped will become a tradition among the Players.



Mr. McClain demonstrating the art of make-up to the Junior Dramatic Class

Vodvil

This year saw the Webster College girls on their annual Vodvil tour in **Innocents Abroad**. Their plans completed and their luggage packed, they left the College by private chartered plane and dropped in on the different countries of Europe as their fancy swayed them.

They were privileged in hearing one of the noted choirs of Scotland and in seeing a group of pretty Irish maids a-milking. Spain, Austria, Arabia, and Russia showed the Websterites their native dances, and Il Duce graciously addressed them during their stay in Italy. France gave the girls many of their advanced ideas on Spring fashions, while England instructed them on the manners and habits of a girls' institution. So Webster saw Europe, and Europe saw Webster. Both were duly impressed.

No truer words were spoken than those of the Stewardess of the Airline—"Europe thinks it has a lot of trouble now, but wait until THEY get over there."

Webster's debt of gratitude grows larger year by year as Father Lord graciously and generously gives his time to make the Vodvil a yearly success.



Top picture—Father Lord, to whom Webster owes the success of her Vodvils; Tory Mortland, our capable director

Second picture from top—Deanne Pauley, Dance Director; Mary Jane Houlihan, Program and Ticket Chairman; Helen Buckley, Business Manager

Small picture, left—After a workout

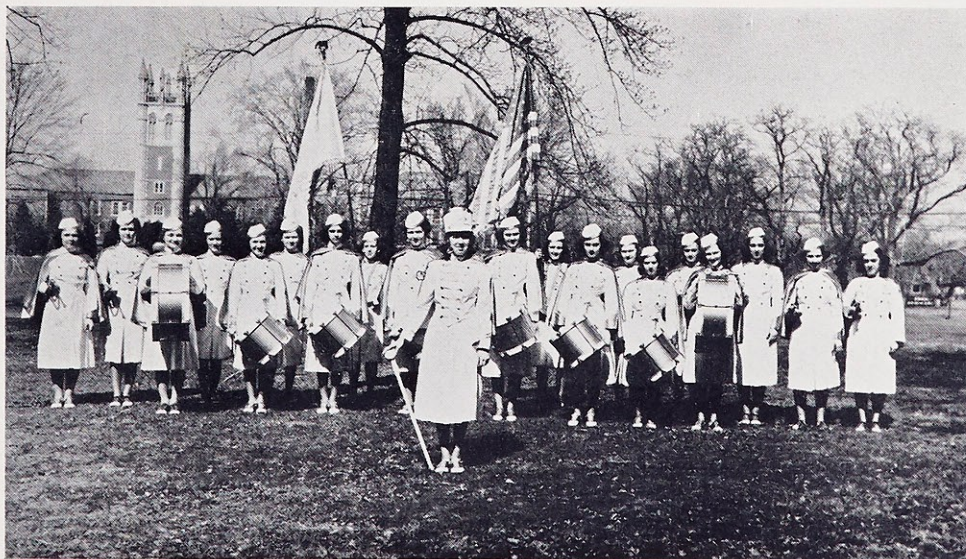
Small picture, right—Novena-ing between scenes

Lower picture—The scene of real Vodvil drama

Drum and Bugle Corps

To the rhythm of the drums, the blare of the trumpets, and the whirl of the baton, Webster marches ahead with another outstanding extra-curricular activity—the Drum and Bugle Corps. Although organized only last year, the Corps has responded admirably and has lent pep and snap to every performance. This year it first appeared at the Maryville-Webster basketball game, where Drum Major Pat Costello led the Corps through its effective drills and formations, bringing pride and delight to the already enthusiastic crowd. But its most important performance was on May the ninth, at the elevation of the American flag on the Webster College campus, when the Corps augmented the solemnity and dignity of the occasion.

The aim of this group is to perform at important athletic activities, to represent Webster College in the Memorial Day parade, and to greet dignitaries visiting the College. For this reason Webster is particularly proud of her Corps, and hails it as one of her finest examples of school spirit.



H. Knapp, R. F. Wynn, F. L. Rothermich, V. Leicht, M. E. Hoffmeister
V. Riehemann, M. Peters, J. Grafeman, D. Rakers, P. Costello, Drum Major
L. Knese, M. F. Knoedelseder, M. Schmidbauer, M. J. Houlihan, D. Ghio
P. Quick, L. Corbett, B. Burke, R. Brennan, B. Perez

Formal Dinner

January the twenty-sixth marked the highlight of Webster's social season, for on that night the first Formal Dinner, sponsored by the Woman's Club, was held at the Missouri Athletic Association.

Out of mid-year hibernation, the exams having been weathered more or less successfully, Websterites were again their sparkling selves, and judging from the tone of their reminiscences, they heartily vote for more formal dinners and fewer exams.

Another outstanding social event was the Christmas Banquet at which the lay faculty and students were the guests of Mother Ricarda and the Junior Class. Traditional at this banquet is the presentation to the Seniors of their class pins by Dr. Donovan, which took place after the dinner in the College Cafeteria.

The guests then adjourned to the Pink Room to await the arrival of that time-honored Gentleman from the North Pole. To their amazement a streamlined Santa Claus clad in white aviation togs swooped upon the modernistically decorated room, and with the aid of his air stewards, distributed from his luggage gifts for the faculty and the Freshmen. Entertainment followed to climax the evening and send us away in true holiday spirit.



The Formal Dinner

May Day

Climaxing Webster's social activities is the beautiful and long-anticipated May Day. Last year on the afternoon of May the twenty-eighth, the sound of the herald's trumpet silenced the throng of eager spectators and announced the arrival of the Acting Retiring Queen, Ruth Savage. When she had reached the throne, the procession of the maids followed immediately—Jean Henning, Peggy Chamberlain and Melba Godar, representing the Senior Class; Tory Mortland and Marcella Dailey, the Junior Class; Pat Higgins and Mary Elizabeth Hoffmeister, the Sophomore Class; and Ruth Rummelhart, the Freshman Class. The Senior Class, carrying the traditional Daisy Chain, formed the guard of honor along the pathway to the throne.

The trumpet sounded again, and this time the herald proclaimed the Queen of the Court of Love and Beauty, Her Majesty, Miss Rosemary Boehm, a member of the Junior Class. A picture of loveliness, the new Queen gracefully approached the throne where she was crowned with a garland of flowers.

Entertainment for the Queen and her Court followed, with the May Pole Dance by the Freshmen, a solo by Deanne Pauley, an old-fashioned ballet by Pat Costello and Eileen Reid, and a trio by Jean Raymond, Rosemary Suliburk and Barbara Biederman. As the shadows were lengthening across the throne, the Queen and her Court retired, and another beautiful May Day was added to the memoirs of the Webster girl.



The Queen and Her Court

The L A U R E T A N U M for

Web



H. Day, M. R. Perkinson, D. Henderson, J. Raymond, Miss Fregeau, Moderator; M. Dailey, E. Thornton



Business Manager and Editor checking accounts

STAFF

- Evelyn Thornton - - - - Editor
- Mary Rita Perkinson - Asst. Editor
- Dorothy Henderson
Business Mgr., 1st Sem.
- Mary Elizabeth Hoffmeister
Business Mgr., 2nd Sem.
- Marcella Dailey } - Associate Editors
- Helen Day } - Associate Editors
- Jean Raymond - Circulation Mgr.
- Florence Baxter - - - - Athletics

The WEB, a five-column, four-page, semi-monthly publication, celebrated its nineteenth birthday this year. The WEB is a member of the Catholic School Press Association, from which organization it has received All-Catholic Honor Awards for the past few years.

The WEB was founded and has been continued in the hope that it would afford opportunity for supplementary work in English; that it would be a training ground for aspiring journalists; and that it would be a means of communicating school activities to all those interested in Webster College. At the present time seventy or more Catholic Colleges throughout the country are on the WEB Exchange List.

This is the second year that the WEB has been streamlined. When this kind of makeup was adopted last year, streamlining was still comparatively rare in college publications, but today it is gradually becoming general.

Loretine



B. Schleicher, A. Borgel, M. V. Casey, E. Merkel, Miss Fregeau, Moderator

The LORETTINE, our literary quarterly, does not attempt to weigh the ponderous and difficult problems of the world, but instead, endeavors to crystallize the students' opinions and beliefs in matters spiritual and practical, and to provide a means of publishing their creative work.

The first issue of the magazine, the ALUMNAE ISSUE, was edited by Mary Carroll, '35, and featured contributions by various graduates. Subsequent Home issues contained essays, short stories, articles, and poetry by the students.

The March number was dedicated to the late Reverend Francis V. Corcoran, C. M., former teacher at Webster College. A special contributor to this issue was the Reverend J. P. Donovan, C. M., who eulogized his lifelong confrère, Father Corcoran.

STAFF

- Eleanor Merkel - - - - - Editor
- Agnes Borgel - - - Business Mgr.
- Mary Virginia Casey - Art Editor
- Bernice Schleicher - Circulation Mgr.
- Genevieve Hogan }
Isabel Hoban } - Reporters
Mary Elizabeth Flynn }
Kathleen O'Rourke }
Rosemary Boehm }



Business Manager and Editor preparing copy

Lauretanum



M. Belt, M. M. Koenitz, E. Pollmann, M. J. Houlihan, M. F. Knoedelseder, P. Costello



Business Manager and Editor reviewing pictures

STAFF

Mary Frances Knoedelseder - Editor

Pat Costello - - - - Asst. Editor

Mary Jane Houlihan - Business Mgr.

Mary Margaret Koenitz - Adv. Mgr.

Elizabeth Pollmann - - Cir. Mgr.

Marjorie Belt - - - - Art Editor

A crystallization in pictures of the year's activities has been our aim in the publication of this LAURETANUM. Since last summer when we began to plan the book, the idea has ever been foremost in our minds to capture in these many and informal pictures that spirit which characterizes Webster College and makes it so beloved to our hearts. As the year progressed and our dreams and plans became realized, the hours of real work passed as never-to-be-forgotten hours of pleasure and enjoyment.

Now, on May the twenty-third, we, the Staff, present to you your Yearbook, hoping that our purpose has been accomplished. May you cherish this book as a record of your life at Webster, 1938-1939.

Co-operative Association

The Co-operative Association was started in the fall of 1936 under the direction of Father George McDonald, S. J., of the Queen's Work. After spending considerable time studying the underlying principles of the Consumers' Co-operative, the students decided to open a store in Loretto Hall. Now the "Co-op" Store has been in operation since February, 1937, and both boarders and day students take advantage of the opportunities it offers.

This project is really one of great value because of its ultimate effects. In supporting an organization of this type the students are fostering an enterprise based on Christian principles of business, and at the same time are deriving a profit themselves.

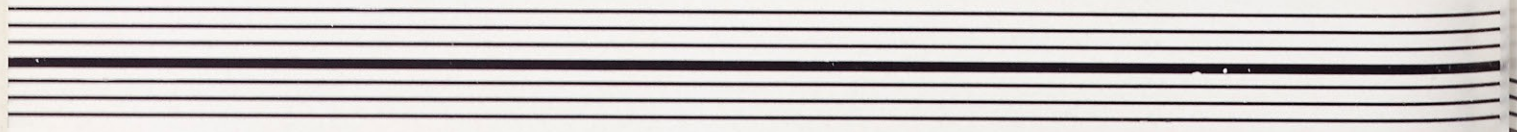
Membership in the Co-operative Association is open to any student in the school. Shares are sold, and interest and dividends are paid to the members just as in any other business.

BOARD OF DIRECTORS

| | |
|--------------------|-----------------------|
| Martha Cantalin | Chairman |
| Bernice Schleicher | First Vice-President |
| Beatrice Perez | Second Vice-President |
| Mildred Daniels | Secretary |
| Florence Herre | Manager |



Rear—F. Herre, B. Schleicher
Front—M. Cantalin, M. Daniels, M. C. Jones



PART THREE— ORGANIZED INTERESTS

Webster College without her organizations is an idea that could hardly be conceived, for since her very beginning Webster has fostered various extra-curricular activities, and under her ever watchful eye they have grown in size and importance. The promotion of friendly interest among fellow students, the realization of ability and initiative in responsibility, the broadening of perspective through experience—these are but a few of the merits which her clubs claim.

As the needs of her students increased, so did the number of her organizations, until now they represent nearly every department in the school, and provide for the religious, intellectual, social, and athletic interests of the students.



The L A U R E T A N U M for
Sodality



Left to Right—M. L. Travers, R. M. Hentzen, P. Quick, J. Gillespie, M. J. Greenslade, D. Rogles, F. Martinek, M. M. Ritter, E. Merkei, B. Perez, M. M. Koenitz, F. Herre, B. Schleicher



Gathering of the Officers

OFFICERS

- Florence Martinek - - - Prefect
 Doris Rogles - - - Vice-Prefect
 Mary Martha Ritter - - Secretary
 Mary Lu Travers - - - Treasurer

The general aim of the Sodality of the Blessed Virgin Mary is active participation in Catholic Action and an increase in personal holiness. Since daily attendance at Mass and reception of Holy Communion are the best means of increasing personal holiness, this year students were given an opportunity from Ash Wednesday until the close of the year to assist at daily Mass in the College Chapel at eight o'clock.

Modeled closely on the Notre Dame religious bulletin is the Webster College Sodality Bulletin, a semi-monthly publication which made its first appearance during the second semester. The success of these innovations is due in large part to the Prefect, Florence Martinek, and the Students' Spiritual Council, who have worked hard for the realization of the ultimate aims and purposes of the Sodality.

The Sodality May Crowning on May the fifth, came as a fitting close to the year; after her official recognition the new Prefect, Marion Ware, crowned the Blessed Virgin, and Solemn Benediction followed.

Student Government Association



Standing—J. Gillespie, M. Ware, D. Pauley, M. L. Hyde
Seated, Left to Right—A. Hof, J. Raymond, A. Ritch, M. M. Ritter, C. Carroll, F. Baxter, H. Buckley,
F. Martinek, B. Schleicher, H. Ritter

The Student Government Association has three distinct purposes. First, it regulates all matters that pertain to social and disciplinary life on the campus which are not under the exclusive jurisdiction of the administrative officers of the College, and all social affairs given off the campus that are sponsored by the Association. Secondly, it maintains and forwards ideals of co-operation and of service on the students' part toward each other and toward the College. Thirdly, it insures an intelligent understanding of student duties and obligations as well as rights and privileges.

Payment of an activity fee entitles students to be members of the Student Government Association. The legislative, executive, and judicial powers of the Association are vested in the Student Government Board. Officers of the Association are the President, the Vice-President, the Secretary, the Treasurer, the Student Government Board, the Dean of Studies, and the Dean of Women.

OFFICERS

- Deanne Pauley - - - President
- Marion Ware - - Vice-President
- Jean Gillespie - - - Secretary
- Mary Louise Hyde - - Treasurer



Staunch and True—the officers of the Student Government Association

The L A U R E T A N U M for

C. S. M. C.

OFFICERS

- Eleanor Merkel
President
- Mildred Peters
Vice-President
- Jean Raymond
Secretary-Treasurer

The Nancy Havern Unit of the Catholic Students' Mission Crusade has attempted to widen its scope this year by working in collaboration with the Sodality as a committee rather than as a separate unit. In this way, contact with the entire student body can be maintained at all times.

By filling mite boxes, knitting sweaters, collecting comic sheets and stamps, and gathering food for the poor, the students have contributed much toward a full and varied program. A group of students also adopted a missionary from one of the poor sections of the United States and sent him money, food, and literature.

An innovation this year was the visit of Father William M. Markoe, pastor of St. Elizabeth's Church, and his Negro entertainers to Webster. The Unit donated to the Propagation of the Faith, to the Home and Foreign Missions, to the Indian Missions, to the Catholic University of Peking, and subscribed to various Mission Magazines.



Front—R. M. Hentzen, E. Merkel, M. Peters, M. R. Perkinson
Rear—M. J. Byrne, J. Raymond, C. Carroll

Orchestra

The Webster College Orchestra celebrated its eighth birthday during 1939. Although the members were comparatively few in numbers, a diligent weekly practice brought forth melodies that were utilized on many occasions.

With Ruth Rummelhart at the helm, the organization managed to be on duty at each Tuesday Assembly. The combined meeting of the Lions', Optimists', and Rotary Clubs of Webster Groves was enlivened by several orchestral selections. The orchestra was called upon to assist at the Sunday evening Open Forums and at the closing program of the music conservatory, as well as at other music recitals throughout the year. Baccalaureate Sunday and Commencement Day marked the final achievement of this organization, which has helped so much to foster the true Webster spirit.

Ruth Rummelhart - - - Director

Alice Thomas - - - - - Pianist

Victoria Tessmer }
Betty Huffman } - First Violins

Bernice Schleicher }
Dorothy McKinlay } - Second Violins

Florence Martinek - - - Trumpet

Cecilia Allhoff - - - - Clarinet

Anna Beth Kelly - - - Bass Violin

Mary Courtney Jones - - Drums

Florence McKinlay - - - - Cello



Left to right—B. Schleicher, C. Carroll, C. Allhoff, D. McKinlay, V. Tessmer, B. Huffman, R. Rummelhart, Director, F. Martinek, E. Yock, A. B. Kelly, M. C. Jones, A. Thomas

The LAURETANUM for Music Guild



Standing—L. Kegriss, M. Galbraith, R. Rummelhart, R. Brennan, M. Daniels, R. Irwin
Seated—M. C. Jones, C. Allhoff, E. Yock, V. A. Driscoll



Piano duet by Music Guild officers

OFFICERS

| | |
|-----------------------|----------------|
| Virginia Ann Driscoll | President |
| Ruth Rummelhart | Vice-President |
| Mary Courtney Jones | Secretary |

The Music Guild devoted the first half of the year to American music and American composers. Parallel to its study of folk music, the Guild held the outstanding affair of its year—a tea at which Dr. Patrick W. Gainer, professor at St. Louis University and director of its Glee Club, lectured on the folk music of West Virginia, and sang many of the songs.

Bach's chorales formed the subject for discussion the remainder of the year. A great number of Bach's chorales were obtained from the University of Pennsylvania which is lending its Bach collection to musical organizations who wish to study and sing these works.

During the year the Music Guild presented two assemblies, and for the musical organizations banquet, joined together with the Orchestra and the Choral Club members.

Another event in the history of the Music Guild at Webster was the joint recital on May 22 of the music majors and the Federal W. P. A. Orchestra. At this closing performance the music majors played their concertos with the orchestra.

Choral Club



First Row—R. Madden, F. Herre, A. Borgel, P. Quick, R. F. Wynn, B. Huffman, M. A. Gewinner, R. Brennan, M. Kientzy, M. E. Baker
Second Row—L. Kegriss, M. J. Byrne, B. Casey, M. Peters, C. Braun, M. L. McFadden, M. Rost, C. Beine, M. R. Perkinson, J. Hyde, M. J. Greenslade, E. Merkel, R. Rummelhart
Third Row—R. M. Hentzen, M. C. Phelan, A. Hof, M. Ware, L. Rummel
Fourth Row—R. M. Frick, M. Galbraith, A. M. Devine, B. Hellinghausen, M. C. Jones, A. O'Donnell, M. J. Nolan

For the past eleven years the Webster College Choral Club has every day in every way improved, and has brought about a deeper appreciation and keener interest in choral music. Their first appearance this year was in the Vodvil's picturesque Cathedral scene where the members, a vested choir, sang the "Gloria" from Mozart's Mass.

During the second semester the forty-five members enjoyed the rare opportunity of presenting a Sacred Concert for the St. Louis Organist Guild on April 16, and also sang the Baccalaureate Mass in the College chapel. At its closing recital on May 22, the group sang the memorable "Song of Man," accompanied by "The Little Symphony."

Besides the musical programs the Club also enjoyed such social activities as acting as hostess to the St. Louis Glee Club, an all-day hay-ride, and a formal banquet for members and alumnae on May 16.

OFFICERS

- Loretto Kegriss - - - - President
- Mary Courtney Jones - Vice-Pres.
- Mildred Peters - - - Secy.-Treas.
- Marion Ware - - - - Librarian
- Rose Marie Frick - Asst. Librarian
- Betty Hellinghausen - - Reporter
- Ruth Rummelhart - - Accompanist



A bit of harmony

The L A U R E T A N U M for
Classical Club



Standing—C. Beine, M. Ware, F. Baxter, A. Ritch
 Seated—D. Rakers, G. Meder, R. Irwin, M. Daniels, E. Pollmann, P. Costello, M. L. Hyde



Classicists relax

OFFICERS

- Florence Baxter - - - President
 Elizabeth Pollmann - - Vice-Pres.
 Virginia Leicht - - - Secy.-Treas.

Sigma Epsilon Rho, the Classical Club of Webster College, which has for its object the stimulation of interest in Latin and Greek, has completed its eleventh year.

The program for the current year followed that of the St. Louis University Classical Club in the comparison of "Modern Life and Classical Antiquity." The daily life, manners, and customs of the ancient world, Roman and Greek, formed the topic of study and research carried on by means of readings, papers, and open discussions from the floor.

Sigma Epsilon Rho is a unit of the St. Louis Classical Club which holds its monthly meetings either at the University or at one of the corporate colleges. The members of the Webster Classical Club were hostesses to a joint meeting of the club in November.

N I N E T E E N *Hundred* T H I R T Y - N I N E

Le Cercle Francais



First Row—M. F. Knoedelseder, J. Nachtmann, D. Ghio, F. L. Rothermich, E. Thornton, B. Perez
Second Row—M. M. Koenitz, V. Riehemann, T. Dudenhoeffer, H. Knapp, M. R. Perkinson, M. Peters,
B. Casey
Third Row—M. Grant, L. Rummel, M. Finke, E. Furi, J. Hyde, C. Jacobsmeyer, D. Ottens

Membership in Le Cercle Francais is restricted to students enrolled in French classes and to those who have completed at least one year of college French. The organization aims at promoting a greater interest in the French language and customs.

The club, which meets bi-monthly, has as moderator Monsieur Christian Bonnet, instructor in French. Under his guidance the club is able to have lively informative meetings productive of learning.

This year saw the inauguration of a French Club Bulletin, LA VOIX, written by members of the club. It did much toward giving the students actual experience in writing in the French language.

Highlights of some of the meetings were skits presented in French by some of the members. Mlles. Knapp, Dudenhoeffer, Hyde, and Riehemann enacted a scene from the famous old French farce, L'Avocat Pathelin, and Mlles. Ware and Leicht gave an amusing skit entitled Pas Assez D'Exercice.

OFFICERS

Evelyn Thornton - - - President

Kathleen O'Rourke - Vice-President

Francine Larson - - - Secy-Treas.



Moderator Monsieur Bonnet giving a few pointers

Spanish Club



First Row—N. Allison, A. A. Nusz, M. J. Nolan, H. Ritter, M. A. Kilkenny, L. Kegriss
 Second Row—J. A. Gosen, K. Nuttli, M. Galbraith, C. Braun, R. M. Hentzen, I. Hoban
 Third Row—M. Daniels, A. Hof, P. Costello, G. Meder



Spanish flavored with knitting

OFFICERS

- Natalie Allison - - - - President
 Mary Galbraith - - Secy.-Treas.

Since the purpose of the club is to foster a greater interest in Spanish life and customs, El Centro Hispano-Americano has been an outstandingly active organization. This year, meetings were conducted twice a month in the Spanish room. After a short business meeting, a planned entertainment, in which the members took part, lent informality to the occasion. Playing games, holding contests in Spanish, and discussing the art and literature of the country gave an opportunity to the members for conversing in Spanish.

On Pan American Day this club takes charge of the Student Assembly, and plans a suitable program for the College. This year a pantomime, The Pageant of the Americas, was presented, which was enlightening and entertaining.

At an informal buffet-supper in the Pink Room the members united with the Loretto Players, and an enjoyable evening brought the activities of El Centro Hispano-Americano to an appropriate close.

International Relations Club



Left to Right—M. F. Knoedelseder, I. Hoban, M. V. Casey, Dr. Donovan, Moderator; M. Daniels, M. L. Travers, R. Madden, M. Belt, J. Rafferty

The International Relations Club with Dr. George Francis Donovan, the director of the History department, as its moderator, has completed its third year of activity since its reorganization. The Club was organized for the purpose of studying and discussing those national and international problems and issues which are daily transpiring within and without our national borders, and which vitally concern our American life and institutions.

The membership of the club is limited to twelve. This restriction was thought necessary because of the amount of time required in preparation and discussion of the material for the meetings. Thus a student of this club must, of necessity, have as her primary interest matters dealing with the field of international relations.

OFFICERS

- Mildred Daniels - - - - President
- Mary Virginia Casey - Vice-Pres.
- Virginia Leicht - - - - Secretary
- Isabel Hoban - - - - Treasurer



Catching up on International events

Chemistry-Biology Club



First Row—P. Quick, H. Knapp, M. M. Gibbons, M. M. Ritter, F. Herre, D. McKinlay, C. Allhoff,
B. Schleicher
Second Row—J. Nachtmann, M. Schmidbauer, R. Brennan, L. Knese, M. E. Baker, J. Crowley,
J. McFarland
Third Row—V. Riehemann, A. Hof, E. Furi, D. Ottens, F. Martinek, J. A. Gosen, C. Jacobsmeyer



Science at work

OFFICERS

Mary Martha Ritter - - President
Martha Cantalin - Vice-President
Florence Herre - - - Secy.-Treas.

Until the beginning of the school year of 1938-39, this club was known as the Chemistry Club, or Sigma Phi Theta. The admission of the Biology students in September, however, doubled the size of the organization, and its name was changed to that of the Chemistry-Biology Club.

To become a member of this organization, one must be interested primarily in the sciences and must have completed at least one year of study in either Biology or Chemistry.

The addresses of the Reverend A. J. Westland, S. J., of the Geophysics Department of St. Louis University, and Doctor F. L. Yntema, also of the University, were highlights of the year's activities. On Ascension Thursday the Chemistry-Biology Club joined the Mathematics-Physics Club for an all-day picnic at Corley's summer home.

Mathematics-Physics Club



First Row—F. Herre, D. Rogles, A. Borgel, E. Furi, M. Peters, D. McKinlay, M. C. Jones
Second Row—L. Corbett, M. M. Ritter, L. Rummel, R. Brennan, R. M. Hentzen, M. E. Hoffmeister.

In its comparatively few years of existence the Math-Physics Club has progressed rapidly under the very able supervision of Sister Mary Borgia. Another one of its very loyal supporters has been Sister Mary Germaine, who has joined the Mathematics and Physics Departments again this year.

The meetings are held the second Thursday of every month in the Math room. At these meetings talks are given and problems are explained by the members of the club, after which discussion follows. The practice of expressing oneself in scientific terms before a group is a great benefit, especially to those who are training to be teachers. These talks also afford the opportunity to obtain knowledge of the history of Mathematics. This year the talks were unique, as some of the theses written by former students were reviewed.

OFFICERS

Florence Herre - - - - President
Doris Rogles - - Vice-President
Mary Elizabeth Hoffmeister—
Secretary-Treasurer



Discussing Math?—or Physics?

Photography Club



Left to Right—D. McKinlay, M. V. Casey, F. Martinek, I. Hoban, C. Carroll, M. Belt, V. A. Driscoll, M. R. Perkinson, M. Ware, A. Ritch, F. Herre, E. Merkel, Mr. James, Moderator



Taking pictures of each other taking pictures of each other

OFFICERS

Mary Rita Perkinson - - President

Virginia Ann Driscoll - Secy.-Treas.

In May, 1938, the Webster College Photography Club was organized for the purpose of fostering interest in the science of photography and for publicizing Webster College.

The club was received enthusiastically in the school as evidenced by its maximum membership in its first year.

The members have devoted their meetings to the study of the fundamentals of photography. Under its moderator, Mr. Louis James, of St. Louis University, the club has done work in printing, enlarging, copying and developing.

In recognition of their fine work, the members were asked to take the group pictures of classes, organizations, and activities for the Nerinx Hall Year Book.

Athletic Association



Standing—G. Meder, M. L. Hyde, A. Ritch
Seated—D. McGillen, Miss Larsen, Moderator

The Webster College Athletic Association has for its purpose the promoting and sponsoring of physical activities which tend to develop leadership and sportsmanship. This purpose has been nobly upheld from its very beginning in 1920, when it comprised only those girls actively interested in sports. In 1929, the membership was extended to include inactive members as well, and a point system was adopted to govern participation and awards. This year the point system was revised and placed on a thousand-point standard, thus giving a greater stimulus to inactive members.

At the beginning of the year, hockey was introduced. This sport took the place of Volleyball, which now follows the winter months of Basketball. In the spring, the Athletic Association sponsored tournaments in baseball, track, and tennis. All activity was brought to a close on Field Day and at the Athletic Banquet where awards are given to the outstanding class in athletics and to individual winners in all sports.

OFFICERS

- Dorothy McGillen - - - President
- Mary Lou Hyde - Vice-President
- Gloria Meder - - - - Secretary
- Ann Ritch - - - - - Treasurer



Discussing Game-schedule with Coach Larsen



PART FOUR— FAIR PLAY and TEAMWORK

Athletics indeed afford an opportunity for physical development, interest in sports, and care-free hours of fun, but more than this, athletics, properly taught, should instill in the students a spirit of sportsmanship which will endure long after the close of their college life.

Co-operation with teammates, essential for the success of any undertaking, and friendly competition, necessary for incentive, are the everyday experiences of Webster sports. It isn't whether you win or lose but how you play that counts. To play a fair game as well as you can, without pride in victory, without malice in defeat—this constitutes the ideal of sportsmanship; this is the essence of life. This is the ideal which Webster holds up in all her activities, in all her tournaments. Hence, having followed the rules, a Webster girl is indeed a "true sport."

Basketball

Basketball claimed the outstanding position in this year's Athletic program. The number of girls who came out for the sport is proof of its widespread popularity. The Class tournament preceded the varsity season this year. A spirit of friendly rivalry between the classes marked the hard-fought, hotly contested games. The Juniors won the tournament after the second round. The results:

| | Won | Lost |
|------------------|-----|------|
| Freshmen | 0 | 3 |
| Sophomores | 2 | 2 |
| Juniors | 3 | 0 |

The varsity squad was chosen early in the season, and, after a heavy schedule of practices, anticipated its first opponent. Mary Louise Hyde, a star guard, was elected captain. The season opened with Webster playing Fontbonne College, February 18, resulting in a Webster victory 24-12. The St. Louis Hockey Club visited Webster on March 3 and, after a close game, was defeated 25-23. Webster played at Maryville College, March 10, and suffered its first and only defeat by a score of 25-23. At C. B. C. on March 12, Webster again defeated Fontbonne 19-9. Maryville visited Webster on March 18, to be defeated by Webster 20-16. The last game of the season was on March 24, when Webster met and won over Harris Teachers' College 22-11. Since the results were tied, Webster shared top honors for the basketball championship with Maryville. The members of the squad were: forwards—Ann Ritch, Eileen Reid, Mary Jane Greenslade, Ann O'Donnell, Gloria Meder, Dorothy McGillen; guards—Mary Louise Hyde, Captain; Florence Baxter, Virginia Ann Driscoll, Jane Frances Hyde, Catherine Carroll, Elizabeth Pollmann.



First row—Miss Larsen, Coach; E. Reid, E. Pollmann, M. L. Hyde, Captain; V. A. Driscoll, J. Hyde
 Second row—F. Baxter, G. Meder, A. O'Donnell, C. Carroll
 Missing—D. McGillen, A. Ritch, M. J. Greenslade

The Season in Brief

This year was marked by the introduction of a new sport—hockey. The sport was enthusiastically received, judging from the way the girls hit the ball (it really didn't make much difference in which direction). Then there were times when the girls swung but the ball escaped and someone's shin was substituted. Bruised shins, however, could not dull the excitement and fun of the games. Hockey is here to stay and all are looking forward to its continuing next year.

After the strenuous basketball season, volleyball was a decided relaxation. Practice was marked by much joking and trifling. After awhile, no one tried to guess where the ball was going; in fact it went backward, sideways, straight up, anywhere but over the net. The ball was thought to have a decided liking for the rafters; it frequented them often enough. Practice became more serious as the class tournament neared. This year the tournament was won by the Sophomores.

As soon as the weather permitted outdoor sports, baseball, of the soft variety, became the favorite pastime on the back campus. The more ambitious play field since there is less chance of the ball coming out there and since there are more shade trees to protect the easily freckled type. Even these are put to work (and very often, too) climbing the fence to retrieve the ball from Big Bend after a "homer." Serious playing, however, is quite evident when

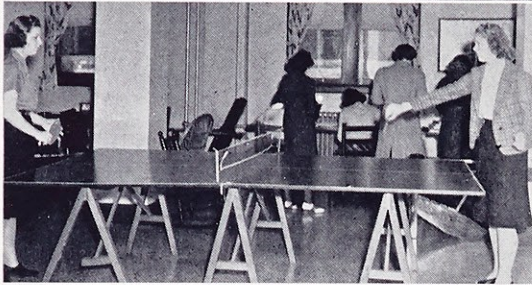
(Continued on page 81)

The LAURETANUM for

The Season in Pictures



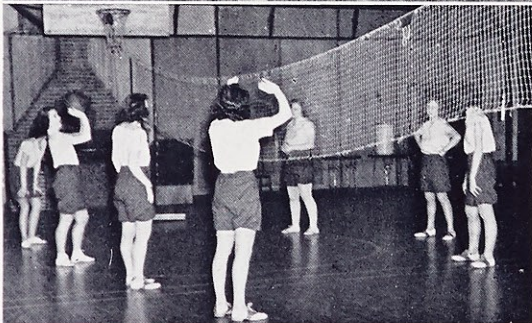
HOCKEY



PING-PONG



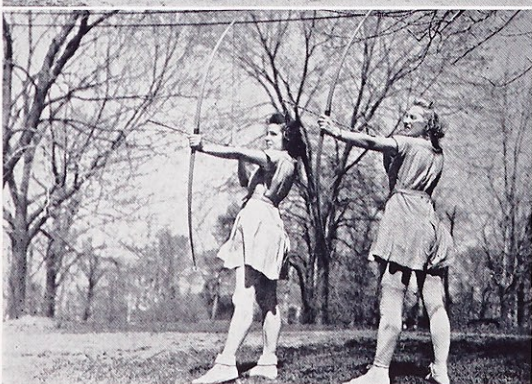
BASEBALL



VOLLEYBALL



TENNIS



ARCHERY

The Season in Brief

(Continued from page 79)

the class teams are chosen for the tournament, the finals of which are played on Field Day. Last year the season closed with the Freshmen victorious.

April and its showers past, the tennis court is put in condition for the annual tournament, consisting of both doubles and singles. Archery, another new sport this year, proved interesting and novel. Horseback riding classes were held at Missouri Stables every Saturday. The more inexperienced rider, being much too modest in extolling her ability, is usually helped onto a slow horse, and wanders into the ring. There her worthy steed inevitably takes his position in the middle, where, heedless of his rider, he obstinately stands. Equally unconcerned, the beginner is content to sit there—just to get the "feel" of the horse, you know. Riding, however, is truly a wonderful sport and affords quite novel experiences.

The athletic season closes each year at Webster College with the traditional Field Day and Track Meet. The finals of the baseball and tennis tournaments are held. The track meet, consisting of the fifty and seventy-five-yard dashes, baseball and basketball throws, standing broad, running broad, and high jumps, and a class relay, was won last year by the Sophomores.

The climax of Field Day is the Athletic Banquet held in the evening at which Faculty and students applaud the presenting of Athletic awards.

The LAURETANUM for



Webster Off Guard



N I N E T E E N *Hundred* T H I R T Y - N I N E

Sponsors

Mrs. L. A. Bowlin

Mr. and Mrs. Charles Knoedelseder

Dr. and Mrs. T. F. Maher

Mr. John F. McFadden

Mr. and Mrs. G. E. Quick

Patrons

Mr. and Mrs. A. Roy Allison
Mrs. A. C. Backer
Mr. and Mrs. J. C. Baker
Miss M. E. Baker
Mr. and Mrs. C. R. Baxter
Mr. and Mrs. A. Beine
Mr. and Mrs. A. I. Belt
Mr. and Mrs. Robert J. Boehm
Mr. and Mrs. John M. Bowlin
Dr. and Mrs. E. P. Brady
Mr. E. Brungard
Miss Betty Buddy
Mr. and Mrs. J. B. Buckley
Mr. Oscar Bueneman
Miss C. Buehler
Mrs. J. Bulfin
Mr. and Mrs. A. Cantalin
Mr. and Mrs. J. E. Carroll
Mr. and Mrs. Thomas M. Chapman
Miss V. Chapman
Mr. B. Claeson
Miss A. Coleman
Mr. and Mrs. R. L. Crowley
Mr. F. C. Daniels
Mr. W. T. Dooley
Mr. and Mrs. E. Drees
Mrs. H. B. De Pew
Miss Ruth Fabick
Mr. and Mrs. A. W. Finke
C. Fix and E. Scott
Miss M. A. Fregeau
Mr. Gamp
Mrs. William Ghio
Mrs. Julia Grafeman
Mr. and Mrs. W. Grafeman
Mr. and Mrs. Carl A. Griesedieck
Miss Moira Hayes
Mr. Geo. F. Harrington
Mrs. Margaret A. Healy
Mr. J. J. Hedderman
Mr. and Mrs. F. J. Herre
Mr. and Mrs. J. J. Hoban
Mr. and Mrs. Fred Hof
Mr. and Mrs. J. A. Holliday
Mr. and Mrs. E. J. Houlihan
Mr. and Mrs. David J. Hyde
Mr. and Mrs. B. F. Jacobsmeyer
Mrs. J. M. Janes
Mrs. H. J. Jenneman
Mr. and Mrs. Hugh Jones
Mrs. J. T. Kavanaugh
Mr. and Mrs. F. D. Kegriss
Miss M. A. Kilkenny
Mr. and Mrs. J. R. Knapp
Mr. and Mrs. L. H. Knese
Miss L. Knese
Mrs. M. F. Koenitz
Miss K. Larson
Mrs. A. Levy
Mr. and Mrs. W. F. Madden
Mr. and Mrs. J. V. Martinek
Mr. and Mrs. L. A. Matthews
Mr. and Mrs. G. H. McFarland
Mr. and Mrs. R. A. McKinlay
Mr. Anthony J. McMahon
Mr. and Mrs. W. Miller
Miss C. Morehead
Mr. H. T. Nolan
Mr. and Mrs. D. O'Regan
Mr. and Mrs. H. Ottens
Mr. and Mrs. H. E. Pauley
Mr. and Mrs. Leonard Perez
Mrs. R. A. Perkinson
Mr. and Mrs. Carl G. Peters
Mrs. M. Pollman
Mr. and Mrs. L. M. Raftery
Miss Jean Raymond
Mr. and Mrs. L. Ritch
Miss Doris Rogles
Mr. and Mrs. John A. Ryan
Miss Ruth Savage
Mr. W. Savory
Miss Theresa Shea
Mr. and Mrs. L. H. Schleicher
Mrs. E. Schlingmann
Mr. and Mrs. C. B. Schmidbauer
Miss Marian Schmidbauer
Misses Ida and Rose Schneiderhahn
Mr. and Mrs. J. N. Thomas
Mrs. J. T. Thurmond
Misses Helen and Winifred Toner
Mr. and Mrs. J. T. Travers
Mr. and Mrs. A. B. Vierheller
Mr. Oscar Winter
Mr. and Mrs. M. J. Walsh
Mrs. W. M. Wynn
A Friend
Lowry's Home Made Candies
A Friend

RUBICAM SCHOOL

offers

Thorough preparation for
Secretarial, Stenographic, and
Accounting positions
Placement Service without charge
to Rubicam Graduates

SUMMER CLASSES IN SHORTHAND
AND TYPEWRITING

Day and Evening Classes
Individual and Group Instruction

▼
THREE CONVENIENTLY LOCATED
SCHOOLS

4933 Delmar Blvd. — Forest 3900
3469 S. Grand Blvd. — LaClede 0440
7701 Forsythe Blvd. — Cabany 4102

Compliments

of

Dorr & Zeller Catering Co.

•
DeBaliviere and Waterman

Houlihan Nursery Company

Shade and Fruit Trees
Ornamental Shrubs
Evergreens and Roses

•
Office and Nursery
Mosley Road Between Ladue and
Olive St. Road

Phone, Terryhill 4-2511
CREVE COEUR, MO.

Compliments of

Koncen Meat Co.

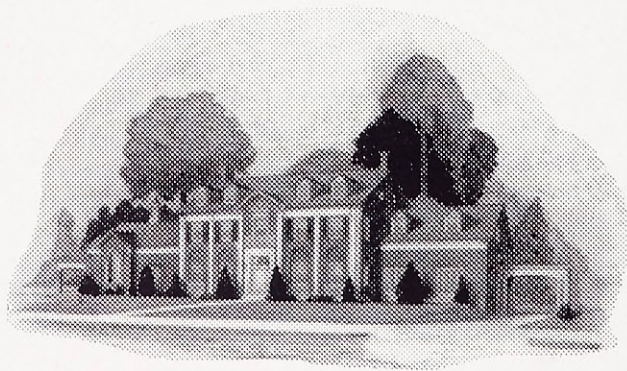
6210 Easton Ave.

JOS. WARD PAINTING CO.

Painting Contractors

3110 Easton Avenue

JEfferson 0633



OUR PRICING PLAN — with its
broad schedule of charges — per-
mits a final tribute of reverent re-
finement in complete harmony
with any financial circumstances.

New Hoffmeister Mortuary

6464 Chippewa Street

Phone, FLanders 1938

Associate of C. Hoffmeister
Undertaking & Livery Company,
7814 South Broadway

Webster Groves Trust Company

P A C K A R D

BERRY MOTOR CAR COMPANY

2201 Locust Street

"Ask the Man Who Owns One"

*. . . Training for
Business Positions*

Secretarial

Stenographic

Accounting

Day and Evening Classes

Three Convenient Locations

BROWN'S SCHOOL

Paul Brown Bldg., 818 Olive

5858 Delmar 3522 Hebert

CEntral 2293

**Wild's Can't Be Beat for
Good Things to Eat**

"A Clover Farm Store"

•
Choice Meats, Fruits, Vegetables
Wholesome Foods and Groceries

•
3312 Pestalozzi PProspect 9421

COMPLIMENTS

of a

FRIEND

Compliments

of

ST. LOUIS BELL FOUNDRY

2735 Lyon

***Robbins
Jewelry Co.***

ARCADE BUILDING, 3rd Floor

St. Louis, Mo.

•
**P. O. Howe
Hardware Co.**

646 E. Big Bend

Webster 652
•

**RICHMOND HEIGHTS
GROCERY CO.**

7368 Dale Ave.

▼
Richmond Heights, Mo.

Good Glasses at Moderate Prices

ALBERT ALOE, INC.

805 LOCUST ST.

Edw. Keith GARfield 0817 A. Aloe

Compliments of

Lamment's Dept. Store

110 W. Lockwood, Webster Groves, Mo.

Shoes for the Entire Family

Gratiot Shoe Store

6590 SCANLON AVE.

Thurmond's Shoe Store

QUALITY SHOES AND HOSIERY

105 W. Lockwood, Webster Groves, Mo.

OLD VIENNA PRODUCTS

Distributors of

Oke Doke Popcorn

and

Affiliated Products

4339 DUNCAN

•
Compliments

of a

Friend
•

Compliments of

**A. H. DUDENHOEFFER
CANDY CO.**

•
3715 Gravois

LAclede 1825

We Deliver

JAKE MAURER

6008 Kingsbury 510 S. Hanley

FINE MEATS

FANCY FRUITS AND VEGETABLES

CAbany 4050

CAbany 4711

Compliments of

OLD ORCHARD SHEET METAL WORKS

The Crystal Rink

3411 Cook Ave.

Roller Skate the Year Around

•

The Lorelei

4525 Olive St.

*Swimming, May to Sept.
Roller Skate Sept. to May*

•
Compliments

of

**Old Orchard
Drug Store**

•

PHELAN COAL AND COKE

Shell Coke in Bags

ZEIGLER AND IGNITO COAL

Wood and Kindling

Quality Always Pleases

*Bonny Beauty
Salon*

732 E. BIG BEND

Webster 1585

Webster Groves

**WHITE WAY SUPER
SERVICE STATION**

3500 S. Kingshighway



Gas, Oil, Greasing, Batteries
Auto Laundry, Tires
FLanders 7900

F. J. Herrmann
Florist

Flowers and Plants for All
Occasions

Member Florists Telegraph Delivery Assn.

6653 Enright—Delmar Loop Bldg.
CAbany 9288

Compliments of

•
JOE GARAVELLI
•

5701 DeGiverville

Colonial Venetian Blinds . . .
Ornamental Rods . . . Shades

RAY H. SUTTER SHADE SHOP
6042 Delmar Blvd. CAbany 1513

CHestnut 7244 CHestnut 7245

SCHMECKEBIER CANDY CO.

416 South Seventh Street

The
PARKMOOR

All Cream
Ice Cream

•
Delicious
Sandwiches

CHARLES K. HAUN

Florist

FOrest 3744 5268 Delmar Blvd.

•
Compliments
of a
Friend
•

For Finest Work Call at . . .

ARCADE SHOE REPAIR SHOP

Shoes Rebuilt Not Cobbled
126 W. LOCKWOOD

GEO. C. BENNE

Grocery

748 Marshall Webster 4300

•
Compliments
of a
Friend
•

REAL ESTATE RENTALS
INSURANCE

Rowena Dashwood
Realtor

Mildred M. Rummelhart, Secy.

▼
415 Colorado Springs Natl. Bank Bldg.
COLORADO SPRINGS, COLO.
Phone, Main 1564

● *Interested in Candid Photography?*

Our experienced personnel is ready and willing to give unbiased advice on the merits of any camera and assistance in the operation of the one you may select.

610 **Erker's** 518
Olive N. Grand

GUILD OPTICIANS



**Aalco Rug
and
Upholstering Co.**

3432 Lindell

**GREEN LEA
Ice Cream Shoppe**

FAMOUS FOR MALTS

—○—
INDIVIDUAL MOLDS AND
ICE CREAM CAKES
A SPECIALTY

—○—
30 W. Lockwood Webster 3018

COMPLIMENTS
OF A
FRIEND

Agent and Warehouse—Greyvan Lines
STORAGE—FIREPROOF

John A. Ryan, Inc.

Coast to Coast

MOVING

Local and Long Distance

121-123 N. Third St., E. St. Louis, Ill.

WHEN IN FERGUSON VISIT . . .

Sproul's Service Station

801 S. Florissant Road

Open All Night

Ray's Photo Shop

PHOTOGRAPHIC

Work of Quality

Artist Supplies

300 Feet East of the Ozark Theater

118 E. Lockwood Webster 2591

●
ANTLES
Webster Groves
PHARMACY

●
662 E. Big Bend
●

Patronize the
COLLEGE
BOOK
STORE

Budde Motor
Company

▼
7 2 0 E . B I G B E N D

St. Louis Secretarial
School

320 N. Grand Boulevard

COVERS AND BINDING FOR THE

1939 LAURETANUM

BY

BECKTOLD COMPANY

ST. LOUIS, MO.

Another

BOOK

b y C E N T R A L

CENTRAL ENGRAVING CO.

114 N. 7TH STREET

ST. LOUIS, MO.