

YOU ARE IDEAL: A Critical Literature Review of the Transformative Impact of Service-Learning Projects and Integrated Resources for Individuals with Disabilities

Doctoral Digital Portfolio

<https://www.kaylan-norton.org/>

By

Kaylan Norton

Submitted to the School of Education of Webster University

in partial fulfillment of the requirements for the Degree of Doctor of Education (Ed.D.) in  
Transformative Learning in the Global Community

December 2025

©Copyright by

Kaylan Norton

ALL RIGHTS RESERVED 2025

*The author hereby grants Webster University permission to reproduce and distribute publicly paper and electronic copies of this doctoral digital portfolio (website, research paper, and recorded videos) in whole or in part for educational purposes.*

### **Dedication**

First, I dedicate this work to God, who is the source of all wisdom, strength, and purpose in my life. His guidance has sustained me through every challenge and triumph through this journey. As Proverbs 3:5-6 remind us:

*“Trust in the Lord with all your heart and lean not on your own understanding; in all your ways acknowledge hi, and he will direct your path.”* This scripture has been my foundation throughout my journey.

To my **family**, thank you for your unwavering love, prayers, and encouragement. Your sacrifice and support have been instrumental in helping me reach this milestone.

To my **friends**, your kindness, patience, and motivation have carried me through moments of hardship. I cherish every word of encouragement and every shared memory.

To my **mentors, colleagues and support**, thank you for investing in me, challenging me to grow and believe in my vision. Your wisdom and support have helped shape this work into what it is today.

I dedicate this study to the memory of my late grandparents Oliver Sr. & Mary Steverson. This is a moment I have made history for our family that I wish you all were here to witness this accomplishment. However, I grateful for the values and determination you both have instilled in me through the years God bless me to have you both. I love and miss you both.

This dissertation stands as a testimony to God’s faithfulness and the love and support of an incredible community. I am forever grateful.

### **ACKNOWLEDGEMENT**

**Jeremiah 29:11, For** I know the plans I have for you,” declares the Lord, “plans to prosper you and not to harm you, plans to give you hope and a future. This process has only been possible by GOD himself. God continuous grace and keeping me humble through this entire process to successfully complete this degree. **WANT HE DO IT!!!!**

Thank you to Dr. Lee Johnson for her guidance through this journey and milestone; it was greatly appreciated. Thank you to Webster's School of Education, especially in my final term. Your commitment to student resources and their well-being is a blessing, especially in those times when students need the most help.

Special thank you to my family and friends, thank you for your prayers, encouragement and direction. To GOD be the GLORY!

### **Abstract**

The purpose of this study is to examine the relationship between diverse service-learning projects, learning opportunities, and integrated resources, and how these elements contribute to the success of individuals with disabilities. This study seeks to identify distinct types of service-learning opportunities and integrated resources available to individuals with disabilities and their families. Additionally, it aims to determine at what points across the lifespan individuals with disabilities should be introduced to these opportunities to maximize access to services and integrated supports. A critical review of literature indicates the relationship between service learning and integrated resources being a benefit to individuals with disabilities. Researchers have provided key findings despite the gaps in research to provide clarity of the learning opportunities that service learning offers with integrated resources as additional support. With inclusion of support from parents, vocational support and schools can foster a dynamic environment and support to maximize the efforts of the transformative impact of these resources.

**TABLE OF CONTENTS**

Dedication..... 2

Acknowledgement.....3

Abstract.....4

**Chapter 1**

Introduction.....8

History of Context Service Learning and Integrated Resources

Types of Service Learning

Integrated Resources

Purpose of Study

**Chapter 2**

Theoretical Framework.....18

There Intersection of Service Learning and Integrated Resources

Timing and Lifespan Perspective on Integrated Resources

When Should Integrated Resources Begin?

Early Childhood and School-Aged Years

Adulthood and Transitions

When New Needs Arise

**Chapter 3**

Literature Review.....33

The Intersections of Service Learning and Integrated Resources

Service Learning Outcomes: evidence & Limitations

Reported Benefits of Service Learning

Development Narrowing Across Educational Stages

Empowerment Versus Disablism & Central Theoretical Tension

Evaluation of Research Quality and Knowledge Gaps

Integrated Resources & Cross Sectors

Community Policy & Employment Integration

Healthcare & Interprofessional Integration

Technology & Enabled Integration

Life Span & Transition Perspective

Synthesis Gaps & Positioning of Current Study

Summary of Literature Review

**Chapter 4**

Statement of the Problem.....78

**Chapter 5**

Research Questions.....80

**Chapter 6**

Discussion and Impact to the Field.....84

YOU ARE IDEAL.....86

Conclusions.....87

AI Disclosure.....88

References.....90

**Tables**

Table 1.....21  
Table 2.....74

## **Chapter 1**

### **Introduction**

Service learning is an educational approach in which students apply theoretical knowledge acquired in the classroom through structured volunteer experiences with community-based organizations or agencies (Elmhurst University, 2023). These experiences are developed in partnership with nonprofit or social service organizations and are intentionally designed to link academic instruction with real-world applications. Through participation in service-learning activities, students deepen their understanding of course content while simultaneously addressing identified community needs.

Service learning is defined as a pedagogical framework that integrates academically relevant service activities into coursework to respond to human and community needs. This approach enables students to bridge theory and practice by combining service experiences with guided reflection in a structured learning environment (Suffolk University, 2023). The National Service-Learning Clearinghouse emphasizes that service learning provides students with opportunities to apply classroom instruction while developing essential academic, professional, and civic skills through active engagement in service to others (University of Central Arkansas, 2023).

In many academic settings, service-learning projects are formally aligned with course objectives, and student assessment is partially based on participation and outcomes associated with service activities. These projects vary in scope and design, requiring students to apply diverse skills depending on the nature of the service provided.

Multiple forms of service learning exist, each designed to address distinct community needs and educational objectives. According to the University of Central Arkansas and the National Service-Learning Clearinghouse, direct service learning involves face-to-face, person-to-person engagement in which students' service has an immediate impact on individuals or groups receiving the service. The application of service-learning approaches varies across organizational and contextual settings. The primary modes of service learning include direct service learning, indirect service learning, research-based service learning, and advocacy-based service learning.

## **Historical Context**

### **Service Learning and Integrated Resources**

Service learning emerged in the United States in the mid-to-late twentieth century as an educational approach grounded in experiential learning theory and democratic education principles. Its philosophical foundations can be traced to John Dewey's early work, which emphasized the importance of learning through experience and reflection, particularly in addressing real-world social problems (Dewey, 1938). Dewey argued that education should be closely connected to community life, a principle that later became central to the development of service learning as a pedagogical framework.

The formalization of service learning as a distinct educational practice gained momentum during the 1960s and 1970s, influenced by civil rights movements and growing calls for social responsibility in higher education. During this period, service learning was increasingly conceptualized as a reciprocal process in which students and communities mutually benefit (Bringle & Hatcher, 1996). Unlike volunteerism, service learning explicitly integrates academic objectives with structured community service and critical reflection, thereby linking theory to practice (Eyler & Giles, 1999).

By the 1990s, service learning had become institutionalized within higher education and K–12 systems, supported by empirical research demonstrating its positive effects on student learning outcomes, civic engagement, and social awareness (Eyler et al., 2001). Scholars emphasized the importance of intentional design, reflection, and assessment to ensure meaningful learning and community impact (Furco, 1996). This period also marked an expansion

of service learning into professional disciplines, including social work, education, health sciences, and disability studies.

Concurrently, the concept of integrated resources began to emerge within human services, education, and disability support systems. Integrated resources refer to the coordination and alignment of services across multiple sectors—such as education, health care, social services, and community organizations—to provide holistic and person-centered support (Leutz, 1999). Research increasingly highlighted the limitations of fragmented service delivery models, particularly for individuals with disabilities, and called for integrated approaches that address complex and interrelated needs (Kodner & Spreeuwenberg, 2002).

In the early 2000s, scholars began to explicitly link service learning with integrated resource frameworks, noting that service-learning projects often function as mechanisms for cross-sector collaboration (Bingle et al., 2016). Through partnerships among academic institutions, community agencies, and service providers, service-learning initiatives contributed to the development of integrated support systems while simultaneously enhancing student learning and community capacity (Clayton et al., 2010). In disability-related contexts, service learning has been shown to promote inclusive practices, interdisciplinary collaboration, and improved access to coordinated resources for individuals and families (Hunt & Hunt, 2021).

More recent peer-reviewed literature emphasizes service learning as a strategy for advancing equity and inclusion within integrated service systems. Researchers argue that when service learning is embedded within collaborative, multi-agency frameworks, it can strengthen integrated resources by fostering shared accountability, knowledge exchange, and sustainable community partnerships (Styczen et al., 2024). As a result, service learning has evolved from a

pedagogical innovation into a critical component of integrated, community-based service delivery models.

### **Types of Service Learning**

Direct service learning involves face-to-face interactions in which students engage directly with individuals or groups, facilitating interpersonal connection and personal engagement. This form of service is typically conducted at the service site and emphasizes relationship-building and immediate, tangible impact (Suffolk University, 2023). Common examples include tutoring children or adults, aiding in homeless shelters, coaching youth activities, and delivering educational presentations focused on violence and drug prevention (University of Central Arkansas, 2023).

Indirect service-learning addresses broader community or environmental needs without direct interaction with specific individuals. These projects are designed to benefit the community as a whole and allow students to respond to needs identified by community partners. Examples include compiling local histories, restoring historic structures, constructing low-income housing, removing invasive plant species, developing social media strategies for nonprofit organizations, and organizing community fundraising initiatives.

Research-based service learning involves systematic collection, analysis, and dissemination of information required by nonprofit organizations, government agencies, or community leaders (University of Central Arkansas, 2023). Typical activities include creating multilingual guides to community services, conducting longitudinal environmental research, developing informational materials, and mapping or monitoring natural resources.

Advocacy-based service learning emphasizes educating the public about issues of social importance while promoting awareness, civic engagement, and collective action within communities (University of Central Arkansas, 2023). Examples include organizing public

forums, implementing public information campaigns, and collaborating with elected officials to draft or support legislation aimed at community improvement.

Empirical research has demonstrated the effectiveness of service learning for students with disabilities. One study involving five students with disabilities in an inclusive sixth-grade classroom examined service-learning projects intentionally designed to enable students with disabilities to serve others. These projects were aligned with curricular objectives and real-world outcomes, allowing students to meet academic goals while simultaneously addressing community needs. Participation in service learning was associated with increased self-confidence, an enhanced sense of belonging, and opportunities for meaningful social contribution.

According to *Special Projects for Special People: Students with Disabilities Service-Learning Projects*, students with disabilities often experience learned helplessness, low self-esteem, and diminished self-efficacy. However, service-learning initiatives have been shown to improve social skills and address behavioral challenges, illustrating that service learning extends beyond traditional community service to produce transformative educational outcomes (Tannenbaum & Brown-Welty, 2006). Because service learning encompasses a wide range of activities, it can be effectively aligned with academic standards and students' Individualized Education Program (IEP) goals.

In inclusive classroom settings, service learning supports differentiated instruction, encourages collaboration among students with and without disabilities, fosters a sense of community, and promotes higher order thinking skills (Kluth, 2007; Dymond et al., 2007). Collectively, the literature indicates that service learning is both inclusive and effective for

students with disabilities and may contribute to transformative outcomes, including preparation for post-secondary transitions and employment.

### **Integrated Resources**

Integrated resources refer to support and opportunities that are accessible to all individuals within a community and are commonly conceptualized as key components of community integration. Community integration is essential to promoting long-term success, particularly for individuals with disabilities, as it ensures equitable access to critical life domains. These integrated resources encompass a broad range of areas, including citizenship and civic engagement, education, employment, healthcare, housing, peer support, recreation and leisure activities, spirituality and religious participation, and valued social roles such as marriage and parenting.

Community integration should be fostered across the lifespan and tailored to individuals' developmental stages, personal interests, and long-term goals. Regardless of age, individuals with disabilities should possess a clear understanding of the support and services available to them to facilitate meaningful participation and inclusion within their communities.

### **Purpose of the Study**

The purpose of this study is to examine and synthesize existing scholarly research on the transformative impact of service learning and integrated resources for individuals with disabilities. Specifically, this study seeks to critically analyze how service-learning experiences when intentionally designed and supported by integrated community resources contribute to improved educational, social, vocational, and life outcomes for individuals with disabilities across the lifespan. By evaluating theoretical frameworks, major findings, and gaps within the current literature, this review aims to assess the extent to which service learning and integrated resources promote community integration, equitable access to essential life domains, and the development of valued social roles. This study is intended to establish a comprehensive foundation for understanding how coordinated, inclusive approaches can enhance long-term success and inform future research, policy, and practice in disability-focused education and community-based services.

As a provider and educator in the field I have had the experience in observing and working in the field of experiential learning to ensure that individuals with disabilities have service-learning opportunities that would benefit them long-term in support of the integrated resources in their communities. I can and will continue to use my resources as provider and educator to enhance and inform all families of opportunities that can help impact everyone in a positive direction to an essential life.

## Chapter 2

### Theoretical Framework

The theoretical frameworks that underpin service-learning give precedence to experiential and transformative learning, although there is intermittent and veiled use of the two to justify studies on disability. The theory that appears the most as the foundation behind service-learning is the experiential theory of learning, namely that of Dewey and Kolb, which makes learning a process that is active and reflective, based on experience in the world. Dewey points out the philosophy of education that is mutually related to experience and reflection, which educates human beings on the fact that a lot of learning occurs when individuals are exposed to the environment and critically analyze the experiences they have. The experiential learning cycle by Kolb also completes this process in stages of concrete experience, reflective observation, abstract conceptualization, and active experimentation. They are typical in service-learning disability literature in support of community work and reflective practice, but typically in the literature, these principles are mentioned at an abstract level with no implementation in research design or outcome measurement (Olnes, 2008; Winter, 2023). Experiential learning thus comes out as a presumed process and is no longer viewed as an empirically tested process.

Transformative theory is an expansion of the experiential learning theory, which dwells on perspective change, critical self-reflection, and the end of the meaning-making as the main results of learning experiences. The clearest operations in transformative learning are the ones in the postsecondary and transition-related literature, which were discovered in the reviewed literature. The case of Kinsella and Hollins (2022) is one of the examples since their service-learning peer mentoring project is grounded in the transformative learning theory, in which the

structured reflection and working with relation to others and identity formation are directly connected to the altered assumptions of the students towards disability, employment, and social participation. According to their results, occupational therapy students were taught to be more conscious about the social, emotional, and cognitive diversity, and those participants who had intellectual and developmental disabilities displayed the development of their communication and coping skills, along with their self-advocacy skills. The authors emphasize that good relationships must be built through collaboration since they not only demand active listening but also respect and clarity of communication without jargon, and long-term changes cannot only be reached through getting involved in the process (Kinsella & Hollins, 2022). This explicit theoretical framework distinguishes their work from most of the rest of the service-learning literature.

On the other hand, the prior and K-12-focused studies tend to assume transformation by reporting growth in motivation, confidence, and sense of purpose without defining the theoretical processes underlying the development. The results of a qualitative case study of elementary school students with disabilities participating in service-learning projects conducted by Olnes (2008) document positive improvements in self-confidence, social skills, and civic awareness. The researcher indicates that service-learning projects are an effective tool for improving the motivational levels of students, their academic performance, social skills, and self-confidence.

Although these outcomes are referenced to the principles of experiential and transformative learning, the study fails to connect these changes to a concrete transformative learning model and to clarify how the process of reflection contributed to students changing their points of view or identities. Instead, change is assumed because of more immediate outcomes,

such as students having acquired a sense of purpose beyond themselves, but which, however substantive, is not conceptually described in theoretical literature.

It is also a trend of implicit theoretical application that systematic and narrative syntheses can extend. A systematic review of the experiences of students with disabilities who undertook service-learning also finds a range of social, emotional, and civic gains, including self-confidence, peer relationships, motivation, and belonging (Garwood et al., 2023). They indicate that opportunities that are activity-based and aim to encourage students to be active in the process of learning and practicing a wide range of academic and practical life skills are numerous in in-service learning.

However, even though the number of outcomes under consideration is large, the synthesis does not connect these findings to a single theoretical framework of learning or transformation. Instead, outcomes are across other environments and methods, making it difficult to determine whether the mentioned benefits refer to short-term responsiveness, maturation of growth, or deep-rooted change. Therefore, transformations have been applied more extensively to proxy measures than to theoretically calculated procedures.

The concepts of self-efficacy and participation are also common in the literature to rationalize perceived outcomes, particularly those of confidence, agency, and engagement. Studies of students with disabilities are usually linked to the concept that significant service positions can enhance self-efficacy when a person feels competent, contributing, and appreciated in society (Olnes, 2008; Garwood et al., 2023). Although these interpretations are congruent with social cognitive theory, there are fewer studies that explicitly quantify self-efficacy, or that focus on how differences in perceptions of competence contribute to involvement and/or autonomy in

the long term. Quite the contrary, self-efficacy can be inferred from qualitative contemplations or accounts by observers; therefore, it cannot be used to determine its mediating role between service-learning involvement and post-service outcomes.

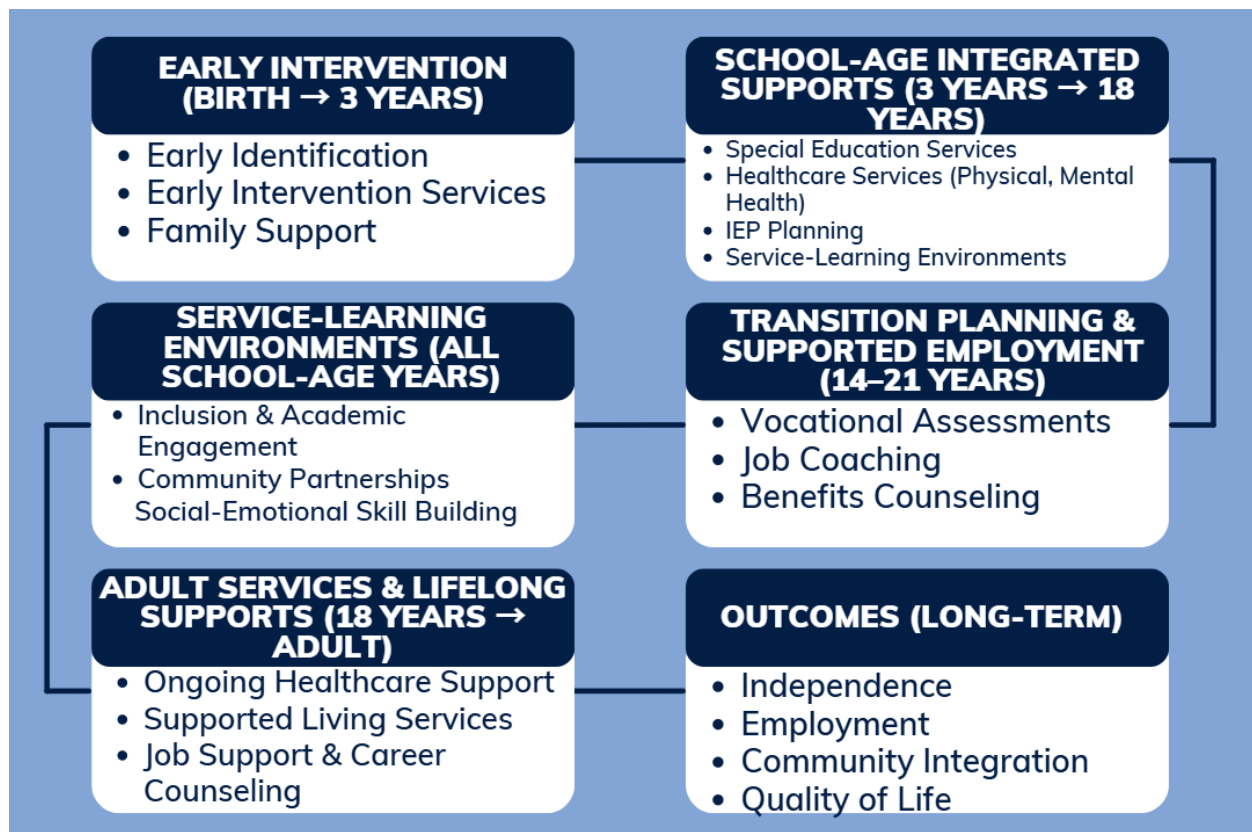
All this literature reflects a similar trend: transformation is frequently proclaimed but rarely formalized or theorized unlike the fact that Kinsella and Hollins (2022) categorically define the concept of service-learning as a transformative process with its theoretical foundation, the previous and more abstract syntheses present transformation as a set of characteristics that can be observed but not immediately, such as confidence, belonging, and motivation (Garwood et al., 2023; Olnes, 2008).

This vagueness of concepts hampers the discipline's ability to distinguish meaningful change in perspective from immediate psychosocial profit. Moreover, the studies lack theoretical consistency, which creates challenges in matching results, determining efficacy, and identifying which aspects of service-learning and integrated supports are most likely to have a lasting impact. The solution to this dilemma is to be more conscious in relating the experiential events, reflective mechanisms, and coordinated resources to the clearly defined theories of change to strengthen the conceptual and empirical framework of research on disability-based service-learning.

The Integrated Resources and Service-Learning Model is planned to offer all-inclusive, integrated care to people with disabilities during their lifespan, which entails academic, employment-related, medical, and social services. The framework acknowledges the relevance of early initiation and early intervention (Luhr et al., 2023) making sure that individuals are provided with the services they need since their birth. Early intervention (speech and physical

therapy, family support, and case coordination) has been found to have a long-term impact on children with disabilities and allow them to achieve developmental milestones and become independent (Smythe et al., 2020). It is an important stage that gives the basis to further academic activities and social interaction. Integrated services are provided as children leave the preschool age category and enter school-age years in the form of special education services, healthcare support, and service-learning environments where students can acquire practical experience and the key skills including teamwork and leadership that are important to their future.

**Table 1.** This table illustrates a lifespan-oriented approach that highlights the progression of integrated support and service-learning opportunities for individuals with disabilities from early intervention through adulthood.



*Note:* The table was created by Kaylan Norton to illustrate lifespan framework of integrated support and service-learning opportunities for individuals with disabilities

This framework diagram represents that the support present at an early age will continue to support an adult service and lifelong support making sure that the individuals with the disability not only have prepared them to become an educational success but also in the future employment and integration into society. A shift in school-aged supports to transition planning and supported employment is crucial to the provision of the skills and services required of the student to succeed in the adult environment. Vocational evaluations, employment training, and counseling benefits (Kaiser et al., 2022) are important in narrowing the education-employment gap to make sure people are ready to work in competitive and integrated workplaces. The last phases of the framework underline the significance of the adult services and lifelong supports that offer extended healthcare, job assistance, and career guidance to enable the stable community involvement and improve the quality of life (Gréaux et al., 2023).

This model entails the incorporation of assistive technology and cross-sectoral partnership because every service delivered should be accessible, personalized, and effective at all levels. Winter (2023) asserts that the use of assistive technology in learning institutions, medical facilities, and vocational training programs enhances independence of people significantly especially in mobility, communication, and learning. Moreover, the interprofessional collaboration between sectors education, healthcare, vocational rehabilitation makes people have comprehensive care and service is not fragmented (Castro-Kemp et al., 2022). Such partnerships offer a cohesive strategy to enable care, which is more continuity and fewer obstacles to accessing services in multiple spheres of the life of an individual.

The results of this coordinated method are well connected with the idea of increased independence, work, integration with the community, and the improvement of the quality of life. All stages of the model are focused to maximize long-term success because disabled people should be prepared with the means, abilities, and the circles of support they require to lead successful and fruitful lives. According to the proposed transition planning by Tyldesley-Marshall et al. (2025), transition planning is especially significant in that students with disabilities have the chance to engage in integrated employment environments. This is a coordinated, lifespan-based method, which means that people do not encounter unnecessary service gaps, which is essential in terms of their success and well-being in the long term.

## **Timing and Lifespan Perspective on Integrated Resources**

### **When Should Integrated Resources Begin**

The integration of resources ought to be a lifelong process, and more so, they should be done at the earliest stage in the life of an individual, that is, those with disabilities should be given attention at an early age. Studies by Smythe et al. (2020) and Luhr et al. (2023) reveal the highly beneficial effect of early intervention (at the age of birth to 3 years) on the developmental and functional outcomes of children with disabilities. This critical period should be used to identify and refer to the integrated services at an early stage to intervene in the developmental delays and help in the acquisition of major skills that will enable this person to be independent overall. Early intervention is not only effective in dealing with immediate needs but also prepares for future success in terms of education, social and vocational. When early intervention programs are designed to include services in both the healthcare and education as well as the social care sectors, children with disabilities experience a comprehensive care that is holistic and through which they are able to achieve the developmental milestones and succeed both in the structured and social settings. Early intervention into the needs of the child enables the integrated resources to help the child to gain greater active interaction with both the educational and social environment, which puts them on the path of self-reliance and integration into society as they mature.

The early recognition and treatment are of particular importance in promoting further developmental outcomes like language acquisition, development of motor skills, and social skills. The sooner the intervention is done the better it is in reducing developmental delays and enhancing functional outcomes. As mentioned by Smythe et al. (2020), multidisciplinary support

through integrated systems aids children in accessing therapeutic services that are essential in their developmental stages and that includes speech therapy, physical therapy, and behavioral support. In the initial stages of developing a coordinated system of care, families, teachers, and healthcare providers can collaborate to stay aware of the developing needs of the child and start providing the resources that would help them achieve their potential. Early intervention, therefore, does not only help the child but also empowers the families, agreeing to grant them the tools and support required to work through the complexity of caring about children with disabilities.

### **Early Childhood and School- Aged Years**

Early childhood and school-going years are critical periods in the life of a child and combined resources at this stage play a crucial role towards their future success. In these years, service delivery based on family requires adoption of family-centered approaches. Part C services, as a service that offers early intervention to children under the age of three years, combines services of various disciplines such as healthcare service, education service, and social services to provide the child and family with comprehensive support. This integration facilitates a unified approach towards care, and it assists in overcoming developmental delays and avoids the fragmentation of care that usually comes about when systems of healthcare and education work in isolation. As Luhr et al. (2023) project, these combined, family-based services are vital in ensuring that a child with disability gets the necessary support in distinct aspects of development such as cognitive development, language acquisition and in social interactions. Part C services facilitate coordination of services by a single point of entry which allows avoiding delays and providing children with the right services at the right time which is a particularly crucial factor in achieving the best developmental results.

In the case of school-aged children, integrated resources are even more crucial, since children are already coming to terms with the educational system and learning how to associate with their fellow students. Combined education, health, and social services models contribute to the creation of a condition where children can succeed in their academic and social lives. To illustrate, through multi-agency planning, education, health, and social services can be coordinated to meet the special needs of the child, when it is initiated at the point of diagnosis. Multi-agency planning would help in making sure that the educational curriculum is based on the

abilities of the child and that supportive services, including therapies and behavioral interventions, are always incorporated into the educational plan. One of the examples of structures which aid in ensuring that the children with the disability are provided with education that assists them in developing both academically and socially is Part C services and Individualized Education Programs (IEPs). These services should be coordinated in the initial stage so that children are not left to go through disjointed systems that may result in gaps and delays in services. Integrated service models in these formative years, as identified by Gréaux et al. (2023) and Tyldesley-Marshall et al. (2025) enhance positive academic performance over time and curb obstacles to social integration, so that children can have the skills to transition successfully into adult life.

### **Adulthood and Transition**

The times of transition, between school and employment, school, and adult service services, etc., are the important moments in the life of a disabled individual. These transitions may be the time of disorientation, as service and support gaps may impede the process and restrict the opportunities to live independently and achieve a successful career. Careful planning and services are possible during these periods of transition, which can assist people with disabilities in overcoming these difficulties and securing continuity of care during these periods. According to Greaux et al. (2023), transition planning plays a crucial role in minimizing the obstacles to employment and involvement of individuals with disabilities into the community. By coordinating the resources and offering them at critical point of transition, people can gain access to the education, healthcare, and career assistance they require to accomplish positive results. The school-adulthood transition is especially crucial, as this is where the difference between educational assistance being specialized and becoming generalized in terms of adult services is realized, which is not necessarily ready to address the needs of the former. Integrated planning provides a smooth transition of such transitions, and people get the support they require as they enter the adult world.

Besides, when they become adults, people with disabilities will need to deal with a new care system, including health care, vocational education, and community-based assistance. Resource models which have been designed to cause these transitions are especially efficient in assisting individuals to remain stable in their lives and enhance the quality of life. According to Tyldesley-Marshall et al., (2025), collaboration among agencies during such transition periods is crucial since there would be no individuals who are left without the resources they require. As an

example, connected, vocational rehabilitation programs, which are linked with healthcare/social services may offer the required job training, placement services, and benefits counseling, all of which would be critical in helping the individuals into the workforce. The integrated services also contribute to the reduction of fragmentation of care whereby there are no loopholes in service provision that can compromise the success of a person. Through these transitions over time, integrated resources would be able to avoid service gaps that would usually cause gaps in education, employment, and community participation.

### **When New Needs Arise**

As the disabled progress through the lifespan, new demands tend to occur which necessitate responsive and integrated care systems. As an illustration, the development of comorbid conditions, mental health emergencies or the aging process may have an enormous effect on the wellbeing of individuals with disabilities. According to Gréaux et al. (2023), when new needs appear, the integrated services provide the necessary conditions, and individuals should receive the relevant care and assistance when their situations change. Regardless of the beginning of mental health problems or the aging-related health conditions, having access to an integrated system of care, which involves the provision of multi-sector care, i.e., healthcare, social services and education is critical to staying independent and healthy.

To take an instance, when a person with a developmental disability has a mental health crisis, an integrated system, which integrates primary care, behavioral health services as well as community support services, is able to offer a response in time, which will reduce the effects of the crisis. Correspondingly, with ageing, people with disabilities can have integrated services which can guarantee that they still receive any assistance in activities of daily living, medical, and career services which keep them active in the workforce, and in their communities. The need to integrate services to avoid worsening health or quality of life is further highlighted by transition reviews centered on mental health and access to healthcare. Consequently, the services integration should not be intermittent but should be sustained and the cases reviewed and coordinated periodically through the lifespan of an individual so that the right care may be delivered at the right time regardless of the stage of life in which such an individual may be.

The introduction of integrated resources must be as soon as possible in the life of a person in the most extreme case, at infancy, to achieve maximum results of development and independence in the future. The family-oriented approaches and multi-agency planning are very constructive to early childhood and school-aged period where children with disabilities are offered with a complete system of support to facilitate academic achievements and social inclusion. Also, when one grows up into an adult, integrated planning becomes critical to maneuvering through workplaces and continuously socializing life. In the light of new demands that arise, integrated services become especially important in responding to the demands and offering perpetual assistance to the lifetime of an individual. Integrated resource models lead to the success, independence, and wellbeing of people with disabilities by ensuring that they are not abandoned to themselves without the support they need and hence, continuity of care and systemic collaboration.

## **Chapter 3**

### **Literature Review**

Service-learning and integrated resource models are recent models of transformative practice for people with disabilities, yet the literature exhibits uneven empirical rigor, conceptual ambiguity, and unresolved theoretical tensions that should be critically reviewed. Overall, in education, rehabilitation, and the community, service-learning is often described as a holistic pedagogical approach that can promote academic engagement, social inclusion, and civic participation among individuals with disabilities (Olnes, 2008; Garwood et al., 2023). Similarly, the integrated resource models are positioned as a means of reducing service fragmentation and improving access to coordinated services in education, healthcare, employment, and community life (Balogh et al., 2016; Kaiser et al., 2022). Despite these promising statements, the definition, operationalization, and measurement of transformation are highly inconsistent, raising questions about the rigor, consistency, and permanence of the recorded outcomes.

The objective of this chapter is to review critical literature rather than the descriptive account of the past. In line with the instructors' reviews, the review critically analyzes previous studies to identify methodological strengths and weaknesses, conceptual inconsistencies, and gaps in the evidence synthesized, with a view to further developing a more advanced perspective on service-learning and integrated resource models for people with disabilities. Rather than listing the findings, the present review will critically evaluate how such models have been conceptualized, implemented, and tested in the literature, and, more specifically, with respect to methodological consistency, theoretical consistency, and their transformative impact (Eidson e

al., 2018; Garwood et al., 2023). This way, one can doubt claims about power, inclusion, and autonomy rather than treating them as the logical results of participation.

The review includes 15 academic sources that address education, occupational therapy, rehabilitation, healthcare, policy, and technology-driven studies to depict the interdisciplinary theme of service-learning and integrated support systems. These include qualitative case studies, systematic and scoping reviews, meta-methodological reviews, and policy-oriented syntheses that examine the outcomes of people with disabilities across various periods of their lives (Eidson et al., 2018; Hunt et al., 2022; Luhr et al., 2023). As qualitative and review-based design is a relatively convenient source of information about participants' experiences and how the program was implemented, its widespread use also raises concerns about the generalizability and consistency of the outcome measure and the ability to access longitudinal evidence readily (Eidson et al., 2018). To critically interpret the reported benefits, identifying these limitations will help pinpoint the areas where empirical development is lacking.

The synthesis of the literature provides the means through which structural and conceptual problems restrict the transformative power of service-learning and integrated resource models. The literature tends to consider educational, healthcare, vocational, and community support services independently, which contributes to fragmented perspectives on how coordinated services occur across development stages (Garwood et al., 2023; Styczen et al., 2024). Also, most outcomes will be conceptualized narrowly, based on short-term academic interests or job preparation, and will not better capture broader indicators of autonomy, identity development, longer-term community engagement, and quality of life (Kinsella & Hollins, 2022; Luhr et al., 2023). This literature review concludes that further integrated, methodologically

valid, and lifespan-oriented methods are required to address these trends effectively, which positions the present study within the current academic debate on issues of inclusion, change, and equity for individuals with disabilities.

### **The Intersection of Service- Learning and Integrated Resources**

Service-learning and integrated resources are overlapping ideas that result in a successful and comprehensive approach to addressing the needs of people with disabilities in a multifaceted manner. Service-learning by design is community-based, it enables the students to be capable of connecting academic knowledge to the practical one as well as the available resources are installed to have the necessary support mechanisms, i.e., education, healthcare, and vocational services, in place, to meet the diverse needs of people with disabilities. Eidson et al. (2018) and Winter (2023) found that, when combined with other resources, self-efficacy, development of leadership, and personal empowerment are also contributed by service-learning. These integrated approaches provide a person with disability an opportunity to do significant community service and enhance social skills and professional competencies.

This integration can not only help with the learning and acquisition of skills but also gives an inclusive atmosphere that enables not only academic success but also social inclusion such that people with disabilities will be provided with resources and support needed to thrive. Even service-learning will have a concrete benefit to the community when it is enacted in an integrated resource model. Such programs are usually incorporated into the community integration framework, whereby disabled people can receive a blend of medical care, job training, and education facilities.

Service-learning, combined with healthcare and vocational resources, will help students with disabilities to obtain practical, direct experience that will provide the required support to achieve academic and social success. In this way, students have an opportunity to engage in community service activities as well as gain personalized assistance that would meet their

learning, health, and social needs. Service-learning programs are also beneficial as they can be used to make students with disabilities more inclusive so that they can develop the required skills and self-confidence in the future to be employed and participate in social life.

Moreover, service-learning as a unified resource offers an avenue to cross-sectoral cooperation, in which educational institutions, care providers and community organizations collaborate to assist the students with disabilities. This partnership model is one in which students are offered the holistic support they require, that is, they are not just targeted at the academic needs but also physical, emotional, and social needs. Service-learning allows the students to benefit by working on issues that are related to the real world and students can acquire more experience in problem-solving and teamwork as well as teaching leadership skills.

This combination of learning with direct involvement in the community leads to a keen sense of civic responsibility that is especially critical in students with disabilities since they will feel empowered to become productive members of the community. The synergistic characteristic of service-learning, in the setting of integrated resources, is bound to lead to empowerment so that people with disabilities become empowered with the skills and confidence to operate in most social and vocational environments.

Empirical research continues to point out that the integration of service-learning and integrated resources is a crucial factor in the outcomes of students with disabilities, especially regarding vocational success and social inclusion. As an example, a study by Boot et al. (2018) highlights the importance of integrated assistive technologies (AT) to serve a population with disabilities by increasing their access to community-based learning and vocational training. AT

technologies like speech recognition software and screen readers make sure that students with disabilities can be able to engage in service-learning activities to the fullest level especially in the educational and work-related settings where the technologies are required to be used. Being incorporated into the larger service-learning system, AT enables not only facilitating learning but also allows the students to learn how to communicate with each other, work on projects, and engage in the community service without any technological restrictions. This will make the whole service-learning experience more accommodative and effective in the end which leads to better academic performance and social interaction.

Service-learning and support resources also work together to increase the employment opportunities of students with disabilities. Through vocational training coupled with community service students are not only imparted with the theoretical knowledge that is required of them but also the practical experience which adds to their employability. Service-learning programs can also put students into practical work environments, which can provide them with practical experience, job coaching as well as the critical soft skills that they need to succeed in the work setting. The abilities that are required to ensure that one gets and keeps a competitive job include time management, teamwork, and communication. Eidson et al. (2018) explain that these joint programs can equip students with disabilities with the possibility to practice their skills in a favorable environment and, therefore, help them to feel confident and experienced. Combining vocational resources services, which include job placement and mentoring services, into service-learning programs also help in ensuring that students are better equipped to join the workforce and the transition between education and employment would be successful and smooth.

It is also inferred based on empirical data that service-learning programs that embrace integrated resources promote social inclusion. Students with disabilities participate in community-based projects hence they get to meet their peers, mentors, and members of the community and this helps to lessen the stigma that is normally attached to disabilities. Winter (2023) emphasizes that such experiences encourage positive views about people with disabilities and make the community at large more socially embracing of people with disabilities. Also, service-learning gives the students the chance to acquire people skills like conflict management, listening skills and empathy which is essential in the formation of meaningful social interaction. Students are not only able to create a feeling of belonging when they interact with different people but also help create a culture of inclusiveness and respect. The interactions allow building a climate in which students with disabilities feel appreciated and acknowledged in their contributions to the community, resulting in a rise in the number of social capital and improved mental health outcomes.

Service-learning and combined resources have the point of convergence that offers a complete and all-inclusive model with a significant impact on the person with a disability. With the fusion of the community engagement strengths with vocational training and support services, these programs can provide students with a broad set of skills, as well as an opportunity to have practical experience, which will help them in future employment and social integration. Empirical studies have confirmed the premise that service-learning in combination with supportive technology and vocational rehabilitation can improve academic achievement, for vocational success, and communal participation of students with disabilities. All these models combined can not only meet the needs of students with a wide range of needs but also help to

make them fit society to the fullest so that no obstacles to inclusion can be raised and more chances of becoming self-sufficient and self-advocating are provided. In this way, this intersection as a means of creating a more inclusive and equitable society is an effective one.

### **Service- Learning Outcomes: Evidence and Limitations**

Service-learning has received extensive research attention as an inclusion pedagogical intervention for people with disabilities, and its findings are documented as favorable in social, emotional, and academic realms. However, these findings should be interpreted with caution, given the limited methodological rigor and scope. Service-learning has been associated with increased student engagement, increased self-concept, and increased prospects for meaningful learning in both K-12 and postsecondary settings (Olnes, 2008; Garwood et al., 2023; Winter, 2023).

At the same time, literature reviews have raised critical issues, claiming that the strength of these conclusions is low due to small sample sizes, limited intervention periods, and overreliance on qualitative self-report data (Eidson et al., 2018). This section presents a critical discussion of the strengths and weaknesses of reported service-learning research studies, with special attention to the definition, measurement, and interpretation of service-learning research outcomes at various levels of development.

### **Reported Benefits of Service-Learning**

Service-learning in educational settings is never other than associated with positive social, emotional, and academic outcomes of people with disabilities, but they should be interpreted in the context of poor methodology. The first qualitative study reveals that service-learning may be effective in motivation, confidence, and purpose among students with disabilities. A case study that was conducted by Olnes (2008), who had studied five students with disabilities in a sixth-grade inclusive classroom, found that service-learning projects related to more motivation and self-confidence, social and civic awareness. The author has also reached the conclusion that service-learning projects seem to be a useful tool for improving the motivation and the academic success of the students, their social functioning, and their self-confidence, and also stated that the students felt more motivated when they did not need to think about themselves alone but about their role in this world. These findings suggest that service-learning can provide powerful settings where students with disabilities can perceive themselves as active, as opposed to passive, consumers of instruction.

Such conclusions are supported by even more recent syntheses but extend the range of the reported results. Garwood et al. (2023) discovered uniform social-emotional gains and civic advantages among many different settings in the systematic review of the studies examined on the experiences of K-12 students with disabilities engaged in service-learning. The reported results included improved peer relationships, motivation, and self-confidence, as well as an increased sense of belonging because service-learning activities were adequately integrated into instructional aids. The authors indicated that motivating opportunities to acquire and implement a vast number of academic and functional life-related skills in service learning are common in in-

service learning, which is a flexible approach in pedagogy. By integrating the studies conducted by peer-reviewed articles and dissertations, Garwood et al. (2023) add to the empirical data regarding how service-learning can enhance the engagement and participation of students with disabilities.

To reinforce the results, Winter (2023) identifies the alignment of service-learning to the individualized education program (IEP) goals and standards. Winter develops an argument concerning the advocacy of the requisite educational results in the domains of social communication, executive functioning, emotional regulation, and collaborative skills, and enhancement of the academic engagement and academic achievement in a narrative synthesis of the research and policy-related reports. More importantly, Winter underlines that reciprocity is a descriptive feature of inclusive service-learning by stating that the benefit of service-learning is its reciprocity in the sense that there is the giving and receiving between community and students (p. 21). Such emphasis on two-way gain aligns with the principles of inclusive education and is contrary to the models where the service providers are the students with disabilities only. In sum, these articles offer a compelling argument for the short-term beneficial effects of service-learning to promote interactions, competence-building, and inclusion.

Even though these were promising findings, close attention should be paid to the methodological aspect of literature. Among the most significant strengths of the service-learning research is the fact that the latter has been undertaken via qualitative, rich research methodologies, e.g., student reflections, interviews, focus groups, and naturalistic observations, which anticipate the voice of the participant, as well as the contextual detail (Olnes, 2008; Garwood et al., 2023). The techniques are particularly productive in disability studies, where

they lived experience and the subjective meaning of the term 'inclusion' are crucial for insight into inclusion and participation. These advantages, though, are subject to constraints. The sample size is normally small, as in the case of the study by Olnes (2008), where he used only five students and interventions, though they are quite short in the sense that one cannot draw a conclusion about the long-term implications. Moreover, there are few studies that contain comparison groups or standard outcome measures, which restrict extrapolation of the findings. These studies show only short-term benefits because they use short-term qualitative designs, a weakness that Eidson et al. (2018) note in their meta-methodological review.

### **Development Narrowing Across Educational Stages**

Service-learning outcomes for students with disabilities are employment-oriented rather than focused on the overall development of the student as they progress from elementary to postsecondary environments. Service-learning is usually perceived as an instrument of identity formation, civic engagement, and social identity in elementary and middle school. Such outcomes are the purpose, motivation, and connection to the community; Olnes (2008) underscores the need to make students with disabilities feel like essential members of the community. These preliminary findings align with developmental goals related to self-concept, social engagement, and civic identity, i.e., service-learning can be used to promote healthy development among younger age groups.

On the other hand, post-secondary and transition-oriented service-learning programs tend to focus more on employment-based skills. Kinsella and Hollins (2022) conducted a qualitative pilot study investigating a service-learning peer mentoring program grounded in transformative learning theory, pairing occupational therapy students with young adults in a postsecondary transition program with intellectual and developmental disabilities. The findings revealed that respondents with disabilities gained employment preparation, communication, coping, and self-advocacy skills. Even though these outcomes are necessary for successful adulthood transitions, the authors note the limitations in skill development, as they argue that there is too much emphasis on work and not enough on general life skills, such as money management and living independently. This decline in results is a sign of shifting priorities as people with disabilities enter the workforce.

This shift in direction is a symptom of the system-wide patterns in the provision of disability services that place greater emphasis on labor inclusion and less on independent living, community identity, and quality of life. Luhr et al. (2023), in their systematic review of the supported employment services in Medicaid home- and community-based services, remark that the policy and funding frameworks tend to focus on service delivery more than on overall outcomes. As a result, the use of service-learning and transition programs may be excessively concerned with employability indicators, which may have some adverse implications on other facets of adult life. Critically, such a minimization reflects structural and policy priorities and not the overall needs and aspirations of learners.

Together, the evidence discussed above suggests that, despite the many benefits of service-learning at every stage of learning, the ability to transform it is limited due to the developmental fragmentation and outcomes narrowing. The initial phases of service-learning are identity, belonging, and civic contribution-based interventions, whereas later interventions are based on employment preparation, but not in relation to other aspects of life. The trend emphasizes the need to have life span integrated models that are holistic in their nature of participation, autonomy, and inclusion into the community during different developmental stages. Without this kind of integration, service-learning will be functional but not transformative, which is why it is urgent to reconsider the outcomes and ensure that they can capture the multifaceted and life-long experience of people with disabilities.

### **Empowerment Versus Disablism: A Central Theoretical Tension**

Service-learning has also been criticized as promoting a deficit-based narrative, though there were positive outcome arguments; the literature between service-learning and empowerment and disablism has continued. Although there are sufficient researchers interested in inclusion, participation, and individual growth of people with disabilities, some of them also condemn the danger that service-learning can never achieve the goals of overcoming power imbalance unless it is premeditated. This battle is based on whether people with disabilities are to be active or passive participants in service-learning programs. This distinction is important to understand since the transformative quality of service-learning is not in participation, but in roles, relationships, and meanings generated because of the experience.

The implicit criticism of service-learning can be found in the groundbreaking dissection of the service-learning problem by Gent and Gurecka (2001), who accuse mainstream practice of the service-learning phenomenon that tends to put people with disabilities in the position of charity as the primary receiver. The authors indicate that traditional models of service-learning are inclined to reinforce commonplace stereotypes and cause increased disabilities using already existing literature, media presentation, and theoretical position (p. 36). To be more specific, in situations when students without disabilities serve people with disabilities, they may find themselves in a dependent, childish, or needy position. As Gent and Gurecka note, such representations will always be used to reinforce social prejudices rather than foster a factual understanding of equality. Their writing does not feature empirical findings, but the conceptual critique of the ideas that they make is formidable in the way that it anticipates the ethical and representational consequences of the design of service-learning.

The core of the analysis of the issue of participation that is proposed by Gent and Gurecka (2001) is the distinction between participation and the idea of empowerment. The authors acknowledge that service-learning typically includes the key components of learning or preparation, service, reflection, and celebration (p. 37), but they assert that they cannot be enough to guarantee the inclusive or empowering outcomes. When decisions are not made, when they are not in the forefront or in the position of reciprocating roles, people with disabilities are not included in service-learning; this reproduces these hierarchical relationships, which prove to be beneficial to the nondisabled students. The criticism is particularly applicable in the educational context, where disability is introduced in the framework of the deficit-oriented paradigm, and the activities of services are not prepared in cooperation with the participants. By doing so, the analysis by Gent and Gurecka would not be as preoccupied with the outcomes themselves, but presuppositions of disability, agency, and social value inherent in the service-learning models.

On the other hand, the most recent empirical studies suggest that service-learning can be an empowering practice if people with disabilities are positioned as the providers of service rather than recipients of services. Garwood et al. (2023), in their system review of service-learning experiences with K-12 students with disabilities, discovered positive social, emotional, and civic outcomes of students with disabilities when they participated in meaningful activities in accordance with instructional supports. The authors observe that there were positive changes in self-confidence, peer relationships, motivation, and sense of belonging, and observe that empowerment was the most evident in the cases where students were given real responsibilities and an opportunity to apply both academic and functional skills. According to their findings, it is

not service-learning in general that is criticized by Gent and Gurecka, but the organization and implementation of service-learning.

In a similar vein, Winter (2023) highlights reciprocity as a feature of inclusive and empowering service-learning. Winter, in a narrative synthesis of a study on service-learning and inclusion, presents the argument of service-learning as effective due to its mutuality, as he says that the benefit of service-learning is that it is mutual in the sense that there is a giving and receiving of the same to both the community and the students (p. 21). This sympathetic framing is also a problem for the deficit-based models because it focuses on contribution, jointness, and interdependence. Students with disabilities will feel far more inclined to consider themselves competent and valued members with a service-learning design that is intended to support academic standards and individualized education program (IEP) goals, as well as address the real-life needs of the community. Winter concurs with the empirical finding; therefore, in this analysis, empowerment is implicated as the consequence of a deliberate design decision, and not necessarily the service-learning participation itself.

The confusion in literature, as the comparison of these bodies of work indicates, is not that service learning is an innovative idea, but rather that it is based on a design, i.e., reinforcement of agency or dependency. The fact that people with disabilities are put in a caring position by the service-learning is well criticized by Gent and Gurecka (2001), in case the results of the service-learning are empowering under the condition that service-learning is conducted in a way that makes people with disabilities feel that they are in control, choosing, and making a significant contribution to the community. Markedly, these latter studies provide empirical data to sustain design ideals that discourage disabling in the bid to argue that service-learning can

play a role in either undermining or upholding stigma depending on the way roles and relationships are developed.

As an academic, one cannot dismiss the critique by Gent and Gurecka as outdated thinking since it must be seen as a cautionary paradigm that continues to inform the present practice. Their discussion fails to lose any actuality in instances where service-learning lacks intended reciprocity, the voice of participants, and mutual authority. Without them, the most motivated initiatives can be influenced by the possibility of supporting discourses of shortages in the text of inclusion. Nevertheless, under certain conditions, service-learning is integrated into inclusive pedagogies, according to individualized goals, and broader support structures, it will have better opportunities to promote agency, self-efficacy, and social equity. It is against this that the necessity of the critical exploration of the outcomes, along with the ethical and conceptual assumptions of service-learning models involving people with disabilities, becomes critical.

### **Evaluation of Research Quality and Knowledge Gaps**

Meta-methodological reviews indicate that the evidence base of service-learning is characterized by a low level of design quality, absence of outcome measurement, and longitudinal data. Although the literature documents many instances of positive experiences of people with disabilities participating in service-learning, additional examination reveals that many of these findings are found on studies with severe methodological shortcomings. Research in service-learning in the education sector, rehabilitation, and other related health sectors has relied on qualitative designs, small samples, and short interventions, and has rendered it hard to ascertain the effectiveness or causation of the interventions in the long term. As a result, the evidence base, with all its potential, is not yet fragmented in its ability to substantiate claims of transformation, independence, and community views and participation in the long term.

Eidson et al. (2018) conducted a meta-methodological review of 22 studies in rehabilitation professions (which involve service learning) published between 1995 and 2016, and this is the key input to the interpretation of these limitations. In their review, they discovered that there was a significant variance in the study design, as well as the selection of outcomes and how they were measured. Even though some of the studies employed randomized controlled trials or quasi-experiments, many of them employed pre-post designs and lacked control groups, which minimized internal validity. Eidson et al. further found that among reviewed studies, only six directly checked the occupation-based outcomes, e.g., functional performance or work-related skills, yet service-learning is normally aligned to the vocational and rehabilitation outcomes. This gap implies that there is no correspondence between the stated goals of service-

learning and the most measured outcomes that pay less attention to functional change and more to attitudes and perceptions.

The findings given by Eidson et al. (2018) can be particularly applied when it is combined with the research on education-based service-learning conducted in the disabled population. To researchers such as Olnes (2008) and Winter (2023), increased motivation, confidence, social skills, and academic engagement are the areas of interest, but such outcomes are often quantified based on reflections, interviews, or observations rather than on standardized or performance-based testing. Even though these methods provide practical insights into the experiences of the participants, they do not provide much information regarding the sustainability or external validity of the findings. Eidson et al. caution that without measurement structures that are repeated and longitudinal follow-up, it will not be easy to establish whether the benefits that are observed are still being observed beyond the immediate circumstance of service-learning or that they actually lead to adult outcomes.

The Garwood et al. (2023) systematic review is an important effort to broaden the research on service-learning for students with disabilities, since it summarizes the findings of the peer-reviewed articles and research dissertations. Their analysis is also more comprehensive of the disability types and learning environments since the social, emotional, and civic gains are comparable, such as self-confidence, peer relations, motivation, and belonging. However, despite this broader inclusion scale range, Garwood et al. also welcome the same trends of methodology found by Eidson et al. (2018). Many of the studies that they included in their review were qualitative studies, lacked comparison groups, and were researching the short-term outcomes. Later, the review does not improve the capacity of the field to gauge the long-term or

transformational effect, even so the descriptive knowledge of the experiences of the subjects is improved.

There is a bias towards qualitative methods used in the past and such methodologies play a significant role in defining and measuring transformation. Confidence, belonging, and motivation are often listed as the indicators of success (Olnes, 2008; Garwood et al., 2023; Winter, 2023) but all of them are usually measured indirectly and hardly have to do with functional, vocational, or community-related outcomes. Confidence and belonging, even when relevant, cannot be considered powerful enough predictors of change without any indication of further involvement, agency, and role attainment in areas of life (Luhr et al., 2023). This weakness is particularly applicable in the background of transition to adulthood and work preparedness emphasis in the disability service sector, where the most important outcomes are living independently, full-time employment, and community inclusion.

Besides the issue of measurement, it is also revealed in literature that little attention is paid to the issue of longitudinal design. The little research that does not follow up on the subjects after the service-learning experience leaves gaps in the overall effect in the long term. This is especially difficult because disability is a lifelong process and service learning is normally established at specific points in education. Without longitudinal data, it is difficult to determine whether the preliminary rise in motivation or self-efficacy applies to further success in education, employment, or community life. The research designs that are clearly requested by Eidson et al. (2018) are those that will help to investigate the outcomes on a more extended level and integrate multiple spheres of functioning that are yet to be widespread in the existing body of literature.

Therefore, at the academic level such gaps in research methodologies need closure through shifting towards more consumptive and integrative research methodology. Bring qualitative and quantitative, performance-based measures Mixed-methods designs would allow the researcher to quantify the experience of life and change. Congruent longitudinal research that is consistent with integrated service models can assist in establishing interaction between service-learning and educational, healthcare, and vocational support in developmental transition. Moreover, the outcome frameworks would have greater homogeneity, particularly those that are in line with functional participation and quality of life, therefore, facilitating comparability of studies. Without these advances in methodology, the field would be in danger of continuing to make its exaggerated claims of the transformative nature of service-learning based on the evidence, which is so potent, failing to be methodologically well-supported.

### **Integrated Resources and Cross Sector Models**

Service-learning projects involving people with disabilities are implemented as components of broader ecosystems of support that cut across the entire healthcare, education, employment, policy, and technology sectors. Due to this, there is an urgent need to evaluate critically the transformative power of service-learning regarding the functionality of the integrated resource models at work in sectors and whether an integration in any meaningful way enhances lived experience. Another aspect that is highly encouraging in literature is the integration across the sectors since how fragmentation of the service can be solved, however empirical analysis has shown that integration may be more geared towards organization coordination than individual performance. The section provides critical analysis of healthcare and interprofessional integration, integration based on community and mobilization of policies, and the emergent technology-driven models, their potential, and their failure to contribute to sustainable involvement, autonomy, and quality of life of people with disabilities.

### **Community, Policy, and Employment Integration**

Policy-based integration models reveal systemic mal-alignment of funding on the outcomes and transformations. Policy frameworks and financing structures affect service delivery and evaluation, and, hence, integration in the community and employment systems. Luhr et al. (2023) conducted systemic review of the supported employment services in the Medicaid home- and community-based services (HCBS) and there was much variation between states in terms of service delivery and outcomes. Among the main criticisms that can be stated in their analysis, there should be the fact that the fee-for-service models will encourage the providers to offer the services but not achieve a specific result. B-7). This system of incentives lays stress on a higher volume of the service rather than the importance of work or community participation and thereby restrains the ability of the integrated strategies to be transformed.

This problem is even further shown in syntheses of national policies. The American Association on Intellectual and Developmental Disabilities (AAIDD) do reviews on personal, family, and societal outcomes in the community like community inclusion and choice. However, these reviews have been mostly premised on correlational and experimental research that evaluate the results at a systems level and offer little information on the system on how individuals experience integrated supports in practice. As a result, policy arrangements can be capable of articulating inclusion as a goal without adequately addressing the query concerning the way services are turned into lived autonomy, identity or belonging.

This conflict is also revealed in employment-oriented integration. Though the supported employment and vocational rehabilitation are associated with the higher employment rates among young adult people with disabilities (Luhr et al., 2023), the obtained outcomes

overshadow other valued adult roles, such as the community membership and living independently. It follows the same pattern as the narrowing of service-learning in literature since the outcomes are reduced to workforce readiness at the expense of a holistic life-course development. More to the point, such a constriction is policy and investment regimes structural priorities over the diverse ambitions of people with disabilities. Without the compatibility between the policy motives and individualistic outcomes, integration is likely to assist in the improvement of compliance-based service delivery as compared to empowerment.

### **Healthcare and Interprofessional Integration**

Service-learning projects involving people with disabilities are implemented as components of broader ecosystems of support that cut across the entire healthcare, education, employment, policy, and technology sectors. Due to this, there is an urgent need to evaluate critically the transformative power of service-learning regarding the functionality of the integrated resource models at work in sectors and whether an integration in any meaningful way enhances lived experience.

Another aspect that is highly encouraging in literature is the integration across the sectors since how fragmentation of the service can be solved, however empirical analysis has shown that integration may be more geared towards organization coordination than individual performance. The section provides critical analysis of healthcare and interprofessional integration, integration based on community and mobilization of policies, and the emergent technology-driven models, their potential, and their failure to contribute to sustainable involvement, autonomy, and quality of life of people with disabilities.

### **Technology-Enabled Integration**

The digital and assistive technology models fail to check disability-led and participatory outcomes comprehensively although they can be scaled. The combination with technology is becoming more appealing as one of the means of arranging the services, improving access, and personalizing the supports in the different fields. Namoun et al. (2023) also conducted a systematic literature review of the service composition models of disabled people and found that models of accessibility, semantic technologies, and digital service ecosystems are becoming increasingly relevant. The taxonomy that they have proposed gives more attention to innovation when describing the service, interaction, and runtime composition. Nonetheless, all the reviewed studies focused more on the technical feasibility rather than on the user experience or the results of the participation.

Another instance of potential and constraint is new combined platforms that have been developed in 2024 through to 2025. Preliminary pilot studies of multi-component systems involving personalized content, healthcare tracking, and communication with a caregiver suggest that there are augmented continuity and responsiveness of care. Nonetheless, they are very preliminary and quite small-scale studies, which rely on usability testing in the short term and expert reaction instead of longitudinal and disability-oriented evaluation. This, therefore, poses a threat to the integration of technology to follow the same patterns of healthcare and policy models wherein the systems are said to be effective due to their functionality, not power, or sustainability of ongoing involvement.

Importantly, critically, one should understand technology as an enablement and not a solution on one's own. The digital integration is the ability to make the top-down service

delivery stronger rather than those without the disabilities to be handed to them without their contribution as co-creators and participatory design processes. The literature suggests that there is a clear void, thus, because technology offers unique cross-sector coordination opportunities, the transformative potential remains un-theorized and even un-quantified in relation to the lived experience, identity, and community participation.

### **Lifespan and Transition Perspectives**

Consistency in the literature suggests that service-learning and integrated supporting strategies are used in an episodic manner, yet disability is a lifelong experience. Educational interventions, medical and communal interventions, are frequently targeted at occasions of development that are most eminent during elementary education or with the initiation into the workplace as opposed to being conceived as being a part of a lifelong responsive system. This discontinuous practice induces disjunctions that limit the accruing and transformative possibilities of already successful practices. Even though both service-learning and the integrated resources have been shown to produce overwhelming positive short-term results, the absence of continuity across various life stages cultivates severe problems, which raise concerns of sustainability, skill training, and long-term activity of people with disabilities.

Early intervention and school-based services are the most developed level of integrative support in literature. Studies on educational service-learning (e.g., Olnes 2008), such as studies on the initial benefits in motivation, self-confidence, social skills, and civic participation including students with disabilities in meaningful and curriculum-relevant service experiences have been pointed to. The former interventions are often incorporated into general classrooms and relate to the assistance of individualized education plans (IEPs), according to which an academic goal can be matched with the practice (Winter, 2023). However, as even in the early educational contexts, the service arrangements are robust, there is a lack of literature on the sustainability or even continuity of such rewards beyond the early educational environment. The shift of the structured school-based supports to less coordinated adult systems as a process has not been investigated properly.

The literature indicates increasing breakdown between service systems as disabled individuals move to adolescence and adulthood. This transformation may be described by Kinsella and Hollins (2022) who focus on their postsecondary transition services where service-learning is tautologically connected with being job-employment-prepared, self-advocacy-skilled, and having job skills. Despite these advantages, the authors acknowledge that too much attention has been paid to employment at the cost of bigger aspects of life such as living independently and managing finances. There were narrowing of this kind, as systemic priorities in adult disability services that outcomes are mostly decided by workforce participation rather than overall quality of life. Consequently, service-learning, and integrated resources are interventions that are task-oriented as opposed to long-term developmental support.

The adult service partitioning is also further promoted by the policy and funding systems that isolate the support of the above-mentioned sectors. Luhr et al. (2023) demonstrate that the employment services offered by Medicaid home-and-community based services are stipulated by the models of the fee-for-service, according to which the key focus is on the delivery, and not on the long-term results. Similarly, systematic reviews of AAIDD are based on the general outcome areas, such as community inclusion and choice, although there is not much information on how the people perceive continuity of support in adulthood. The inability to connect the intentionality at policy levels and the experienced experience points to a gap in literature: integrated resources have been scarcely addressed in terms of different life stages with regards to the same conceptual framework.

Another implication of discontinuous episodic support models is raised in the global views as well. Hunt et al. (2022) conclude that access, coordination, and continuity of lifespan

services are important gaps in the continuum in a scoping review of the community support of people with disabilities in low- and middle-income countries (LMICs). Even though community-based support and associations of persons with disabilities (OPDs) are vital in information dissemination and peer network provision, the authors can note that formal strategies have minimal documentation history and are not critically appraised. They discovered that information on the practices is hazy, no serious documentation of the implementation practices, scale, and impact (Section 5.6). The findings are consistent with the concerns raised in the more affluent communities, and thus it can be stated that lifespan fragmentation is not a localized anomaly, but a global issue.

The most significant ramification of this literature bulk is that it is impossible to achieve transformation through isolated interventions alone. The discontinuity between life stages undermines the transformational abilities of the otherwise effective interventions by limiting the possibilities to transfer skills and build identity and remain involved. Any gains in the personal efficacy or civil civic participation initially achieved in school-based service-learning may be lost without the adult systems providing the same opportunity to sustain the contribution and growth of the student. On the same note, interventions that are possible in later life under technology or even employment-based may not as effectively be possible in the absence of predecessors that can be processed in the combined experiences of earlier life.

Literature exudes an urgency to produce lifespan-specific models that identify methods of conceptualizing service-learning and combined resources in an interrelation rather than sequential and episodic manner. Such models would require alignment on the issues regarding early intervention, service in school age, and transition planning and adult support and outcome

measures in the long-term levels, and not at the specific points in time. Devoid of this continuity, service-learning and integrated resources can be limited in terms of generating short-term improvements, rather than processes of long-term change. This fact then serves as an indication of a systemic error: since disability is a lifelong experience, the infrastructures that are supposed to offer support to people with disabilities are not timely unified and are therefore incapable of creating long-lasting empowerment, integration, and quality of life.

According to the literature, service-learning and integrated supports are always episodically implemented as opposed to disability, which is lifelong. In education, healthcare and community-based systems interventions are often concentrated on specific points of developmental transition, particularly elementary school, or school to employment transition as opposed to perceiving them as lifelong supports that evolve as life progresses. This episodic disposition inhibits accretional influence of otherwise effective interventions through tearing learning, engagement, and personal construction. Even though both service-learning and integrated resources have potential success in supporting short-term gains, they lack long-term consistency in alignment of these strands of life at various stages of life, which makes their ability to support the long-term autonomy, inclusion, and quality of life invalid.

The most reliable stage of support that is described in the literature is the earliest intervention and school context. These outcomes of service-learning in K-12 education are always positive growth, social, and academic outcomes in case of involvement in meaningful service activities by the students with disabilities who are responsible to the curriculum (Olnes, 2008; Garwood et al., 2023; Winter, 2023). Institutional conditions, individualized education programs, and opportunities of reflection and facilitated involvement are the benefits of these

early interventions, which are stable. Service-learning, therefore, tends to foster identity development, affiliation to society and civic consciousness at this level. However, despite the compelling evidence of the short-term effects, rudimentary studies establish the connection between the experiences of early service-learning and educational or vocational and community engagement in adulthood, meaning that the matters of sustainability and transfer remain open.

The literature reveals the increased disintegration, the deteriorating service and outcome range, as people with disabilities enter adolescence and adulthood. Transition-oriented service-learning and integrated services will be driven towards preparation to work, independent living and self-advocacy and workplace instead of other domains of life such as community and relationship building (Kinsella and Hollins, 2022; Luhr et al., 2023). This tendency can be considered as a sign of systemic interests which are fixed on the adult disability services in which success is frequently defined by engagement in the labor market as opposed to the general well-being. Thus, service-learning is a short-term intervention grounded in transition planning, rather than long-term development program, which can be biased towards alteration of adult roles and identity.

The policy and funding structures cement this division into the sectors and stages of life that are divided. The community inclusion, choice, and health outcomes are the promotion of long-term services and support reviews, yet such outcomes are taken into measurement in programmatic and discrete scenarios, rather than developmental pathways (AAIDD, 20232025). The lack of mechanisms that creates continuity has the propensity of leaving individuals with disabilities in a sudden transition to a new system that leaves them without support, participation, and an opportunity to build upon the gains before it. This means that, according to the literature,

isolated points of integration cannot be extremely useful in overcoming the discontinuity of the services across the lifespan.

The research on the results of episodic support models is also international. Hunt et al. (2022) establish significant gaps in the provision of the services, their coordination, and sustainability in a scoping review of the evidence of the community supporting individuals with disabilities in lower and middle-income countries. It has been reported both formally and informally in community-based approaches and the scholars suggest that evidence levels are low and that there is no detailed description of implementation practices, scale, and impact (Section 5.6). It is important to note that those gaps are not confined to cultures that are resource-bound; they also resemble the case of higher-income systems, where lifespan fragmentation is a structural phenomenon in general, and not due to local inferiority.

The continuity of stages of life is missing in any setting, which eradicates the transformative quality of otherwise effective interventions. The gains in self-efficacy, motivation and civic identity that had been achieved in service-learning in schools may be lost with the eventual failure of the adult systems to afford their respective opportunities of contributing and developing. Similarly, the employment-oriented interventions implemented at adulthood would be less effective unless it is based on the past experiences of agency and participation. The theoretical conceptualization of transformation that is applied in the literature is long-term exposure and maintenance of the contexts and not one encounter with supportive practices.

More importantly, the literature suggests that there is a dire need to possess lifespan-oriented frameworks that would speak service-learning and integrated resources in development

transitions. These frameworks would theorize disability supports as cumulative and dynamic, and where results are reviewed over time, and not at points. Without this orientation, service-learning and built in supports will be just temporary inflations rather than a long-term process of effective empowerment. This fact therefore leads to one of the main contradictions which reveal that, even though disability is universally recognized as lifelong, the mechanisms that exist to support the disabled persons are intermittent, sporadic, and not coordinated well enough to provide any sustainable transformation.

### **Synthesis Gaps and Positioning of Current Study**

Thematic synthesis has revealed that literature lacks an integrated, lifespan-oriented, and theoretically grounded model capable of sustaining transformative outcomes among people with disabilities. Although the service-learning and integrated resource models are the actively promoted items in the education, health care, employment and community sphere, the reviewed papers reveal the conceptualization, implementation, and evaluation fragmentation. The beneficial outcomings in terms of trust, membership and learning a skill are always reported (Olnes, 2008; Garwood et al., 2023; Winter, 2023) but often in a narrow scope with a time-focused undertaking. As a result, the field has been able to produce a respectable description of short-term benefits descriptive outcome without elaboration of how it accumulates, transfers, or persists at the various levels of development.

Among gaps, the most conspicuous gap concerns the absence of longitudinal evidence, which can be able to trace the results across the lifespan. The meta-methodological and systematic reviews point to the fact that the studies of service-learning are all premised on the short-term qualitative methodology with a small sample and lack of the follow-up type of assessment (Eidson et al., 2018; Garwood et al., 2023). Even though these designs are suitable in the collection of lived experience, they cannot be applied to observe long-term change in other aspects of employment security, independent living, or long-term community a part of the community. This is augmented by episodic nature of interventions that are usually confined to certain phases of education or transition. The studies of early gains in motivation or self-efficacy are not conclusive unless they have longitudinal designs to determine the continuity or change over time whether the gains will have a significant effect on the adult outcomes.

The second critical gap is critical cultural responsiveness and contextual diversity gap in evidence base. Most of the literature leans towards Western settings of high income, little is considered to cultural difference in the conception and practice of disability, service, and community participation. Hunt et al. (2022) state that this is one of the limitations of the scoping review of the community support in the low- and middle-income countries; gaps in access, documentation, and evaluation of community-based strategies are high. Even though the authors mention the significant role played by the organizations of people with disabilities in advocacy and peer support, few rigorous pieces of evidence on the implementation and its consequences are available. This lack of culturally responsive research limits the generalizability of the existing models and the need for approaches that would be used in diverse social, cultural, and economic environments.

A third underdeveloped field throughout literature is participant-led design. One of the criticisms cautions about the circumstance that service-learning may replicate deficit-based discourses in the meaning that the individuals with disabilities are placed in the position of recipients, as contrasted with co-creators and leaders (Gent & Gurecka, 2001). Despite the presence of more recent studies that pay attention to reciprocity and contribution (Winter, 2023; Garwood et al., 2023), the level to which people with disabilities affect the goals of a program, program activities, or the assessment criteria is scarcely researched. In turn, the level of empowerment is often determined, rather than represented, by the outcomes of the process by the end. This lack is particularly consequential bearing in mind that all three (inclusion, self-determination, and agency) are mentioned in the field.

One more weakness relates to integrated domain-based outcome measurement. Such functional, vocational, or communal measures are usually evaluated independently of the social-emotional outcomes and, therefore, the data are fragmented and do not reflect the interdimensional nature of transformation. Eidson et al. (2018) assert that a minor portion of the studies in service learning in rehabilitation professions measure occupation-based outcomes despite the outcome of occupation and its role in adult autonomy and participation. Similarly, the integration of the structure and system level is prioritized in the healthcare and policy-related reviews where there are inappropriate relations with the lived experience (Balogh et al., 2016; AAIDD, 2023/2025). Absence of embedded frameworks of outcomes limits the possibilities of the field to assess whether sector to sector coordination will result to person centered and meaningful change.

To fill those gaps, the existing research paper is positioned in a way that it would help fill various distinct contributions to literature. To begin with, it also advances the integrated strategy that directly examines the intersection of service-learning and integrated resources (not parallel or independent interventions). The paper addresses fragmentation that has been the primary feature of most of the available studies by conceptualizing service-learning as a part of larger systems of educational, healthcare, vocational, and community support. Such an integrative framing can be linked to pressure on cross-sector models, which cannot be based on structural coordination but individual outcomes and lived experience (Kaiser et al., 2022; Luhr et al., 2023).

Second, the study is based on transformation as a visible construct and not a consequence of participation. This literature is also extremely specific to prediction of transformation as a

multidimensional process of predicting identity, agency, participation, and continuity among locales unlike most of the literature which employs proxy measures e.g., confidence or belonging. It can counter critique that change is said but seldom realized in terms of operationalization in service-learning studies (Eidson et al., 2018). The research contributes theoretical clarity to a discipline where the use of theory is implicit and inconsistent by aligning theoretical frameworks and domains of outcome.

Finally, the study also addresses the lifespan continuity by referring to the fact that service-learning opportunities and integrated resources could be planned to use the developmental stages. It does not focus on early intervention or transition to work as it describes the service-learning in context of life-course perspective in which disability is approached as a lifelong process. This position is premised on the fact that the studies of discontinuities between life phases nullify the transformative power of otherwise useful interventions (Hunt et al., 2022; Luhr et al., 2023). The study seeks to add more literature to the existing body of knowledge on episodic success to long-term inclusion and empowerment, based on the focus on continuity, participation, and long-term engagement. Combined, these reviews point to the fact that longitudinal, culturally responsive, participatory, and integrative studies are needed, both in research design and measurement. The key to the reconciliation of these loopholes is the formation of service-learning and integrated resource models into potential practices that can be developed into the concept of evidence-based strategies that have the potential to generate transformative outcomes across the lifespan.

### **Summary of Literature Review**

The service-learning and integrated resource models are invariably associated with the valuable social, emotional, and educational outcomes of the persons with disabilities across the entire range of literature in question; however, their potential to produce the long-term transformative effects is limited due to the methodological, conceptual, and structural constraints. It is also known that they are more motivated, self-confident, a part of a group, and develop skills, yet these are known to be founded on the short-term qualitative designs that are not sustainable eventually or in developmental trends. Moreover, the transformation is normally implied by proxy indicators and not specified explicitly and can be measured using constructs that are theoretically grounded. Structural analyses further demonstrate that the measurements of cross-sector integration are usually founded on organizational coordination or efficiency of services in contrast to the lived experience indicator, agency, and participation. In service-learning where the mutual is never reciprocated, and where systems based integrated resources assume a precedence over individuals, interventions are risky in the consolidation of the fragmentation or deficit discourse no matter the good intentions behind being inclusive.

Collectively, literature underscores the fact that there is need to have more coherent, rigorous, and lifespan-oriented approaches to the understanding of service-learning and the integrated resources to people with disabilities. The research designs, which should be conducted to address the known gaps, should extend beyond the situation with single stages of education and explore the effect over time to quantify all the influence through the prism of mixed-methods and longitudinal studies. The other thing is to understand how to develop combined outcome models which can incorporate social-emotional development with both functional and vocational

development and community-based activities such that a claim of transformation would reflect meaningful and long-lasting change. Culturally responsive and equity-based approaches are also needed in ensuring equity and avoiding recreation of the hierarchical service structure. The research methodology adopted in the following chapter is well-conceived to respond to these requirements by treating the service-learning and integrated resources through a person-centered and lifespan-explaining framework. Through this, the study will assist in bringing empirical transparency to a field of study that has so far been proven but lacks heavily weighted evidence to facilitate the practice of transformation.

### Literature Review Tables

The table below provides information of a critical literature review.

Table 2. Summary of Literature Review Table

Author(s)	Year	Title	Methods	Major Findings
<b>Olnes, L.</b>	2008	Special Projects for Special People: Students with Disabilities Serve Others through Service-Learning Projects	Qualitative case study of five sixth-grade students with disabilities in an inclusive elementary classroom; data collected through pre/post student surveys and interviews with parents and teachers	Service-learning positively influenced students with disabilities by increasing motivation, self-confidence, social skills, academic engagement, civic awareness, and sense of purpose.
<b>Kinsella, A. T., &amp; Hollins, N. R.</b>	2022	Using a Service Learning–Peer Mentoring Project to Prepare OT Students for Their Role in Post-secondary Transition Services	Qualitative pilot program evaluation grounded in transformative learning; data from online discussion prompts and a virtual focus group involving OT students and young adults with IDD	OT students developed greater awareness of diversity and systemic barriers, while students with IDD improved employment readiness, communication, coping, and self-advocacy skills; noted limitations included narrow emphasis on employment outcomes.
<b>Garwood, J. D., et al.</b>	2023	The Experiences of Students with Disabilities Actually Doing Service Learning: A Systematic Review	Qualitative systematic review of peer-reviewed studies and dissertations using interviews, focus groups,	Service-learning participation yielded positive social, emotional, civic, and motivational outcomes, including enhanced self-

			observations, and student reflections	confidence, peer relationships, and sense of belonging when appropriately scaffolded.
<b>Winter, C. M.</b>	2023	Promoting Inclusion for Students Through Service-Learning (Master's thesis)	Narrative synthesis of peer-reviewed research, policy documents, and theoretical frameworks related to service learning and inclusion	Service-learning supports academic standards and IEP goals while enhancing collaboration, responsibility, engagement, social communication, executive functioning, and emotional regulation.
<b>Gent, P. J., &amp; Gurecka, L. E.</b>	2001	Service-Learning: Disservice to People with Disabilities?	Qualitative critical analysis of service-learning literature and examples	Traditional service-learning may reinforce stereotypes and disability by positioning people with disabilities as passive recipients rather than empowered participants.
<b>Eidson, C. A., et al.</b>	2018	Methodological Quality of Service-Learning Studies in Rehabilitation Professions	Meta-methodological systematic review of 22 service-learning studies (1995–2016)	Identified methodological weaknesses and limited occupational focus in service-learning research; emphasized need for stronger designs and outcome measures.
<b>Balogh, R., et al.</b>	2016	Organizing Healthcare Services for Persons with an Intellectual Disability: A Systematic Review	Systematic review of seven randomized controlled trials evaluating healthcare organizational interventions	Evidence for effective organizational interventions was limited; most studies focused on mental and behavioral health rather than physical health outcomes.

<b>Styczen, L. M., et al.</b>	2024	Interprofessional Collaboration for Children with Physical Disabilities: A Scoping Review	Scoping review of 29 studies following structured scoping review methodology	Identified communication, professional knowledge, role clarity, and organizational culture as key facilitators of effective interprofessional collaboration.
<b>Kaiser, L., et al.</b>	2022	Interprofessional Collaboration and Patient-Reported Outcomes: A Systematic Review	Systematic review using PRISMA guidelines of 22 studies (RCTs and non-randomized designs)	Interprofessional collaboration was associated with improved quality of life, coping, functionality, satisfaction, health status, and therapeutic relationships.
<b>Castro-Kemp, S., et al.</b>	2022	Cross-Sector Collaborative Practices in Provision of Services for Children with Special Educational Needs	Scoping review of eight international empirical studies using Arksey and O'Malley's framework	Effective collaboration included education–health–social care partnerships, joint meetings, school-based clinics, and interdisciplinary and transdisciplinary models.
<b>Hunt, X., et al.</b>	2022	Community Support for People with Disabilities in Low- and Middle-Income Countries: A Scoping Review	Scoping review of peer-reviewed and grey literature across 48 LMICs, incorporating qualitative, quantitative, and mixed-methods studies	Identified significant gaps in access to community supports; highlighted the critical role of organizations of persons with disabilities (OPDs) and lack of rigorous evidence on implementation and impact.
<b>AAIDD et al.</b>	2023–2025	Outcomes for Adults with Intellectual and Developmental	Systematic review of U.S.-based studies (1981–2022) using	Outcomes aligned with AAIDD and HCBS quality frameworks,

		Disabilities Receiving Long-Term Services and Supports	experimental and correlational designs	emphasizing community inclusion, choice, health, and personal, family, and societal outcomes.
<b>Luhr, M., et al.</b>	2023	Supported Employment Services for People with IDD in Medicaid HCBS	Systematic evidence review of quantitative and qualitative studies on supported employment within Medicaid HCBS	Found variability in service delivery and outcomes; supported employment associated with higher employment rates, though policy and funding structures may limit outcome-driven practices.
<b>Namoun, A., et al.</b>	2023	A Systematic Literature Review on Service Composition for Disabled People	Systematic literature review using Kitchenham’s methodology of peer-reviewed ICT-focused studies (2010–2022)	Identified accessibility, service composition models, and developed a seven-facet taxonomy addressing users, services, interaction, and runtime aspects.
<b>Papadogiorgaki et al.</b>	2024–2025	Integrated Support Systems for People with Intellectual Disabilities	Developmental pilot evaluation of a multi-component integrated digital support platform using mixed qualitative methods	Integrated systems improved care continuity, usability, personalization, emergency response, and caregiver involvement, though systemic barriers such as service silos and training gaps persist.

## Chapter 4

### Statement of Problem

Service-learning opportunities and access to integrated resources are essential components in supporting individuals with disabilities as they transition toward independence. However, a significant gap exists in understanding how service-learning opportunities can be systematically incorporated into transition planning for individuals with disabilities. Limited empirical evidence addresses the factors that facilitate or hinder engagement in service learning and access to integrated resources that promote independence and self-sufficiency.

#### **Problem 1: Lack of Systematic Integration Service Learning in Transition Planning**

A primary problem is the absence of a systematic framework for incorporating service-learning opportunities into transition planning for individuals with disabilities. Although transition services are intended to prepare individuals for postsecondary education, employment, and independent living, service-learning initiatives are frequently implemented as stand-alone experiences rather than as intentional components of individualized transition plans. This disconnect may limit the effectiveness of service learning in promoting skill development, self-determination, and real-world readiness, thereby reducing its potential impact on long-term outcomes.

#### **Problem 2: Barriers to Accessing Integrated Resources That Promote Independence**

A second problem involves persistent barriers that restrict access to integrated community resources necessary for inclusive participation and independence. Individuals with disabilities often encounter structural, logistical, and systemic obstacles such as limited community

partnerships, inadequate accessibility, and inconsistent support services that hinder meaningful engagement in service-learning activities and related resources. These barriers may disproportionately affect individuals with higher support needs, contributing to inequities in opportunities for personal development, social inclusion, and sustained independence.

The purpose of this study is to examine the impact of service learning and integrated resources on individuals with disabilities. Specifically, this research seeks to explore how participation in service-learning activities contributes to personal development, social skill acquisition, inclusivity, and an impact-oriented outlook. Addressing this problem may help identify gaps in current practices and provide evidence-based guidance to support the expanded use of service learning and integrated resources as effective strategies for improving outcomes for individuals with disabilities.

## **Chapter 5**

### **Discussion of Findings**

The research will attempt to answer these questions by the completion of research from various sources such as the literature review and firsthand experiences and perspectives.

### **Research Questions**

#### **1. What is service learning and what diverse forms of learning opportunities are documented in literature?**

The literature identifies service learning as a pedagogical and experiential framework that integrates academic direction with meaningful community engagement, emphasizing reflection and reciprocal benefit (Bringle & Hatcher, 1995; Eyler & Giles, 1999). Different forms of service learning include direct service, indirect service, advocacy-based service, and research-oriented service learning, each offering distinct opportunities for skill development and civic engagement (Furco, 2010; Jacoby, 2015). With all these diverse types of services, learning opportunities offer a variety of experiences that can be provided to individuals with disabilities.

#### **2. What integrated resources are commonly identified as available and effective for individuals with disabilities?**

Scholarly research identifies integrated resources as inclusive, community-based support that facilitate participation across key life domains. Those integrated resources include and not limited to the following inclusive education, competitive integrated employment, accessible healthcare, independent living support, transportation, peer and social networks, and civic

participation opportunities (Hall, 2017; Shogren et al., 2015). These resources are associated with improved self-determination, quality of life, and community belonging for individuals with disabilities (Wehmeyer et al., 2019). These resources allow opportunities for families, parents and individuals with disabilities to be success stories and advocates to others to help them navigate through the next chapter of their lives.

**3. What factors, as reported in the literature, hinder the success of individuals with disabilities who lack access to service-learning opportunities and integrated resources?**

The literature identifies various barriers and individual-level barriers, including limited program availability, inadequate collaboration, insufficient accommodations, negative societal attitudes, and policy constraints (Carter et al., 2012; Trainor, 2010). Additionally, a lack of structured transition planning and reduced exposure to experiential learning opportunities often restrict skill development and community engagement (Landmark et al., 2013). From an educator and practitioner perspective these factors hinder success due to the lack of support and assistance from families, program availability due to geographical location. As well as lack of knowledge about what services and integrated resources are available.

**4. How do these factors influence the ability of individuals with disabilities to become independent and productive members of their communities?**

Research suggests that restricted access to service learning and integrated resources negatively impacts employment outcomes, social inclusion, self-advocacy, and independent living skills (Lindsay et al., 2019; Shogren & Turnbull, 2014). When experiential learning and inclusive supports are absent, individuals with disabilities face increased risks of social isolation,

economic dependency, and diminished community participation, thereby limiting long-term independence and societal contribution (Wehman et al., 2018). When individuals with disabilities reach the age of adulthood the absence of service learning and integrated resources are presented when they are interested in different opportunities to help them become more independent and societal contribution such as obtaining employment, higher education etc. These risk factors make it difficult to assist them with obtaining and maintaining these goals without the establishment of service learning and integrated resources. To ensure that the goals can be obtainable and realistic families and additional support must establish barriers to help introduce these factors to help influence and maintain the balance to achieve their goals.

Service-learning is a teaching and learning methodology that fosters civic responsibility and applies classroom learning through meaningful service to the community. The strongest service-learning experiences occur when the service is meaningfully immersed in ongoing learning and is a natural part of the curriculum that extends into the community. Service-learning is an essential strategy for providing a rigorous, relevant curriculum that prepares students to succeed in the 21st century. According to *Theoretical Foundations of Service-Learning* by Boise State, “Service learning is a form of experiential education, deeply rooted in cognitive and developmental psychology, pragmatic philosophy, and democratic theory. It shares a common intellectual history with organizational development and participatory action research (Boise State, 2023). A range informs it of intellectual traditions and value systems, of which seem to contradict or compete with one another. Service-learning theory begins with the assumption that experience is the foundation for learning, and various forms of community service are employed as the experiential basis for learning.” (Morton & Trappe 1996, 3).

As a form of experiential education, service learning is distinguished from other forms of service by its intention to benefit equally the provider and the recipient of the service, as well as by its assurance of equal focus on both the service provided and the learning that occurs as a result.

The experiential learning model we know today has been shaped over time by John Dewey (1938), Kurt Lewin (1951), Jean Piaget (1952), and, more recently, David A. Kolb (1984). Kolb developed an Experiential Learning Model that outlines the learning experience as a constantly revisited four-step cycle. The model's four steps begin with the abilities the student develops through concrete experience, followed by reflective observation, abstract conceptualization, and active experimentation. Students are engaged in a circular cycle in which community settings serve as the venue for concrete experience and form the basis for written or oral reflection (Boise State, 2023).

## Chapter 6

### Discussion and Impact

Service learning and integrated resources play a crucial role in transformative education, benefiting both the research community and marginalized populations. By integrating real-world experiences with academic learning, students gain practical skills while contributing to society's betterment. This article explores the relationship between service learning and integrated resources, their impact on transformative education, and the benefits they bring to the research community and marginalized populations.

Service learning involves students participating in organized service activities that address community needs, while integrated resources refer to the incorporation of various educational tools and materials to enhance learning outcomes. When two elements are combined, they create a powerful educational approach that fosters personal growth, social responsibility, and academic achievement. Through service learning, students engage in firsthand experiences that deepen their understanding of societal issues, leading to empathy, compassion, and a sense of civic duty.

The integration of resources further enriches the learning process by providing students with diverse perspectives, access to relevant information, and opportunities for interdisciplinary collaboration. This comprehensive approach to education not only equips students with practical skills but also empowers them to become agents of positive change in their communities. Moreover, the research community benefits from insights and data gathered through service-learning projects, thereby advancing knowledge and developing innovative solutions to complex challenges.

For diverse populations, the impact of service learning and integrated resources is earnest. These educational initiatives create pathways for underprivileged individuals to access quality education, gain valuable skills, and participate in community development efforts. By actively involving diverse populations in service-learning projects, their voices are amplified, and their unique perspectives contribute to meaningful research outcomes that address their specific needs and challenges for individuals with disabilities. Which will help encompass opportunity, diversity, and inclusion, success, and the definition of the status quo.

## **YOU ARE IDEAL**

YOU ARE IDEAL. This is the slogan and acronym for the non-profit organization I founded over 5 years ago. IDEAL stands for Intelligence Determination Essence About Learning Inc. This organization was established to stimulate individuals' visions to educate about various opportunities for their future. The purpose of this organization is to provide the "IDEAL" services for individuals and communities through programs of teaching, research and services. Through this organization many initiatives were established but the very first one that made this organization known for the services it offers is "Abilities in Action". Abilities in Action is an initiative program that provides tailored job placement, supportive employment and long-term support for individuals with disabilities. Through strategic partnerships with the State of Arkansas Rehabilitation Services the program bridges the gap between job opportunities and inclusive work environments, empowering individuals to thrive professionally and socially. The IDEAL focus is to continue to empower all individuals to set the goals that they are empowered to accomplish. Through this affirmative slogan it gives the individual's no matter what their current circumstances the hope, determination and encouragement to know they can and will forever be IDEAL. As an educator and philanthropist to guide everyone and provide the "IDEAL" services needed to help everyone "To Make IMPACT with PURPOSE"

## **Conclusion**

The combination of service learning and integrated resources offers substantial benefits for individuals with disabilities, encompassing skill development, social inclusion, and enhanced quality of life. As educators, entrepreneurs, and community members continue to recognize the value of these directives, it is imperative to promote and expand initiatives that foster meaningful participation and empowerment for individuals with disabilities. The combination of service learning and integrated resources offers substantial benefits for individuals with disabilities, encompassing skill development, social inclusion, and enhanced quality of life.

As educators, policymakers, and community members continue to recognize the value of these approaches, it is imperative to promote and expand initiatives that support meaningful participation and empowerment for individuals with disabilities. The pivotal role of new research in learning services and integrated resources for societal advancement for individuals with disabilities offers an opportunity to achieve a transformative impact. This is an innovative approach to address today's challenges. The new research from my DDP topic has the potential to redefine the status quo and pave the way for new precedent-setting levels of success in both educational outcomes and community impact. By investigating the most effective practices, challenges, and outcomes of service learning, integrated resources can provide educators, advocates, families, and policymakers with new, evidence-based strategies to improve the implementation of innovative programs.

The advent of integrated resources, including digital technologies and interdisciplinary collaborations, offers new avenues to enhance the effectiveness of service-learning initiatives. For example, online opportunities can be efficient for all students, educators, and community organizations. These advancements can offer opportunities to expand and explore how best to use new resource tools for service learning. The success of individuals and communities in the 21st century depends on adaptability to change and on demonstrating best practices in service learning and integrated resources, which can foster a generation of informed and engaged citizens. In turn, this can be a goal achieved, but it can also redefine the status quo by promoting diversity, inclusion, and sustainability in society.

**AI Usage Disclosure:**

This document was created with the assistance of AI(ChatGPT) tools. The author used ChatGPT to help produce a concise flow of information using the information gathered and reviewed. For more information on how AI(ChatGPT) was used, please contact the author.

## References

- Ash, S. L., & Clayton, P. H. (2009). Generating, deepening, and documenting learning: The power of critical reflection in applied learning. *Journal of Applied Learning in Higher Education*, 1(1), 25–48.
- Baldwin, Shelia C., et al. “What Teacher Candidates Learned about Diversity, Social Justice, and Themselves from Service-Learning Experiences.” *Journal of Teacher Education*, vol. 58, no. 4, 2007, pp. 315–327, <https://doi.org/10.1177/0022487107305259>.
- Balogh, R., McMorris, C. A., Lunskey, Y., Ouellette-Kuntz, H., Bourne, L., Colantonio, A., & Gonçalves-Bradley, D. C. (2016). Organizing healthcare services for people with intellectual disability. *Cochrane Database of Systematic Reviews*, (4).  
<https://doi.org/10.1002/14651858.CD007492.pub2>
- Bandura, A. (2001). Social cognitive theory: An agentic perspective. *Annual Review of Psychology*, 52(1), 1–26.
- Boot, F. H., Owuor, J., Dinsmore, J., & MacLachlan, M. (2018). Access to assistive technology for people with intellectual disabilities: a systematic review to identify barriers and facilitators. *Journal of Intellectual Disability Research*, 62(10), 900–921.  
<https://doi.org/10.1111/jir.12532>
- Bringle, Robert G., and Julie A. Hatcher. “Institutionalization of Service Learning in Higher Education.” *The Journal of Higher Education*, vol. 71, no. 3, 2000, p. 273,  
<https://doi.org/10.2307/2649291>.
- Brown, A., Johnson, C., & Wilson, E. (2019). The impact of service learning on individuals with disabilities. *Journal of Community Engagement*, 15(2), 45–58.

Buber, M. (1970). *I and thou*. (W. Kaufmann, Trans.) New York: Charles Scribner's Sons. (Original work published in 1923)

*Community integration for people with disabilities: UDS*. UDS Foundation. (2022, June 14).

<https://udservices.org/community-integration-people-with-disabilities/>

Carter, E. W., Austin, D., & Trainor, A. A. (2012). Predictors of postschool employment outcomes for young adults with severe disabilities. *Journal of Disability Policy Studies, 23*(1), 50–63.

Castro-Kemp, S., & Samuels, A. (2022). Working together: A review of cross-sector collaborative practices in provision for children with special educational needs and disabilities. *Research in Developmental Disabilities, 120*, 104127. <https://doi.org/10.1016/j.ridd.2021.104127>

Eidson, C. A., Yuen, H. K., Vogtle, L. K., & McCurry, V. O. (2018). Methodological quality of service-learning studies in rehabilitation professions: A systematic review. *Work, 61*(1), 55–67. <https://doi.org/10.3233/WOR-182779>

Eyler, J., & Giles, D. E. (1999). *Where's the learning in service-learning?* Jossey-Bass.

Facione, P. A. (1990). Critical thinking: A statement of expert consensus for purposes of educational assessment and instruction. American Philosophical Association.

Freire, P. (1970). *Pedagogy of the Oppressed*. Continuum.

Furco, A., & Moely, B. E. (2012). Using learning theory to frame the issues concerning service-learning research. *American Behavioral Scientist, 55*(5), 665–679.

Garwood, J. D., Peltier, C., Ciullo, S., Wissinger, D., McKenna, J. W., Giangreco, M. F., & Kervick, C. (2023). The Experiences of Students with Disabilities Actually Doing Service Learning: A Systematic Review. *Journal of Experiential Education, 46*(1), 5–31.

<https://doi.org/10.1177/10538259221109374>

- Gent, P. J., & Gurecka, L. E. (2001). Service-learning: A disservice to people with disabilities? *Michigan Journal of Community Service Learning*, 8(1).  
<http://hdl.handle.net/2027/spo.3239521.0008.104>
- Gréaux, M., Moro, M. F., Kamenov, K., Russell, A. M., Barrett, D., & Cieza, A. (2023). Health equity for persons with disabilities: a global scoping review on barriers and interventions in healthcare services. *International Journal for Equity in Health*, 22(1), 236.  
<https://doi.org/10.1186/s12939-023-02035-w>
- Hall, S. A. (2017). Community integration of people with disabilities. *Journal of Policy and Practice in Intellectual Disabilities*, 14(1), 1–9.
- Hunt, X., Bradshaw, M., Vogel, S. L., Encalada, A. V., Eksteen, S., Schneider, M., ... & Swartz, L. (2022). Community support for people with disabilities in low-and middle-income countries: A scoping review. *International journal of environmental research and public health*, 19(14), 8269. <https://doi.org/10.3390/ijerph19148269>
- Jacoby, B. (2015). *Service-learning essentials*. Jossey-Bass.
- Jones, R., & Smith, L. (2018). Fostering community integration through service learning for individuals with disabilities. *Disability Studies Quarterly*, 38(3), 211–225.
- Johnson, M. (2020). Enhancing accessibility through integrated resources for individuals with disabilities. *Journal of Assistive Technology*, 25(4), 301–315.
- Kaiser, L., Conrad, S., Neugebauer, E. A., Pietsch, B., & Pieper, D. (2022). Interprofessional collaboration and patient-reported outcomes in inpatient care: a systematic review. *Systematic reviews*, 11(1), 169. <https://doi.org/10.1186/s13643-022-02027-x>

Luhr, M., Gordon, H., Denny-Brown, N., Peterik, K., Honeycutt, T., Elgart, B., & Freeman, G.

(2023). What works to promote competitive integrated employment among people with disabilities?

<https://swtceillinois.ahs.illinois.edu/files/2023/11/84.421DDIFSystematicEvidenceReview.pdf>

Macdonald, H. (2004). Geologic Puzzles: Morrison Formation, *Starting Point*. Retrieved Sept 9,

2004, from <http://serc.carleton.edu/introgeo/interactive/examples/morrisonpuzzle.html>

Mezirow, J. (1994). Understanding Transformation Theory. *Adult Education Quarterly* 44 (4), 222

Mezirow, J. (1997). Transformative learning: Theory to practice. *New Directions for Adult and Continuing Education*, 1997(74), 5–12. doi:10.1002/ace. 74

O'Connor, M. P. (2009). Service Works! Promoting Transition Success for Students with

Disabilities through Participation in Service Learning. *TEACHING Exceptional Children*, 41(6), 12–17. <https://doi.org/10.1177/004005990904100602>

Olnes, L. (2008). Special projects for special people: Students with disabilities serve others through

service-learning projects. *TEACHING Exceptional Children Plus*, 5(2) Article 4. Retrieved [date] from <http://escholarship.bc.edu/education/tecplus/vol5/iss2/art4>

*The four-stage learning cycle by David Kolb*. Training Thinking RSS2. (n.d.).

<https://thetrainingthinking.com/en/the-four-stage-learning-cycle-by-david-kolb/>

Service-Learning. (2020, March 27). *Theoretical Foundations of Service-Learning*.

<https://www.boisestate.edu/servicelearning/faculty/theoretical/>

Shogren, K. A., Wehmeyer, M. L., Buchanan, C. L., & Lopez, S. J. (2015). The application of

positive psychology to disability. *Journal of Positive Behavior Interventions*, 17(2), 69–80.

Simonet, D. (n.d.). Service-learning and academic success: The Links to Retention Research.

<https://www.compactnh.org/wp-content/uploads/large/sites/62/2016/04/Service-Learning-and-Academic-Success.pdf>

Smith, K., & Davis, P. (2017). The role of integrated resources in promoting inclusivity for individuals with disabilities. *Journal of Rehabilitation Services*, 12(1), 78–91.

Smythe, T., Zuurmond, M., Tann, C. J., Gladstone, M., & Kuper, H. (2021). Early intervention for children with developmental disabilities in low and middle-income countries—the action case. *International health*, 13(3), 222–231. <https://doi.org/10.1093/inthealth/ihaa044>

Styczen, L. M., Helseth, S., Groven, K. S., Hauge, M. I., & Dahl-Michelsen, T. (2024). Interprofessional collaboration for children with physical disabilities: a scoping review. *Journal of Interprofessional Care*, 1–17.

<https://doi.org/10.1080/13561820.2023.2295922>

University of Central Arkansas: UCA. (30 July 2023). *Service Learning*, [uca.edu/service-learning/types/](http://uca.edu/service-learning/types/).

Webster University's EdD Google Site (n.d.). *Transformative learning in the global community*. <https://sites.google.com/view/eddwebster/home/emphases/transformative-learning-in-the-global-community>Links to an external site.

Winter, C. M. (2023). Promoting Inclusion for Students Through Service-Learning. <https://spark.bethel.edu/etd/964>

Tollan, K., Jezrawi, R., Underwood, K., & Janus, M. (2023). A review of early intervention systems. *Current Developmental Disorders Reports*, 10(2), 147–153.

<https://doi.org/10.1007/s40474-023-00274-8>

Tyldesley-Marshall, N., Johnson, R., Parr, J., Brown, A., Ghosh, I., Mehrabian, A., ... & Grove, A. (2025, February). Improving partnerships to improve outcomes for children and young people with special educational needs and disabilities: qualitative findings from a mixed methods systematic review. In *Frontiers in Education* (Vol. 10, p. 1513668). Frontiers Media SA. <https://doi.org/10.3389/feduc.2025.1513668>