

Lauretanium



1925

WC

*Lauretanum.*

WEBSTER COLLEGE

WEBSTER GROVES

MISSOURI

1925

WC



# FOREWORD

AS it is fitting that all memorable events be chronicled, and as students experience in their school life moments which are of great importance to them, we, the editors of the Laurentanum, have endeavored in these pages to record faithfully, indelibly, for all time, such moments in the student year of 1924-25.

WC

# DEDICATION

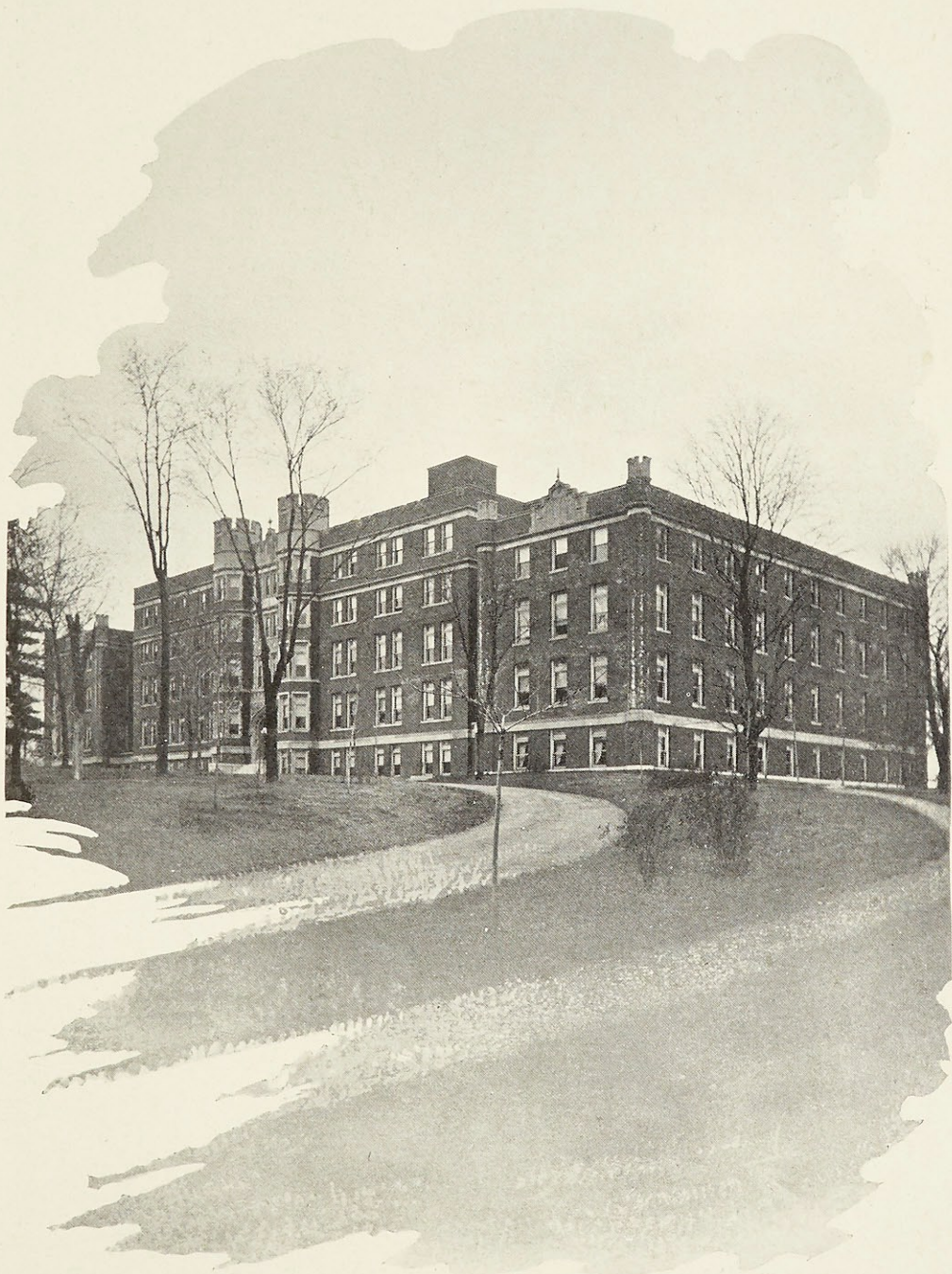
To

MOTHER MARY EDITH

*President of Webster College*

*I*N admiration of her success in the development of our Alma Mater, and in appreciation of her enthusiastic interest and cooperation in all student activities, this, the 1925 Lauretanum, is lovingly dedicated.

W.C.



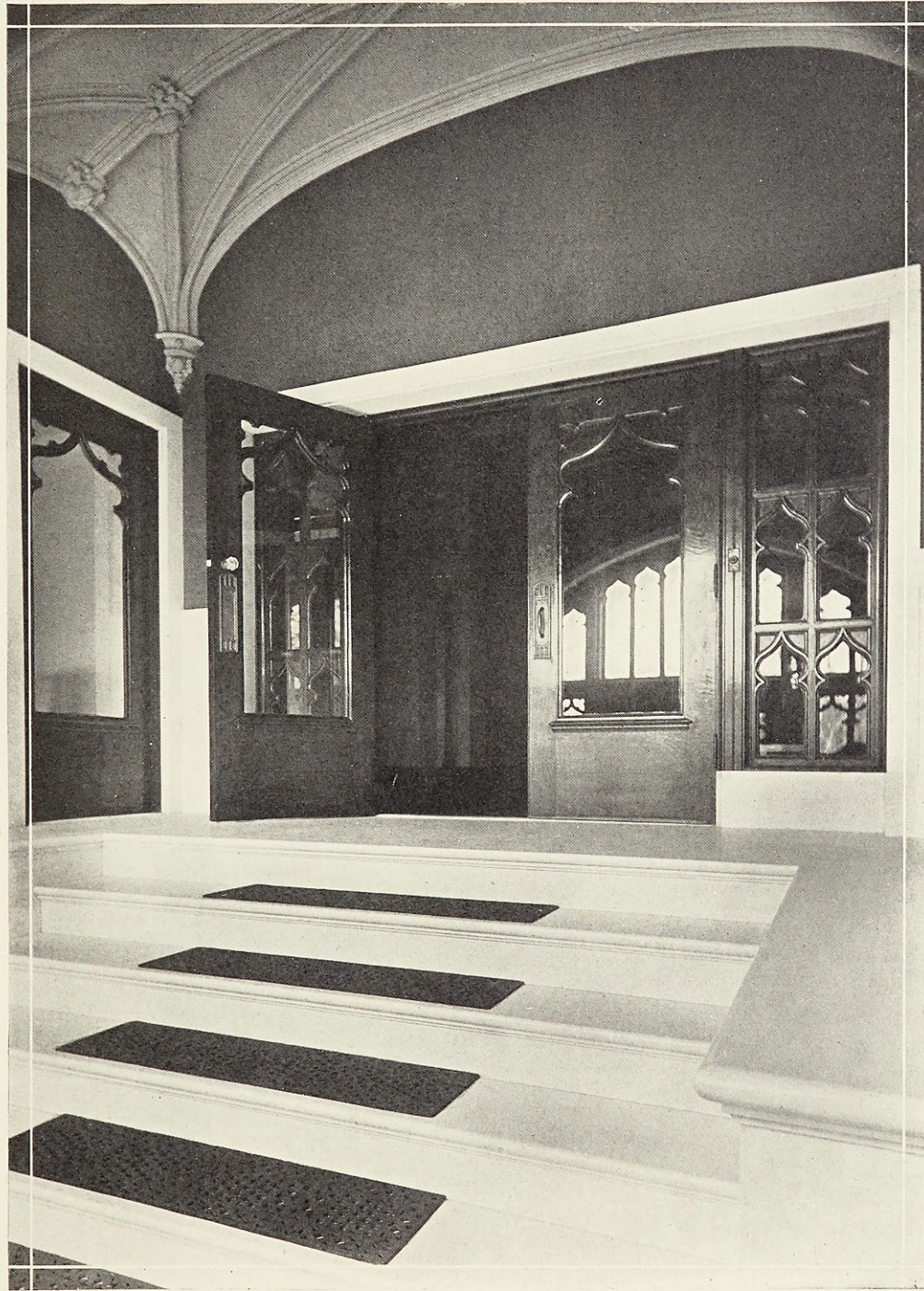
NORTH VIEW OF WEBSTER COLLEGE

W.C.



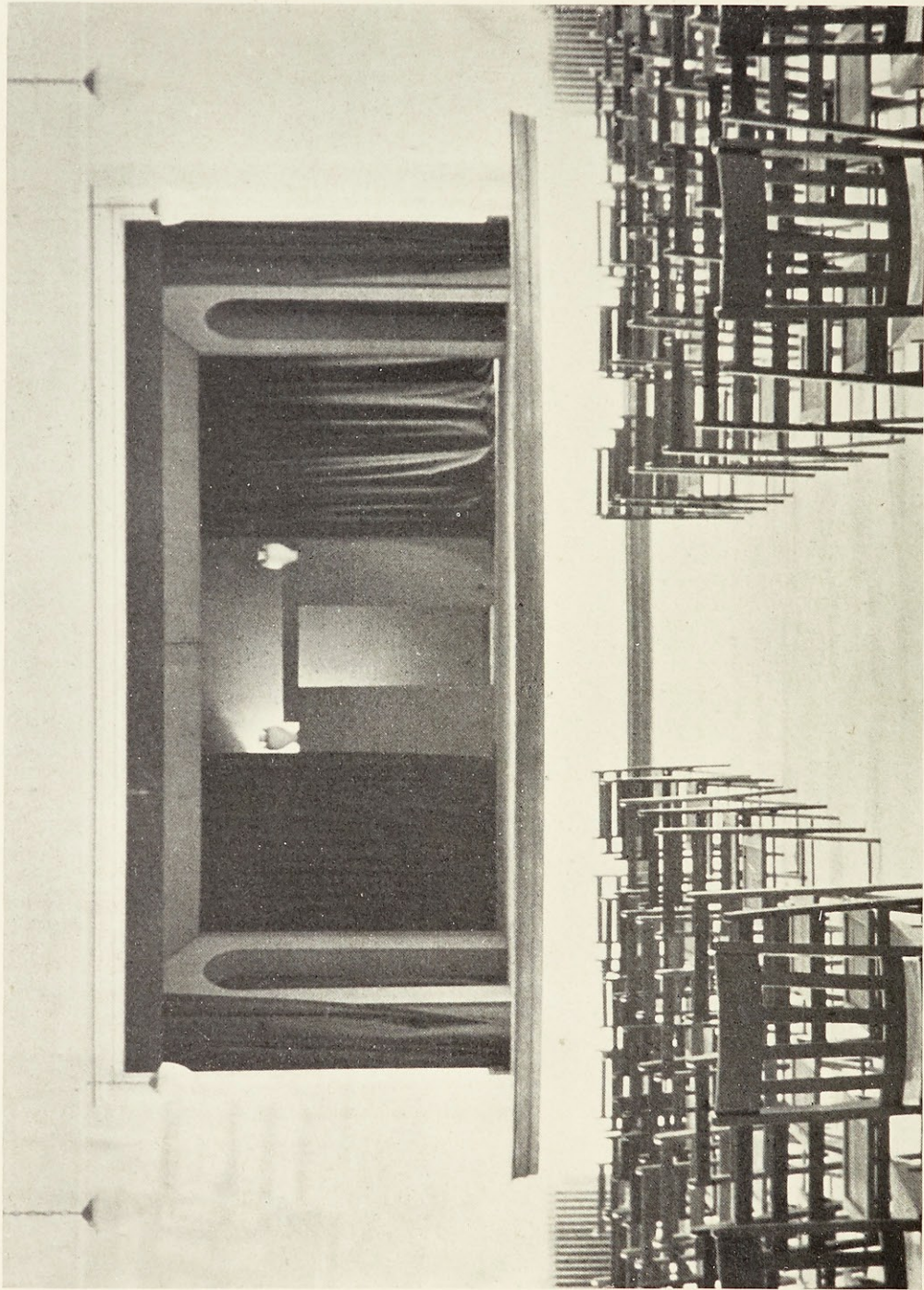
VIEWS OF LIBRARY

W.C.



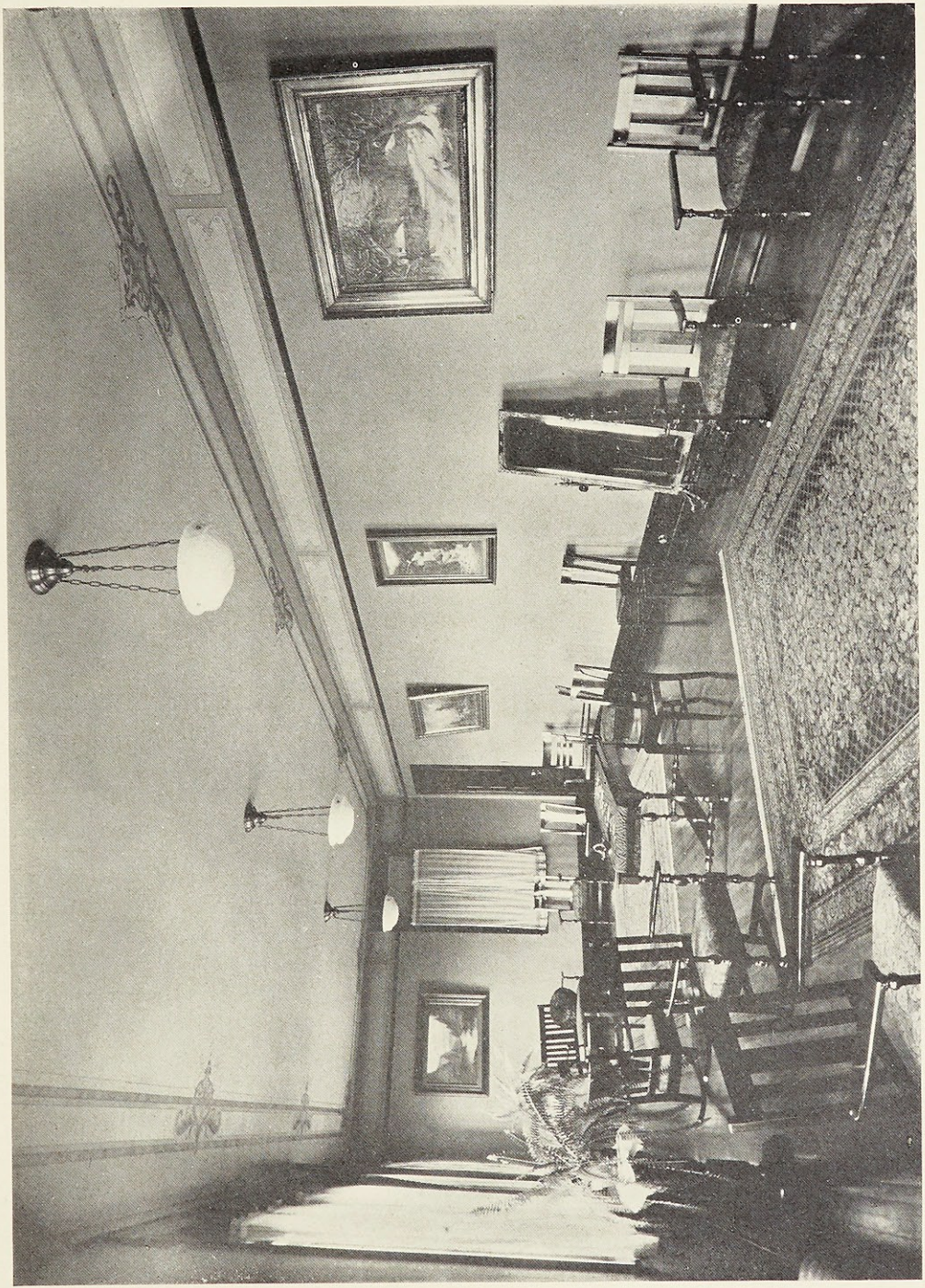
MAIN ENTRANCE

W.C.



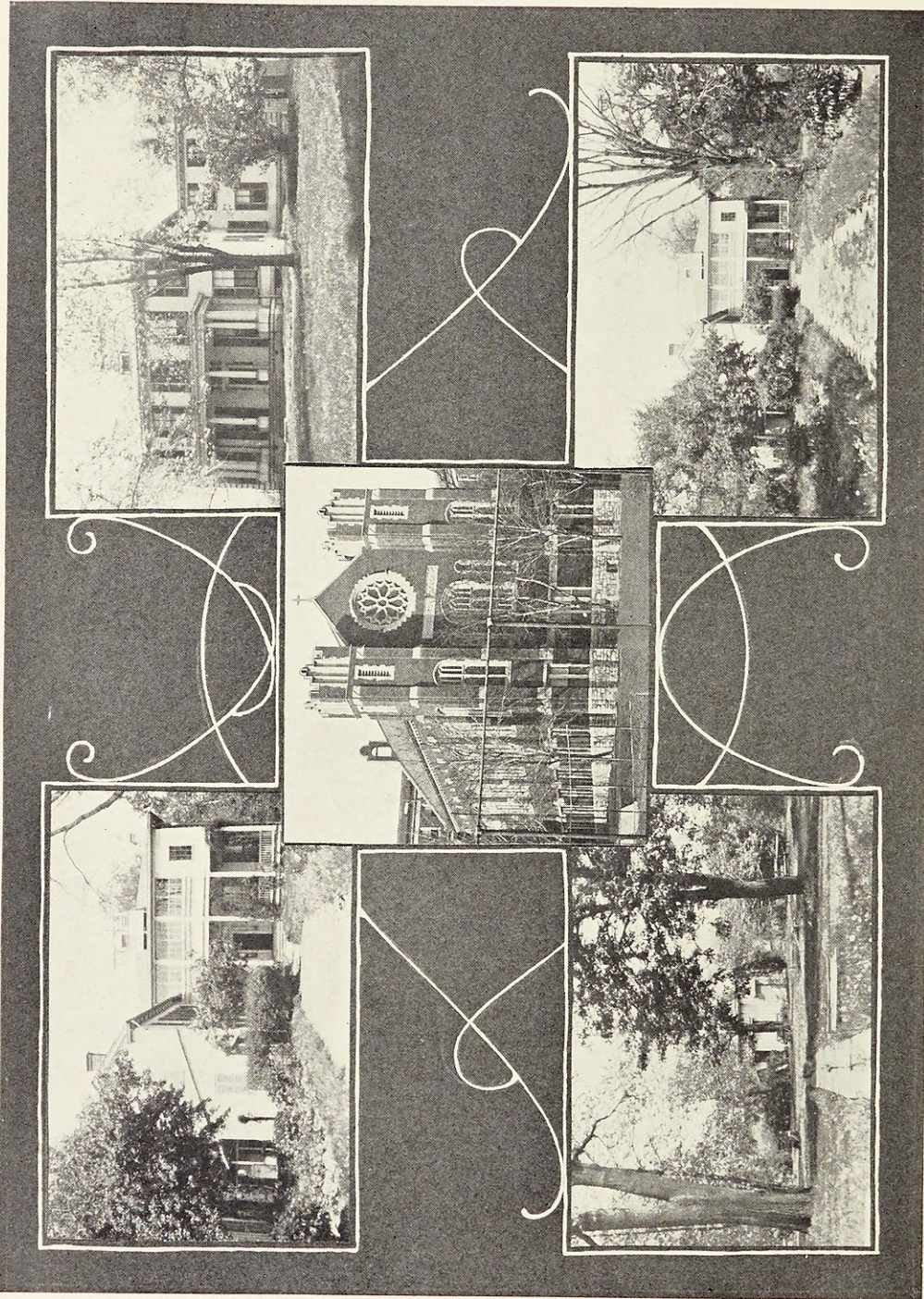
AUDITORIUM

W.C.



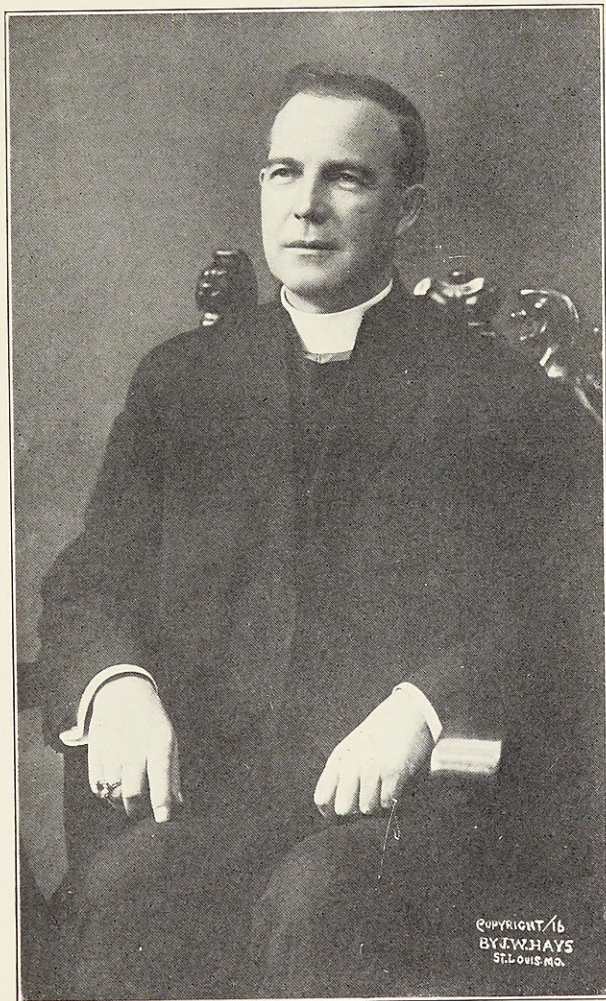
RECEPTION ROOM

WC



VIEWS OF BUILDINGS

W.C.



MOST REVEREND JOHN J. GLENNON, D. D.  
*Archbishop of St. Louis*

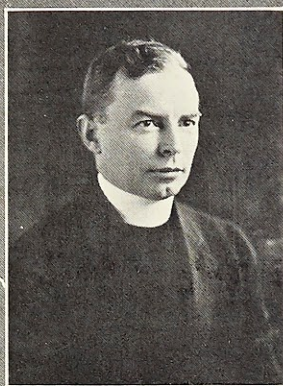
W.C.

TO SISTER LOUISE, Dean, and  
the Sisters of the Faculty, this  
page is gratefully dedicated, as a  
symbol of our deep appreciation for  
an interest that was never found  
wanting and a devotion that went  
before our every need, the blessed  
memory of which will always be a  
beacon light to guide us, and an in-  
spiration to impel us to the pursuit  
of higher things.

*Faculty*

REVEREND F. V. CORCORAN, C. M.,  
PH. D., S. T. D.,

*Professor and Head of Department of,  
Philosophy.*



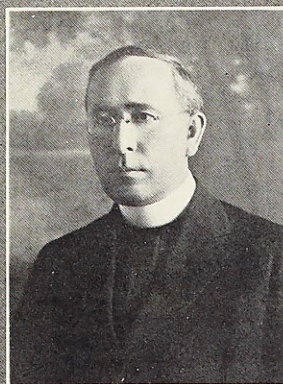
REVEREND C. L. SOUVAY, C. M.,  
PH. D., D. S. S.,

*Professor of Biblical History.*

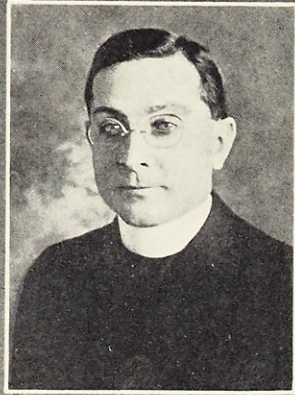


REVEREND J. P. DONOVAN, C. M.,  
J. C. D.,

*Professor of Sociology.*

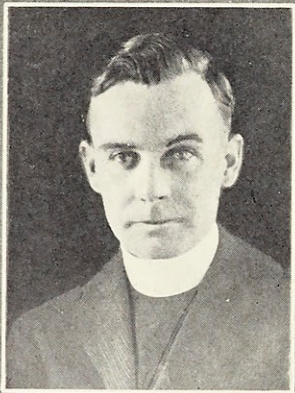


*Faculty*



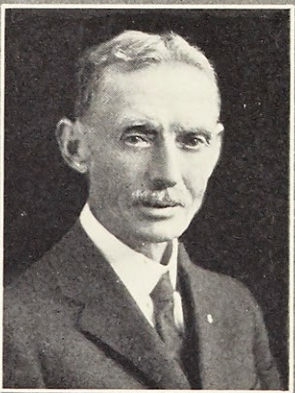
REVEREND J. W. CONROY, C. M.,  
S. T. D.,

*Professor and Head of Department of History.*



REVEREND J. P. O'MALLEY, C. M.,  
PH. D.,

*Professor and Head of Department of Religion.*



MR. C. T. HAGERTY, M. S.,

*Professor of Physics.*

Faculty

MARCELLE PREVOST, A. B., DIPLOME  
DE PROFESSEUR DE FRANCAIS A  
L'ETRANGER, U. OF PARIS,

*Instructor in French.*



MILDRED GEDDES DILLON,

*Instructor in Journalistic Writing.*

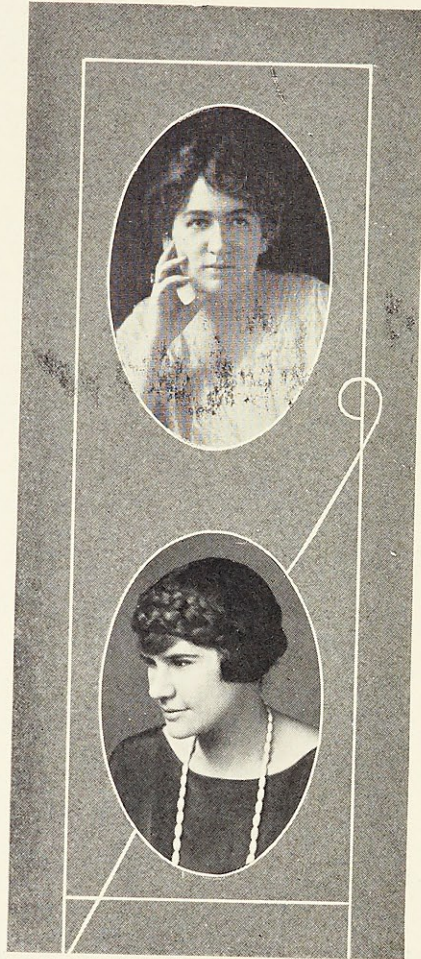


KATHRYNE SKARRY, A. B.,

*Instructor in English.*

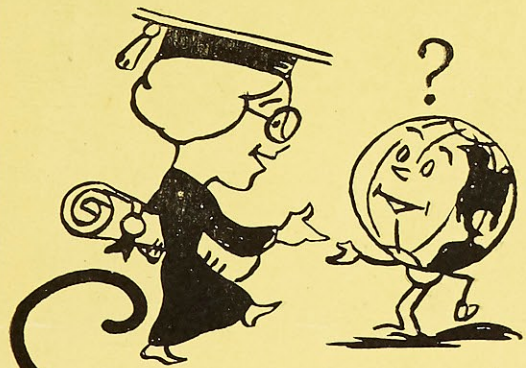


Faculty



MRS. ANNA McCLAIN SANKEY,  
*Professor and Head of Department in  
Expression.*

MISS LUCY REYNOLDS,  
*Instructor in Physical Education.*



# SENIORS



ELIZABETH VIOLET BARNICLE, LITT. B.  
ST. LOUIS

- President of Class, '23, '24, '25.*
- Advertising Manager of Lauretanum, '25.*
- Associate Editor of Loretine, '24, '25.*
- Treasurer of Sodality, '25.*
- Assistant Secretary of Sodality, '24.*
- Treasurer of Journalism Class, '25.*
- Athletics, '22, '23, '24, '25; Hockey, '22.*
- Captain of Class Basketball Team, '23.*
- Dramatics, '25; Choral Club, '25.*



MARIE LOUISE BULTE, A. B.  
ST. LOUIS

*Senior Expression Diploma, '22.  
Dramatics, '20, '21.*



GRACE MARIE CANTWELL, A. B.  
ST. LOUIS

*Bachelor of Music*  
*Editor-in-Chief of Lauretanum, '25.*  
*Prefect of Sodality, '25.*  
*Secretary of Mission Unit, '24.*  
*Associate Editor of Loretine, '23, '24.*  
*Sacristan of Sodality, '23.*  
*Choral Club, '25; Orchestra, '22.*  
*Athletics, '22; Hockey, '22.*



ANNE MARIE DELAY. LITT. B.  
KANSAS CITY, MISSOURI

*Art Editor of Loretine, '25.  
Secretary of Sodality, '24.  
Orchestra, '22, '23, '24, '25.  
Choral Club, '25.  
Athletics, '22.  
Hockey, '22.*

W.C.



LILLIAN M. DONOVAN, A. B.  
CLINTON, MISSOURI

*Rhode Island State College, '11, '12, '13, '14.  
National University of Science, Chicago, '20, '21 B. B.  
University of Illinois, Summer '23.  
Assistant Teacher Biology, Webster College, '24.*



MARIE HANLON, A. B.  
WEBSTER GROVES, MISSOURI

*Rockford College, Rockford, Illinois, '22, '23.  
Exchange Editor of Loretine, '25.  
Athletics, '22, '23, '24.*



HELEN HEALY, A. B.  
ST. LOUIS

*Associate Editor of Loretine, '25.  
Assistant Advertising Manager of Lauretanium, '25.  
Athletics, '22, '23; Hockey, '22.  
Choral Club, '25.*



LUCIENNE IBERGER, LITT. B.  
MARSEILLES, FRANCE

*Cours Poujol, Marseilles, France, '22, '23.  
Associate Editor of Loretine, '25.  
Choral Club, '25.  
Music Diploma, '25.*



ANNA MARIE JENNINGS, A. B.  
MAPLEWOOD, MISSOURI

- Secretary of Class, '23, '24.*
- Treasurer of Class, '23.*
- President of Catholic Instruction League, '24.*
- Associate Editor of Loretine, '24.*
- Editor of "Near and Far," Loretine, '25.*
- Class Historian, '25.*
- Choral Club, '24, '25.*
- Athletics, '22.*
- Dramatics, '22.*



ESTHER B. MOORE, A. B.  
GREELEY, NEBRASKA

*University of Nebraska, '19, '20, '21.  
Circulation Manager of Loretine, '25.  
Associate Editor of Laetatum, '25.  
City Editor of "The Web" for October.  
Secretary of Choral Club, '25.*



GLADYS MARIE O'CONNOR, A. B.  
EDINA, MISSOURI

- St. Xavier's College, Chicago, '22.*
- Business Manager of Lauretanum, '25.*
- Secretary of Class, '25.*
- Associate Editor of Loretine, '25.*
- Treasurer of Choral Club, '25.*
- Captain Class Basketball Team, '25.*
- Athletics, '22, '23, '24, '25.*
- Track, '23.*
- Hockey, '24.*
- Captain Upper-Class Basketball Team, '25.*



LILLIAN MARY O'CONNOR, A. B.  
EDINA, MISSOURI

- St. Xavier's College, Chicago, '22.*
- Bachelor of Music.*
- Vice-President of Class '24, '25.*
- Editor-in-Chief of Loretine, '25.*
- President of Athletic Association, '25.*
- President of Choral Club, '25.*
- Managing Editor of "The Web," November '24, February '25.*
- Assistant Prefect of Sodality, '25.*
- Editor of "Just Among Ourselves" Loretine, '24.*
- Associate Editor of Lauretanum, '24, '25.*
- Sacristan of Sodality, '24.*
- Athletics, '22, '23, '25.*
- Dramatics, '23, '25.*



ROSEMARY O'CONNOR, A. B.  
WEBSTER GROVES, MISSOURI

*Treasurer of Class, '24, '25.*  
*Treasurer of Laetatum, '25.*  
*Editor of "Just Among Ourselves" Lorette, '25.*  
*Dramatics, '22, '23, '24, '25.*  
*Athletics, '22, '23, '24.*



MARIAN FLAIZ PETERSEN, A. B.  
ST. LOUIS

*St. Mary's College, Prairie du Chien, Wisconsin, '22, '23.*  
*Associate Editor of Loretine, '25.*  
*Dramatics, '24.*  
*Choral Club, '25.*



MARGARET MARY TIERNON, MUS. B.  
ST. LOUIS

*Advertising Manager of Loretine, '25.  
Vice-President of Choral Club, '25.  
Orchestra, '23, '24, '25.  
Senior Diploma in Piano, '24.*

WC

To the five Sisters of  
Loretto who are members  
of the Class of 1925 this  
page is affectionately  
dedicated

## *History of the Class of 1925*

A history, a class history, a history of the Class of 1925! We are now no longer making our history, we are narrating it; and what a pleasurable task it is to muse over our four years. Truly, for us as Seniors, it is greater joy to recall, than as Freshmen to anticipate, for now we may dream over realities. Four years of real college life—made real by Webster's splendid faculty! Mother Edith, as President, and Sister Louise, as Dean, lovable personifications of Alma Mater. We are proud and thankful to have them in our history.

Now, as Freshmen: We numbered twenty-eight, our essential element being quality. We were inspected and passed as "Superior" on Initiation Night, but as we "were not proud," we were unaffected and wisely applied the "Superior" as a neutral for the acid third degree tactics tried upon us.

With one sweep of the pendulum the Thanksgiving Party was here, and the Freshman opportunity for retaliation. All we may tell about it is that we worked in the dark and that after it was over the upper-classmen individually voiced a preference for a solitary midnight stroll through a graveyard rather than to attend a Freshman party. So we were thus relieved of our grudge and set our ambitions higher.

We met with instant success in basketball. Our zest and skill gave us phenomenal success; phenomenal, no one will deny us the epithet since we succeeded in defeating the upper-classmen team.

In October we attended for the first time the Webster Fall Dance. We were proud to do so, and I believe that at the close of the evening everyone else was in turn proud of us, for we were undoubtedly declared the smart set of the occasion. We talked about the dance until it was eclipsed by the Christmas Party.

A total eclipse it was. I have been trying for three years to express my emotions on stepping into the banquet hall, but words fail me. I am sorry for your sake, friends, who were not lucky enough to attend, but for the members of the Class a mere mention of the event will recall hosts of pleasant memories.



## HISTORY OF THE CLASS OF 1925—*Continued*

Then the clever Christmas entertainment at which a tableau of "a day at Webster" was presented, gave Santa Claus a chance to live up to his old "rep" of being a fine old fellow. Retreat followed soon after the mid-year Exams. An opportune time. We considered this retreat, as well as the following three, most salutary and we bless the wisdom of our Alma Mater in providing for our spiritual as well as mental and physical development. In May we were invited to a week-end party at the Patagonian Club at Castlewood, a popular summer resort of St. Louis. We enjoyed the combined mountain and camp life exceedingly, in spite of the unpleasant muscular reaction.

Now, this completes our first year, or, rather, space demands its completion, for it would be impossible to record every memorable event of those four college years, each minute being marked by some significant happening, whether a passing anxiety or a new enjoyment.

As we look back over our Sophomore year, two prominent occurrences, attract our attention: Fall Day and the first Senior Prom. The former at Fenton was unquestionably typical of the many similar "keen" times we have had as collegiates. So successful was it that our first demand for the following September was a Fall Day. The innovation that year of the Senior Prom meant the attainment of the peak of Webster's social calendar. The picture was one of beauty and the tone one of real enjoyment.

So fleetly did Time pass by that, before we had realized it, the year was gone and we found ourselves Juniors. The desired degree loomed up magnificently. Probably in order to digest all the knowledge we had stored up and keep us from taking ourselves too seriously, we had several big laughs this year. Dr. Conroy, C. M., our History Professor, assured us that in his courses he did not crowd us with dates. And again——. The Marathon Contests, so popular while we were Juniors, did not escape us. Several of us drew wholly on our reserve sleep from 6 a. m. one day to 10 p. m. of the following. Anyone blinking an eye, or showing any signs of weakening was to be dealt with as the Spartan of old.

But the year was marked by some real accomplishments as well. It was then that the *Lauretanum*, our year book, made its debut. We can appreciate what pioneer work along this line must have been. The Catholic Instruction League also originated at this time, our activities being concentrated on the Claver Club. Because of its associates and the attending success, the teaching was made most interesting and agreeable. To the broadening influence of these various elements of a liberal education, a most opportune addition of our



## HISTORY OF THE CLASS OF 1925—*Continued*

Junior Year was a course in Parliamentary Law. This course was given us by Miss Gannon, who taught us not only the A, B, C's of Parliamentary Law, but found us so efficient that she graduated us with a convention. Parliamentary Law under Miss Gannon is a splendid school for character. So, devoid of any false pride, we, when Juniors, were convinced that every effort had been made to develop character in us.

We now have hopes of reaching the ripe old age of Matusala, probably surpassing his. Why? Because we survived a Junior's task of taking full charge of the Christmas Party and also of giving the toasts at the Senior banquet. But did we derive pleasure out of them, especially the latter? Our social calendar in this year also dates another event, the Tea in the spring for the twelfth-grade girls of Catholic High Schools in St. Louis and its suburbs.

And now the year of our Lord 1925 has arrived. Jubilee Year it is called. We are Seniors. There are twenty-one of us, each proud to be a classmate of the other. The privilege of being Seniors entails a very weighty duty, that of helping the Faculty run the school. As far as running goes, we are sure that it is reactionary, for we have been running in the literal sense since October, 1924. There is some real significance in being in charge of the Year Book, the Prom, the Loretine, the—well, everything. Before closing, mention must be made of the "Web", the bi-monthly student paper, whose forerunner was the "Listen". The "Web" began its publication this year under the able supervision of the class in Journalistic Writing.

And now, are we conscious that our days are becoming few? It would seem so with our "ethical feasts" and Saturday afternoon theaters and teas. Soon the decree will come for us to depart. We shall do so, but with our departure as our distinguished friend has said:

"Lady Loretto will stand upon the battlements; her eyes will follow us, her prayers will follow us; she will fight by our side through life".

ANNA MARIE JENNINGS.



# JUNIORS



*Junior Class*

<i>President</i>	.....	LOUISE MURPHY
<i>Vice-President</i>	.....	GENEVIEVE BARTHEL
<i>Secretary</i>	.....	ANNETTE GLEESON
<i>Treasurer</i>	.....	MARGARET MOWREY

GENEVIEVE BARTHEL  
 MARTHA BRADFISH  
 IRENE BRUNINGA  
 ADELE BURKART  
 LUCINDA CLEMENTS  
 ANNE DONOVAN  
 ANNETTE GLEESON  
 CECELIA HAUBER  
 MARY V. HIGDON  
 THEO MONTI

MARGARET MOWREY  
 LOUISE MURPHY  
 MARY ELIZABETH NEWELL  
 DOROTHY O'CONNOR  
 LUCY REYNOLDS  
 JEANETTE SANDKNOP  
 MARGARET SARGENT  
 NAN SHALLCROSS  
 HEDWIG STOCKER

FOUR RELIGIOUS

CLASS COLORS: LAVENDER AND WHITE

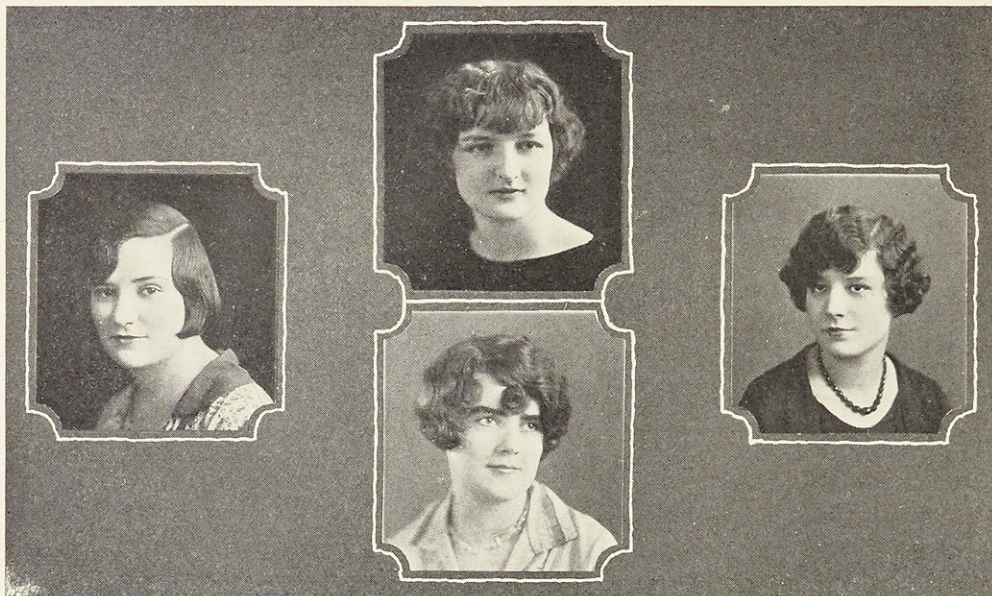
W.C.



WD







### Sophomore Class

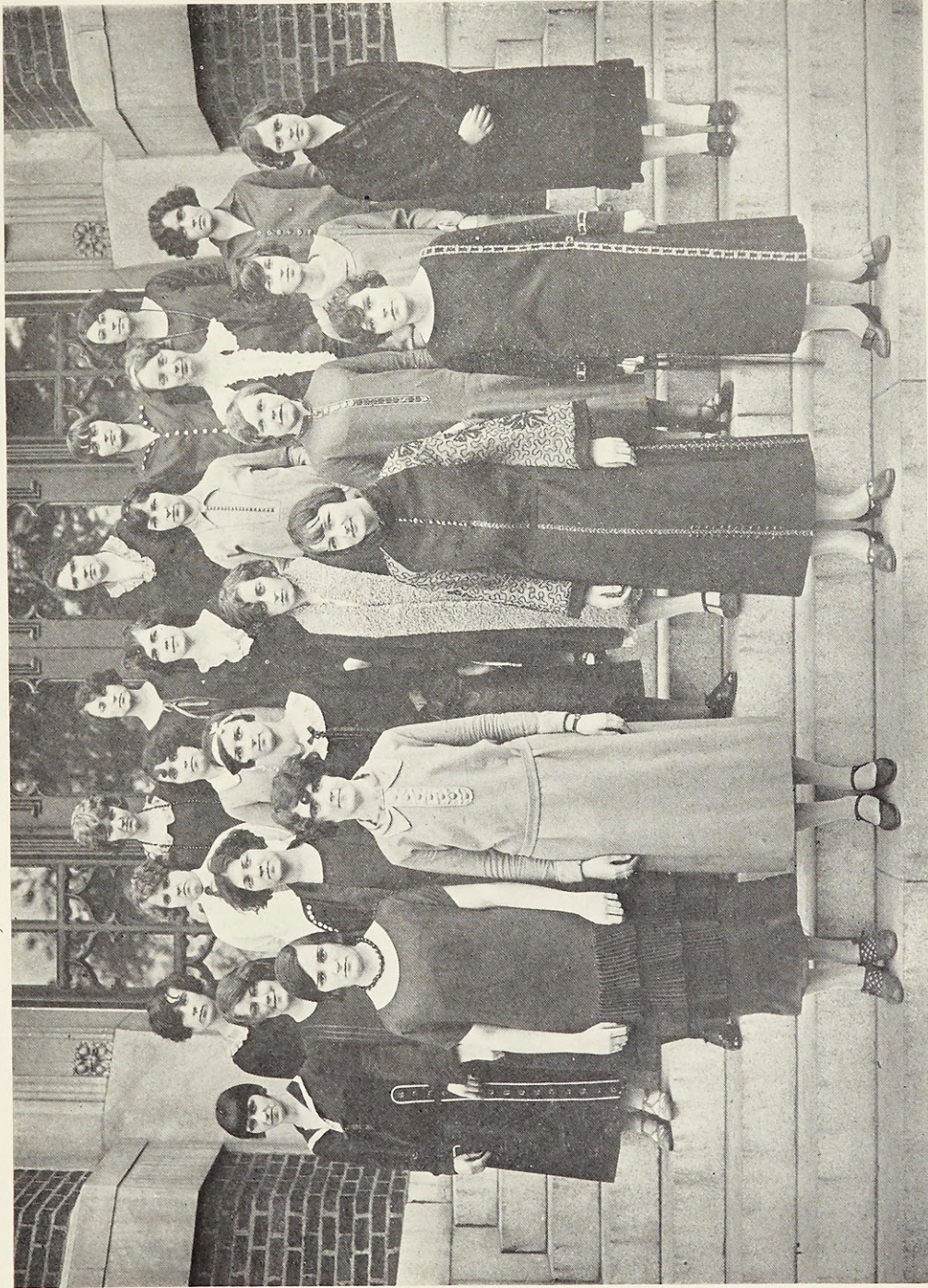
<i>President</i>	MARY TANCRED
<i>Vice-President</i>	THERESA SHEA
<i>Secretary</i>	MARIE HART
<i>Treasurer</i>	VIRGINIA STEPHENS

EULALIA AYDT	ELLA HUNTER	MARGARET REDDIN
ROSE BINDEWALD	NADINE HUNTER	ELEANOR ROHRER
LAVERNE BOPP	MATILDE IPINA	ROSALIE SIEFERT
MARY BURGET	HELEN KARCHER	THERESA SHEA
CATHERINE CLARK	MARY McNAMARA	HELEN SIMON
SUE COPPINGER	DOROTHY MONARCH	VIRGINIA STEPHENS
THEO FEHLIG	JEANNE MURPHY	MARY TANCRED
HELEN FOGG	MARGARET O'LEARY	AGNES TUCHSCHMIDT
AURORA GARZA	MARGARET PETERS	DOROTHY VENNEWITZ
HELEN HADSELL	MARIE POWERS	VIRGINIA WALSH
MARIE HART	MARY ELLEN RAPIER	MYRTLE WALTHER
MILDRED HENNAGE	ELEANORA RE	MARY WEBER
ERVILLA HIX		

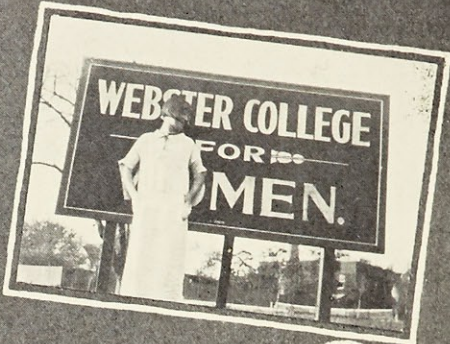
FOUR RELIGIOUS

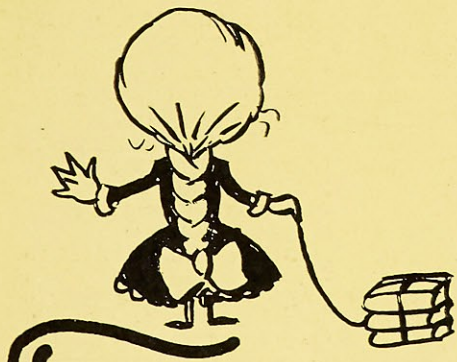
CLASS COLORS: GREEN AND WHITE

W.C.



WC





FRESHMEN



*Freshman Class*

<i>President</i>	ELIZABETH DAUWALTER
<i>Vice-President</i>	CELESTE BLOCK
<i>Secretary</i>	KATHRYN HUMMERT
<i>Treasurer</i>	ELIZABETH CORRIGAN

JUANITA ABELL  
 BLANCHE ALYEA  
 LAURA ARCHER  
 HARRIET AVERILL  
 ALFERDA BARNICKOL  
 MARGUERITE BARTHEL  
 ALICE BEAUDOIN  
 CELESTE BLOCK  
 FLORENCE BOYER  
 HELEN BRINTON  
 PEARL BRODERICK  
 MARTA BROWN  
 ANN CARR  
 ELLEN CASEY  
 MARY COOKE  
 REGINA CORCORAN  
 ELIZABETH CORRIGAN  
 THELMA COYNE  
 VIOLET DAMES  
 ELIZABETH DAUWALTER  
 MILDRED DILLON  
 DOROTHY DONOGHUE

ELLEN DUGGAN  
 LOUISE ECK  
 PEARL FARRELL  
 GRETCHEN FEGERS  
 THELMA GESELL  
 EDITH GLOSEMEYER  
 AGNES GRIFFIN  
 MARYBETH GURLEY  
 BERNADINE HAZEL  
 HELEN HECKENKAMP  
 HELEN MAE HEISSERER  
 RUTH HUCKENBECK  
 KATHRYN HUMMERT  
 MAUD JOKERST  
 KATHRYN KAY  
 HELEN KESHNER  
 FRANCES KOHL  
 MATHEA LALLY  
 JAYNE LEDWIDGE  
 MARGARET LEONARD  
 MARY LYNN  
 LORETTO MALONEY

HELEN MCANULTY  
 DOROTHY ANN MCBRIDE  
 VIRGINIA MCCLUNG  
 ANNE MARIE McDERMOTT  
 LUCILLE McGRATH  
 HELEN MCGUIRE  
 ANNIE RUTH MILLIGAN  
 MELBA NIEHOFF  
 MARGARET MARY PARKER  
 OLIVE PFEFFER  
 GERTRUDE PRENDERGAST  
 LUCILLE ROOF  
 MARIE SHEA  
 PAULINE SHOCKLEE  
 FLORENCE PITT SMITH  
 ROSAMOND SMITH  
 BEATRICE STACK  
 ESTHER STAMPFER  
 JEANETTE STIRITZ  
 HELEN STUCKSTEDE  
 MARGARET WEGMANN

FOUR RELIGIOUS

SPECIALS

LORETTO CANTY  
 ADELAIDE GROSS

MURIEL CLEMENS

CAROLYN DZIATZKO  
 BERNICE FICK

CLASS COLORS: BLUE AND WHITE

W.C.



W.C.



STUDENT GROUP



Music



### *Loretto Conservatory of Music*

The last two decades of the Twentieth Century have witnessed phenomenal changes in the teaching of methods and theory of music in the United States. Conservatories have arisen to compete with those of Europe, in which American teachers under American patronage are trained along the best acknowledged lines. In consequence, in our country, musical culture was never so vigorous as at present and the appreciation of what is best in music is recognized and widespread. The religious educators of the country, quick to accept and take advantage of every cultural opportunity, have attended these schools of music, completed their courses, and are now imparting to the students in the conservatories attached to their Catholic colleges, the scholarly training they have received.

Among these institutions, youthful in years, but mature in standards and accomplishments, Loretto Conservatory holds place. It is connected with Webster College and is incorporated under the State Laws of Missouri to grant degrees, diplomas, and teachers' certificates, in music. As a unit of the College, it enjoys advantages incident to a close interrelation with other departments of the Liberal Arts Institution. These advantages are necessary to an artistic development, as a broad and cultural education is fundamental to a thorough

## LORETTO CONSERVATORY OF MUSIC—*Continued*

musical training. Music students may elect courses in the College department that are credited toward a Bachelor of Music degree. And, on the other hand, credits are given toward a Bachelor's degree in the College for work done in certain courses in the Conservatory. The advantages of this departmental reciprocity are obvious.

The curriculum includes courses in Piano, Voice, Violin, Pipe Organ, History of Music, and Appreciation, Theory, Harmony, Ear Training, Counterpoint, Musical Form, Sight-Singing and Ensemble.

The serious pursuit of music is generally conceded to be not only a most developing study, but, when directed by trained and experienced teachers, inspiring and stimulating. The Faculty of Loretto Conservatory has secured the most up-to-date and artistic training to be had, and the master classes of artist teachers afford opportunities that cannot be overestimated.

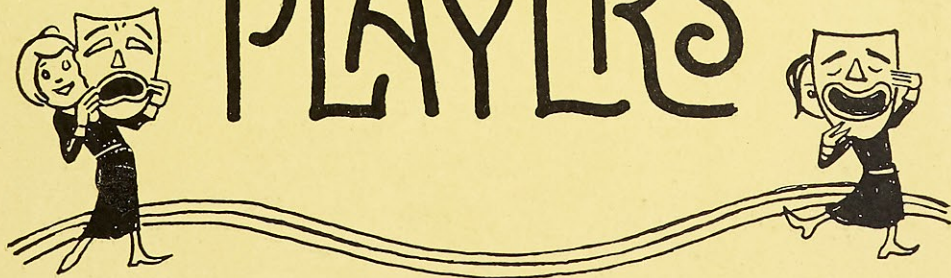
Music, in its very nature, is emotional, hence its genuine interpretation requires intense expression of feeling, which must be kept within due bounds by an intelligent and intellectual conception of the theme and discrimination of touch. To that effect, most beneficial is actual contact with great performers, from whom we may learn the happy blending of essential qualities, the sense of proportions, and the fine and exquisite appreciation of tonal gradations. Therefore, every opportunity is given Conservatory students to hear concerts and recitals by noted singers and virtuosi. Within the last few seasons, we have been favored with excellent programs by Kreisler, Rachmaninoff, Paderewski, McCormack, Heifetz, Cortot, Matzenauer, Hackett, Ganz, Yolanda Mero, Zimbalist, all of whom rank as masters of the musical world.

Thus in methods, in cultural advantages, in the opportunity of hearing great masters, Loretto Conservatory of Webster College offers every facility for the development of musicians trained equally in technique, interpretation, and the best traditions of their art.

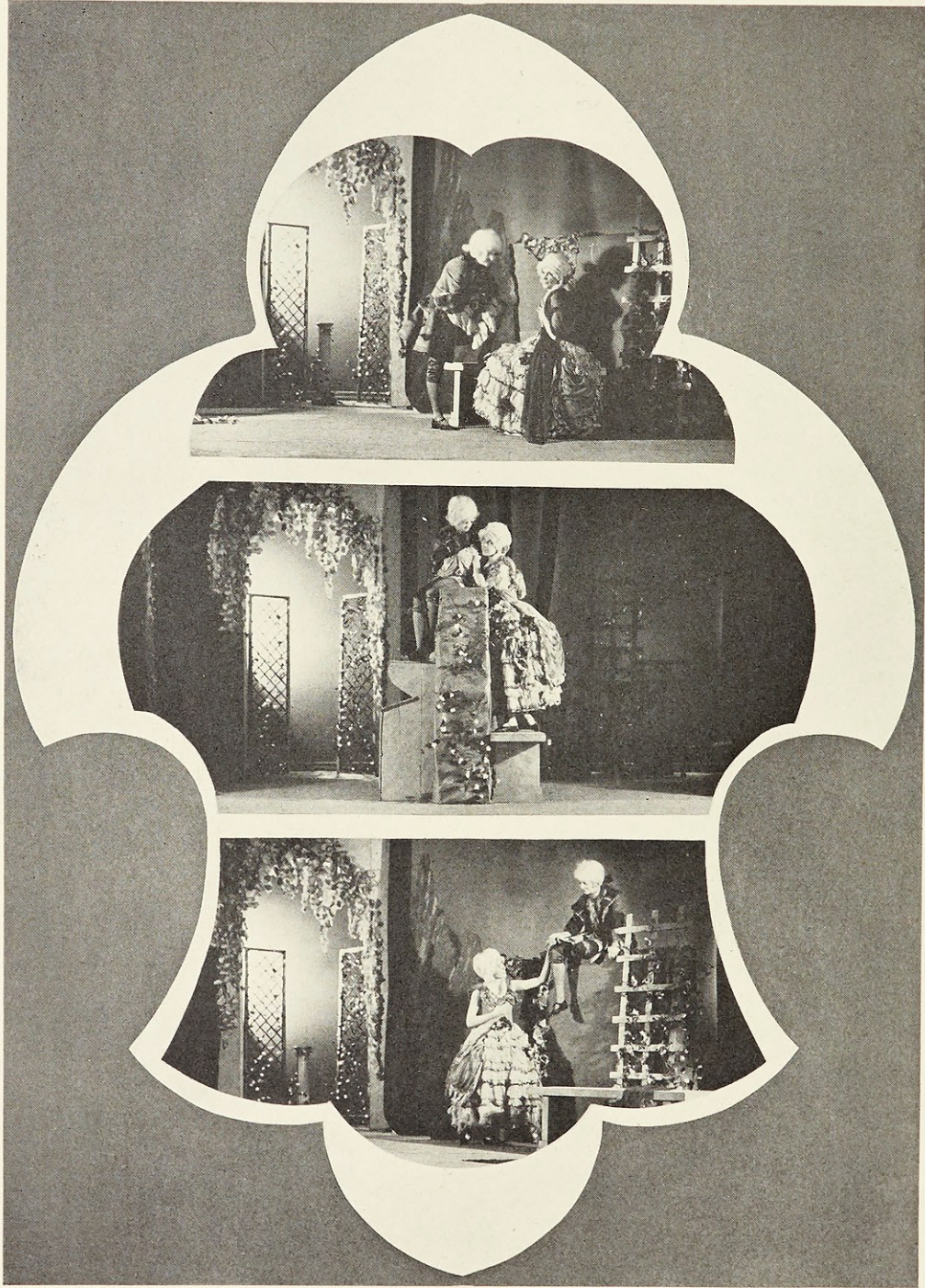
WD



# PLAYS and PLAYERS

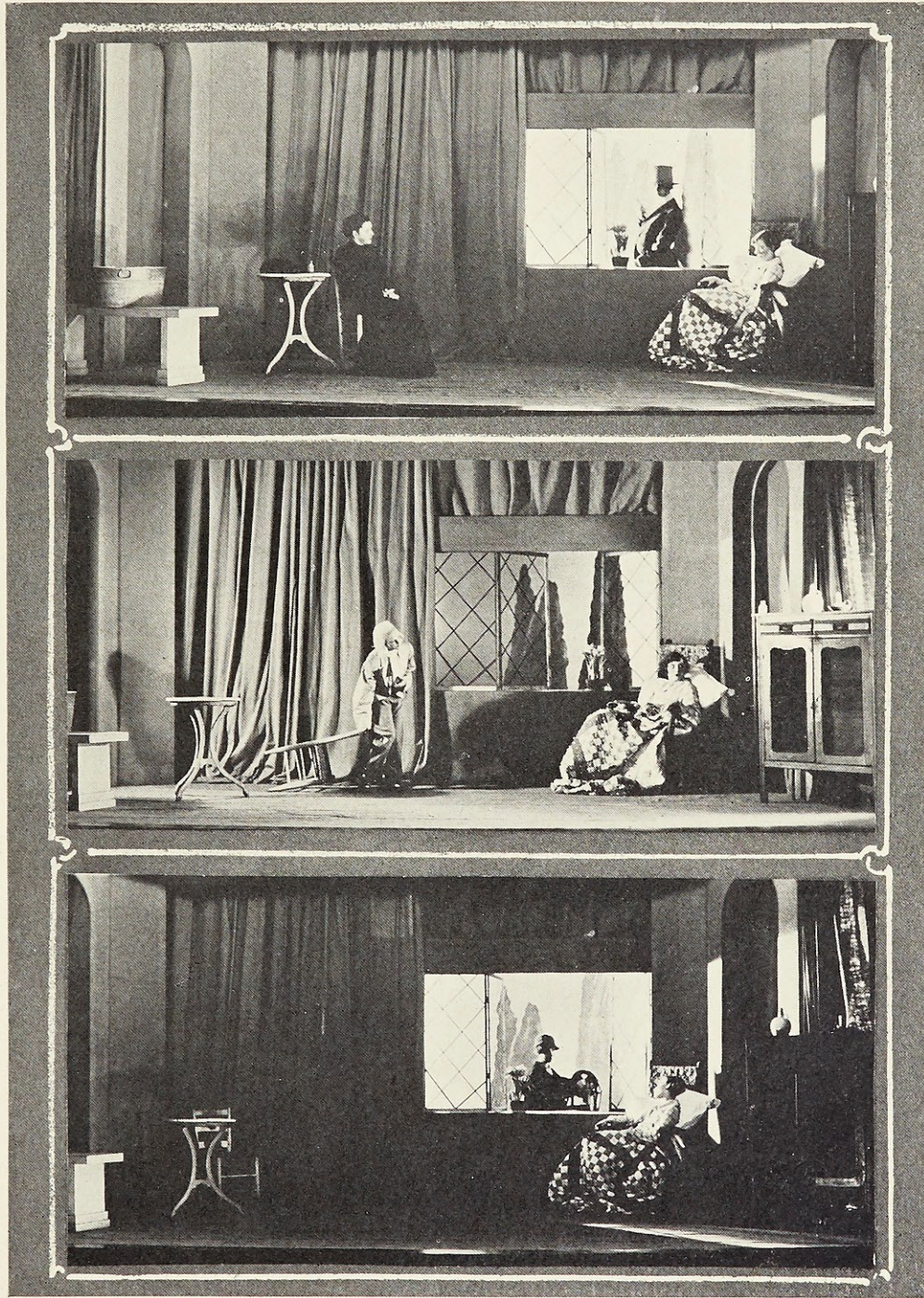


W.D.

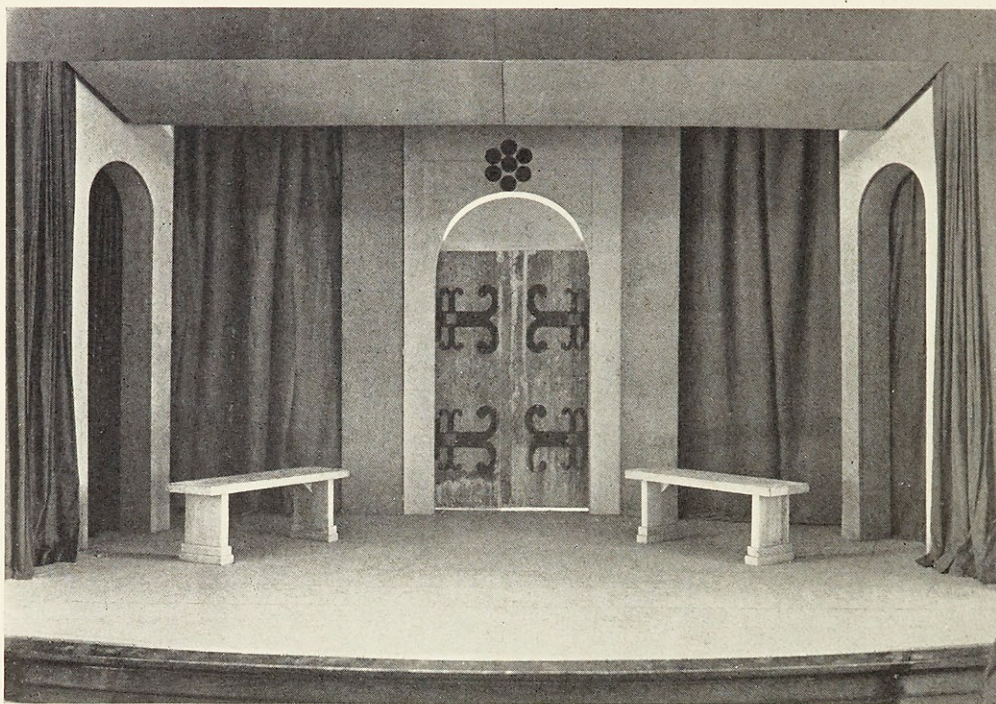


SCENES FROM "THE ROMANCERS"

W.C.



SCENES FROM "THREE PILLS IN A BOTTLE"



STAGE SETTING FROM "SIR FOLLY"

### *Dramatics*

Dramatics at Webster College "are a fine blend of Little Theater, laboratory work for the classes in dramatic literature and sheer joy of acting". This has been said of the dramatic department of our college and we think it an adequate description.

Our Little Theater has been characterized as one of the best in the Mid-West. It is equipped with a modern and very effective lighting system. The stage is masked in green drapes that fall in graceful folds and a cyclorama of Maxfield-Parrish blue is used as a background for all stage pictures, some breathtaking in their beauty, and others of colors brilliant and tender that blend into unforgettable harmony.

The dramatic art department originated with a few interested and enthusiastic students, but it has expanded until now the "dramatis personae" includes a large percentage of the college pupils.

A class in stagecraft was organized this year which has proved invaluable, as it familiarizes both actors and craftsmen with period types of settings, properties and costumes, with new ideals of lighting and equipment, with good plays and reputable authors.

Because of the growing popularity of one-act plays, much work has been done in their presentation this year. Usually a group of three or four dramas is presented in one evening. Such groups, as well as bringing the students in touch with a greater amount of dramatic literature, afford an opportunity for a number and diversity of leading roles.

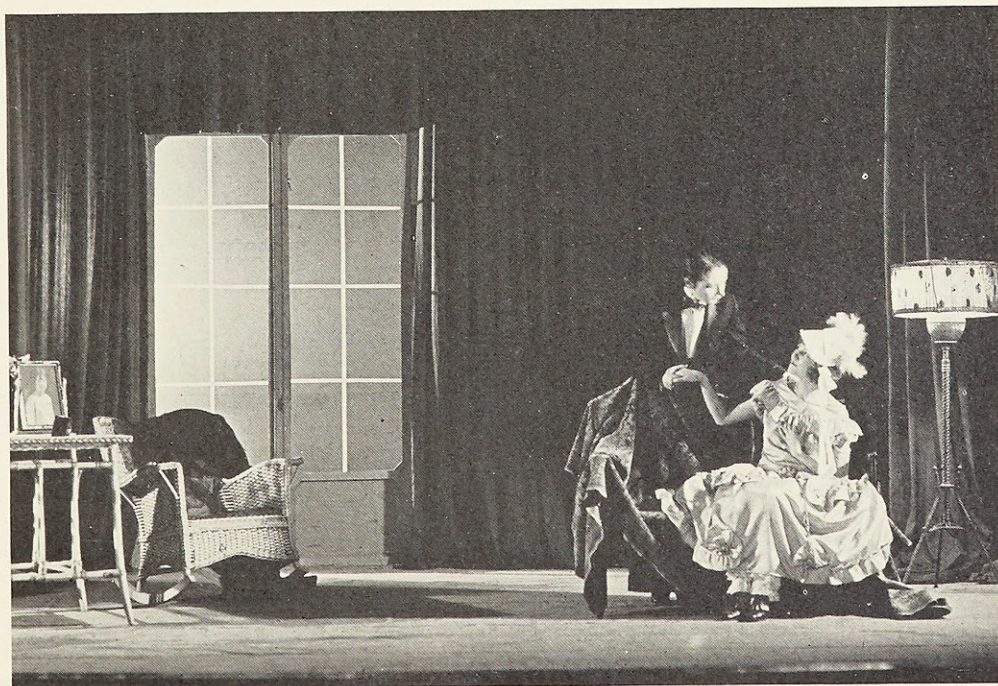
This year our Little Theater saw enacted on its stage such plays as "Romancers", by Edmond Rostand; "Sir Folly", by Rev. D. A. Lord, S. J.; "Betty's Ancestors", by Emma M. Hunting; "A Fan and Two Candlesticks", by Mary MacMillan, and "The Lamp Went Out", by Jessie Pierce, and others. They are variations of the humorous, the fantastic, the dramatic, and the presentation of them has scored a huge success.

DRAMATICS—Continued

Mrs. Anna McClain Sankey, who is in charge of this course, displays an infinite amount of ability and patience. Her enthusiastic ardor has spread to the girls, and as her department is one of the most interesting and delightful offered by the college, it has become exceedingly popular, so that even the most "stage-shy" find a real joy in the work. Neither the monotony nor grind of rehearsals can stamp out the enthusiasm of director and actors. Mrs. Sankey has set her standards high and, with continual working and striving toward that goal, finished productions such as Althea Thurston's "Exchange" and Stuart Walker's "Nevertheless" have been presented during the scholastic year.

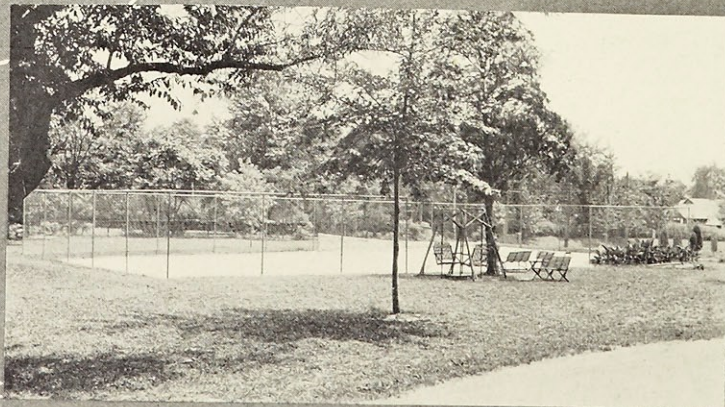
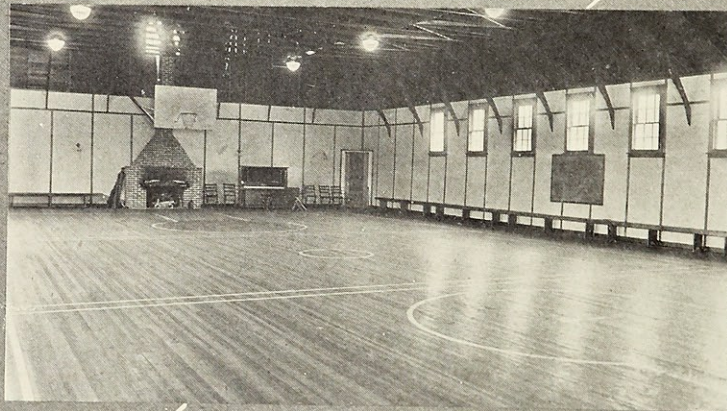
Every year each girl by her ability and earnest work in the plays, merits a part in Shakespeare which is presented during commencement week. For some years a double cast has been in vogue, thus giving ample opportunity for everyone. In the past many favorable comments have been made on the splendid training and accomplishment evinced by us amateurs—for, after all, we are amateurs—in this climax of our dramatic work, an interpretation of Shakespeare. We have given "Merchant of Venice", "As You Like It", "Twelfth Night", and "Taming of the Shrew". The work throughout the year tends to build up "a corps of finished players, experienced, sure of themselves, trained in a variety of roles, who, at the end of the year, are able to grasp and handle a production that taxes the average amateur's abilities".

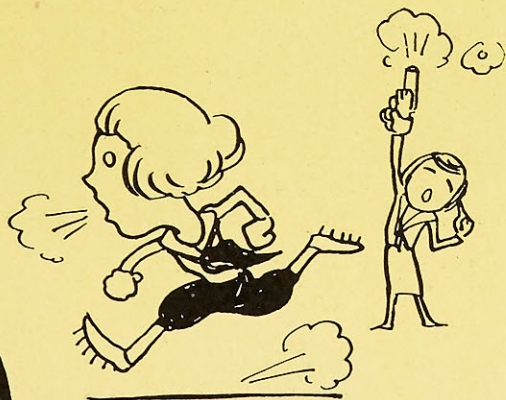
Because of the Little Theater movement quite an impetus has been given to community drama, so there is an urgent demand for teachers of expression and dramatic art who are capable of directing clubs and societies in the presenting of dramas. The course of dramatics at Webster College includes teacher training for those who are planning to obtain a teacher's diploma in expression. And the students who have completed the course have obtained positions and are most creditably carrying on the work taught them at their Alma Mater.



SCENE FROM "LIGHTS IN HAPPYLAND"

W.C.





# ATHLETICS



FIELD DAY

1925-26



1926-27

1927-28



1928-29

1929-30



1930-31

BASKETBALL TEAMS

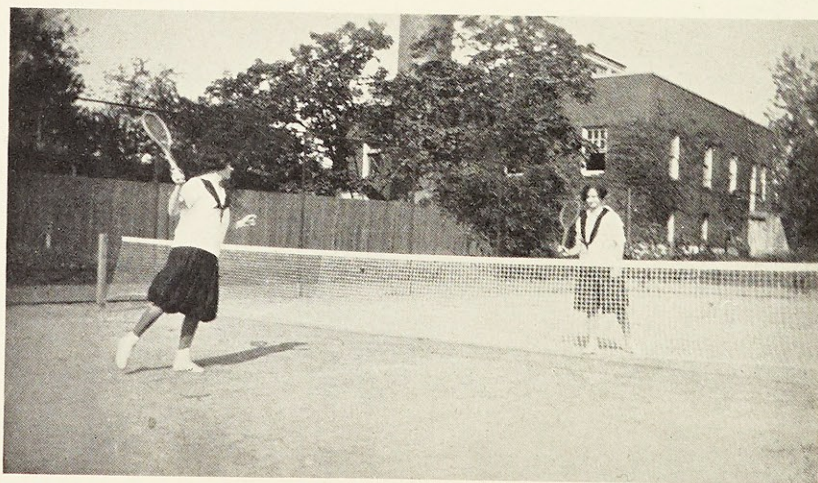
## Athletics

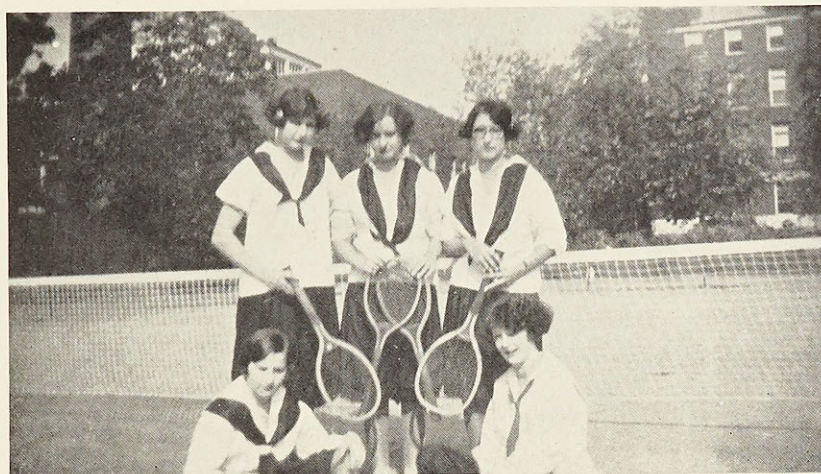
Basketball! The very sound of that word sends a thrill through the heart of every Webster girl. Where is the girl who can come to one of our basketball games and be bored or uninterested? Who can resist stamping her feet or yelling encouragement to the side on which she is betting? Even the most listless or indifferent will spring into action, waving her arms and shouting names at the players, to say nothing of pounding hats, heads and shoulders of those around her. From the sidelines she plays the game with each member of the team, poking her elbows into somebody's ribs or back when the forward gets the ball, and no one doubts but that she works just as hard to make the goal as the player. When the basket is made she is as thrilled as the forward herself.

This season's first basketball game was in December, 1924. The Freshmen had challenged the Sophomores "to come out and fight". And fight they did! The teams were as follows:

Mary Tancred	center	Harriet Averill
Helen Karcher	center	Margaret Leonard
Helen Fogg	guard	Regina Corcoran
Mildred Hennage	guard	Pauline Shocklee
Virginia Walsh	forward	Celeste Block
Margaret Reddin	forward	Virginia McClung

"Idle Hour" rang with yells and cheers. Everyone was breathless with suspense during the first half of the game. The score was 10 to 0 in favor of the Freshmen. Would they win or could the Sophomores make a strong come-back and be the victors? During the first quarter of the second half it did look as if the Sophs intended this very thing. But at the end of the game the score was 21 to 7, with the Freshmen as conquerors! The same team





### *Athletics—Continued*

was also victorious when it defeated Webster High School in a practice game with the score 15 to 9. The Webster High team has been champion of St. Louis County for four years.

This issue goes to the printer too early to report on the other games that are scheduled for the basketball season of 1924-1925, so we will have to leave to the sport editors of the next *Lauretanum* the pleasure of recording our successes.

Besides basketball, dancing, tennis, and horseback riding have their place in the life of a Webster girl. Once a week the dancing class meets in "Idle Hour." Here the modern ballroom steps are set aside and under the direction of Miss Reynolds the art of the folk-dance is studied.

Ping! Pang! The white tennis balls sail through the air and rackets swing here and there. "Love-thirty" calls someone. Two of the girls are playing it hard and fast. With lightning-like rapidity the balls cross and recross the nets. "Forty-thirty." Another serve—the ball skims close to the net, drops perfectly and shoots the length of the court without rising. "Deuce!" And the contest waxes hotter until one or the other pulls ahead and wins. This is a typical scene in the tennis tournament of the year.

The enthusiasm and zest of the devotees of horseback riding equals that of the tennis lover. On well-trained and high-spirited horses with Miss Reynolds leading, riding parties set off for a canter of several hours. Every half holiday, in fall and spring, a merry party can be seen cantering down the driveway.

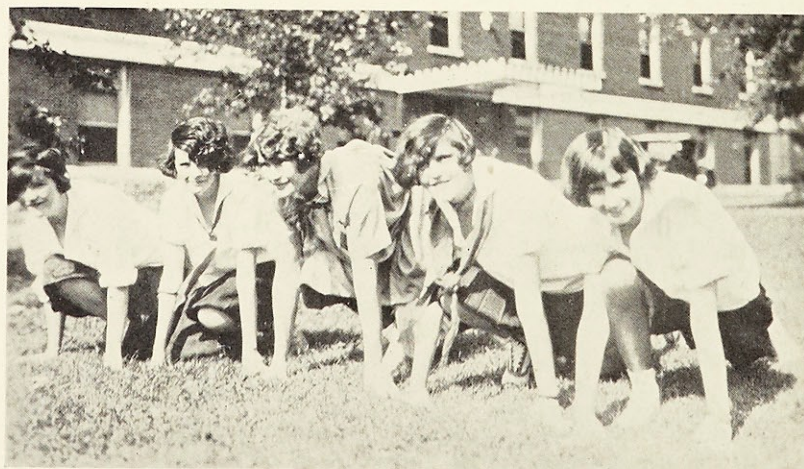
## Athletics—Continued

A Girl Scout course is to be given by Miss Becker in March. Miss Becker has given this course in many of the largest schools in the country. Forty students, comprising mostly Juniors and Seniors, shall attend the classes. The course which consists of eighteen lessons, emphasizes the methods of governing groups of younger girls, and the Girl Scout program as an example of typical Scout procedures and activities. No doubt the principles underlying a work of such practical bearing will give opportunity for animated discussion.

In June we hope to have several students qualified to teach Physical Education. For this purpose Miss Reynolds is giving a five-hour course of instruction. The full course consists of Playground Methods, Hygiene, Physiology, Kniesiology, and Folk-Dancing.

The climax of athletic activities of Webster College comes in May with Field Day. On the terraces spectators eagerly watch the games, drills, and other feats of skill occasioned by the track meet. For a month before the event the girls train strenuously, practicing high and broad jumping, hurdling, dashes, and obstacle races. At last Field Day is here! Gold and white pennants and skull caps flash in the sunlight. Excitement runs high and guesses are many as to who will win the cup. How proud one feels when a blue, red, or white ribbon is pinned to her middy. And should the collection of ribbons grow how one's chest does swell! When the ribbons and points are counted everyone with bated breath waits to hear who the heroine of the day may be.

Last year she was Miss Ella Hunter, a member of the Freshman class. It is not possible to predict who she will be this year, but we are eagerly looking forward to Field Day, the day of sports at Webster College.





# ORGANIZATIONS



### Sodality

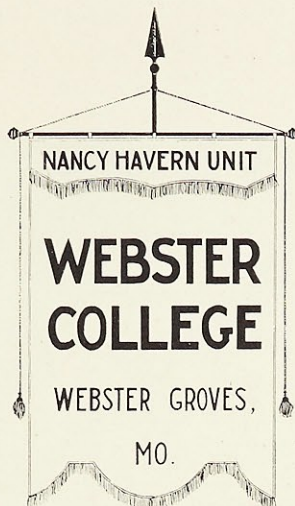
<i>Prefect</i>	GRACE CANTWELL
<i>Assistant Prefect</i>	LILLIAN O'CONNOR
<i>Secretary</i>	LUCINDA CLEMENTS
<i>Assistant Secretary</i>	MARGARET PETERS
<i>Treasurer</i>	VIOLET BARNICLE
<i>Sacristan</i>	DOROTHY MONARCH

JUANITA ABELL  
 LAURA ARCHER  
 HARRIET AVERILL  
 VIOLET BARNICLE  
 GENEVIEVE BARTHEL  
 MARGARET BARTHEL  
 ROSE BINDEWALD  
 CELESTE BLOCK  
 FLORENCE BOYER  
 MARTHA BRADFISH  
 HELEN BRINTON  
 PEARL BRODERICK  
 MARTA BROWN  
 MARIE LOUISE BULTE  
 MARY BURGET  
 ADELE BURKART  
 GRACE MARIE CANTWELL  
 ANN CARR  
 ELLEN CASEY  
 CATHERINE CLARK  
 LUCINDA CLEMENTS  
 SUE COPPINGER  
 MARY COOKE  
 REGINA CORCORAN  
 ELIZABETH CORRIGAN  
 THELMA COYNE  
 VIOLET DAMES  
 ELIZABETH DAUWALTER  
 ANNE DELAY  
 DOROTHY DONOGHUE  
 ANNE DONOVAN  
 LILLIAN DONOVAN  
 ELLEN DUGGAN  
 LOUISE ECK

PEARL FARRELL  
 GRETCHEN FEGERS  
 THEO FEHLIG  
 HELEN FOGG  
 THELMA GESELL  
 ANNETTE GLEESON  
 EDITH GLOSEMEYER  
 AGNES GRIFFIN  
 MARIE HANLON  
 MARIE HART  
 HELEN HEALY  
 HELEN HECKENKAMP  
 HELEN MAE HEISSERER  
 MILDRED HENNAGE  
 RUTH HUCKENBECK  
 KATHRYN HUMMERT  
 LUCIENNE IBERGER  
 ANNA MARIE JENNINGS  
 MAUD JOKERST  
 HELEN KARCHER  
 KATHRYN KAY  
 FRANCES KOHL  
 JAYNE LEDWIDGE  
 MARGARET LEONARD  
 MARY LYNN  
 HELEN MCANULTY  
 DOROTHY ANN MCBRIDE  
 VIRGINIA MCCLUNG  
 ANNA MARIE MCDERMOTT  
 HELEN MCGUIRE  
 MARY MCNAMARA  
 LORETTO MALONEY  
 ANNIE RUTH MILLIGAN  
 DOROTHY MONARCH

ESTHER MOORE  
 MARGARET MOWREY  
 JEANNE MURPHY  
 LOUISE MURPHY  
 MARY ELIZABETH NEWELL  
 GLADYS O'CONNOR  
 LILLIAN O'CONNOR  
 ROSEMARY O'CONNOR  
 MARGARET O'LEARY  
 MARGARET MARY PARKER  
 MARGARET PETERS  
 OLIVE PFEFFER  
 MARIE POWERS  
 GERTRUDE PRENDERGAST  
 MARGARET REDDIN  
 LUCILLE ROOF  
 NAN SHALLCROSS  
 THERESA SHEA  
 PAULINE SHOCKLEE  
 ROSALIE SIEFERT  
 HELEN SIMON  
 FLORENCE PITT SMITH  
 ROSAMOND SMITH  
 BEATRICE STACK  
 VIRGINIA STEPHENS  
 JEANETTE STIRITZ  
 HEDWIG STOCKER  
 HELEN STUCKSTEDE  
 MARY TANCRED  
 MARGARET TIERNON  
 AGNES TUCHSCHMIDT  
 DOROTHY VENNEWITZ  
 VIRGINIA WALSH  
 MARGARET WEGMANN

W.C.



## Catholic Students' Mission Crusade

### NANCY HAVERN UNIT

*President*

*Vice-President*

*Secretary*

*Treasurer*

LUCINDA CLEMENTS

MARTHA BRADFISH

AGNES TUCHSCHMIDT

LUCILLE ROOF

JUANITA ABELL  
LAURA ARCHER  
HARRIET AVERILL  
VIOLET BARNICLE  
GENEVIEVE BARTHEL  
MARGARET BARTHEL  
ROSE BINDEWALD  
CELESTE BLOCK  
MARTHA BRADFISH  
HELEN BRINTON  
PEARL BRODERICK  
MARTA BROWN  
MARIE LOUISE BULTE  
MARY BURGET  
ADELE BURKART  
GRACE MARIE CANTWELL  
ANN CARR  
ELLEN CASEY  
CATHERINE CLARK  
LUCINDA CLEMENTS  
SUE COPPINGER  
MARY COOKE  
REGINA CORCORAN  
ELIZABETH CORRIGAN  
THELMA COYNE  
VIOLET DAMES  
ELIZABETH DAUWALTER  
ANNE DELAY  
DOROTHY DONOGHUE  
ANNE DONOVAN  
LILLIAN DONOVAN  
ELLEN DUGGAN  
LOUISE ECK  
PEARL FARRELL

GRETCHEN FEGERS  
THEO FEHLIG  
HELEN FOGG  
THELMA GESELL  
ANNETTE GLEESON  
EDITH GLOSEMEYER  
AGNES GRIFFIN  
HELEN HADSELL  
MARIE HANLON  
MARIE HART  
HELEN HEALY  
HELEN HECKENKAMP  
HELEN MAE HEISSERER  
MILDRED HENNAGE  
RUTH HUCKENBECK  
KATHRYN HUMMERT  
LUCIENNE IBERGER  
ANNA MARIE JENNINGS  
MAUD JOKERST  
HELEN KARCHER  
KATHRYN KAY  
FRANCES KOHL  
JAYNE LEDWIDGE  
MARGARET LEONARD  
MARY LYNN  
HELEN MCANULTY  
DOROTHY ANN MCBRIDE  
VIRGINIA MCCLUNG  
ANNA MARIE MCDERMOTT  
HELEN MCGUIRE  
MARY EMILY MCNAMARA  
LORETTO MALONEY  
ANNIE RUTH MILLIGAN  
DOROTHY MONARCH

ESTHER MOORE  
MARGARET MOWRY  
JEANNE MURPHY  
LOUISE MURPHY  
MARY ELIZABETH NEWELL  
GLADYS O'CONNOR  
LILLIAN O'CONNOR  
ROSEMARY O'CONNOR  
MARGARET O'LEARY  
MARGARET MARY PARKER  
MARGARET PETERS  
OLIVE PFEFFER  
MARIE POWERS  
GERTRUDE PRENDERGAST  
MARGARET REDDIN  
LUCILLE ROOF  
NAN SHALLCROSS  
THERESA SHEA  
PAULINE SHOCKLEE  
ROSALIE SIEFERT  
HELEN SIMON  
FLORENCE PITT SMITH  
ROSAMOND SMITH  
BEATRICE STACK  
VIRGINIA STEPHENS  
JEANETTE STIRITZ  
HEDWIG STOCKER  
HELEN STUCKSTEDE  
MARY TANCRED  
MARGARET TIERNON  
AGNES TUCHSCHMIDT  
DOROTHY VENNEWITZ  
VIRGINIA WALSH  
MARGARET WEGMANN



ATHLETIC ASSOCIATION



## Athletic Association

President . . . . . LILLIAN O'CONNOR  
 Vice-President . . . . . HELEN FOGG  
 Secretary . . . . . GENEVIEVE BARTHEL  
 Treasurer . . . . . HARRIET AVERILL

JUANITA ABELL  
 LAURA ARCHER  
 HARRIET AVERILL  
 VIOLET BARNICLE  
 GENEVIEVE BARTHEL  
 MARGARET BARTHEL  
 ROSE BINDEWALD  
 CELESTE BLOCK  
 HELEN BRINTON  
 PEARL BRODERICK  
 MARTA BROWN  
 LAVERNE BOPP  
 GRACE CANTWELL  
 ELLEN CASEY  
 CATHERINE CLARK  
 MARY COOKE  
 REGINA CORCORAN  
 ELIZABETH CORRIGAN  
 THELMA COYNE  
 VIOLET DAMES  
 ELIZABETH DAUWALTER  
 ELLEN DUGGAN  
 DOROTHY DONOGHUE  
 LOUISE ECK  
 PEARL FARRELL  
 GRETCHEN FEGER  
 THEO. FEHLIG  
 HELEN FOGG  
 THELMA GESELL

EDITH GLOSEMEYER  
 AGNES GRIFFIN  
 ADELAIDE GROSS  
 MARIE HART  
 HELEN HECKENKAMP  
 HELEN HEALY  
 HELEN MAE HEISSERER  
 MILDRED HENNAGE  
 ERVILLA HIX  
 RUTH HUCKENBECK  
 LUCIENNE IBERGER  
 ANNA MARIE JENNINGS  
 MAUD JOKERST  
 HELEN KARCHER  
 KATHRYN KAY  
 FRANCES KOHL  
 JAYNE LEDWIDGE  
 MARGARET LEONARD  
 MARY LYNN  
 HELEN MCANULTY  
 DOROTHY ANN MCBRIDE  
 VIRGINIA MCCLUNG  
 ANNA MARIE MCDERMOTT  
 LUCILLE MCGRATH  
 HELEN MCGUIRE  
 MARY MCNAMARA  
 ANNIE RUTH MILLIGAN  
 DOROTHY MONARCH  
 MARGARET MOWREY

LOUISE MURPHY  
 MARY ELIZABETH NEWELL  
 GLADYS O'CONNOR  
 LILLIAN O'CONNOR  
 ROSEMARY O'CONNOR  
 MARGARET PETERS  
 MARIAN FLAIZ PETERSEN  
 OLIVE PFEFFER  
 MARIE POWERS  
 GERTRUDE PRENDERGAST  
 MARGARET REDDIN  
 LUCILLE ROOF  
 NAN SHALLCROSS  
 THERESA SHEA  
 PAULINE SHOCKLEE  
 ROSALIE SIEFERT  
 HELEN SIMON  
 FLORENCE PITT SMITH  
 ROSAMOND SMITH  
 BEATRICE STACK  
 VIRGINIA STEPHENS  
 JEANETTE STIRITZ  
 HELEN STUCKSTEDE  
 MARY TANCRED  
 MARGARET TIERNON  
 AGNES TUCHSCHMIDT  
 DOROTHY VENNEWITZ  
 VIRGINIA WALSH  
 MARGARET WEGMANN



### Loretto Choral Club

<i>President</i>	LILLIAN O'CONNOR
<i>Vice-President</i>	MARGARET TIERNON
<i>Treasurer</i>	GLADYS O'CONNOR
<i>Secretary</i>	ESTHER MOORE

JUANITA ABELL  
 LAURA ARCHER  
 HARRIET AVERILL  
 VIOLET BARNICLE  
 MARGARET BARTHEL  
 CELESTE BLOCK  
 MARTHA BRADFISH  
 HELEN BRINTON  
 PEARL BRODERICK  
 MARTA BROWN  
 MARIE LOUISE BULTE  
 ADELE BURKART  
 GRACE CANTWELL  
 ANN CARR  
 ELLEN CASEY  
 CATHERINE CLARK  
 LUCINDA CLEMENTS  
 REGINA CORCORAN  
 ELIZABETH CORRIGAN  
 THELMA COYNE  
 VIOLET DAMES  
 ANNE DELAY  
 DOROTHY DONOGHUE  
 ELLEN DUGGAN  
 LOUISE ECK  
 PEARL FARRELL  
 GRETCHEN FEGER  
 THEO FEHLIG

HELEN FOGG  
 ANNETTE GLEESON  
 EDITH GLOSEMEYER  
 AGNES GRIFFIN  
 HELEN HEALY  
 HELEN HECKENKAMP  
 MILDRED HENNAGE  
 RUTH HUCKENBECK  
 KATHRYN HUMMERT  
 LUCIENNE IBERGER  
 ANNA MARIE JENNINGS  
 MAUD JOKERST  
 HELEN KARCHER  
 KATHRYN KAY  
 FRANCES KOHL  
 JAYNE LEDWIDGE  
 MARGARET LEONARD  
 MARY LYNN  
 HELEN MCANULTY  
 DOROTHY ANN MCBRIDE  
 VIRGINIA MCCLUNG  
 ANNA MARIE MCDERMOTT  
 HELEN MCGUIRE  
 MARY EMILY MCNAMARA  
 LORETTO MALONEY  
 ANNIE RUTH MILLIGAN  
 DOROTHY MONARCH  
 ESTHER MOORE

MARGARET MOWREY  
 JEANNE MURPHY  
 LOUISE MURPHY  
 MARY ELIZABETH NEWELL  
 GLADYS O'CONNOR  
 LILLIAN O'CONNOR  
 MARGARET O'LEARY  
 MARGARET MARY PARKER  
 MARGARET PETERS  
 OLIVE PFEFFER  
 MARIE POWERS  
 GERTRUDE PRENDERGAST  
 MARGARET REDDIN  
 LUCILLE ROOF  
 THERESA SHEA  
 ROSALIE SIEFERT  
 HELEN SIMON  
 ROSAMOND SMITH  
 BEATRICE STACK  
 VIRGINIA STEPHENS  
 JEANETTE STIRITZ  
 HELEN STUCKSTEDE  
 MARY TANCRED  
 MARGARET TIERNON  
 AGNES TUCHSCHMIDT  
 DOROTHY VENNEWITZ  
 VIRGINIA WALSH  
 MARGARET WEGMANN

### Loretto Orchestra

LAURA ARCHER  
 ROSE BINDEWALD  
 ADELE BURKART

ANNE DELAY  
 ANNIE RUTH MILLIGAN  
 DOROTHY MONARCH

LUCILLE ROOF  
 MARGARET TIERNON



ERNESTINE ZAVISCH



RUTH LOFTUS WEILER



LEONE GARVEY

### Alumnae Association

ORGANIZED IN 1923

#### OFFICERS

- |                       |                                     |
|-----------------------|-------------------------------------|
| <i>President</i>      | MRS. RUTH LOFTUS WEILER, A. M.      |
| <i>Vice-President</i> | MISS ERNESTINE ZAVISCH, A. B.       |
| <i>Secretary</i>      | MRS. FRANCES PROBST HALLORAN, A. B. |
| <i>Treasurer</i>      | MISS LEONE GARVEY, A. M.            |

#### EXECUTIVE COMMITTEE

- |   |                               |
|---|-------------------------------|
| MISS FLORENCE WADDOCK, A. B., CHAIRMAN  |                               |
| MRS. ELIZABETH HENNESSY JONES, LITT. B. | MISS MARY BURKS, A. B.        |
| MISS CATHERINE O'REILLEY, A. B.         | MISS EMILY BARNICLE, LITT. B. |



ALUMNAE DAY



## Alumnae

WHO	WHERE	WHAT
	1919	
FLORENCE WADDOCK, A. B.	St. Louis	Teaching.
	1921	
ERNESTINE ZAVISCH, A. B.	El Paso, Texas	Teaching.
CATHERINE O'REILLY, A. B.	St. Louis	Teaching.
JESSIE HURLEY, B. S.	St. Charles, Mo.	Mrs. Milton Meyer
LEONE GARVEY, A. B.	St. Louis	Public Library Work.
RUTH MARY LOFTUS, A. B.	St. Louis	Mrs. J. C. Weiler
	1922	
WINNIE HURLEY, LITT. B.	Kansas City, Mo.	Office Work.
FRANCES PROBST, A. B.	St. Louis	Mrs. John Halloran
ELIZABETH HENNESSY, LITT. B.	St. Louis	Mrs. V. L. Jones
MADELEINE MCSHANE, A. B.	Fort Smith, Ark.	Mrs. Max Lukinbill
	1923	
MARCELLE PREVOST, A. B., Diplome de Professeur de Francais a l'Etranger, U. of Paris	Webster Groves, Mo.	Teaching.
EMILY BARNICLE, LITT. B.	St. Louis	Business.
THELMA BARNICLE, A. B.	St. Louis	Business.
MARIE HAENNI, A. B.	Dallas, Tex.	Home.
CATHERINE HAENNI, A. B.	Dallas, Tex.	Home.
NORINE BUCKLEY, A. B.	Vicksburg, Miss.	Teaching.
HORTENSE MOORE, A. B.	Chicago	Mrs. John McManus
MARY BURKS, A. B.	Farmington, Mo.	Home.
ANNA MAE BARRY, A. B.	St. Louis	Mrs. Norman George
MARGARET O'MARA, A. B.	St. Charles, Mo.	Mrs. Mark Anderson.
ROSALIA FEHLIG, A. B.	St. Louis	Teaching.
	1924	
CATHERINE BARTHEL, A. B.	St. Louis	Teaching.
EVARISTA COTTER, LITT. B.	St. Louis	Teaching.
ALVERA FEHLIG, A. B.	St. Louis	Home.
MARY REDDIN, A. B.	Loretto, Ky.	Novitiate.
KATHRYNE SKARRY, A. B.	St. Louis	Teaching.
GERTRUDE WAHRER, B. S.	Webster Groves, Mo.	Teaching.
MARGARET WALSH, MUS. B.	Needles, Calif.	Teaching.

### DEPARTMENT OF EXPRESSION

	1922	
JEANETTE HENSGEN	Normandy, Mo.	Mrs. Harry Surkamp
MARIE LOUISE BULTE	St. Louis	Senior at Webster College
ROSALIA FEHLIG	St. Louis	Teaching.

	1923	
ANNA MAE BARRY	St. Louis	Mrs. Norman George

### DEPARTMENT OF MUSIC

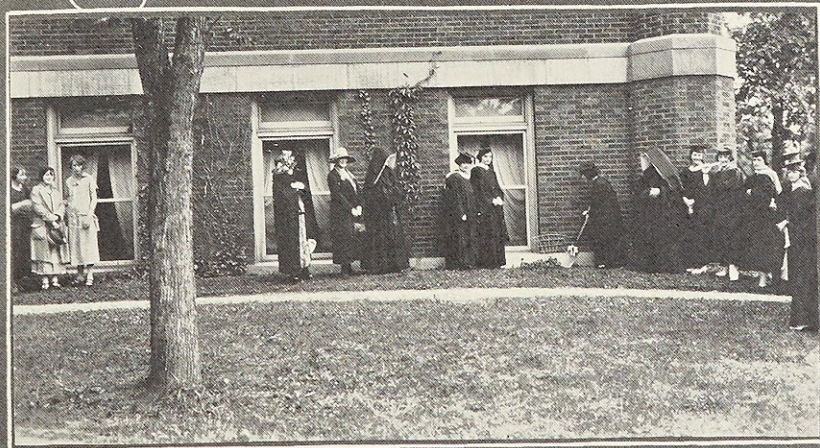
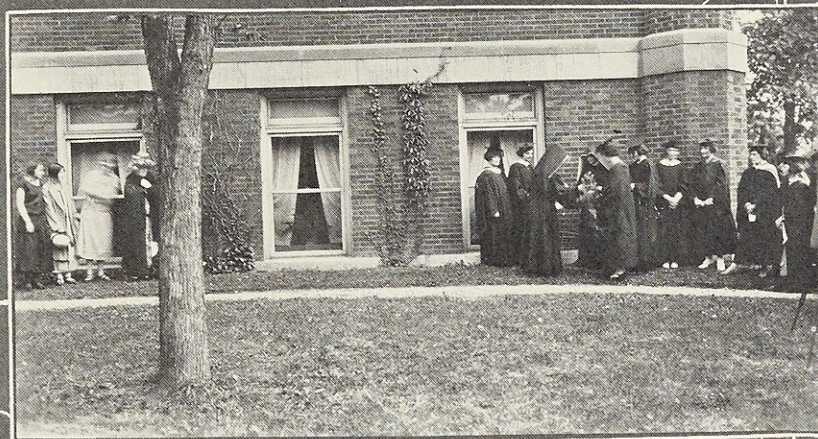
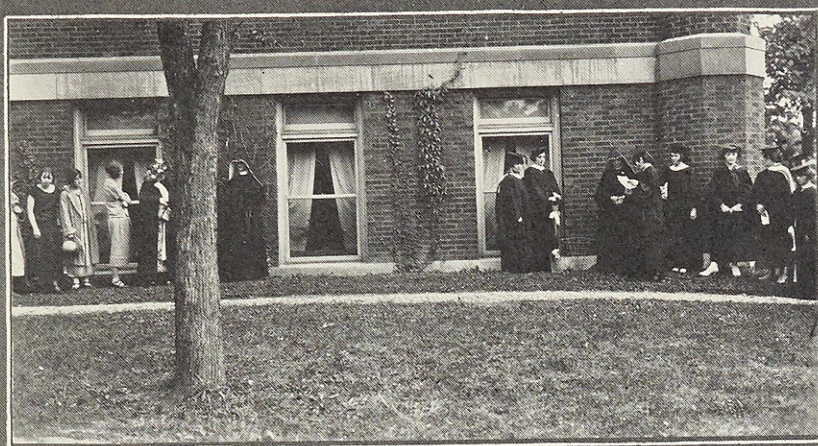
	1923	
MARY C. BURKS, MUS. B.	Farmington, Mo.	Home.
MARY ISABEL REDDIN, MUS. B.	Loretto, Ky.	Novitiate

### ASSOCIATE MEMBERS

JANET OWINGS (EX.—'21)	St. Louis	Mrs. E. Britton
JOSEPHINE BEUTNER (EX.—'22)	Buffalo, N. Y.	Business.
MARY ANN ANDERSON (EX.—'23)	St. Charles, Mo.	Home.
RUTH WEILER (EX.—'24)	St. Louis	Teaching.

### HONORARY MEMBERS

MRS. DANIEL DILLON	Washington, D. C.
MRS. IGNATIUS MCMENAMY	St. Louis
MRS. GEORGE MCNULTY	St. Louis



PLANTING OF THE IVY





# PUBLICATIONS



VIOLET BARNICLE  
Advertising Mgr.



GLADYS O'CONNOR  
Business Mgr.



GRACE M. CANTWELL  
Editor in  
Chief



HELEN M. HEALY  
Associate Editor



ROSEMARY O'CONNOR  
Treasurer

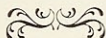


## Lauretanum Staff

<i>Editor-in-Chief</i>	GRACE MARIE CANTWELL
<i>Advertising Manager</i>	VIOLET BARNICLE
<i>Business Manager</i>	GLADYS O'CONNOR
<i>Treasurer</i>	ROSEMARY O'CONNOR

### ASSOCIATE EDITORS

HELEN MARIE HEALY	MARY ELIZABETH NEWELL
ESTHER MOORE	DOROTHY MONARCH
LILLIAN O'CONNOR	MARGARET PETERS
GENEVIEVE BARTHEL	JUANITA ABELL
ADELE BURKART	



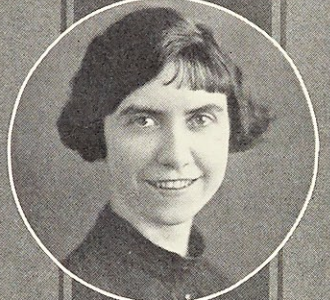
## What Is a Year Book?

The publications one finds at universities and colleges are, usually, the newspaper, the literary magazine, and the year book or annual. The newspaper, because it carries the current campus news, is always interesting; the magazine, often a quarterly, the literary exponent of student work, is indispensable; but the year book, which makes its appearance but once during the scholastic year and that immediately before Commencement, is the record of the entire student activities from October to June. Now year books, judging from those we have seen, and they are not few, do not always surpass the newspaper and magazine in originality, cleverness, and technique. It sometimes happens that the annual, judged from these three points, would be placed last in a descending climax. Nevertheless, the student body is always interested, and though ready to criticize, equally ready to try again.

Our work as editors of a year book has been the analysis of this situation, and the result of the analysis is the answer to the question with which we headed our editorial. Just as the newspaper carries the campus news and the magazine presents the best literary work of the institution, so the year book records pictorially, for all time, the student activities. It is not a news-carrier, nor a literary work, but it is a storehouse of the brightest, choicest moments of the students' year. Here in the years to come, the student will see unfaded the minutest details of the red-letter days of her college life. This is the essential purpose of a year book; this is the purpose of the Lauretanum; this the "why" of its existence.



LILLIAN M. O'CONNOR  
*Editor-in-Chief, The Loretine*



### THE STAFF

MARIE HANLON  
*Exchange Editor*

ANNA MARIE JENNINGS  
*Alumnae Editor*

ROSEMARY O'CONNOR  
*"Just Among Ourselves" Editor*

ESTHER MOORE  
*Circulation Manager*

MARGARET TIERNON  
*Advertising Manager*

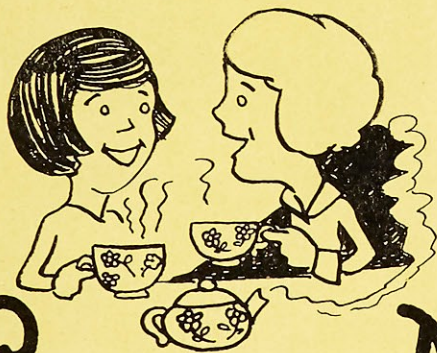
ANNE DELAY  
*Artist*

*Associate Editors*

LUCIENNE IBERGER  
HELEN HEALY  
GLADYS O'CONNOR  
ADELE BURKART

MARIAN PETERSEN  
MARGARET PETERS  
DOROTHY MONARCH  
MARGARET MOWREY





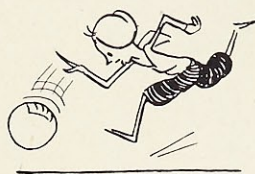
# SOCIAL ACTIVITIES



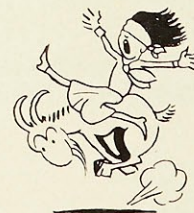
FALL DAY

## Calendar 1924-25

- MARCH 17 . . . . . St. Louis University Oratorical Contest.
- MARCH 18 . . . . . Concert at Odeon (Jeritza).
- MARCH 19 . . . . . Recital by students of Conservatory.
- MARCH 20 . . . . . Lecture by Reverend D. A. Lord, S. J., on his pageant, "Ashes and Glory."
- MARCH 21 . . . . . Reading by Miss Hennessy.
- MARCH 22 . . . . . Freshman and Sophomore basketball game.
- MARCH 26 . . . . . Lecture by Reverend D. A. Lord, S. J., on "College Girls and Culture."
- MARCH 27 . . . . . Opera "Martha" at Odeon.
- MARCH 28 . . . . . Reading of "Bambi" by Mr. Watkins.
- MARCH 31 . . . . . Freshman basketball game.
- APRIL 1 . . . . . Concert by John McCormack at Coliseum.
- APRIL 2 . . . . . Trip to Art Museum with Father Lord, S. J.
- APRIL 9 . . . . . Lecture by Reverend D. A. Lord, S. J., on "The New Poetry."
- APRIL 11 . . . . . Feast of Seven Sorrows. His Grace of St. Louis, Archbishop J. J. Glennon, D. D., meets student body.
- APRIL 12 . . . . . Dramatic recital by Evarista Cotter.
- APRIL 13 . . . . . Freshman entertainment.
- APRIL 14 . . . . . Dramatic recital by Lucinda Clements.
- APRIL 16 . . . . . Easter holidays.
- APRIL 21 . . . . . Senior dinner-dance at Statler.
- APRIL 23 . . . . . Classes resumed.
- APRIL 24 . . . . . Juniors entertain Seniors.
- APRIL 26 . . . . . Senior party at Sunset Country Club.
- APRIL 27 . . . . . Freshman Dramatic Art entertainment.
- APRIL 28 . . . . . Senior party at Shubert-Jefferson.
- APRIL 29 . . . . . Election of Lauretanum staff.
- MAY 1 . . . . . Senior dance at Boehmer's.
- MAY 3 . . . . . Sophomores entertain Seniors.



- MAY 7 . . . . . Reception of Seniors of Catholic High Schools.
- MAY 8 . . . . . Recital of Loretto Conservatory at Vandervoort's.
- MAY 9 . . . . . Freshmen entertain Seniors.
- MAY 10 . . . . . Mrs. Frances P. Halloran entertains Seniors.
- MAY 11 . . . . . Closing Exercises of Conservatory of Music.
- MAY 12 . . . . . Hay-ride of the Sophomores.
- MAY 17 . . . . . Senior dinner-dance.
- MAY 18 . . . . . Presentation of plays at St. Louis University.
- MAY 19 . . . . . Mrs. Ruth L. Weiler entertains Seniors.
- MAY 20 . . . . . Plays. Dramatic Art Class.
- MAY 21 . . . . . Field Day.
- MAY 24 . . . . . Dancing Pageant.
- MAY 25-30 . . . . . EXAMS.
- MAY 30 . . . . . Webster Groves Memorial Services.
- JUNE 1 . . . . . Senior Play.
- JUNE 2 . . . . . Solemn Mass and Baccalaureate Sermon.
- JUNE 3 . . . . . Alumnae Banquet. Planting of the Ivy.
- JUNE 4 . . . . . Graduation. Reception to Seniors.
- SEPTEMBER 5-6 . . . . . Registration.
- SEPTEMBER 8 . . . . . Organization of classes.
- SEPTEMBER 9 . . . . . Classes begin.
- SEPTEMBER 16 . . . . . Mass of the Holy Ghost.
- SEPTEMBER 17 . . . . . Initiation of Freshmen.
- SEPTEMBER 18 . . . . . Constitutional Day.
- SEPTEMBER 22 . . . . . Social dinner. Seniors entertain.
- SEPTEMBER 25 . . . . . Fall Day, outing at the quarry.
- SEPTEMBER 27 . . . . . Freshman hike to the quarry.
- SEPTEMBER 30 . . . . . Class elections.
- OCTOBER 3 . . . . . First issue of Web.
- OCTOBER 6 . . . . . Veiled Prophet Parade.
- OCTOBER 7 . . . . . Some of the girls attend Veiled Prophet Ball.
- OCTOBER 8 . . . . . Cap and Gown Day.
- OCTOBER 10 . . . . . Senator LaFollette at Coliseum.
- OCTOBER 12 . . . . . Election of Loretine staff.
- OCTOBER 13 . . . . . Vivian Watkins, reader.
- OCTOBER 18 . . . . . Address of J. W. Davis at Coliseum.



- OCTOBER 22 . . St. Louis University Conclave Dance.
- OCTOBER 23 . . Junior Class entertains at social dinner.
- OCTOBER 24 . . Fritz Lieber in "Macbeth" at American.
- OCTOBER 30 . . Sophomores entertain with a Hallowe'en Party.
- OCTOBER 31 . . Concert at Odeon (Schumann-Heink).
- NOVEMBER 1 . . Feast of All Saints.
- NOVEMBER 2 . . Senator Reed at Coliseum.
- NOVEMBER 4 . . Election Day.
- NOVEMBER 7 . . First Symphony Concert of the season.
- NOVEMBER 10 . . First day of the N. C. C. W. Convention at Odeon.
- NOVEMBER 11 . . Business meeting of the N. C. C. W. Convention at Statler.
- NOVEMBER 12 . . Sophomores entertain at Social Dinner.
- NOVEMBER 13 . . Miss Gannon calls Parliamentary Law Class to order.
- NOVEMBER 14 . . Missouri Federation of Catholic Alumnae Convention.
- NOVEMBER 15 . . Mission Card Party.
- NOVEMBER 21 . . Piano Recital by Maria Carreras at Sheldon Auditorium.
- NOVEMBER 22 . . Symphony Concert, Elena Gerhardt, Soloist.
- NOVEMBER 24 . . Dramatic Art Class Plays.
- NOVEMBER 25 . . Fall Dance at Forest Park Hotel.
- NOVEMBER 27 . . Thanksgiving holidays begin.
- DECEMBER 1 . . Classes resumed.
- DECEMBER 8 . . Reception into the Sodality.
- DECEMBER 10 . . Mr. C. E. W. Griffith, "Romeo and Juliet."
- DECEMBER 12 . . Symphony Concert, Michel Guskoff and Max Steindel.
- DECEMBER 15 . . Recital by students of Conservatory.
- DECEMBER 17 . . Sophomore - Freshman basketball game.
- DECEMBER 18 . . Christmas banquet and party.
- DECEMBER 19 . . Christmas vacation begins.
- JANUARY 6 . . Classes resumed.
- JANUARY 9 . . Symphony Concert, Efram Zimbalist, Soloist.



- JANUARY 13 . . . St. Louis University Conclave Dance.
- JANUARY 16 . . . Symphony Concert, Marguerite Matzenauer, Soloist.
- JANUARY 19-23 . . . EXAMS.
- JANUARY 22 . . . Social Dinner.
- JANUARY 26 . . . Recital by Miss Streit in Auditorium.
- JANUARY 28 . . . Mr. Charles Hayden, S. J., "Negro Missions."
- JANUARY 29 . . . Senior Prom at Women's Club.
- FEBRUARY 2 . . . Mission Show at St. Louis University Auditorium.
- FEBRUARY 6 . . . Symphony Concert, Carl Flesch, Soloist.
- FEBRUARY 7 . . . Senior "Tramp" Party.
- FEBRUARY 9 . . . Mr. Louis Wetmore, "Heretics and Orthodox."
- FEBRUARY 10 . . . Juniors and Seniors practice the virtue of feasting.
- FEBRUARY 12 . . . Presentation of plays by Dramatic Art Class.
- FEBRUARY 20 . . . Symphony Concert, Percy Grainger, Soloist.
- FEBRUARY 22 . . . George Washington's birthday.
- FEBRUARY 23 . . . Celebration in honor of Washington.
- FEBRUARY 24 . . . Lecture, Miss Elizabeth Hennessey. Social dinner.
- FEBRUARY 26 . . . Visit of Dr. W. J. Boyd, President of Western Women's College.
- MARCH 2-21 . . . Girl Scout's course (Miss Becker).
- MARCH 3 . . . Freshman-Upper Classmen basketball game.
- MARCH 4-7 . . . Retreat. Exercises conducted by Reverend Martin O'Malley, C. M.
- MARCH 7 . . . Mefistofele, with Chaliapine, at the Shubert-Jefferson.
- MARCH 7 . . . Symphony Concert, Mario Chamlee, Soloist.
- MARCH 12 . . . Lecture, Mr. Frederick Paulding.
- MARCH 14 . . . Symphony Concert, Julia Clausen, Arthur Middleton.
- MARCH 15 . . . Senior Music Recital by Grace Cantwell and Lillian O'Connor.



W.C.

WEBSTER GIRLS

LOVE

Switzer's Chocolate Soldiers

---

THE  
MURILLO STUDIOS

Wish to acknowledge the courtesy  
of the Lauretanium Staff in select-  
ing them as Official Photographer



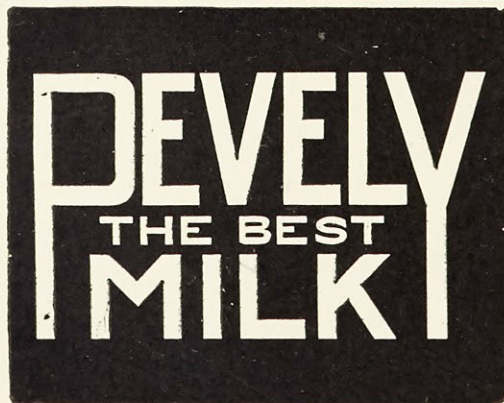
W.C.

F. BURKART  
MANUFACTURING CO.

---

From a Friend

---





The  
Hensgen-Peters-Smith  
Company

ST. LOUIS

*Recognized as Headquarters for and Connoisseurs*

*of*

Quality Table Products

*for*

CLUBS, HOTELS AND INSTITUTIONS

*Distributors of the*

“AT-LAST-A”—Extra Fancy

“CHIC”—Fancy

“TRABON”—Choice

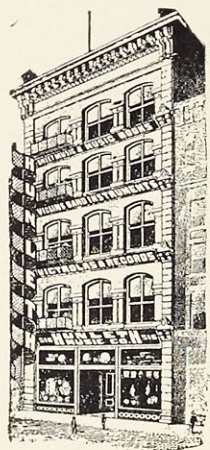
and

“H. P. S.” Brands

---

AT-LAST-A and CHIC Brands Recommended  
by and Used Exclusively at Webster College

W.C.



# HUNLETH MUSIC CO. 516 LOCUST ST.

MOST COMPLETE MUSIC HOUSE IN ST. LOUIS

IMPORTERS & JOBBERS OF

**MUSICAL INSTRUMENTS.**

**BAND INSTRUMENTS**

**ORCHESTRA AND BAND  
SUPPLIES**

**VICTROLAS  
RECORDS**



**SHEET MUSIC**

FOREIGN & DOMESTIC  
SHIRMER, WOOD, LITOLF ED ETC.

Geo. H. Zollmann  
Fruit and Produce Co.  
*General Commission Merchants*  
Receivers and Distributors of  
FRUITS, VEGETABLES,  
PRODUCE  
833 N. Third Street    828 N. Fourth Street  
ST. LOUIS, MO.

Geo. D. Fisher & Co.  
*Opticians*  
KODAKS AND PHOTOGRAPHERS'  
SUPPLIES  
MAIN STORE  
915 LOCUST STREET  
Olive 1307  
BRANCH STORE  
510 NORTH GRAND BLVD.  
METROPOLITAN BUILDING  
GRAND BLVD. AND OLIVE STREET  
Lindell 423

Demand U. S. Government Inspected  
Meat Products—*They Cost No More*

## KREY PACKING COMPANY

Is a U. S. Government inspected packing house and therefore offers you the assurance of purchasing PURE meat products.

**WHY NOT AVAIL YOURSELF OF THIS OPPORTUNITY?**

The U. S. Government expends many millions of dollars annually to give you this protection with no additional cost to you.

**CONSIDER WHAT THIS MEANS**

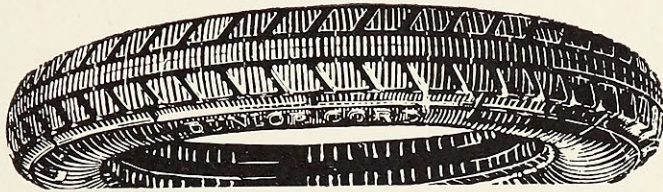
All other assurances of inspection are inadequate. Why purchase any meat products of your dealer other than that which has been U. S. Government inspected?

*Krey's X-Ray Brand U. S. Inspected Pork, Beef and Sausage  
Products Can Be Obtained at All First-Class Dealers*

**DEMAND THEM AND REST EASY**



Hot days coming-  
 watchout for blowouts — Better equip with



**DUNLOP**  
 Building on honor to honor its Builders

the cool tire  
 ROBERT BARNICLE  
 AUTO SUPPLIES  
 Boyle and Olive

We Want  
 YOUR TRADE

If Good, Reliable Goods,  
 Lowest Possible Prices,  
 Fair and Square Dealing,  
 Polite Attention will get  
 it, we can count on you  
 for a Customer.

**A. Brandenburg**

638 Big Bend Road

WEBSTER GROVES, MISSOURI

**St. Louis Glass and  
 Queensware Co.**

1121-1125 Olive Street

*China and Glassware*

WEBSTER 99

**Old Orchard Dry  
 Goods Co.**

Al Levy, Proprietor

658 Big Bend Road

WEBSTER GROVES, MO.

CENTRAL 1370  
 CENTRAL 1371

J. D. HEALY, President  
 Residence, 3118 Allen Avenue

**Henry Hiemenz Realty Company**

*Realtors*

ESTABLISHED 1873

SALES—LOANS—RENTALS—INSURANCE  
 AND RENT COLLECTIONS

614 Chestnut Street

St. Louis, Mo.



THE DRUG SHOP  
*Prescription Specialists*

683 EAST BIG BEND ROAD  
DE LUXE ICE CREAM

Webster 2733 and 2734

WE ARE AS "CLOSE AS YOUR PHONE"

*THE* dust, dirt and germs of the Street-blown winds, the freezing cold, impair foods left in the open and endanger health.

Comfort and safety for food and health in the ice-filled indoor refrigerator.

JAS. J. O'CONNOR  
COFFEE COMPANY

J. J. O'CONNOR, Proprietor

*Importers, Jobbers, Roasters*

COFFEES : TEAS : SPICES

5608 Delmar Blvd. St. Louis, Mo.

Olive 242

ELLIOTT & BARRY  
ENGINEERING CO.

Heating Engineers and  
Contractors

1426 Olive Street

ST. LOUIS



CABANY 298

FOREST 3727

# Ladies' Home Baking Company

Established 1890

CARL A. WESSEL

5509 PERSHING AVE.

5860 DELMAR BLVD.

BOMONT 1864

CENTRAL 5450

## CASPER STEHLE BEDDING CO.

MANUFACTURERS OF

MATTRESSES, PILLOWS and BEDDING

NINETEENTH AND MORGAN STREETS

H. C. SMITH, President and Treasurer

ST. LOUIS, MO.

Phone, Webster 2558-W

LINDELL 178-198

### Webster Beauty & Gift Shoppe

*Beauty Specialists*

Hours: 9 a. m. to 6 p. m.  
Open Evenings by Appointment

48 W. Lockwood Ave., Webster Groves, Mo.

### A. E. STEIDLE

*Florist*

Grand and Lindell Blvds.

*"Say It With Flowers"*

The Sign of Quality—"DIT DID IT"

### DITENHAFFER PRINTING COMPANY

Engraving, Lithographing, Stationery, School Supplies, Etc.

OLIVE 8449

1407 PINE STREET

Tyler 316 and 306

Residence, Cabany 1347

### JOHN A. ROHAN BOILER WORKS

*Manufacturers of All Kinds of*

Boilers, Sheet Iron, Tank and Stack Work

Repair Work Executed on Short Notice at Reasonable Prices

MARINE WORK A SPECIALTY

913-915-917 LA BEAUME STREET



*Safety First*

# Webster Groves Trust Company

Capital . . . . .	\$100,000.00
Surplus . . . . .	50,000.00
Undivided Profits . . . . .	26,000.00
	<hr/>
	\$176,000.00

### Select Your Optician as You Do Your Surgeon, Banker or Lawyer

YOUR eyesight is too precious to permit anyone to experiment with it. Intrust the care of your eyes only to those who have acquired expertness by long years of experience.  
Be satisfied with nothing less than Aloe Glasses.



513 Olive Street Grand and Washington

*For Health's Sake*

Ask Your Grocer for



DeCoursey Creamery Co.  
Manufacturers of  
**WHITE ROSE BUTTER**

*Compliments*

*of the*

# FRESHMAN CLASS



Try Our

## INSTITUTION BLEND

It will give satisfaction

### NASH-SMITH TEA & COFFEE COMPANY

Phone, Central 657

Mary Lane Shop

PARTY DECORATIONS  
GIFT NOVELTIES, GREETING CARDS  
FAVORS

711 Locust Street      Saint Louis

Compliments

of

Joe Garavelli

DeBaliviere and DeGiverville

SCHOOLS in and around St. Louis know the Wiese Printing Company as Annual Printers: know that this organization is reliable, capable and prompt.

## WIESE PRINTING CO.

PINE STREET AT TWENTY-SECOND  
ST. LOUIS, MISSOURI

*The Largest Printers of School Annuals in St. Louis*



5 to 48 Point

Day and Night Service

*Composition in This Issue of Lauretanum*

*Furnished by*

ST. LOUIS TYPESETTING COMPANY

922 PINE STREET

Olive 4191

Estimates on All Classes of  
Typesetting Cheerfully Given

No Job Too Small

No Job Too Large

---

From a Friend

---

*The Cover for This Annual Was Created  
and the Binding Done by*

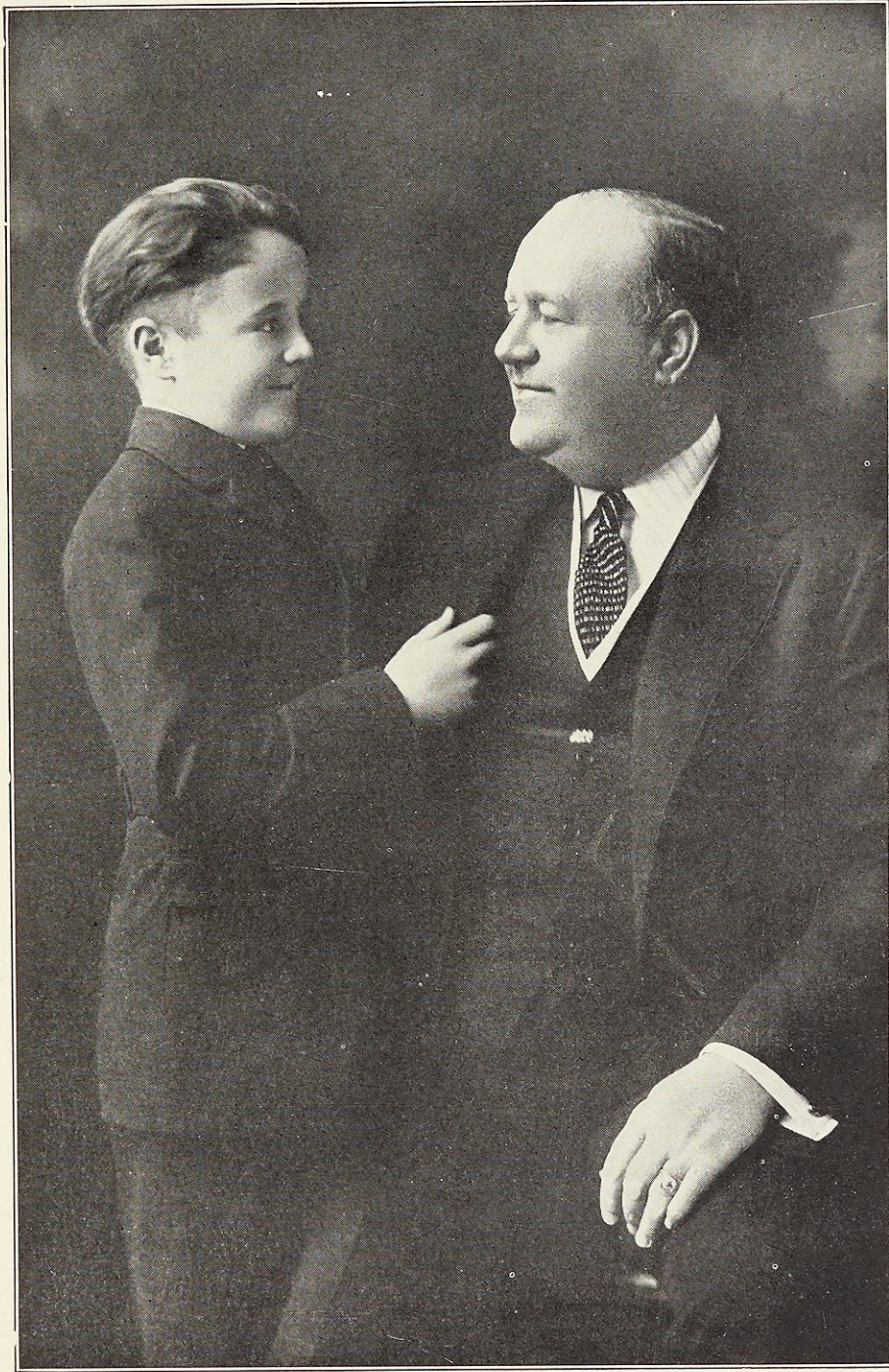
BECKTOLD PRINTING & BOOK MFG.  
COMPANY

200-212 PINE ST.

ST. LOUIS, MO.

SEND FOR SAMPLES

W.C.



W.C.



*finis*

